



WILSONVILLE
OREGON

2019 ANNUAL REPORT & RESOURCE GUIDE

2019 ANNUAL COMMUNITY REPORT & RESOURCE GUIDE

Editor: Bill Evans • Designer: Jennie Hill

Wilsonville City Hall • 29799 SW Town Center Loop E. • Wilsonville, OR 97070 • 503-570-1502

Copies of this report are available at City Hall or at ci.wilsonville.or.us/annualreport 



All are welcome here.

In May 2017, Wilsonville's City Council unanimously approved Resolution 2626 declaring Wilsonville as a welcoming and inclusive city.

"The City of Wilsonville is an inclusive city that has and will continue to welcome the collective contributions of all persons, honoring and respecting people of every race, color, national origin, immigration or refugee status, heritage, culture, religion, sex, gender, gender identity, sexual orientation, marital status, mental and/or physical ability, age or economic status.

"The Wilsonville City Council encourages all Wilsonville residents to unite and work together to promote kindness and understanding in our shared community, rejecting hatred, bigotry, and divisiveness, as this community strives to protect the freedoms held dear and granted to all by the United States Constitution."



Bryan Cosgrove, City Manager

FROM THE CITY MANAGER

The City of Wilsonville provides an Annual Report to share a few recent achievements and define a few primary objectives for the upcoming year.

This year, we have expanded the publication to provide a community resource guide that highlights many of the core services provided by the City and our valued partners in local governance, including the West Linn-Wilsonville School District, Clackamas County Sheriff's Office and Tualatin Valley Fire & Rescue.

City employees take great pride in providing high-quality services to support the Wilsonville community. When you're happy, we're happy, so it is incredibly satisfying to read that 95 percent of residents rated Wilsonville an excellent or good place to live during the City's most recent Community Survey.

We don't do it alone. Wilsonville is fueled by the passionate support from many non-profits, community groups, boards and commissions, youth sports organizations, service clubs, churches and other selfless volunteers who kindly contribute thousands of hours of service to our community.

On behalf of the City Council and City of Wilsonville employees, thank you to everything you do to make Wilsonville a great place to live, work and recreate.

A white, handwritten signature of Bryan Cosgrove, written in a cursive style, positioned to the right of the text block above.

THE 2018 COMMUNITY SURVEY

Every two years, The City of Wilsonville employs the National Research Center to conduct a resident satisfaction survey. The Community Livability Report includes opinions from a representative sample of 568 Wilsonville residents (margin of error is 4%); the report helps the City understand how residents feel about the services and amenities it provides.

More than 500 communities participate in the National Citizen Survey. Wilsonville can track local attitudes as they change over time and compare local responses against national benchmarks.

Our 2018 survey provided encouraging news, as 94 percent of participants defined their quality of life in Wilsonville as excellent or good. More survey data is included throughout this report. A detailed summary of the survey results is available at: ci.wilsonville.or.us/communitysurvey/



- 95% believe Wilsonville is an excellent or good place to live
- 97% believe Wilsonville is an excellent or good place to raise children
- 97% feel very safe/reasonably safe in their neighborhood

CITY COUNCIL



Tim Knapp
Mayor
since 2009

mayor@ci.wilsonville.or.us



Kristin Akervall
Council President
since 2017

akervall@ci.wilsonville.or.us



Susie Stevens
Councilor
since 2013

stevens@ci.wilsonville.or.us



Charlotte Lehan
Councilor
since 2015

lehan@ci.wilsonville.or.us



Ben West
Councilor
since 2019

west@ci.wilsonville.or.us

In Wilsonville, policy making and legislative authority are vested in the City Council, which consists of a Mayor and four additional Council members. The City Council is responsible for passing ordinances and resolutions, adopting the budget, and hiring the City Manager and City Attorney.

The Mayor and City Council members are nonpartisan; each serves a four-year term. Terms are staggered with three Council positions, including the Mayor, up for election in 2020.

The City Manager oversees work performed by City staff to support the goals and objectives of the City's elected Council and is accountable for carrying out the policies and ordinances of the Council, managing the City's day-to-day operations and appointing department heads.

VIEWING CITY COUNCIL MEETINGS



In Person:

City Council meetings are open to the public. Typically, meetings are held on the first and third Monday of each month, at City Hall, 7 pm. ci.wilsonville.or.us/calendar



Watch on YouTube:

Each City Council meeting is streamed live and archived on the City's YouTube channel. To watch on your computer or hand-held device, visit ci.wilsonville.or.us/wilsonvilletv



Providing Public Testimony

Each meeting begins with a period of citizen input, which provides community members up to three minutes to address City Council directly with questions, comments or items of concern.



Watch on Television:

Meetings are broadcast live on area cable systems, and repeated throughout the month. Xfinity: channel 30
Frontier: channel 32

CITY BOARDS AND COMMISSIONS

The City encourages citizens with an interest in community involvement to apply for volunteer service to one of the many boards and commissions that assist in local governance. Appointments are made by the Mayor and confirmed by a vote of the City Council.

Budget Committee • Development Review Board • Library Board •
Parks & Recreation Advisory Board • Planning Commission • Tourism Promotion Committee

Get involved! For more information, contact the City Recorder: cityrecorder@ci.wilsonville.or.us



WILSONVILLE CITIZENS ACADEMY

The Wilsonville Citizens Academy is a free public engagement program that offers up to 25 participants each year an opportunity to learn in-depth information about City programs and operations.

Open to all Wilsonville residents, the program is designed to prepare participants for leadership positions on City boards or local non-profits. The curriculum includes lectures, tours, networking and other group activities. Typically, the Citizens Academy meets one Thursday evening each month, January to June, at City Hall.

To learn more about the program and how to apply, visit: ci.wilsonville.or.us/academy 



2018 COMMUNITY SURVEY:

- 85% rated services provided by City of Wilsonville excellent or good
- 67% believe City provides excellent or good value of services for taxes paid

2017-18 PROGRESS REPORT

The City of Wilsonville completed a number of City Council and staff initiatives during Fiscal Year 2017-18. Generally, these initiatives support four broad objectives identified in the City Council Work Plan. Read more at ci.wilsonville.or.us/councilgoals

OBJECTIVE 1:

Create a safe, livable community, while promoting an active & connected way of life.

- ✓ Developed a plan that guides future long-term development of Wilsonville Town Center to create a vibrant downtown gathering place.
- ✓ Updated the 2013 Bicycle and Pedestrian Connectivity Map.
- ✓ Identified and approved a preferred alignment for the proposed French Prairie Bridge over the Willamette River, which would provide new connectivity for pedestrians, cyclists and emergency vehicles.
- ✓ Completed improvements to the I-5 Undercrossing Trail, providing a pedestrian/cyclist connection from Boones Ferry Park to Memorial Park.
- ✓ Completed Kinsman Road extension, from Boeckman Rd. to Barber St., increasing connectivity and improving connection for freight delivery.
- ✓ Approved and implemented the Frog Pond West Master Plan, guiding new residential development of 181 acres west of Stafford Rd. and north of Boeckman Rd.
- ✓ Identified and secured funding source for the "Boeckman Dip" Bridge, providing better East to West connectivity and making Boeckman Rd. safer for cars, buses, emergency vehicles, pedestrians, cyclists and school children.
- ✓ Renewed the City's commitment of financial support to Wilsonville Community Sharing to fund critical services for Wilsonville residents in need.
- ✓ Completed several new neighborhoods and a new regional park in Villebois, and new Charbonneau neighborhoods.

OBJECTIVE 2:

Enhance tourism and promote arts and culture.

- ✓ Developed and adopted a Signage & Wayfinding Plan that places identifiable, easy-to-read signage to help guide travelers to popular City destinations.
- ✓ Adopted an updated Tourism Promotion Plan, advancing key components of a tourism-development strategy focused on marketing, capacity-building and a visitor profile study.
- ✓ Approved a two-year tourism marketing and promotion campaign to increase occupancy at Wilsonville hotels, restaurants and attractions.
- ✓ Launched ExploreWilsonville.com, a new comprehensive online guide to showcase the City's events, eateries, hotels and other attractions.
- ✓ Initiated a Community Enhancement Program to develop a strategic plan to guide the city's future investment in artistic and cultural programs and activities.
- ✓ Completed a \$1.35 million renovation to the Wilsonville Library that updated the facility's HVAC system and many interior amenities, including new service desks and access to the outdoor patio.

OBJECTIVE 3:

Ensure protection of our environment and natural resources.

- ✓ Provided a Community Enhancement Grant to support expansion of the Backyard Habitat Certification Program into Wilsonville.
- ✓ Completed a Water Treatment Master Plan Update, and began the \$1.1 million replacement of an outfall pipe to stop leakage and increase future wastewater capacity.
- ✓ Completed a computerized database of more than 24,000 street trees bordering the 79 miles of Wilsonville roadway.
- ✓ Completed a plan to guide future development of Boones Ferry Park.
- ✓ Completed the “Bee Stewards” Pollinator Habitat Improvement Program at the Water Treatment Plant Park and Memorial Park.
- ✓ Successfully submitted a grant proposal yielding more than \$2 million for SMART Transit, which is funding the purchase of two 35-foot electric buses and the required infrastructure to charge the new vehicles.
- ✓ Approved new City Code requiring LED street lights to be installed for future private and public development projects within Wilsonville.
- ✓ Adopted a Parks & Recreation Master Plan, guiding development of the City’s parks and recreational programs and amenities over the next 20 years.

OBJECTIVE 4:

Invest in infrastructure and technology. Be a hub for economic activity and innovation.

- ✓ Adopted I-5 Wilsonville Facility Plan, advocating for construction of a ramp-to-ramp lane over the Boone Bridge during future seismic upgrades. The plan was voted into the Oregon Transportation Commission as an amendment to the Oregon Highway Plan.
- ✓ Completed a third stacking lane at the Wilsonville Rd. on-ramp to Southbound I-5, one of several improvements to mitigate congestion at Wilsonville Rd. during evening rush hour.
- ✓ Instituted innovative form-based City Code standards for the Coffee Creek Industrial Area to set clear and objective design standards that yield connected, campus-like designs & facilitate efficient proposal review.
- ✓ Developed new roads and other infrastructure to support the opening of the new Meridian Creek Middle School.
- ✓ Established an intergovernmental agreement with Tualatin Valley Water District and several nearby cities to form the Willamette Intake Facilities Commission, to develop a more resilient regional drinking water supply. The agreement provides the City with more than \$17 million in future benefits.
- ✓ Developed and launched new websites for the City of Wilsonville, Parks & Recreation, the Wilsonville Library, SMART Transit and Explore Wilsonville.
- ✓ Adopted the Basalt Creek Concept Plan, which guides future infrastructure development of 847 acres of mostly rural acreage between Wilsonville and Tualatin.



*Read more at ci.wilsonville.or.us/councilgoals

CITY FINANCES & ANNUAL BUDGET

A wide array of sources fund the City's operating budget of nearly \$42 million for the 2018-19 fiscal year. This budget is allocated across six program areas: **Public Works, Transportation, Policy & Administration, Community Development, Public Safety and Community Services.**

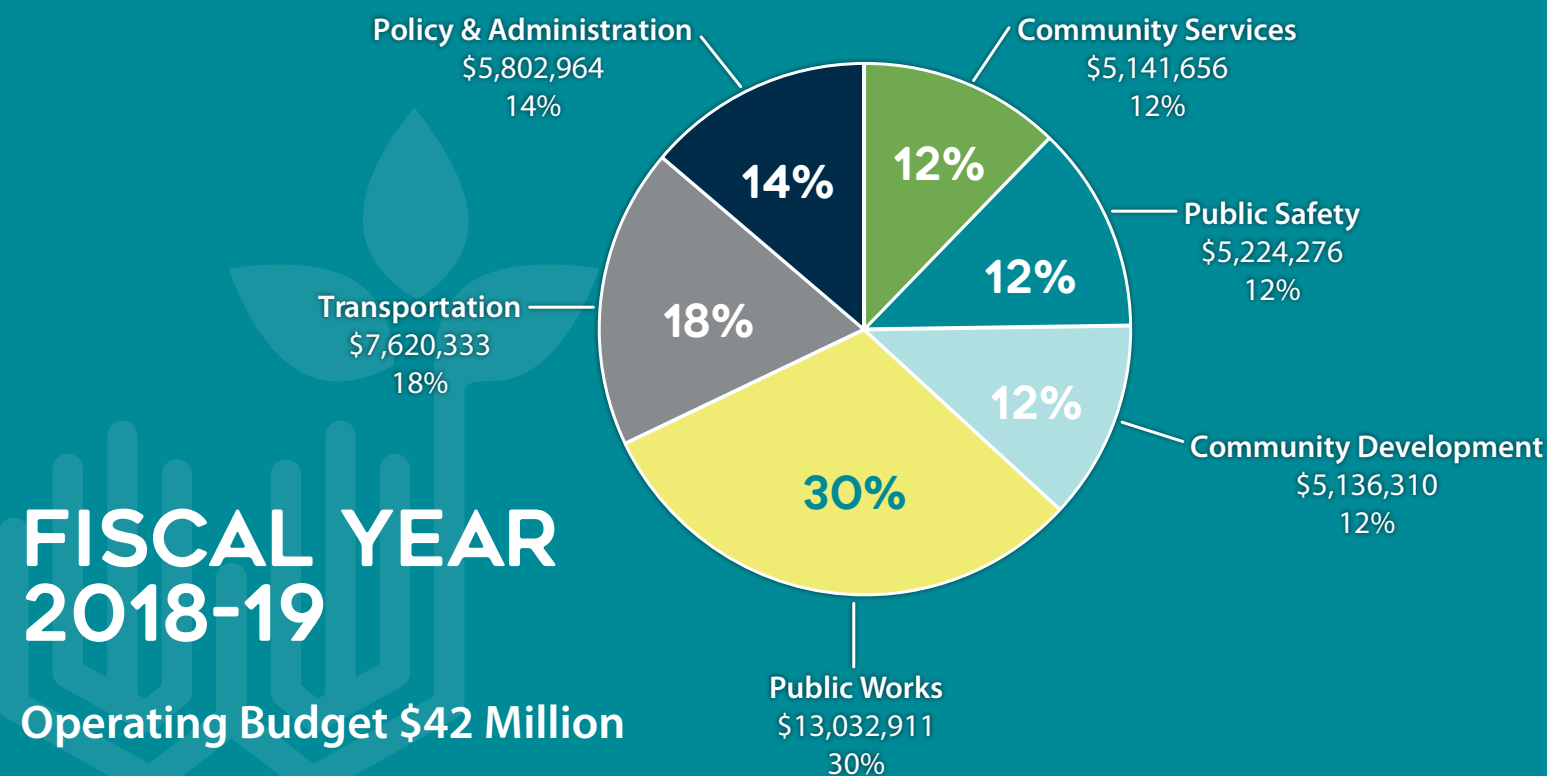
Each program area relies on specific funding sources.

- General Fund Programs -- which include **Policy and Administration, Community Services and Public Safety** -- rely primarily on property taxes, licenses and franchise fees and revenues from other jurisdictions, including the State of Oregon, Washington County, Clackamas County and others.
- **Community Development** funding sources include building permits and fees as well as project management fees received for managing capital projects.
- **Public Works** is funded primarily through the collection of fees for public utility services.
- **Transportation** is funded through payroll taxes and grants.

The City's all-fund budget of \$185.8 million was adopted by City Council in June 2018. The budget includes a Capital Improvement Budget of \$33 million to fund a variety of projects to improve or maintain the City's infrastructure (see next page).

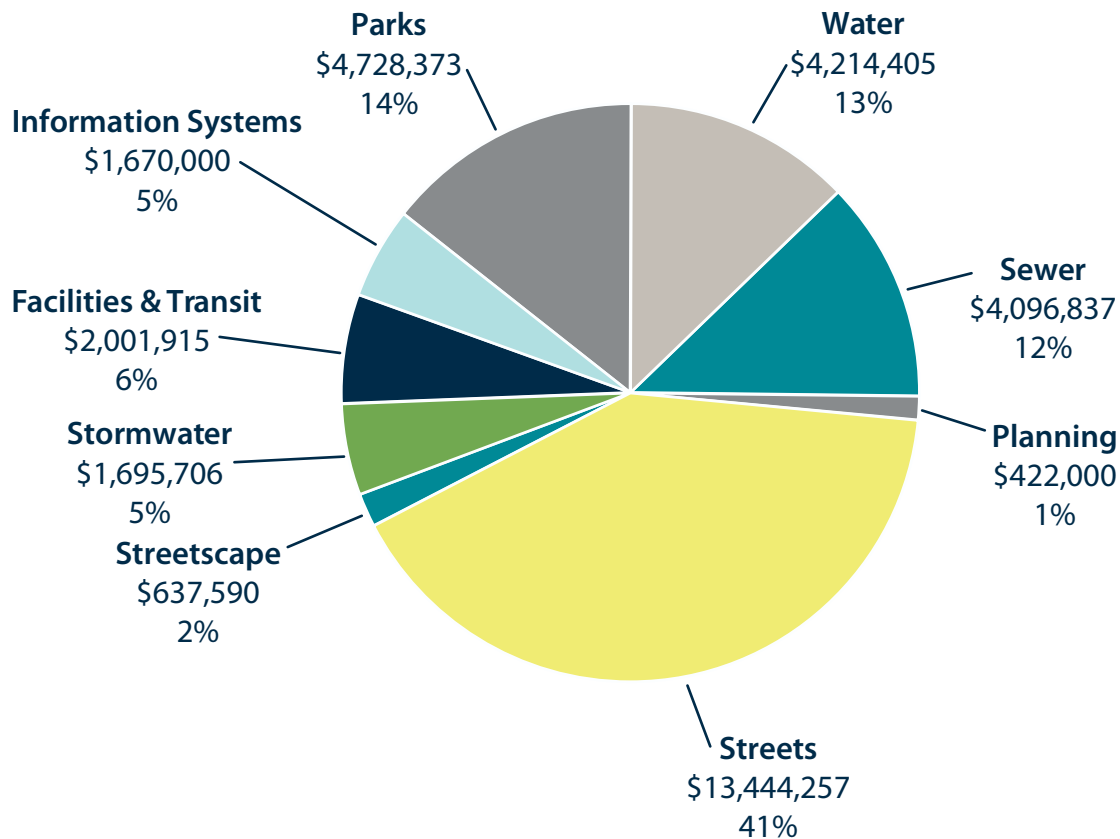
This budget is prepared by City staff, and reviewed and approved by a Budget Committee consisting of the five City Council Members and five volunteer residents, who are appointed to three-year terms by the Council.

Detailed financial information is included in the Adopted FY 2018-19 Budget and the Comprehensive Annual Financial Report (CAFR); both are available at ci.wilsonville.or.us/Finance.



CAPITAL IMPROVEMENTS

The Fiscal Year 2018-19 budget includes a budget of \$33 million for capital improvements to fund a variety of projects to improve or maintain the City's infrastructure.



2018-2019 SCHEDULED CAPITAL PROJECTS

- A 1,500-cubic foot surge tank to protect finished water pumps and transmission line at the Water Treatment Plant.
- Design to accommodate eventual removal of Memorial Park Pump Station out of the flood plain; includes back-up electrical power and improvement of the wet well to handle current and future capacity requirements.
- Repair/Replacement of Wastewater Treatment Plant Outfall to meet DEQ's new discharge compliance requirements.
- Tooze Rd. improvements between 110th and Grahams Ferry Rd., including construction of bike lanes & side-walks, new turn lanes and a signal at Graham's Ferry Road.
- Continued development to accommodate construction of a pedestrian and bicycle bridge over Interstate 5, from Town Center Loop West to Boones Ferry/Barber Street.
- Repair and resurfacing of City streets, including grind and pavement inlay of Wilsonville Rd. between Kinsman Rd. and the west end of town.
- Conversion of street lights to LED lighting to support environmental stewardship and more cost-effective infrastructure.
- New transit shelters and ADA improvements at transit stops throughout the city.
- Electric bus charging stations at SMART Transit Center two accommodate two grant-funded electric buses.
- Replacement of City's enterprise resource planning (ERP) software, which manages core functions including Financials, Utility Billing, Permitting and Human Resources.
- A project at Memorial Park to expand the community garden, relocate the park's dog run and provide more than 30 parking spots.
- Additional Memorial Park improvements, including East Parking Lot improvements and bicycle pump track.
- Engineering efforts to support the proposed French Prairie Bridge, a bike, pedestrian, and emergency vehicle access bridge across the Willamette.
- A stage cover for Town Center Park, which also provides another shelter that people can reserve for private functions.
- Development of future parks in Villebois and Frog Pond West neighborhoods.

SMART TRANSIT



SOUTH METRO AREA REGIONAL TRANSIT

503-682-7790 • 28779 SW Boberg Road

 RideSmart.com

 Facebook.com/RideSMARTransit

SOUTH METRO AREA REGIONAL TRANSIT

Wilsonville's public transit system has served residents for 30 years. SMART provides free fixed-route service within City limits, and also serves Canby, Tualatin, Salem, and South Portland. Additionally, SMART provides Dial-a-Ride (DAR), non-emergency medical trips, and special shuttle services for older adults and people with disabilities. Annual SMART ridership exceeds 300,000 passenger trips.

SMART's fleet consists of 12 diesel buses, nine gasoline buses, two hybrid diesel buses, four compressed natural gas (CNG) cutaways, and a diesel trolley for special events. The fleet is maintained by four mechanics and one manager who have 68 years of experience with City of Wilsonville vehicles.

Successful grant funding is adding two all-electric buses this year and one more in 2020. SMART is aiming for 50% alternative fuel usage by 2022, 100% by 2028.

ANNUAL RIDER SURVEY

SMART's Annual Rider Survey collects information from customers about travel habits, demographics and satisfaction with SMART services. Results help guide SMART staff in planning and marketing decisions.

Learn more at ridesmart.com/ridersurvey 

TRANSIT LOST & FOUND

SMART 503-682-7790

Cherriots (Salem) 503-588-2877

WES (TriMet) 503-962-8686

CAT (Canby) 503-266-4022



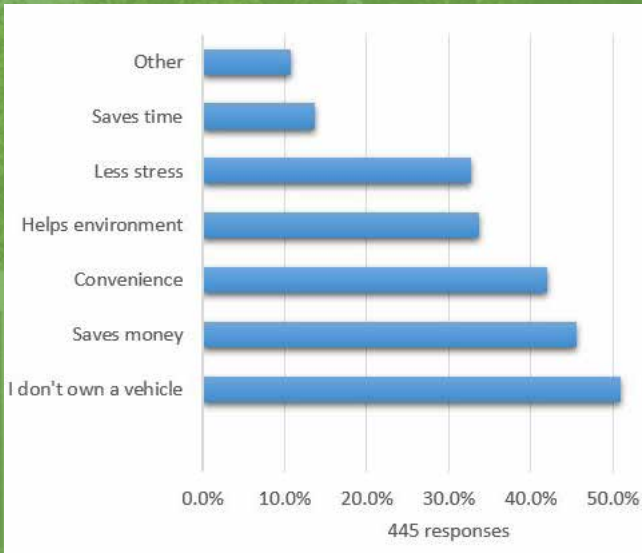
2018 COMMUNITY SURVEY:

- 83% of residents rate bus or transit services as excellent or good
- Among more than 200 communities surveyed, SMART ranked fifth for quality of transit services

TRACK YOUR BUS

Know exactly when the bus is arriving with SMART's live bus tracking technology. Through SMART's live tracking website or mobile app, riders can plan trips, view real-time arrivals, and find amenities and attractions near their destination. Download the SPOT app on Apple and Android devices.

Why do you ride with SMART?



SMART TRANSPORTATION OPTIONS

Transportation Options (TO) programs help provide alternatives that reduce single-occupancy vehicles (SOV) and greenhouse gas emissions.

SMART's Transportation Options programs include:

- Emergency Ride Home
- Individualized Marketing Campaigns
- Regional and National Programs
- Travel Trainers
- Marketing and Outreach
- DEQ Trip Reduction Plan (TRP) and Survey Design/Analysis
- Transportation Fairs
- SMART Art
- SMART Walk at Lunch
- Bike Smart
- Dial-A-Ride

Las personas que hablan español están listas para ayudarte.
Llame al 503-682-7790.

2017-18 PROGRESS

- ✓ SMART was the only transit agency in Oregon to receive a 2017 Low or No-Emission Bus Program grant. The \$1.45 million award funds the purchase of two 35-foot battery-electric buses and charging stations. A third electric bus, made possible through Section 5307 formula funds, will arrive in 2020. Additional grants are funding the purchase of new vehicles, new amenities, facility improvements, driver training and other SMART programs.
- ✓ House Bill 2017, Keep Oregon Moving, established a new source of funding for expanding public transportation service in Oregon. SMART has developed a Program Enhancement Strategy prioritizing enhanced service hours and additional inter-city transit connections as these funds become available in 2019.

SOMETHING FOR EVERYONE!

More than 30,000 people of all ages attended library programs this year.
Discover a program for you!

For Kids

STORYTIME
for babies, toddlers, youth

SCIENCE
for kids of all ages

AFTER-SCHOOL PROGRAMS
fun with books, puppets
and more

For Teens

AFTER-HOURS EVENTS
monthly themed activity nights

AFTER-SCHOOL PROGRAMS
monthly drop-in activities

TEEN ADVISORY BOARD
teens giving input on
library programs

For Adults

DISCUSSION GROUPS
books, philosophy, genealogy

LIVE PERFORMANCES
from music to art to films

CLASSES
4-6 week classes on literature,
history, and more



Community Resources:

Computers and Wi-Fi
Test proctoring
Homebound delivery service
Rotating art displays
"Food For Fines" in February
Passes to local attractions
Notary services
Meeting rooms
Tax assistance
Community outreach
...and many more



2018 COMMUNITY SURVEY:

• 96% of residents rated the Wilsonville Library as excellent or good

A YEAR OF RENEWAL

- ✓ The library underwent a \$1.35 million Library renovation in early 2018, yielding several new amenities, including new reception desks, HVAC and restroom improvements, updated teen and children's areas, paint, carpeting and doors providing access to the children's area patio.
- ✓ The library launched a new mobile-friendly website providing visitors with better tools to discover and use library resources.
- ✓ Library Director Pat Duke was named "Librarian of the Year" by the Oregon Library Association for his efforts in promoting Dolly Parton's Imagination Library and early literacy to libraries around the state. As a result of his efforts, most Oregon libraries have signed up to join the program.

WILSONVILLE LIBRARY

503-682-2744 • 8200 SW Wilsonville Road

Come explore the Wilsonville Public Library! We provide a wide variety of services for Wilsonville area residents & businesses. Our mission is to serve as a center for practical information needs, lifelong learning and entertainment.

Our collection includes more than 100,000 items in many formats, supplemented with free electronic resources, professional services and a friendly, knowledgeable staff committed to top-quality service.



LIBRARY HOURS

Monday - Thursday: 10 am - 8 pm

Friday - Saturday: 10 am - 6 pm

Sunday: 1 pm - 6 pm

VISIT US ONLINE



WilsonvilleLibrary.org



[Facebook.com/WilsonvilleLibrary](https://www.facebook.com/WilsonvilleLibrary)

Did You Know?

- We have more than 125,000 digital titles (e-books and audiobooks) available.
- Library volunteers contributed more than 11,000 hours last year.
- Staff and volunteers provide library programs at schools and community events.

GET YOUR LIBRARY CARD!

Free library cards are available to all Wilsonville residents. Just provide a photo ID and proof of address and you're all set!

BUILD YOUR CHILD'S PERSONAL LIBRARY FOR FREE!

Every month, Wilsonville children under the age of five can receive by mail a free book to keep forever, thanks to Dolly Parton's Imagination Library. Sign up for this free service at the Circulation Desk.

SUMMER READING PROGRAM

Readers (and pre-readers) of all ages can participate in the Summer Reading Program. Read books and qualify to enter fun prize drawings. Sign-ups begin in June.

PUBLIC LIBRARY



PARKS & RECREATION



PROGRAMS AND ACTIVITIES FOR ALL AGES

Wilsonville Parks & Recreation offers a wide variety of classes, camps and other programs year-round, including art, sports, music, nutrition, fitness, outdoor adventure and more.

View complete listings at WilsonvilleParksandRec.com

 @WVParksandRec

 facebook.com/WilsonvilleParksandRec

 WilsonvilleParksandRec.com

EXPLORE PARKS, TRAILS AND NATURAL AREAS

The City maintains 16 parks with active and passive recreational opportunities for public use, including play structures, pickleball, disc golf, a dog park, water features and more.

Enjoy nature at Metro's 250-acre Graham Oaks Nature Park, with three miles of trail, a restored oak woodland, a conifer forest and a wetland overlook.

Community Gardening

The City's community garden at Memorial Park has 134 in-ground plots, 21 raised beds, on-site water, a compost area and is protected by a deer fence. Each spring, plots may be reserved for a small fee on a first-come, first-served basis. Call 503-783-PLAY to learn more.

Park Shelter & Facility Rentals

Four park shelters, as well as the Stein-Boozier Barn at Memorial Park, are available to rent for weddings, company picnics and other events.

The Community Center is available for weekend rentals. Host receptions, meetings and parties in the large multi-purpose room, equipped with audio/video systems, a commercial kitchen and three classrooms.


For more information on rentals, call 503-783-PLAY.



Join Us...

AT THESE AND OTHER ANNUAL COMMUNITY EVENTS

Mother Son Night Out
Daddy Daughter Dance
Community Egg Hunt
W.E.R.K. Day
Movies in the Park
Block Party
Harvest Festival
Fall Frolic 5K / Kids' Dash
Community Tree Lighting

For dates, times and other community event listings, visit WilsonvilleParksandRec.com/calendar 

Master Plans Complete

Parks & Recreation staff completed two long-range plans to help shape the long-term future of Wilsonville's park and recreation system.

- ✓ The **Parks & Recreation Comprehensive Master Plan** includes analysis of current parks and recreation facilities, programs and services and the community's future needs and desires. The plan includes recommendations of changes and/or enhancements to parks, facilities and recreational programs.
- ✓ The **Boones Ferry Park Master Plan** guides the vision for an expanded 15-acre park on the bank of the Willamette River. The plan increases river access and accommodates new recreational amenities, including the proposed French Prairie Bridge, a non-motorized watercraft launch, river overlooks, a dog run, bike skills course and new playground. Additional paved and soft-surface trails are also planned.

Visit Us At:

Parks & Recreation Admin. Office
29600 SW Park Place
503-783-PLAY

Community Center
7965 SW Wilsonville Road
503-682-3727



PUBLIC SAFETY

The City contracts with the Clackamas County Sheriff's Office to provide law enforcement services. This agreement allows Wilsonville to benefit from efficiencies and specialized services available to a large law enforcement agency, including SWAT, Aviation Unit, Marine Unit, Crash Reconstruction Team, Crime Scene Investigation Unit and more.

Wilsonville's dedicated force of 20 includes Chief of Police, a School Resource Officer, Community Service Officer, a detective, a motorcycle officer and 15 deputies.

2017-18 TECHNOLOGY UPGRADES

- ✓ In Clackamas County Sheriff's Office has launched a new, more efficient records management system, used to write and file police reports, manage property and evidence, and share information with other agencies. The new product has expedited report writing, allowing officers to spend more time on patrol.
- ✓ An outdated call dispatching system was upgraded and installed by Clackamas County Communications 911 to improve response times. The system has the ability to use GPS information to locate the police vehicle in nearest proximity to each incident.



Police Chief Rob Wurpes

Police Chief Rob Wurpes

Appointed in October 2017

Rob Wurpes is a lieutenant with 19 years of service to the Clackamas County Sheriff's Office, where he has served as Marine Patrol Officer, Search and Rescue Diver, patrol sergeant, public information officer, watch commander, police chief for the former City of Damascus and, most recently, as a task force lieutenant with the inter-agency TriMet police. He is also an Emergency Medical Technician (EMT) and Army combat veteran. In 2008, he was named Oregon's marine officer of the year by the Oregon State Marine Board, and received an international award for his work in water rescue.

Other 2017-18 Appointments to Wilsonville Police Department:

A.J. Ajir, Sergeant; Corey Alexander, Detective; Eric Lee, Sergeant;
Tyler Van Wormer, Traffic Enforcement Officer

WILSONVILLE POLICE DEPARTMENT

30000 SW Town Center Loop E., Wilsonville OR 97070

Emergencies: 9-1-1
Non-Emergency Dispatch: 503-655-8211
Office: 503-682-1012

 @WilsonvillePD

 facebook.com/WilsonvillePoliceDepartment

 ci.wilsonville.or.us/police

OTHER PUBLIC SAFETY RESOURCES

Tualatin Valley Fire & Rescue: 503-649-8577
Mental Health Crisis Line: 503-655-8585 (Clackamas County)
503-291-9111 (Washington County)
Domestic Violence
Enhanced Response Team: 503-785-5000 (Clackamas County)
Clackamas Women's Services: 503-655-8600 (Clackamas County)





NATIONAL NIGHT OUT

Wilsonville supports National Night Out, a public safety initiative developed to build trust and camaraderie among local emergency responders and the communities they serve. On the first Tuesday in August, representatives from Wilsonville Police Department and Tualatin Valley Fire & Rescue visit local block parties to mingle and help make our neighborhoods more caring & connected. Learn more at ci.wilsonville.or.us/NationalNightOut

TUALATIN VALLEY FIRE & RESCUE

Fire protection and emergency medical services in Wilsonville are provided by Tualatin Valley Fire & Rescue, which serves a 390-square mile service area that also includes Beaverton, Durham, King City, Newberg, North Plains, Rivergrove, Sherwood, Tigard, Tualatin and West Linn.

The agency has 25 fire stations – two in Wilsonville – staffed by more than 400 firefighters.



 tvfr.com

 facebook.com/TualatinValleyFireandRescue



2018 COMMUNITY SURVEY:

- 97% of residents said they feel safe in their neighborhood
- 81% of residents rated Police services favorably
- 94% of residents rated Fire services favorably
- 91% of residents rated Ambulance/EMS services favorably

THE FUTURE OF

The City's long-range planning efforts help prepare for the future growth of commercial, industrial and residential neighborhoods within city limits and urban growth boundary areas. Long-range projects typically require several years of planning, engineering and consideration by the City's boards and commissions before development begins. Projects commonly include plans for new roads and the development of other infrastructure to support new growth.

1

BASALT CREEK PLANNING AREA

The 847-acre Basalt Creek area is generally located between Tualatin and Wilsonville, and includes an area to the west of Coffee Creek Correctional Facility known as the West Railroad Planning Area. In 2004, Metro added these areas to the Urban Growth Boundary (UGB) for future residential and industrial uses. Learn more at BasaltCreek.com.

✓ **2017-18 progress:** The cities of Wilsonville and Tualatin collaborated on the Basalt Creek Concept Plan, which defines future jurisdictional boundaries and land uses. The plan was adopted by both cities in June 2018

2

COFFEE CREEK INDUSTRIAL AREA

In November of 2015, Wilsonville residents voted to support the creation of a new urban renewal area in the 225-acre Coffee Creek area, a future employment center in northwest Wilsonville that could serve 1,500 jobs when completed. Learn more at ci.wilsonville.or.us/coffeecreek.

✓ **2017-18 progress:** An innovative form-based design code was adopted to provide clear and objective standards to provide applicants additional flexibility and support high-quality design.

3

FRENCH PRAIRIE BRIDGE

The French Prairie Bridge is a proposed bicycle/pedestrian/emergency-access crossing of the Willamette River, to be located west of the I-5 Boone Bridge. The City and Clackamas County are leading a project to plan and develop preliminary designs to fill a critical gap in the regional multi-modal transportation infrastructure, connecting the Portland Metro area to the Willamette Valley Scenic Bikeway. Learn more at FrenchPrairieBridgeProject.org.

✓ **2017-18 progress:** City Council and the County Board of Commissioners adopted a preferred bridge location, west of Boones Ferry Park, that was recommended by the public task force.

4

FROG POND NEIGHBORHOOD

Frog Pond is comprised of three areas (West, East, South) in east Wilsonville. The 181-acre 'west' neighborhood – north of Boeckman Road & West of Stafford Road – is the first area being developed. The East (186 acres) and South (85 acres) areas are approved by Metro for 2018 UGB expansion. Learn more at ci.wilsonville.or.us/frogpond.

✓ **2017-18 progress:** Frog Pond West master plan approved in 2017, and the first single-family residential developments were approved in summer 2018.

5

ICE AGE TONQUIN TRAIL

The 22-mile trail plan connects Sherwood, Tualatin and Wilsonville, giving commuters new ways to get to work, shopping and schools and providing access to many of the region's most spectacular scenery and parks.

6

BIKE/PEDESTRIAN BRIDGE OVER I-5

A plan to build a pedestrian/cyclist bridge over the Interstate, at Barber St., is designed to provide a new multi-modal connection that makes the SMART Transit Center accessible to Wilsonville Town Center and other locations east of the freeway.

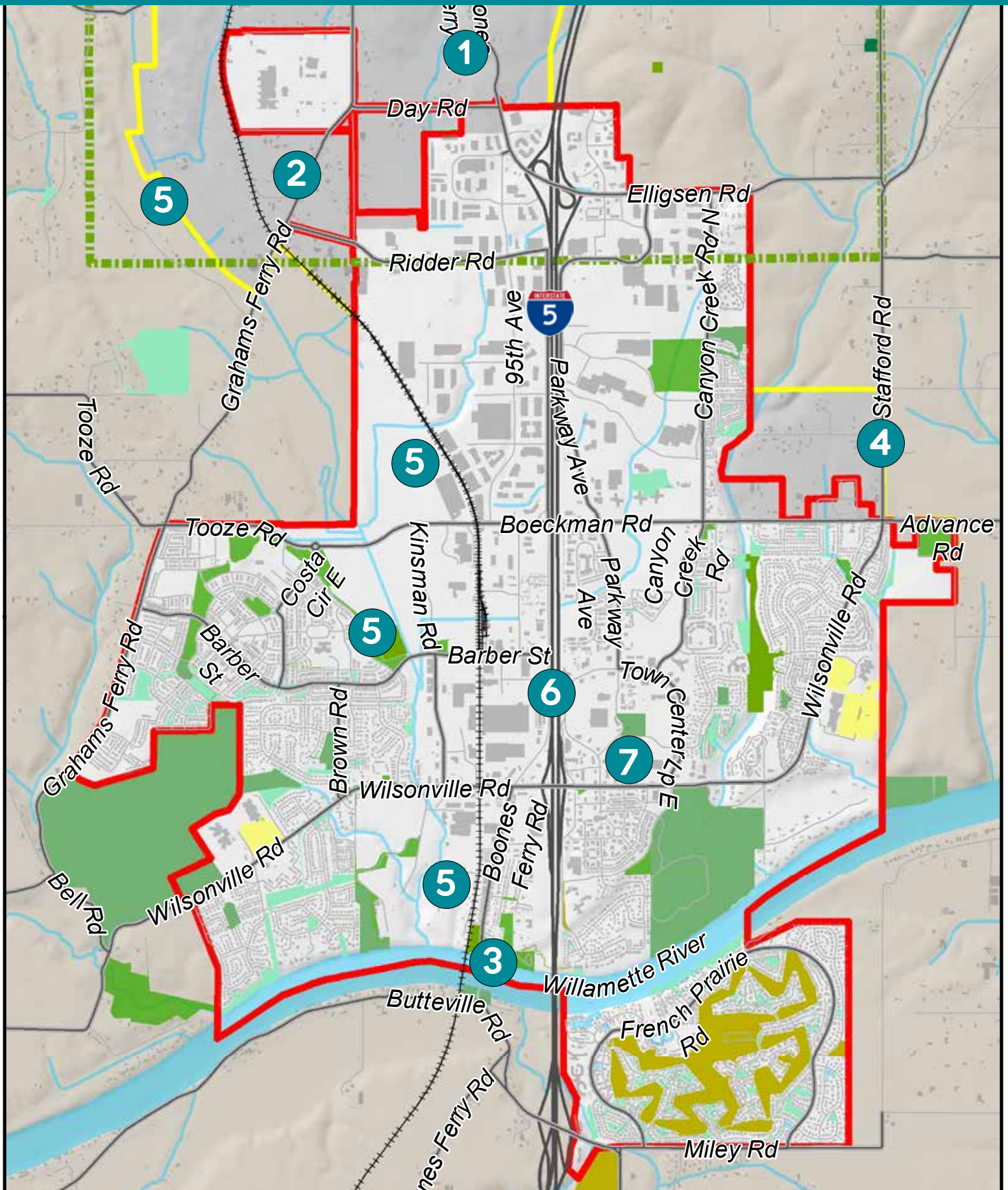
7

WILSONVILLE TOWN CENTER

Town Center includes about 100 acres within and adjacent to Town Center Loop, north of Wilsonville Rd. A hub of shopping, recreation, education and civic activity, the area was originally developed without a unified vision. The Town Center Plan is a community-driven effort to develop an attractive, accessible gathering place for people to eat, live, work, learn and play. Learn more at WilsonvilleTownCenter.com.

✓ **2017-18 progress:** extensive public outreach was analyzed, and a Concept Plan drafted for Planning Commission and City Council consideration in 2019.

F WILSONVILLE



SOCIAL SERVICE

Wilsonville Community Center

A hub of activity, Wilsonville's Community Center hosts classes, fitness programs and other events. The Center supports life-long learning with classes available through Wilsonville Parks and Recreation.

Many free drop-in programs and ongoing activities are also available. See a schedule of events at wilsonvilleparksandrec.com/calendar 

SUPPORT GROUPS AND CLINICS

The Community Center provides a variety of free and low-cost health screenings and support groups to foster healthy living, including caregiver support, blood pressure checks, foot care, wheelchair and walker repair, Medicare 101, law clinic consultations and Alzheimer's awareness. Call 503-682-3727 to learn more.

LUNCH PROGRAM

The Community Center serves lunch at noon every Monday, Tuesday, Wednesday and Friday. Drop-in for a hot, nutritious meal and lunch-time entertainment. Donations are encouraged, but not required: \$3.50 (ages 60+), \$4.25 (age 59 and under)

Our Home Delivered Meals Program provides weekday meals to home-bound seniors and people with disabilities, including those recovering from surgery or illness. Our great volunteer drivers support this free service; donations are gladly accepted. Call 503-682-3727 to arrange meal deliveries.

SOCIAL SERVICES

The Community Center's on-staff social worker helps individuals over the age of 60 live independently and in their own homes for as long as possible, and refers clients to Clackamas County and other agencies for additional assistance as needed. An advocate for seniors, this staff member can help to determine level of care requirements to inform decisions regarding a person's psychological, medical and/or social needs. Please contact 503-570-1526 to learn more.

MEDICAL EQUIPMENT LOAN PROGRAM

The Community Center is happy to offer a free medical equipment loan program. Items typically available include wheelchairs, walkers, bath benches and commodes. Please contact 503-570-1526 for more information.



COMMUNITY CENTER
30000 SW Town Center Loop E.,
Phone: 503-655-8211

Open weekdays, 8 am-5 pm



RESOURCES & SUPPORT

Community Service Providers

A community that cares, Wilsonville is fortunate to have the incredible support of many compassionate individuals and organizations that provide resources to help people in need.

WILSONVILLE COMMUNITY SHARING

28925 SW Boberg Rd. • wilsonvillecommunitysharing.org • 503-682-6939

This non-profit agency operates Wilsonville's food bank and also connects individuals and families in need with resources, including help with rent, utilities and prescription medication. The food bank is open each Tuesday (1-3 pm / 6-8 pm).

HEART OF THE CITY

28925 SW Boberg Rd. • theheartofthecity.org • 503-582-8680

Through partnerships with local non-profits and organizations, this outreach center provides compassionate care and resources for vulnerable community members. HOTC's care aims to help heal the body, mind and soul of neighbors in need.

2-1-1 INFO

Oregonians may dial 211, download the 211info mobile app, visit 211info.org, text their ZIP code to 898211 or email contact@211info.org to access services confidentially and at no charge. 211 Info has staff and interpreters available to accommodate speakers of more than 200 different languages.

HEATING/COOLING CENTERS

When unseasonable weather strikes, the following locations are available as heating/cooling centers:

- Community Center, 7965 SW Wilsonville Road
- Wilsonville Library, 8200 SW Wilsonville Road



SOCIAL SERVICES DIRECTORY

Directory Assistance / Dispatch	2-1-1
Clackamas Women's Services	503-655-8600
Community Sharing/Food Bank	503-682-6939
Energy Assistance	503-650-5640
Heart of the City	503-582-8680
Mental Health Crisis (Clackamas Co.)	503-655-8585
Mental Health Crisis (Washington Co.)	503-291-9111
Senior Loneliness Line	503-200-1633

For more information on social services available in the area, visit:

clackamas.us/socialservices 
co.washington.or.us/Housing/Programs/community-resources.cfm 




The West Linn–Wilsonville School District

The West Linn–Wilsonville School District serves nearly 10,000 students in West Linn, Wilsonville, and rural Clackamas County. The district is guided by an elected five-member board, headed by Superintendent Dr. Kathy Ludwig.

The district believes its commitment to staff development elevates the quality of teaching. West Linn–Wilsonville schools consistently post one of the highest graduation rates in the state among large districts; Scholastic Aptitude Test (SAT) scores are among Oregon’s highest.

Approximately 90 percent of West Linn–Wilsonville graduates advance to two- or four-year colleges. The district operates Three Rivers Charter School and CREST, the Center for Research in Environmental Sciences and Technologies — a center to support STEM learning — and offers a variety of Career Technical Education courses to prepare students for college and career.

West Linn–Wilsonville School District Resources

- **SafeOregon Tip Line** — West Linn–Wilsonville schools use SafeOregon Tip Line, a free resource where students, parents, and school communities can anonymously report safety threats or potential acts of violence: safeoregon.com.
 - **Safety and Security in the WLWV School District** — Learn how district prioritizes safety, review policies, protocols, and more: wlwv.k12.or.us/domain/2549.
 - **ListServ Email** — Community members can sign up for district-wide and school-specific news: wlwv.k12.or.us/News/LatestNews/ListservSS/
 - **FlashAlert** — Receive inclement weather and emergency notifications, and download the FlashAlert Messenger app for your mobile device: flashalert.net/login/
 - **Registration Information** — New and incoming students can learn about WLWV registration: wlwv.k12.or.us/domain/88.
 - **Student Services** — Special education programs, counseling, and health services support the success of WLWV students. Learn more, including early childhood education and adult transition services: wlwv.k12.or.us/Page/3314.
 - **Volunteer in WLWV** — The district’s volunteer registration and sign-in process monitors exactly who is working in WLWV schools. Join our dedicated volunteer team or learn more: wlwv.k12.or.us/domain/2651.
 - **Bus Routes** — Where do school buses stop in Wilsonville? Routes available at wlwv.k12.or.us/buses. WLWV contracts First Student (503-570-8604) for busing services.
 - **Nutrition Services** — Learn more about breakfast and lunch services in WLWV schools: wlwv.k12.or.us/domain/42.
- For more information, including school-specific resources, visit www.wlwv.k12.or.us** 

School Directory

West Linn–Wilsonville School District Administration – 503-673-7000

Boeckman Creek Primary School – 503-673-7750
 Boones Ferry Primary School – 503-673-7300
 Lowrie Primary School – 503-673-7700
 Inza Wood Middle School – 503-673-7500
 Meridian Creek Middle School – 503-673-7450

Wilsonville High School – 503-673-7600
 Arts and Technology High School – 503-673-7375
 Center for Research in Environmental Sciences & Technologies (CREST) – 503-673-7350
 Three Rivers Charter School – 503-673-7850

RESOURCE GUIDE

Looking for something?

The best place to find answers is our website: ci.wilsonville.or.us 

The list below provides resources to help address many of the City's most commonly searched terms and frequently asked questions.

Animal Control: In Clackamas County, call 503-655-8628. In Washington County, call 503-846-7041.

Animal Removal (from roadway only): Call Public Works at 503-682-4092.

Building Inspections: Call 503-682-4159.

Bulky Waste Day: Scheduled each May and October. For dates, see ci.wilsonville.or.us/calendar.

SMART Bus Schedules: Call 503-682-7790 or visit ridesmart.com.

Business Licenses: Call 503-570-1586.

Fountains at Town Center Park and Murase Plaza: Call 503-685-6356.

Grant Opportunities: Online at ci.wilsonville.or.us/grants/.

Marriage Licenses: In Clackamas County, call 503-655-8551. In Washington County, call 503-846-8752.

Noise Ordinances: See City Code, Chapter 6 at ci.wilsonville.or.us/citycode.

Notary Services: Call or visit City Hall at 503-682-1011 or the Wilsonville Library at 503-682-2744.

Passports: Contact the Post Office at 503-570-7703.

Permits: Visit ci.wilsonville.or.us/building/page/do-i-need-permit.

Street Cleaning: Visit City's website or call Public Works at 503-682-4092.

Street Light Outage: Visit portlandgeneral.com/forms/report-streetlight-problem.

Street Parking: See City Code, Chapter 5 at ci.wilsonville.or.us/citycode.

Traffic Safety Concerns: Report online at ci.wilsonville.or.us/traffic-concerns/.

Tree Removal: A permit is required for removal of any tree over six inches in diameter. Call 503-682-4960.

Utility Bill Payments:

Water, Sewer: Online at ci.wilsonville.or.us/utility-billing, at City Hall or at 503-570-1610.

Electricity: Online at portlandgeneral.com or call PGE at 800-542-8818.

Waste Removal/Recycling: Online at republicservices.com or call 503-682-3900.



ADDITIONAL ONLINE RESOURCES

Chamber of Commerce: wilsonvillechamber.com

Tourism/Visitor Information: explorewilsonville.com

State of Oregon: oregon.gov

Oregon Metro: oregonmetro.gov

Clackamas County: clackamas.us

Washington County: co.washington.or.us



VOLUNTEERS MAKE A DIFFERENCE

The City of Wilsonville is grateful for the support of more than 400 volunteers, who contributed approximately 20,000 hours last year to support City programs, projects and events. If you have time to spare and a desire to make a difference, join us. We have a variety of activities to accommodate many interests, talents and schedules.

Sign up once, or on a weekly, monthly or annual basis, and bring your friends, family or co-workers! Our tremendous volunteers provide critical support to the Community Center, Parks & Recreation, Public Works, Wilsonville Library, SMART Transit and other City programs. **Learn more and apply at ci.wilsonville.or.us/volunteers.** ↗

WHAT'S UP IN WILSONVILLE?

Stay connected! Learn about City news, events, meetings and more.

- 🌐 City website: ci.wilsonville.or.us
- 📘 Facebook: @CityofWilsonville
- 📷 Instagram: @city_of_wilsonville
- 🐦 Twitter: @WilsonvilleOR
- 📍 You can also find us on Nextdoor and YouTube!



OFFICE OF THE CITY MANAGER
29799 SW Town Center Loop East
Wilsonville, OR 97070

Postal Customer