



PLANNING  
COMMISSION  
UPDATE

# WILSONVILLE PEDESTRIAN BRIDGE + PLAZA



# PART 1 - BRIDGE

# PART 2 - PLAZA

## Overview

**EXISTING SITE LOCATION MAP**

**SITE CONTEXT**

**PEDESTRIAN BRIDGE ESSENTIALS**

## Pedestrian Bridge Design Options

**DESIGN OPTIONS OVERVIEW**

**BRIDGE DESIGN CONCEPT**

**CONCEPT RENDERING**

## Questions



**Which bridge design elements are important to prioritize given budget constraints?**



**Are there additional considerations or concerns the team should address in refining the bridge alternatives?**

## Overview

**EAST RAMP + PLAZA ESSENTIALS**

## East Ramp + Plaza Design Options

**DESIGN OPTIONS OVERVIEW**

**PLAZA DESIGN CONCEPT**

**CONCEPT RENDERING**

## Questions



**As the team prepares three plaza concepts for public input, which design elements do you believe best meet the guiding design principles established through the Town Center Plan and recent public engagement, and what elements are missing that could better articulate these aspirations?**



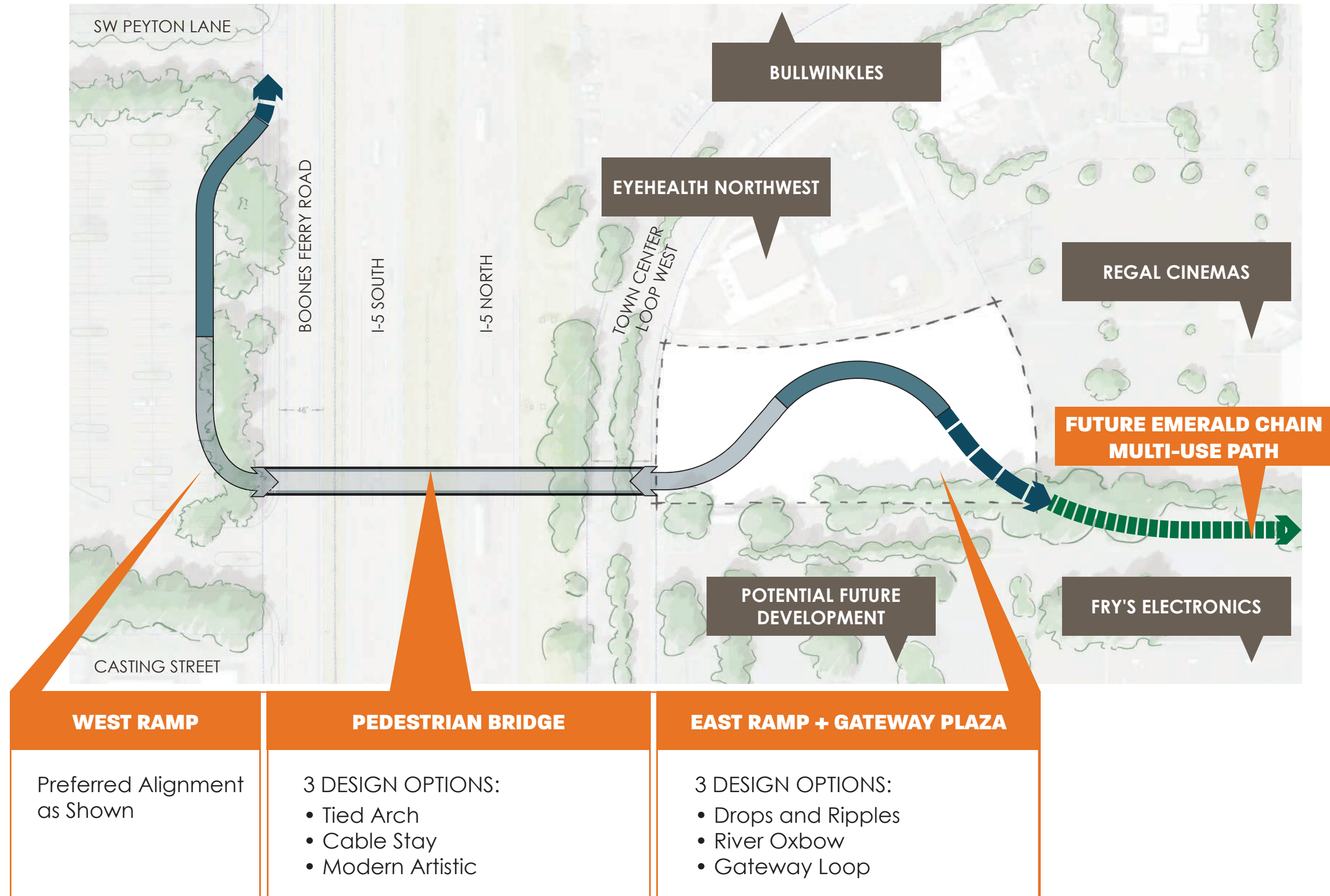
# EXISTING SITE LOCATION MAP



Planning Commission Meeting - July 8, 2020  
I-5 Pedestrian Bridge



# SITE CONTEXT





# PEDESTRIAN BRIDGE ESSENTIALS

All bridge designs incorporate the following elements:

**BRIDGE AMENITIES**

- Separated Modes of Travel
- Unique Lighting
- Natural Features
- Sustainable Features

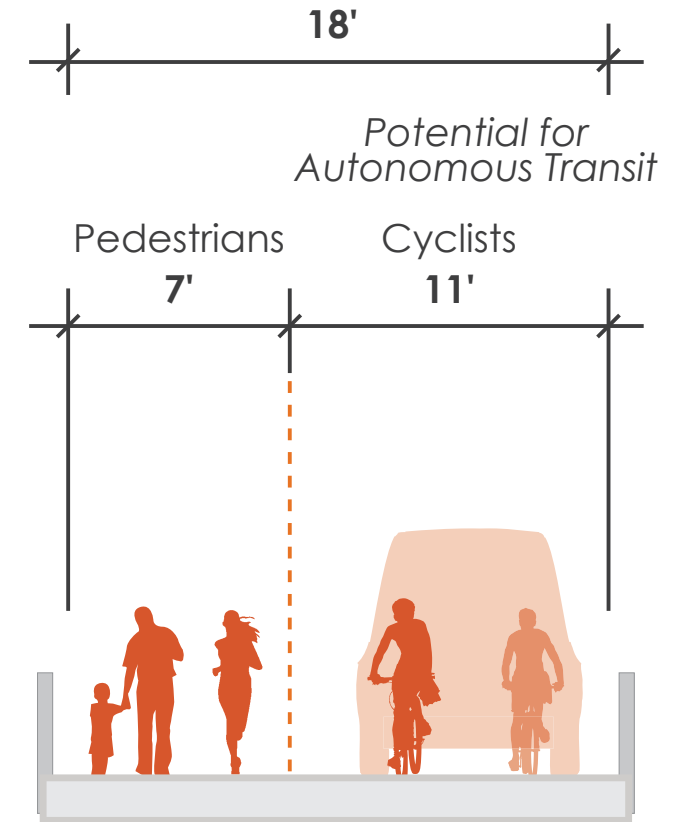
## PRIORITIZING ELEMENTS

1. Bridge and plaza should **integrate nature and sustainable design.**
2. Bridge connections should **support future development.**
3. Plaza should provide **places to stop and rest.**
4. Plaza should **incorporate art.**
5. Bridge as **iconic structure.**

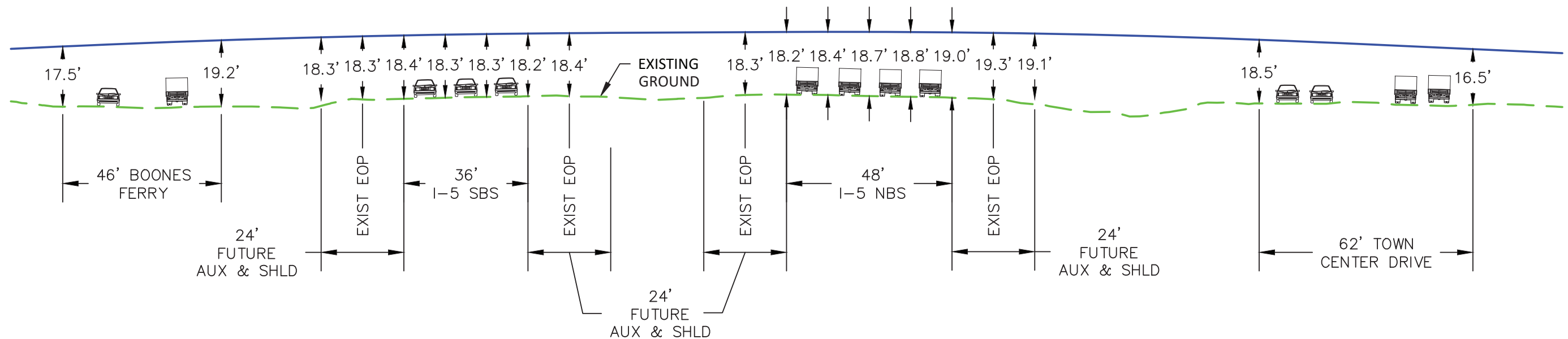
## THEMES THAT RESONATE

1. Harmony with Nature
2. Family Friendly
3. Willamette River/Boones Ferry
4. Inclusive and Welcoming
5. Active and Mobile

## SEPARATED MODES OF TRAVEL



## PEDESTRIAN BRIDGE SPAN AND VERTICAL CLEARANCE



Planning Commission Meeting - July 8, 2020  
I-5 Pedestrian Bridge



PEDESTRIAN BRIDGE DESIGN OPTIONS

Modern Artistic



Tied Arch



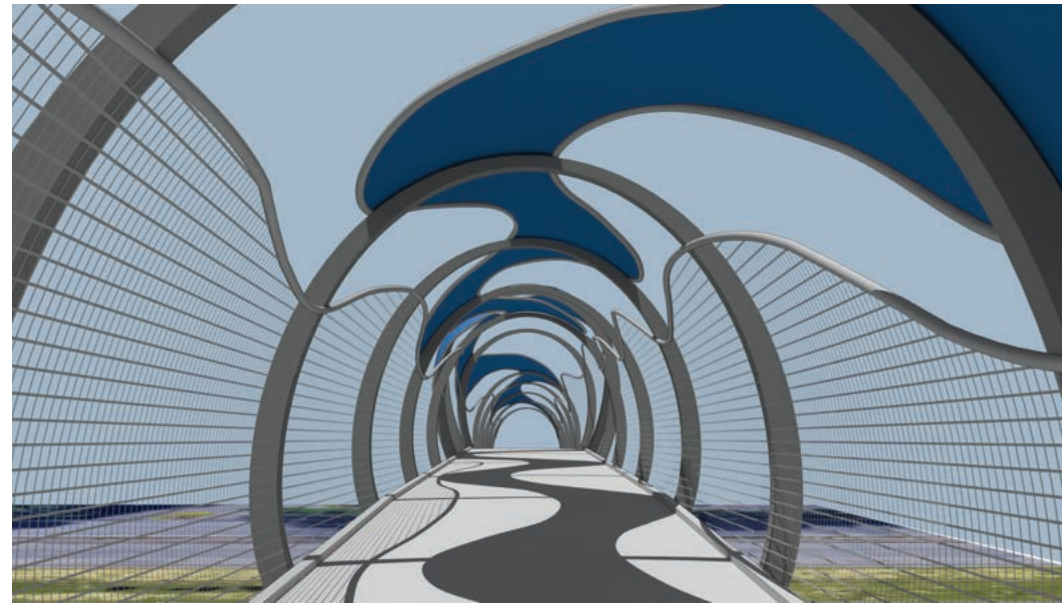
Cable Stay



Planning Commission Meeting - July 8, 2020  
I-5 Pedestrian Bridge



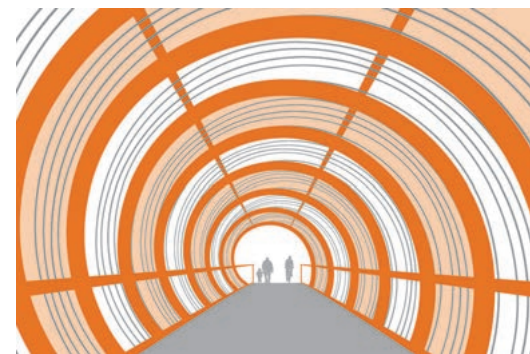
BRIDGE OPTION #1 MODERN ARTISTIC



STRUCTURAL FORM + STYLE



Modern Artistic



Semi-Enclosed

BASELINE COST ALTERNATIVE

\*100%



Planning Commission Meeting - July 8, 2020  
I-5 Pedestrian Bridge



# CONCEPT RENDERING



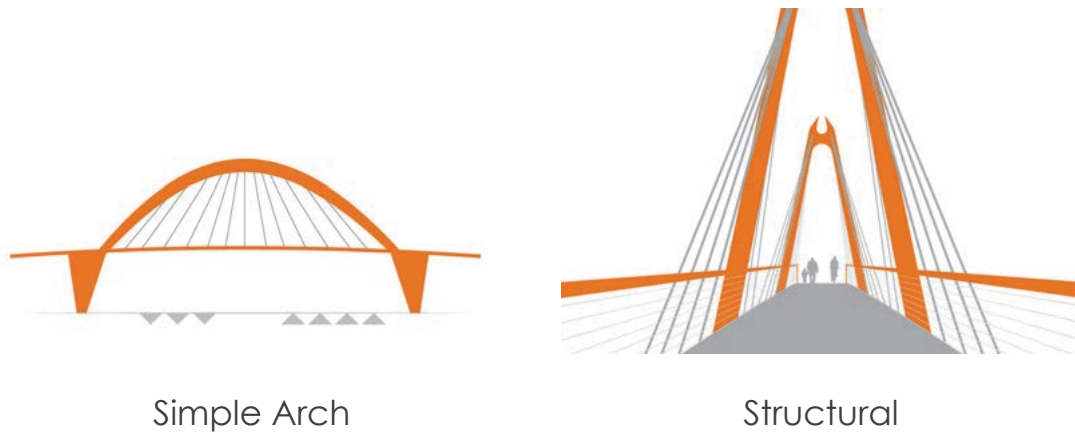
Planning Commission Meeting - July 8, 2020  
I-5 Pedestrian Bridge



**BRIDGE OPTION #2 TIED ARCH**



**STRUCTURAL FORM + STYLE**



**BASELINE COST ALTERNATIVE**

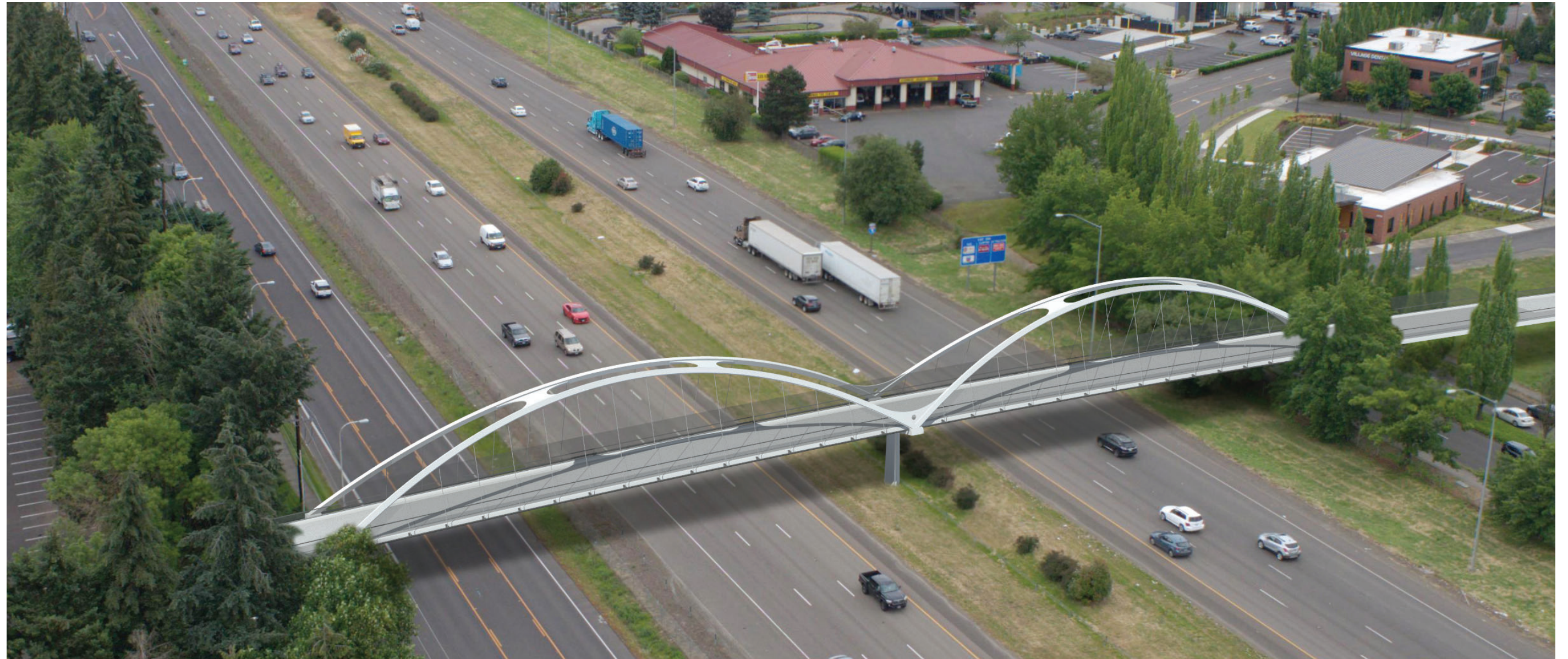
110 to 115%



Planning Commission Meeting - July 8, 2020  
I-5 Pedestrian Bridge



# CONCEPT RENDERING



Planning Commission Meeting - July 8, 2020  
I-5 Pedestrian Bridge

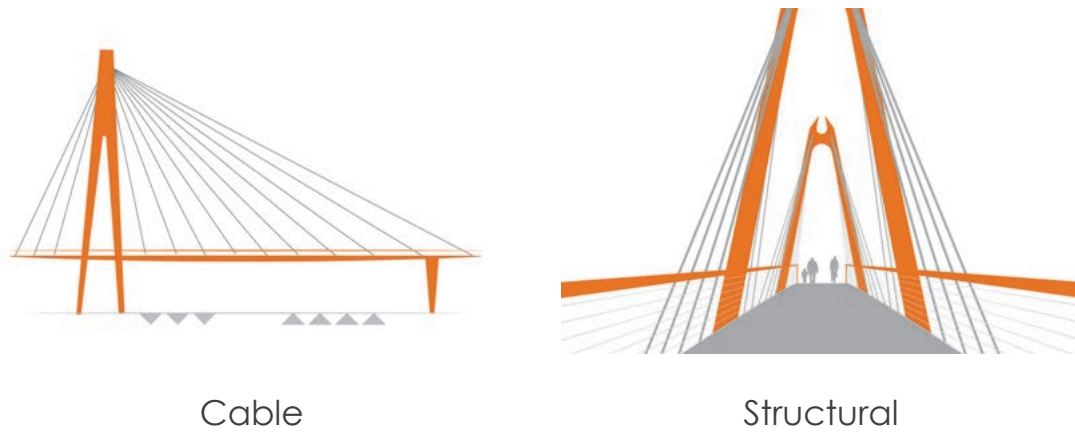
Page 9 of 23



**BRIDGE OPTION #3 CABLE STAY**



**STRUCTURAL FORM + STYLE**



**BASELINE COST ALTERNATIVE**

110 to 115%



Planning Commission Meeting - July 8, 2020  
I-5 Pedestrian Bridge



# CONCEPT RENDERING



Planning Commission Meeting - July 8, 2020  
I-5 Pedestrian Bridge

Page 11 of 23



**PEDESTRIAN BRIDGE DESIGN OPTIONS**

Modern Artistic



Tied Arch



Cable Stay



Planning Commission Meeting - July 8, 2020  
I-5 Pedestrian Bridge





**Which bridge design elements are important to prioritize given budget constraints?**

**Are there additional considerations or concerns the team should address in refining the bridge alternatives?**



# RAMP + PLAZA ESSENTIALS

All east ramp + plaza designs incorporate the following elements:

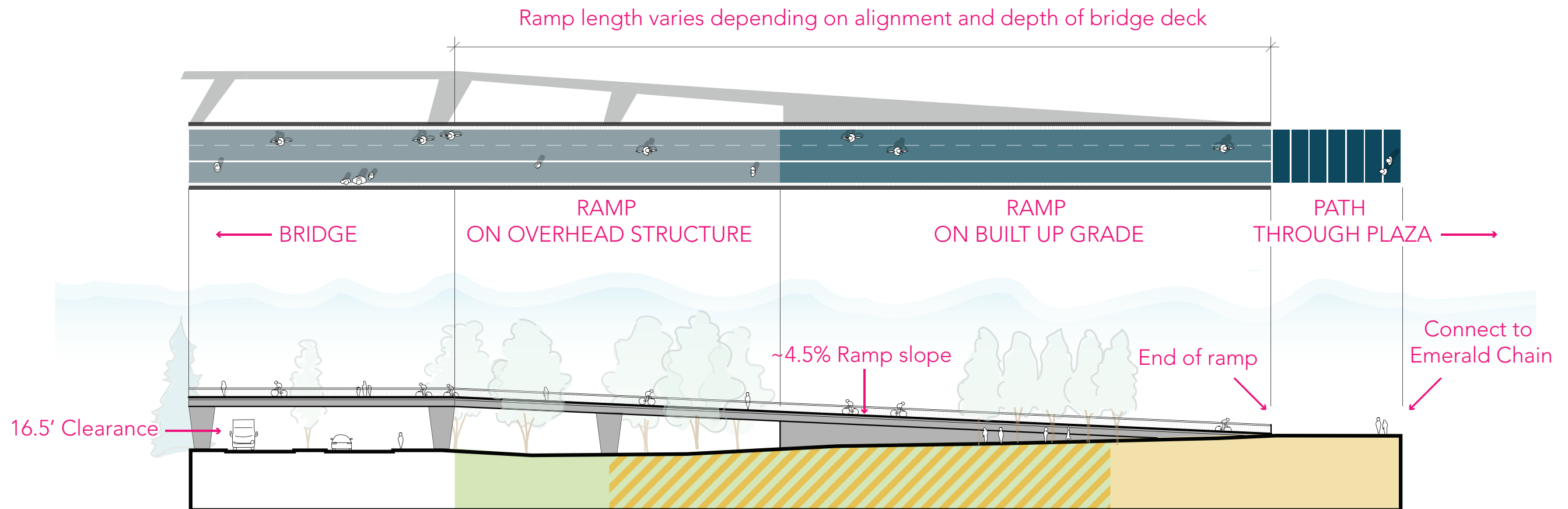
**EAST GATEWAY + PLAZA DESIGN ELEMENTS**

- Sustainable Features
- Extensive Tree Canopy
- Social Seating
- Cyclist Amenities
- Shade/rain Shelter
- Extensive Planting

- PRIORITIZING ELEMENTS**
1. Bridge and plaza should **integrate nature and sustainable design.**
  2. Bridge connections should **support future development.**
  3. Plaza should provide **places to stop and rest.**
  4. Plaza should **incorporate art.**
  5. Bridge as **iconic structure.**

- THEMES THAT RESONATE**
1. Harmony with Nature
  2. Family Friendly
  3. Willamette River/Boones Ferry
  4. Inclusive and Welcoming
  5. Active and Mobile

## EAST GATEWAY RAMP + PLAZA BASIC STRUCTURE



BRIDGE OVER I-5

TOWN CENTER LOOP WEST

STORMWATER TBD

PLAZA SPACE TBD

EMERALD CHAIN CONNECTION

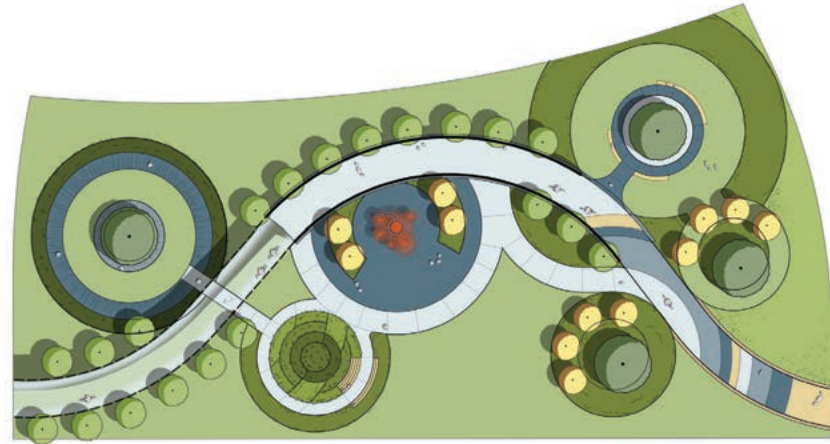
Planning Commission Meeting - July 8, 2020  
I-5 Pedestrian Bridge

Page 14 of 23

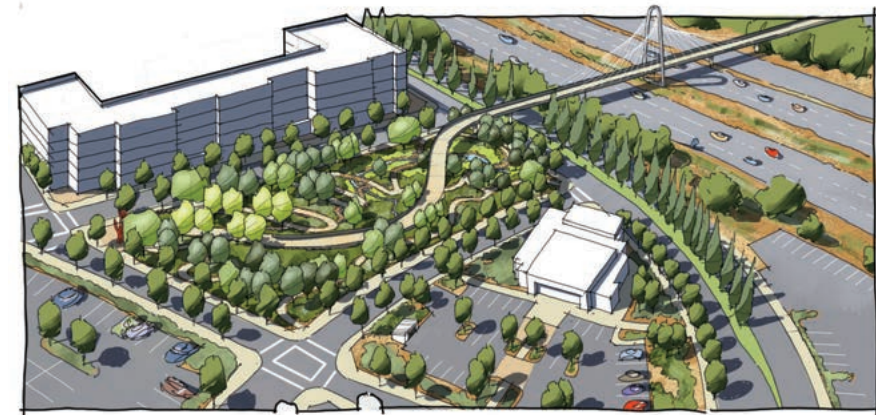
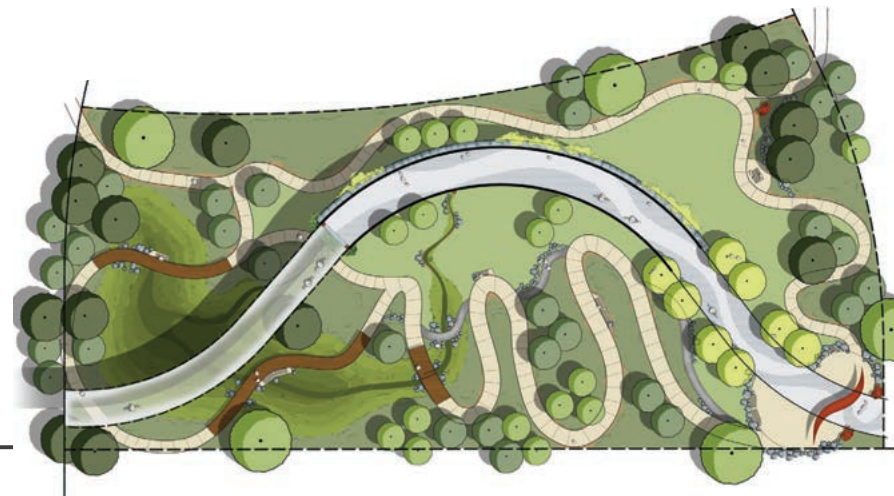


EAST RAMP + GATEWAY PLAZA DESIGN OPTIONS

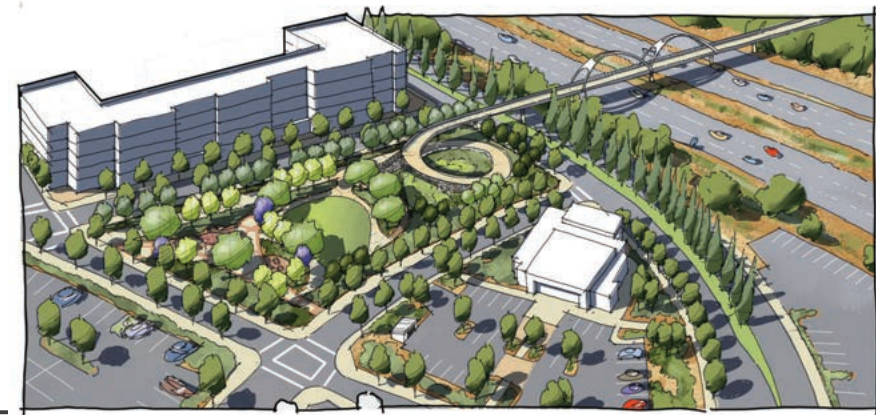
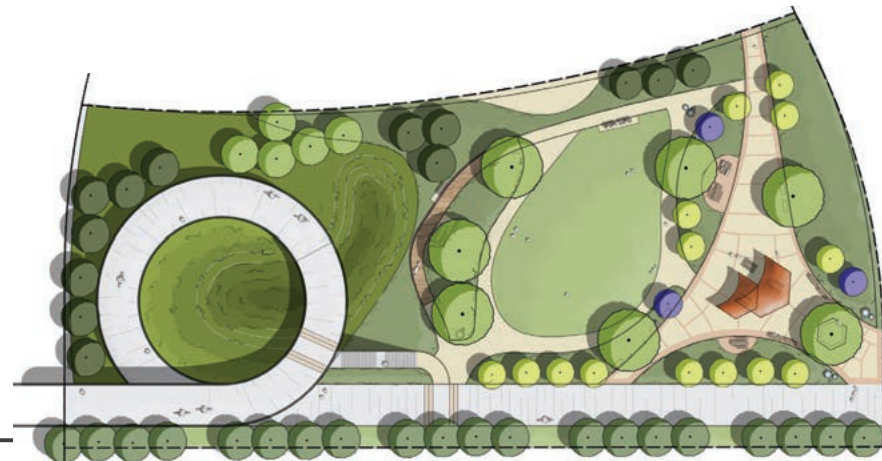
Drops and Ripples



River Oxbow

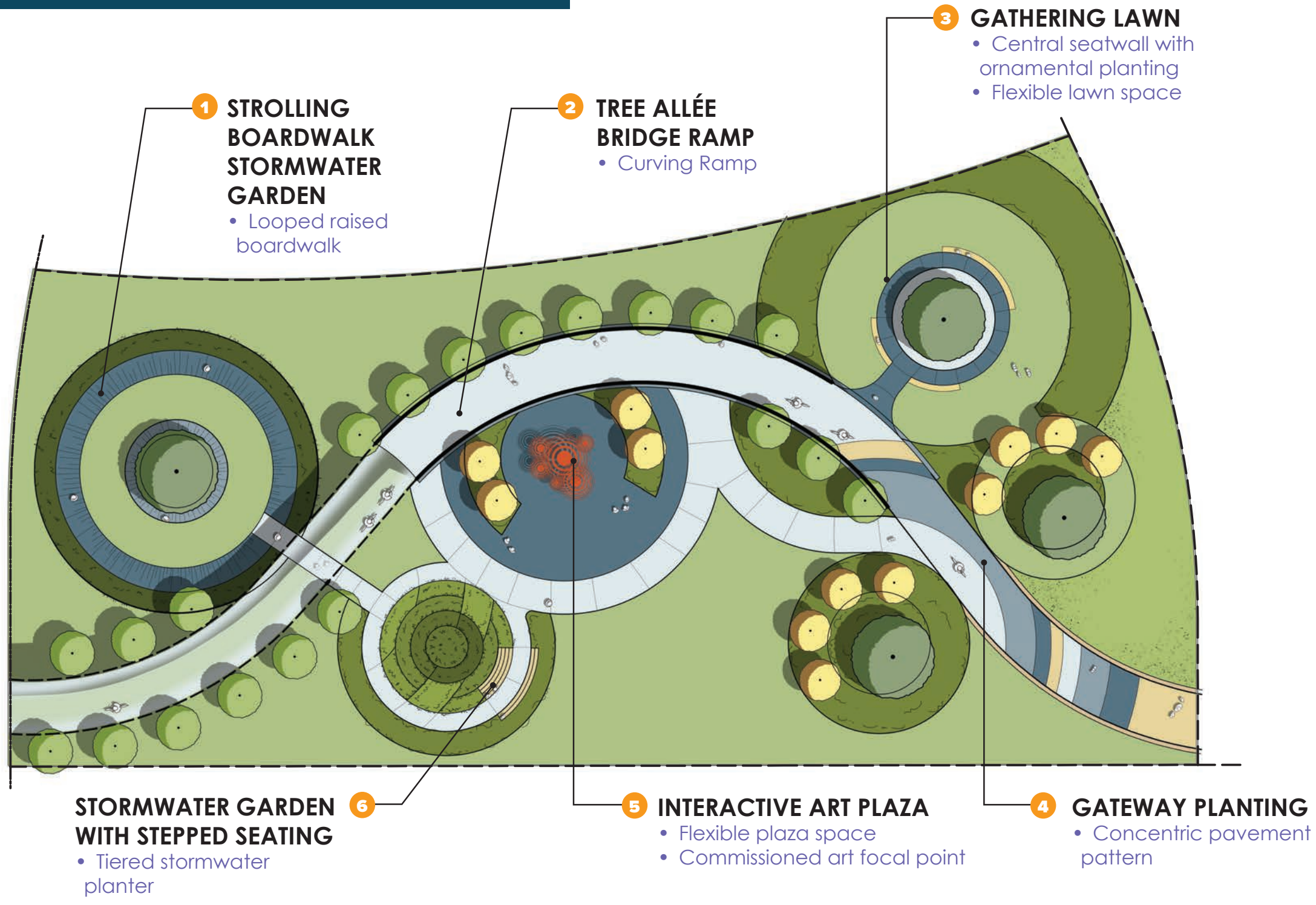


Gateway Loop





**PLAZA OPTION #1 DROPS AND RIPPLES**



**LEGEND**

- ◆ Art (commissioned)
- Tree (new)
- Stormwater Planter
- Ornamental Planter
- Open Lawn
- ▨ Paved Pathway
- Boardwalk

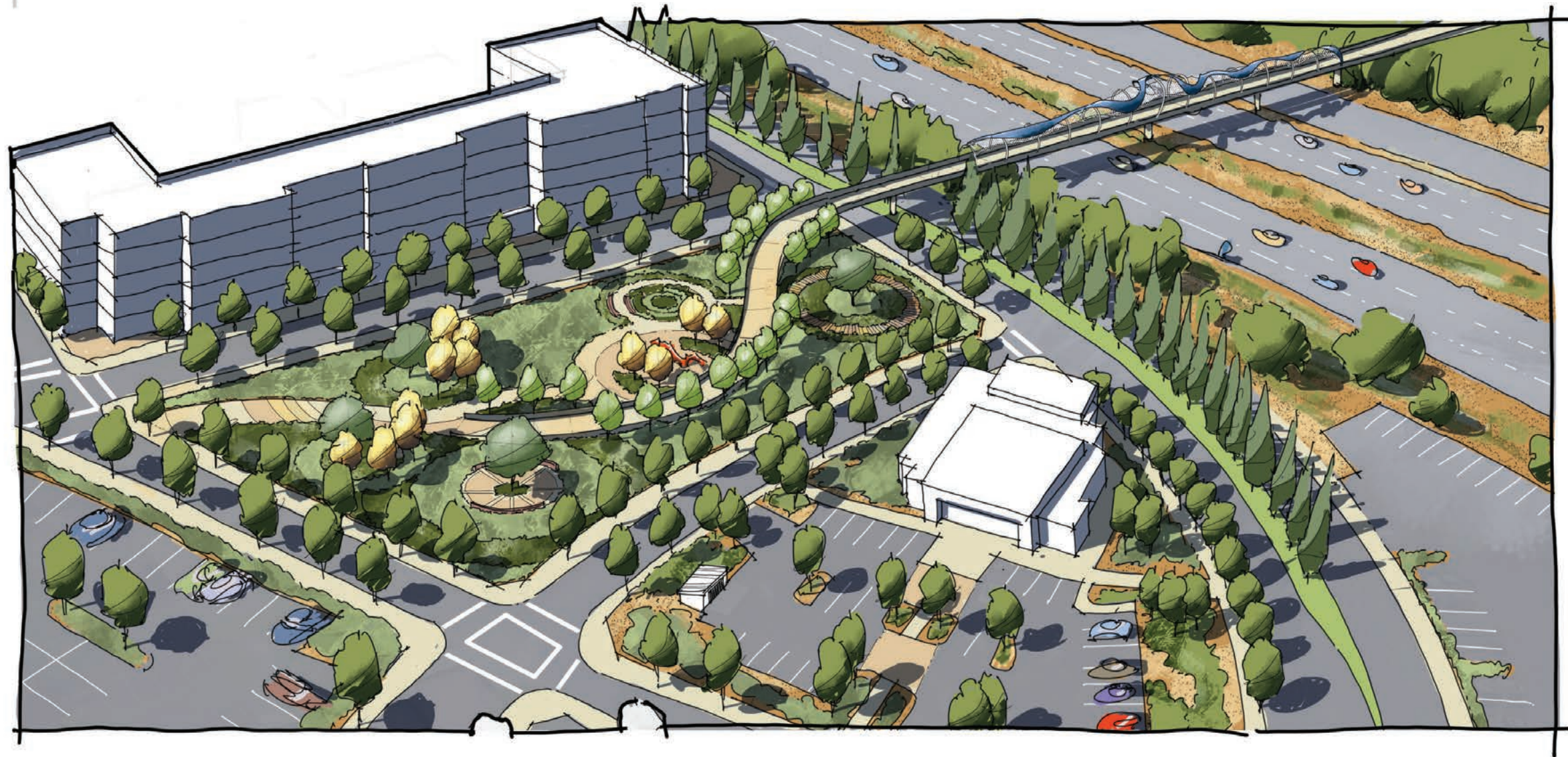
Planning Commission Meeting - July 8, 2020  
I-5 Pedestrian Bridge



**Drops and Ripples**  
East Ramp + Gateway Plaza

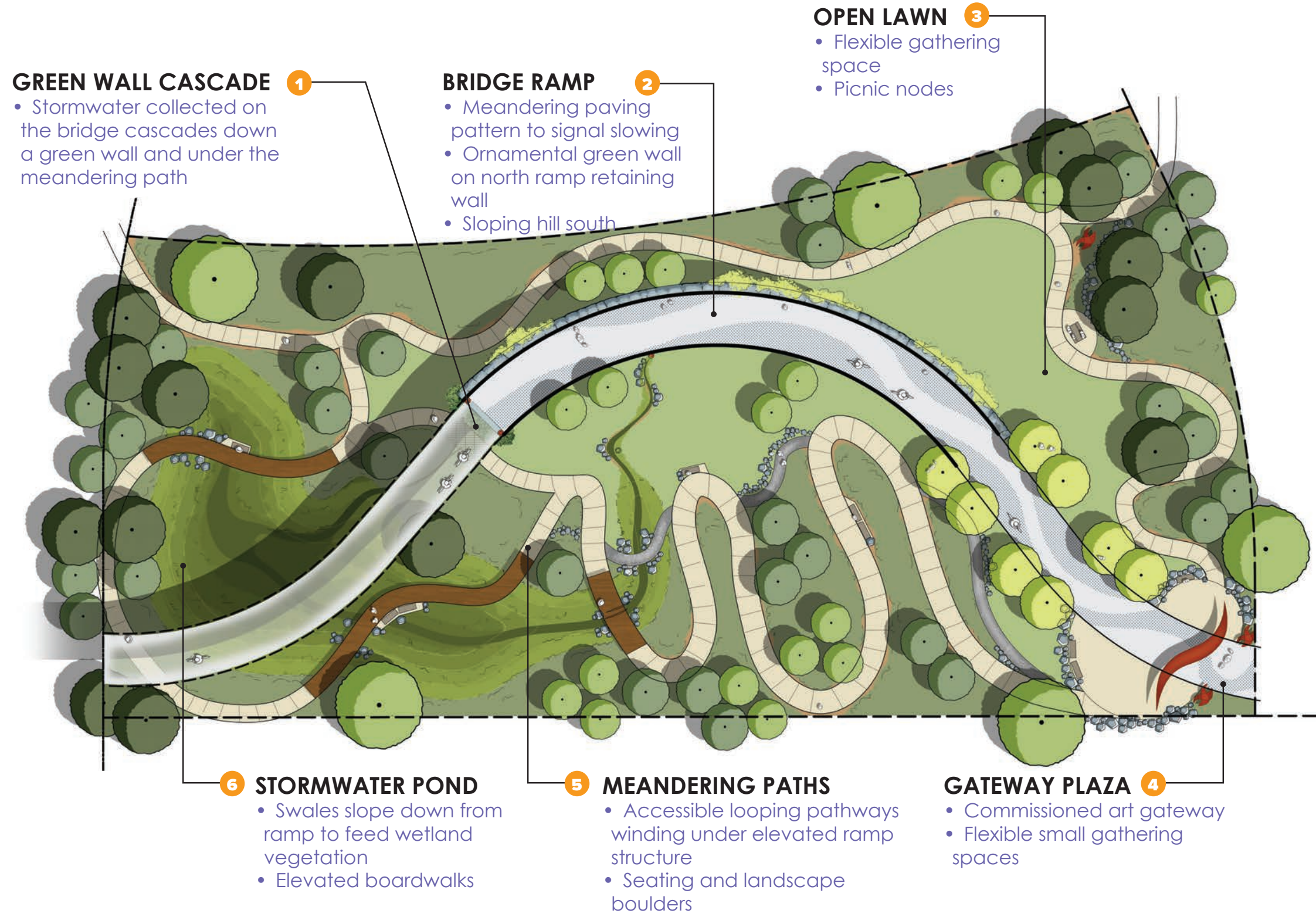
*shown with*

**Modern Artistic**  
Pedestrian Bridge





**PLAZA OPTION #2 RIVER OXBOW**



**GREEN WALL CASCADE 1**

- Stormwater collected on the bridge cascades down a green wall and under the meandering path

**BRIDGE RAMP 2**

- Meandering paving pattern to signal slowing
- Ornamental green wall on north ramp retaining wall
- Sloping hill south

**OPEN LAWN 3**

- Flexible gathering space
- Picnic nodes

**6 STORMWATER POND**

- Swales slope down from ramp to feed wetland vegetation
- Elevated boardwalks

**5 MEANDERING PATHS**

- Accessible looping pathways winding under elevated ramp structure
- Seating and landscape boulders

**GATEWAY PLAZA 4**

- Commissioned art gateway
- Flexible small gathering spaces

**LEGEND**

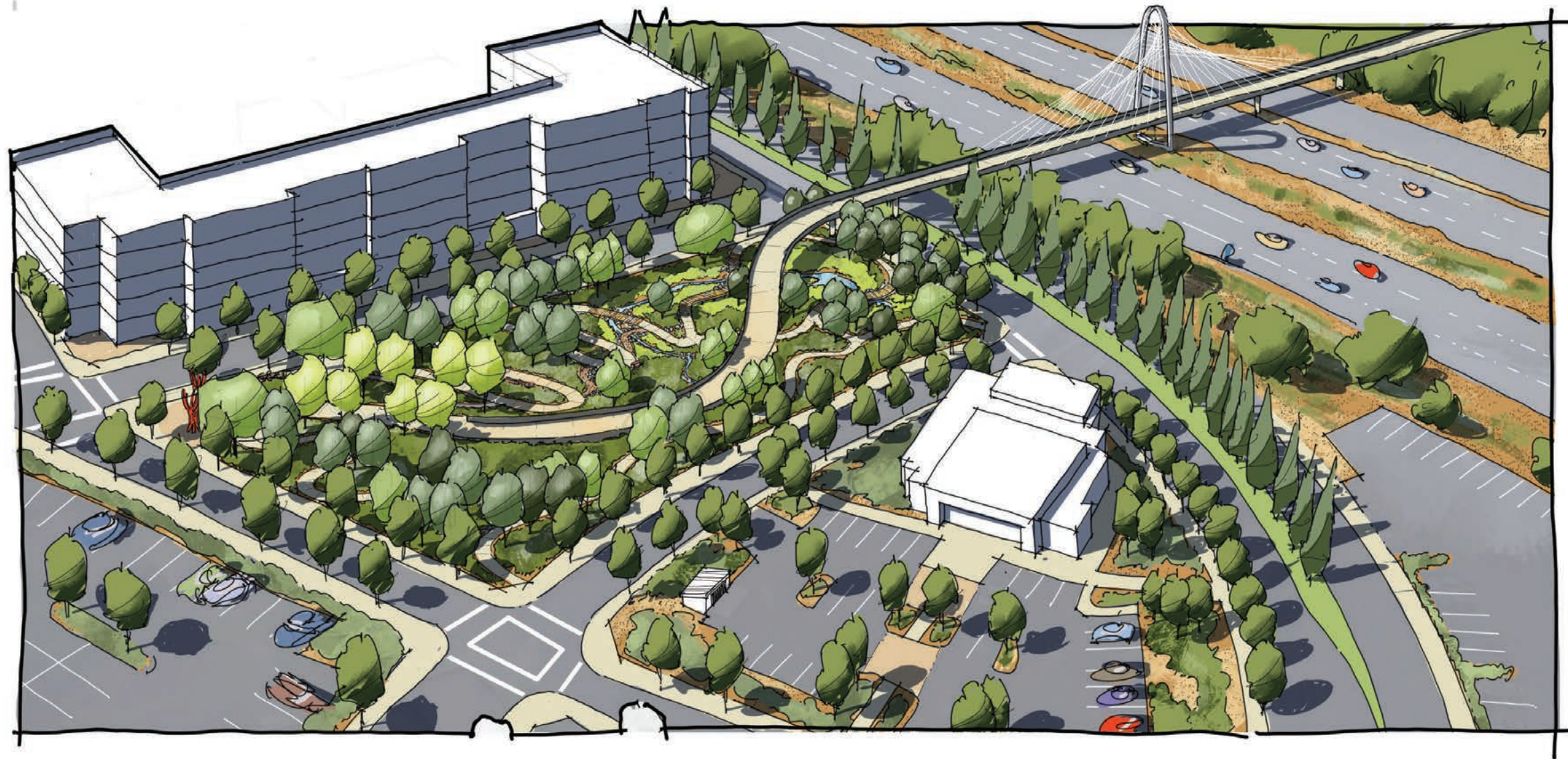
- Art (commissioned)
- Tree (new)
- Stormwater Planter
- Ornamental Planter
- Open Lawn
- Paved Pathway
- Boardwalk



**River Oxbow**  
East Ramp + Gateway Plaza

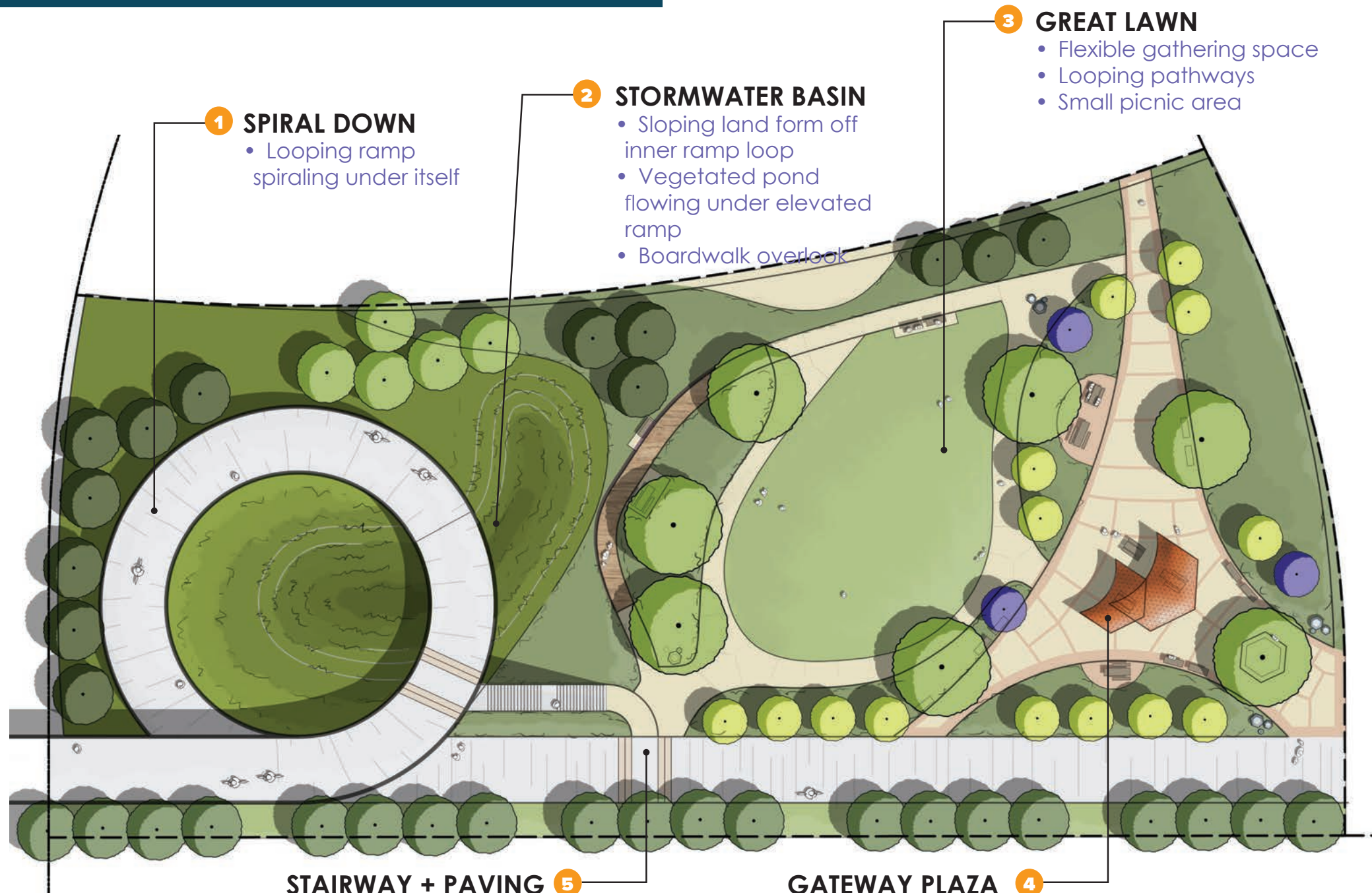
*shown with*

**Cable Stay**  
Pedestrian Bridge





**PLAZA OPTION #3 GATEWAY LOOP**



**1 SPIRAL DOWN**  
 • Looping ramp spiraling under itself

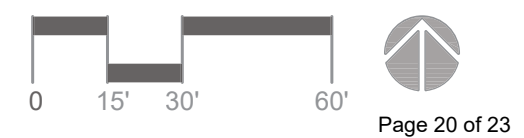
**2 STORMWATER BASIN**  
 • Sloping land form off inner ramp loop  
 • Vegetated pond flowing under elevated ramp  
 • Boardwalk overlook

**3 GREAT LAWN**  
 • Flexible gathering space  
 • Looping pathways  
 • Small picnic area

**STAIRWAY + PAVING 5**  
 • Alternate pedestrian route from ramp  
 • Paving patterns on main ramp pathway to slow and separate modes of travel

**GATEWAY PLAZA 4**  
 • Shade Structure  
 • Seating and picnic tables  
 • Separated from main ramp pathway  
 • Ornamental planting at edges

- LEGEND**
- ◆ Art (commissioned)
  - Tree (new)
  - Stormwater Planter
  - Ornamental Planter
  - Open Lawn
  - Paved Pathway
  - Boardwalk

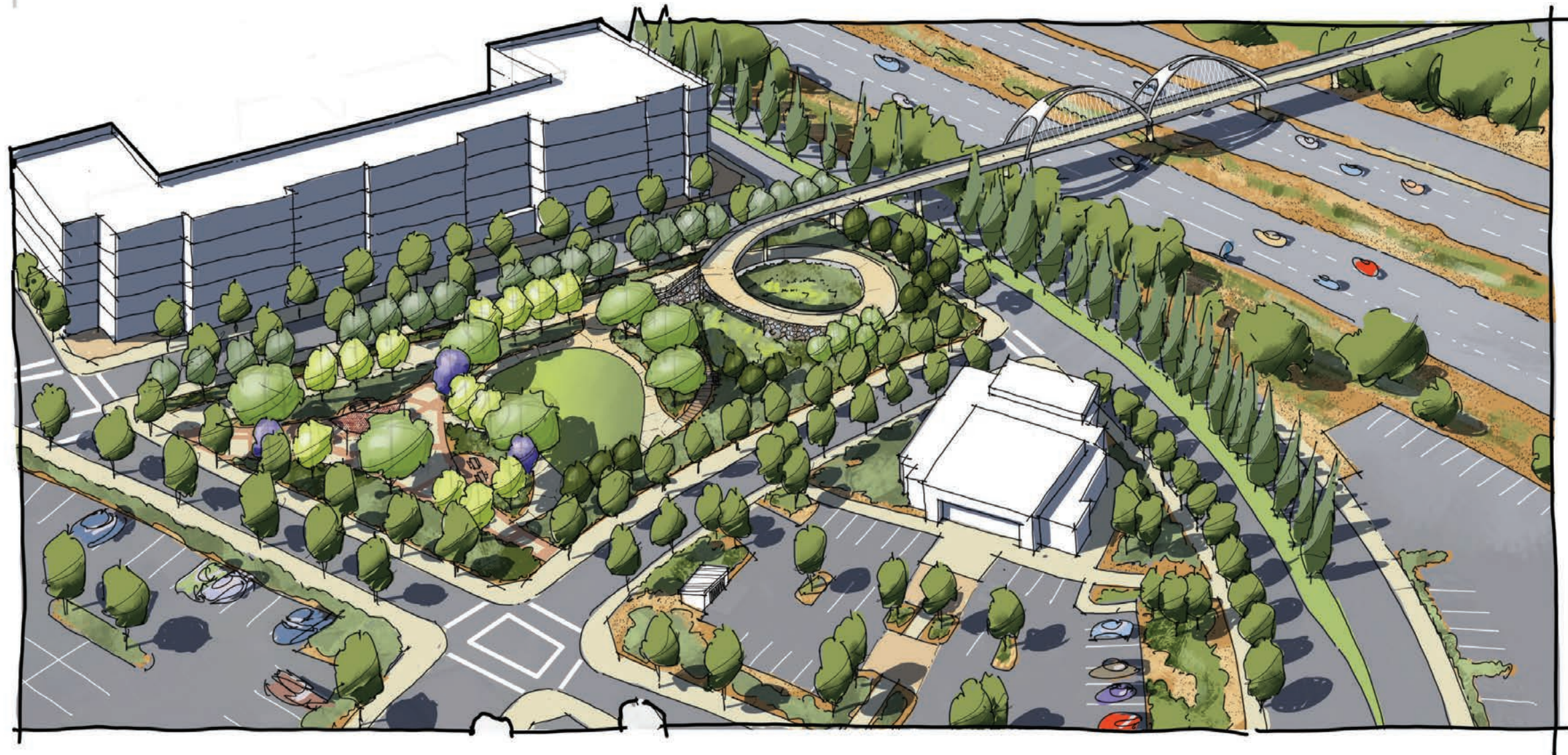




**Gateway Loop**  
East Ramp + Gateway Plaza

*shown with*

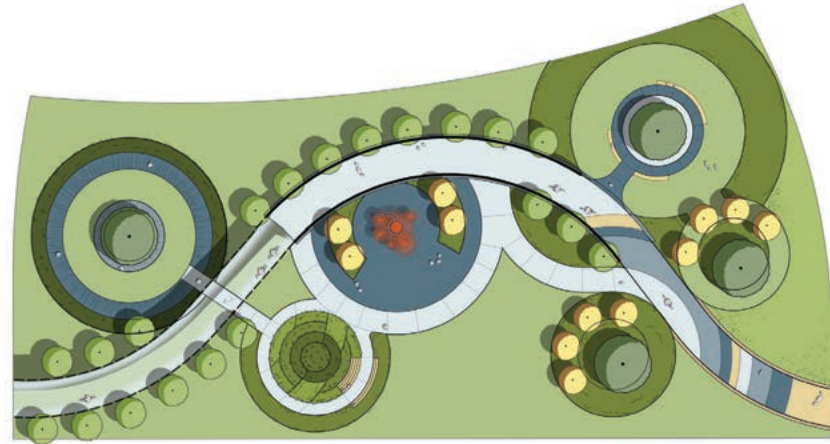
**Tied Arch**  
Pedestrian Bridge



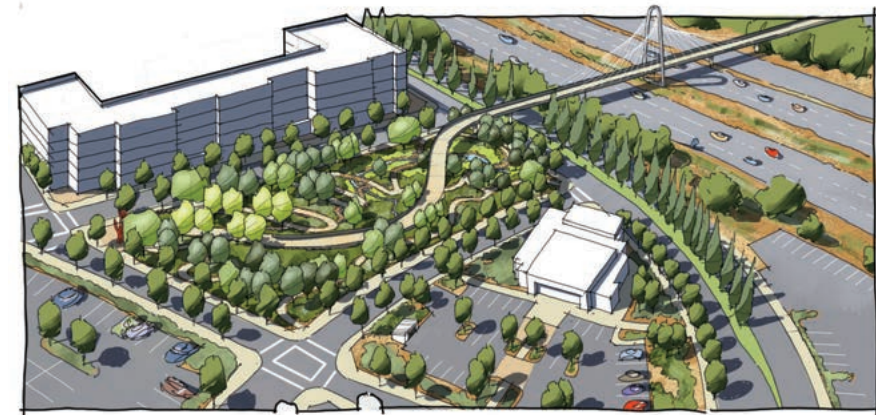
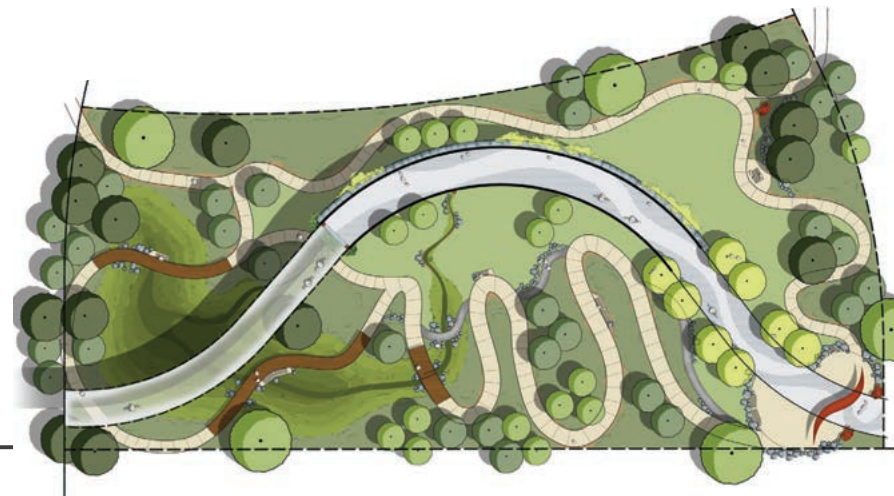


EAST RAMP + GATEWAY PLAZA DESIGN OPTIONS

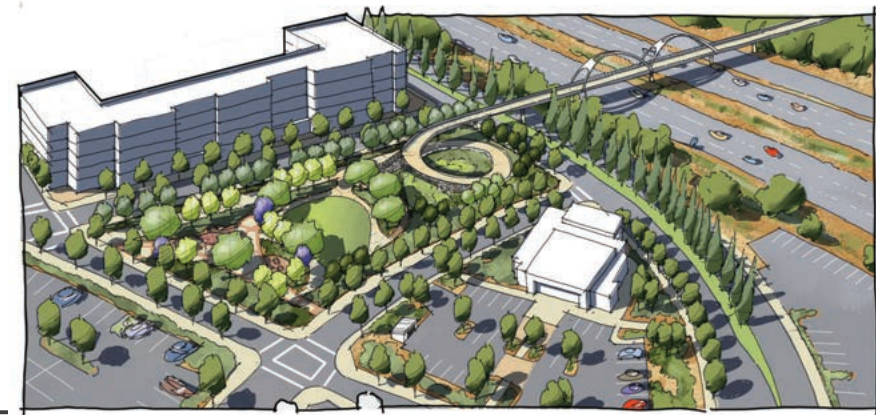
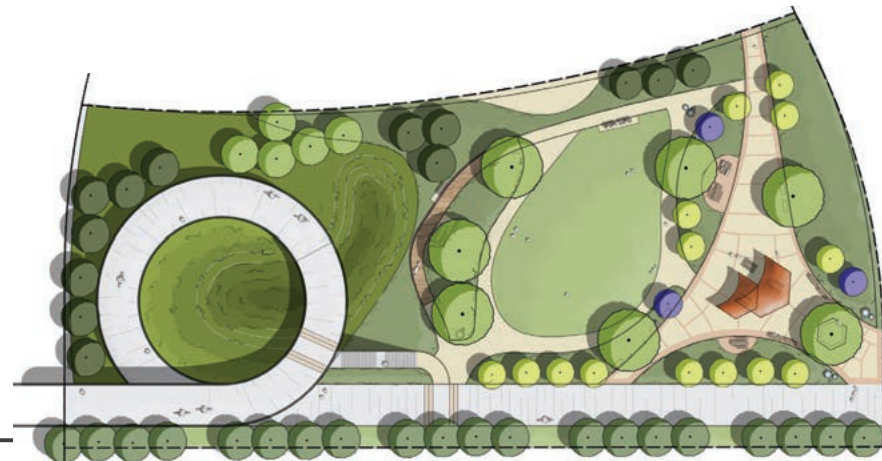
Drops and Ripples



River Oxbow



Gateway Loop







**As the team prepares three plaza concepts for public input, which design elements do you believe best meet the guiding design principles established through the Town Center Plan and recent public engagement, and what elements are missing that could better articulate these aspirations?**