

# Pedestrian-Bicycle- Emergency Access Bridge Feasibility Study



October 5, 2015



City of  
*Wilsonville*  
in Oregon





# Issue Before Council

Should one or more Willamette River bridge alignments east of the Interstate Bridge be added as an alternative to the upcoming French Prairie Bridge feasibility study?



# >> Project Update

March 2015

Final IGA with ODOT

April 2015

Request for Proposals

June 2015

Consultant Team Selected

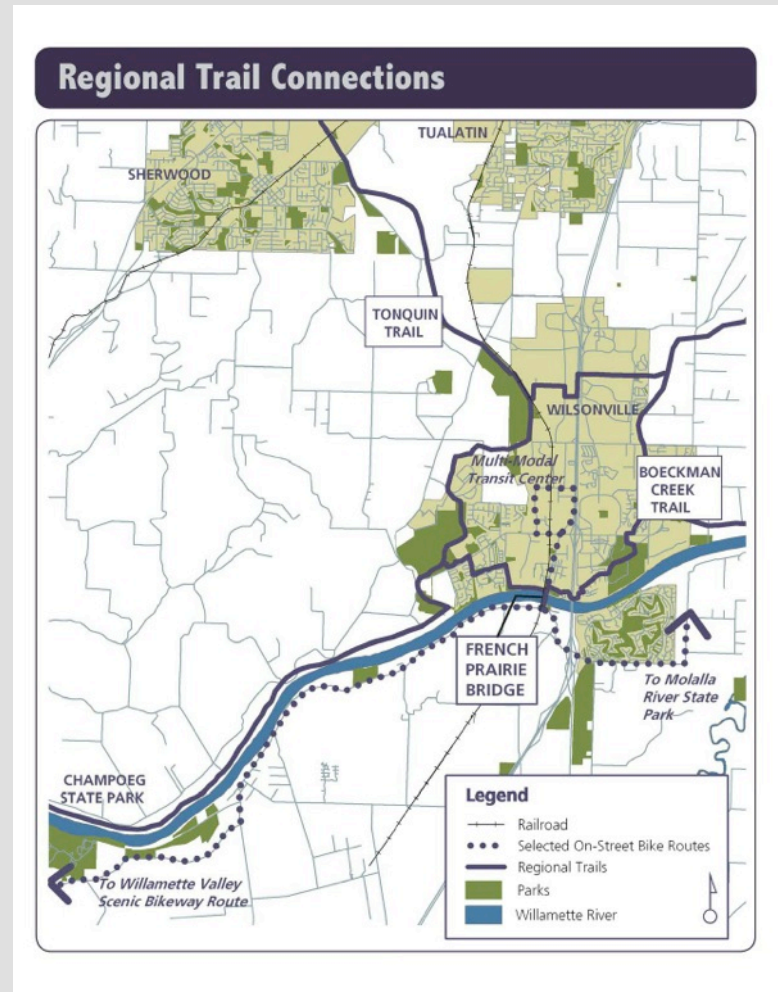
Current

Negotiate Contract & Fee



# >> Project Objectives

1. Regional Trail Connections
  - Connect Portland to Eugene
  - Ice Age Tonquin Trail
  - Willamette Valley Scenic Bikeway
  - Champoeg State Park
2. Emergency Vehicle Access
  - Interstate Bridge Impassible
3. Disabled & Elderly Access
  - Alternate Willamette River Crossing for Charbonneau & Areas South
  - Emergency & Recreation
  - SMART & WES Connections







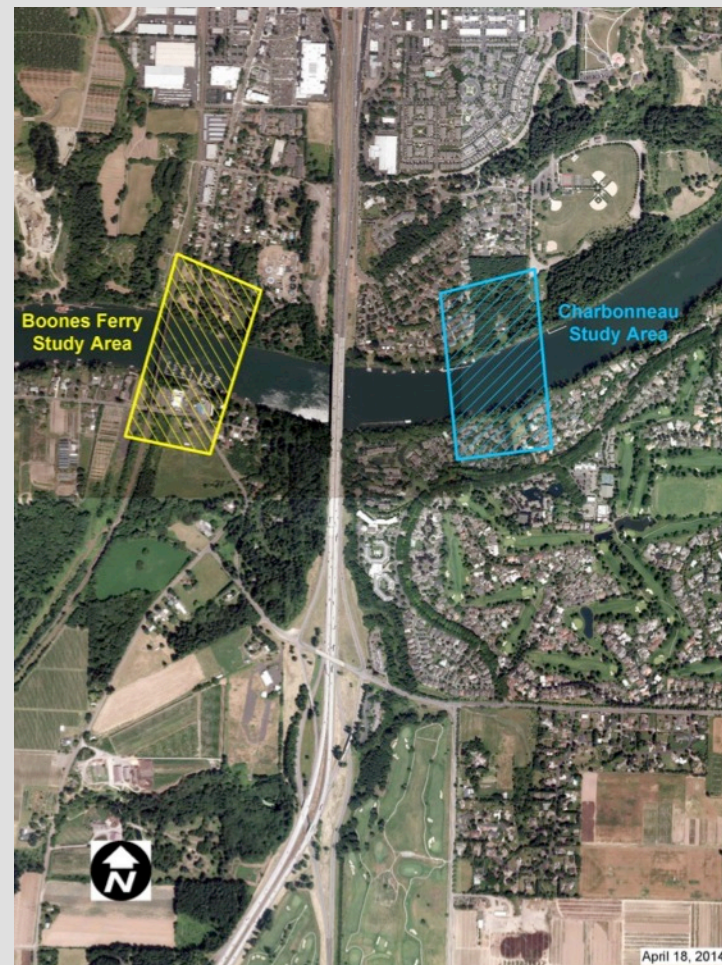
# Alternatives Analysis

## Study Areas

- Boones Ferry Road
- Charbonneau

## Project Objectives

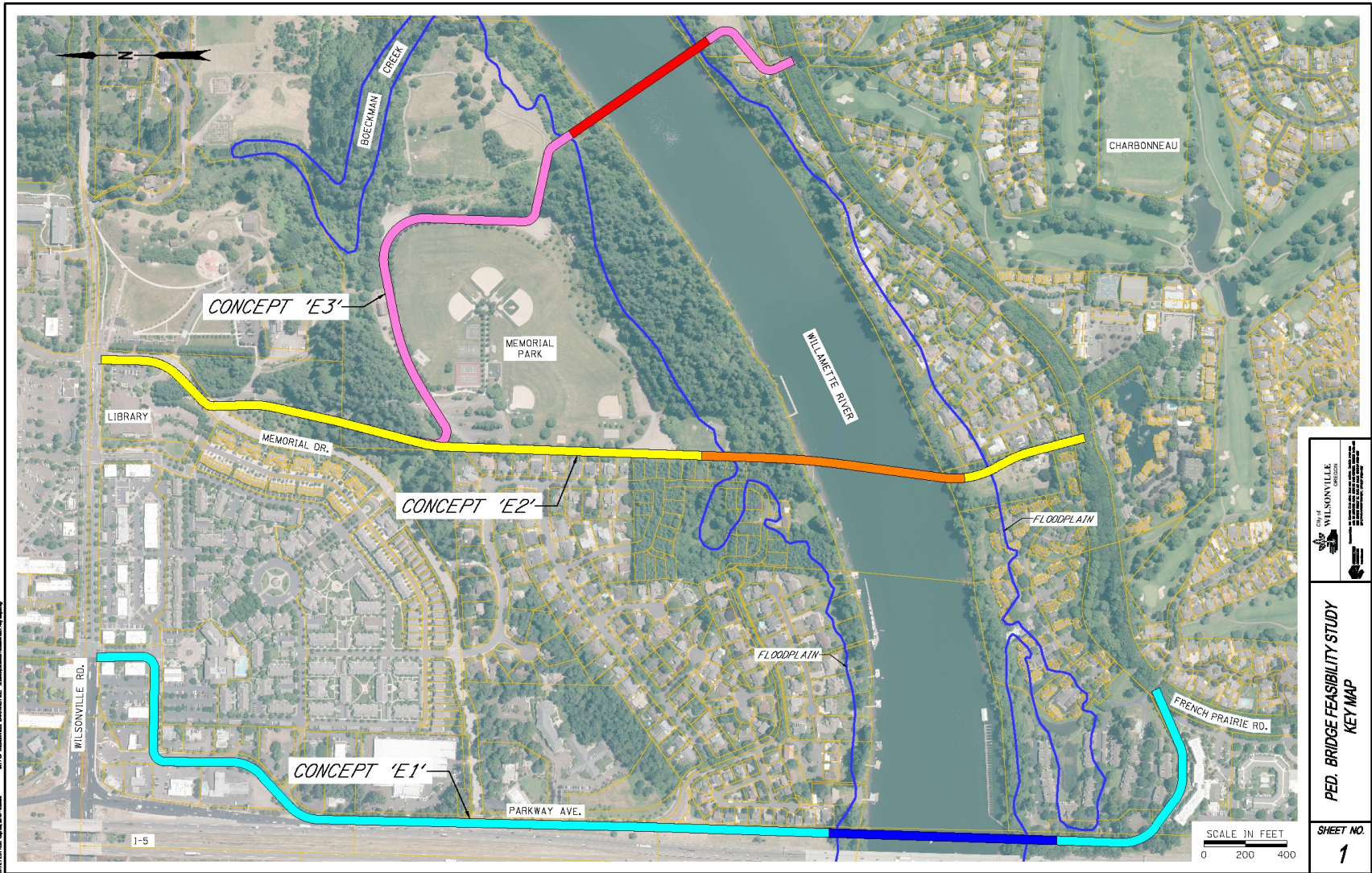
1. Regional Trail Connections
2. Emergency Vehicle Access
3. Disabled & Elderly Access
4. **Connect Charbonneau to City Amenities**
  - Memorial Park
  - Library / City Hall
  - Town Center Businesses







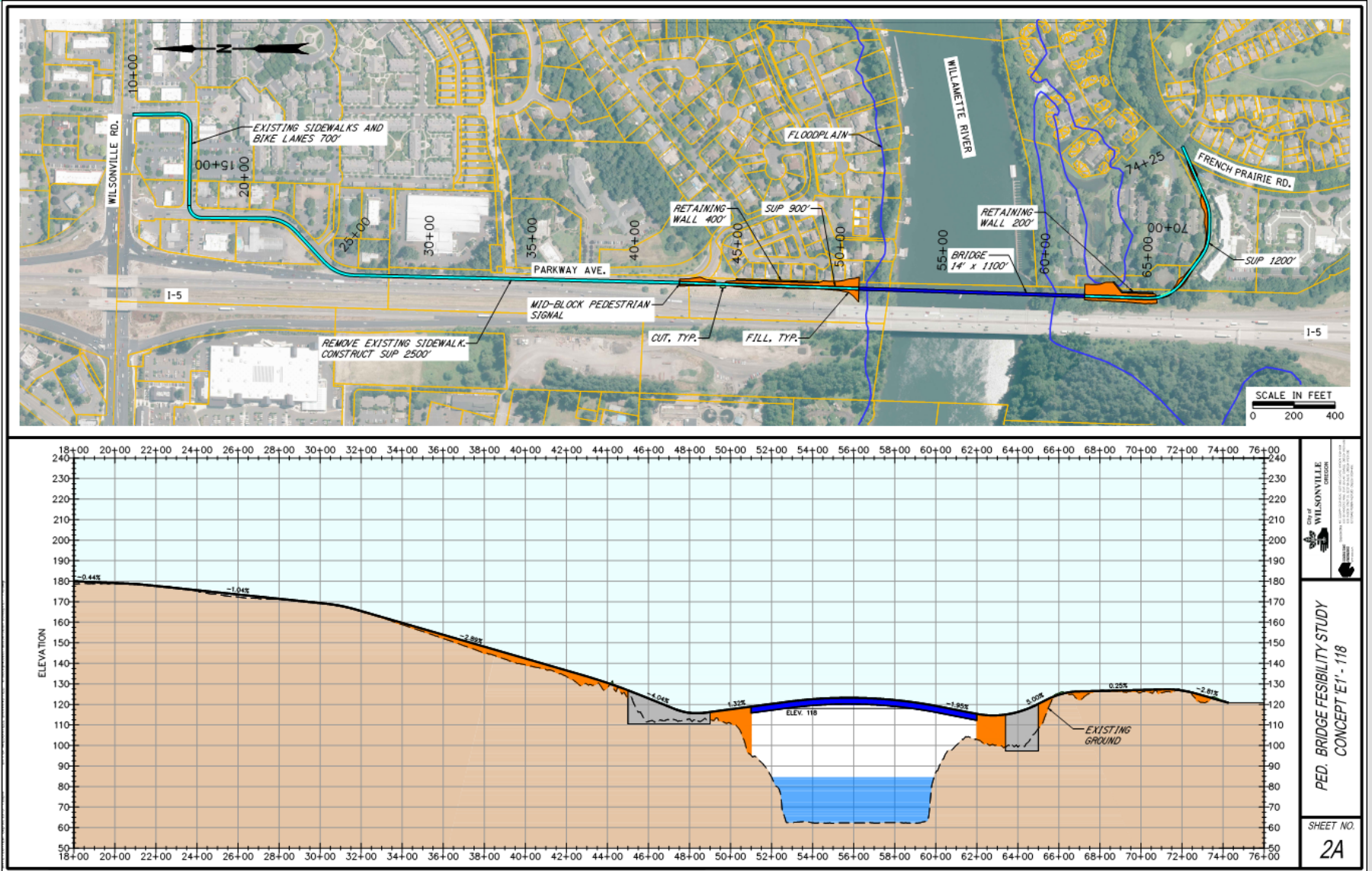
# Bridge Alignments East of I-5







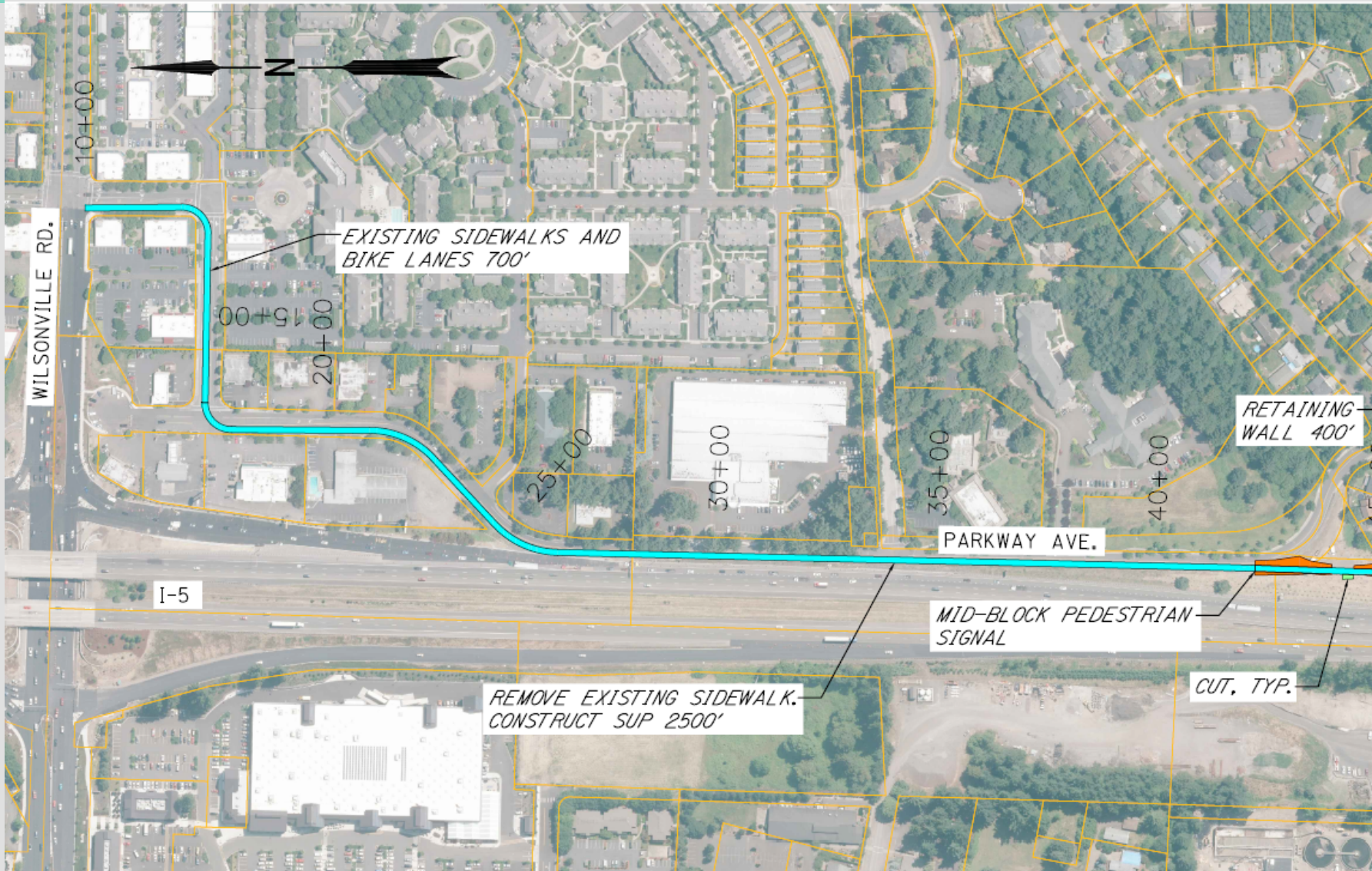
# E1 - Adjacent to I-5







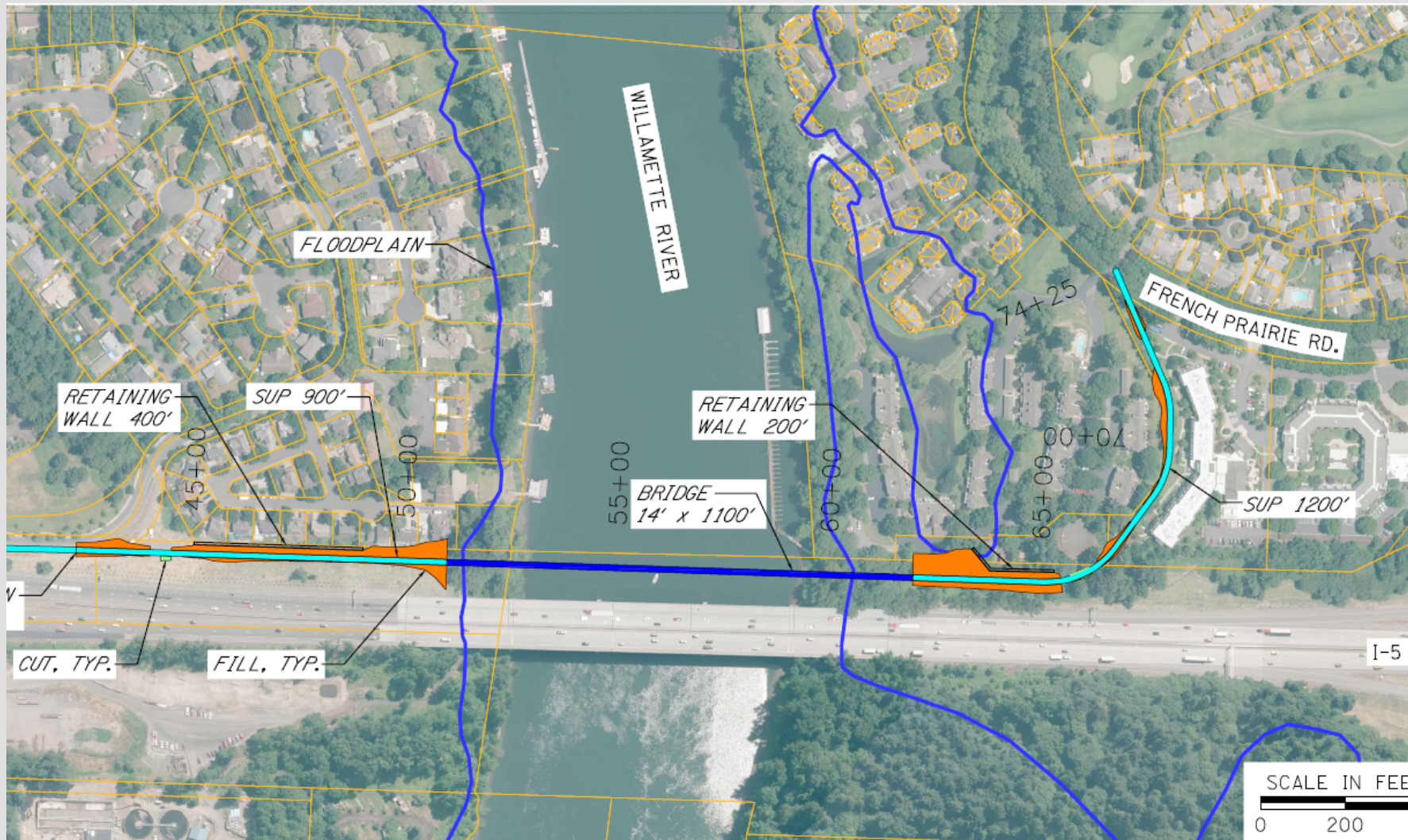
# E1 – Adjacent to I-5







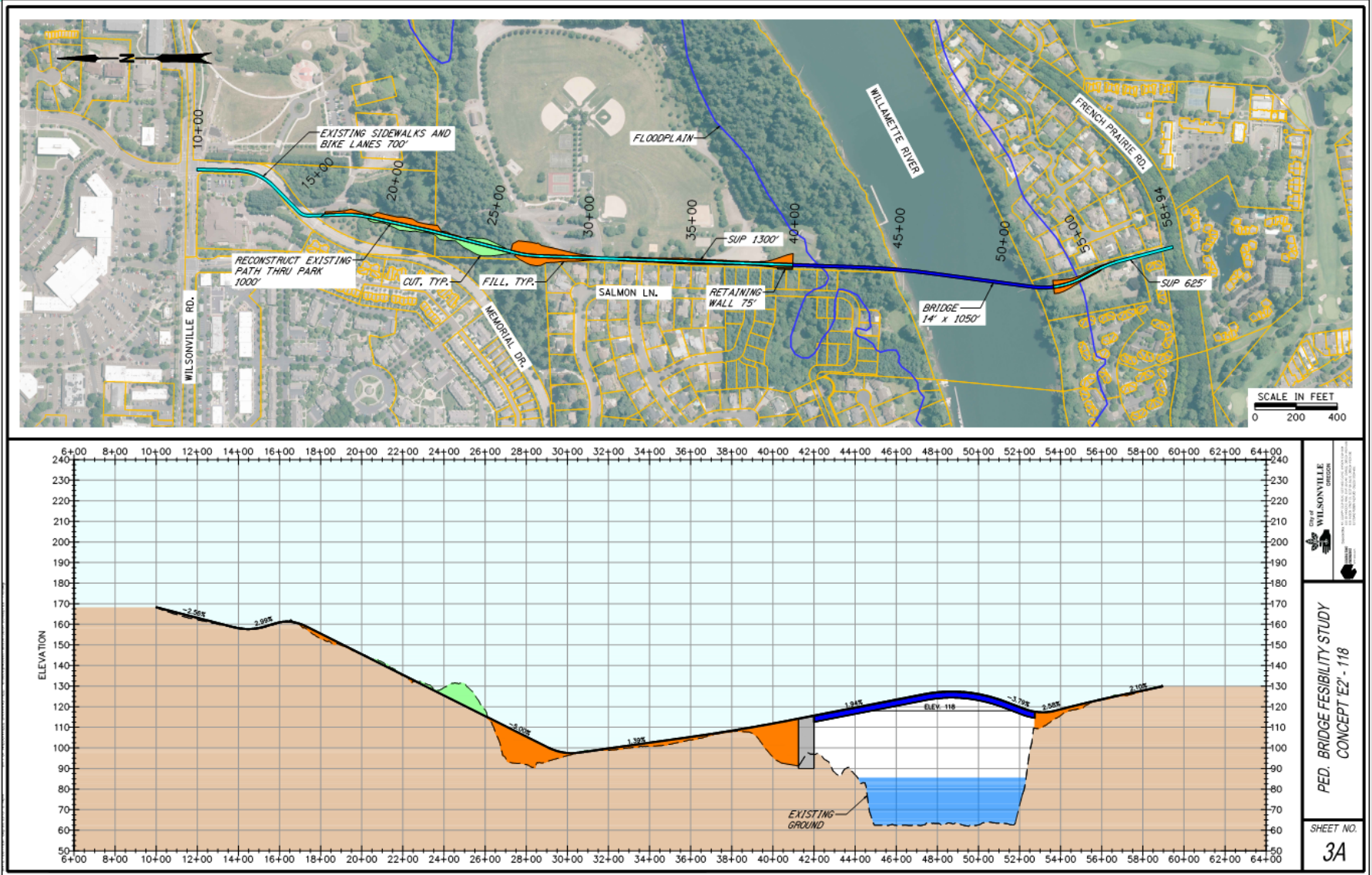
# E1 – Adjacent to I-5







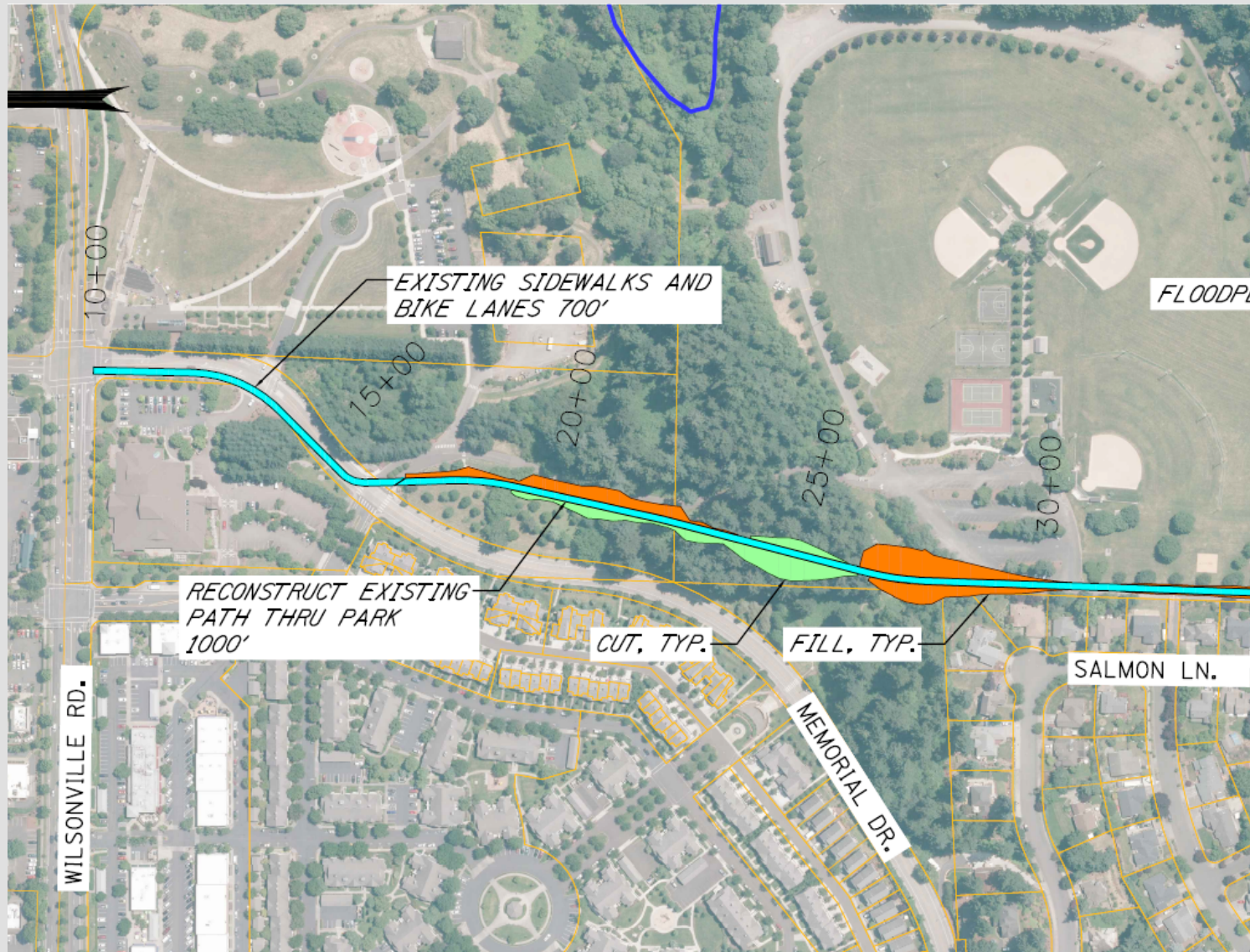
# E2 – West Edge of Memorial Park







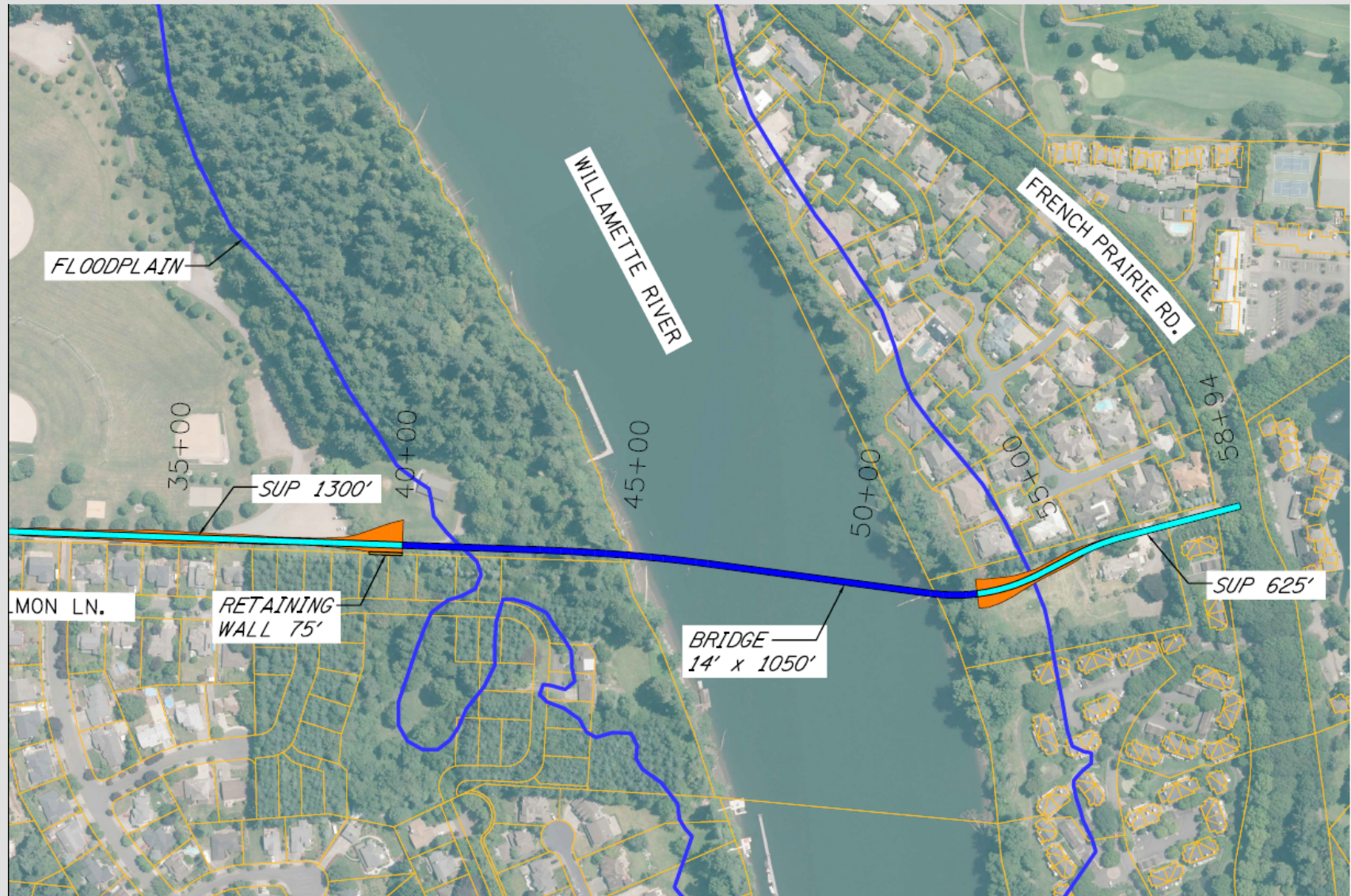
# E2 – West Edge of Memorial Park







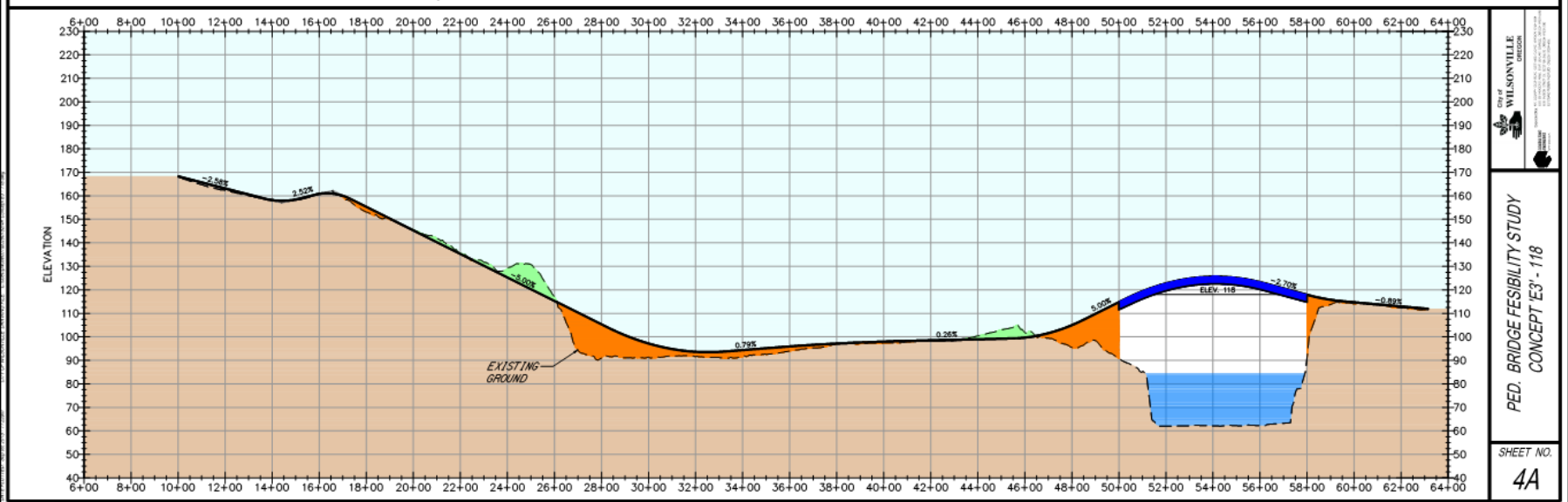
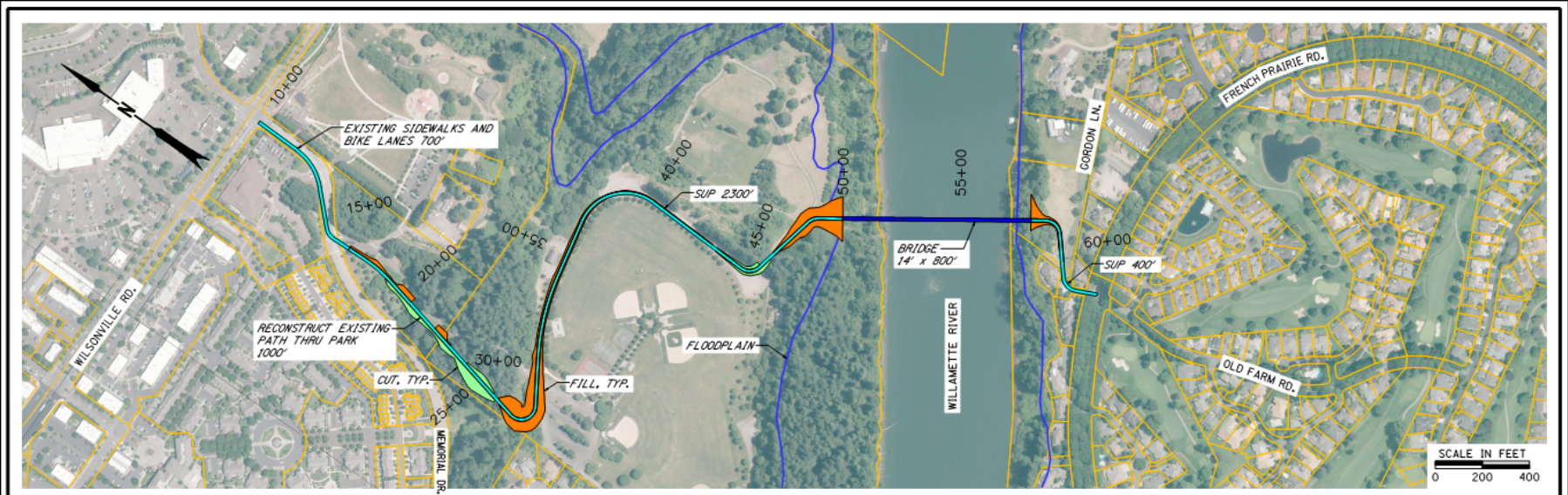
# E2 – West Edge of Memorial Park







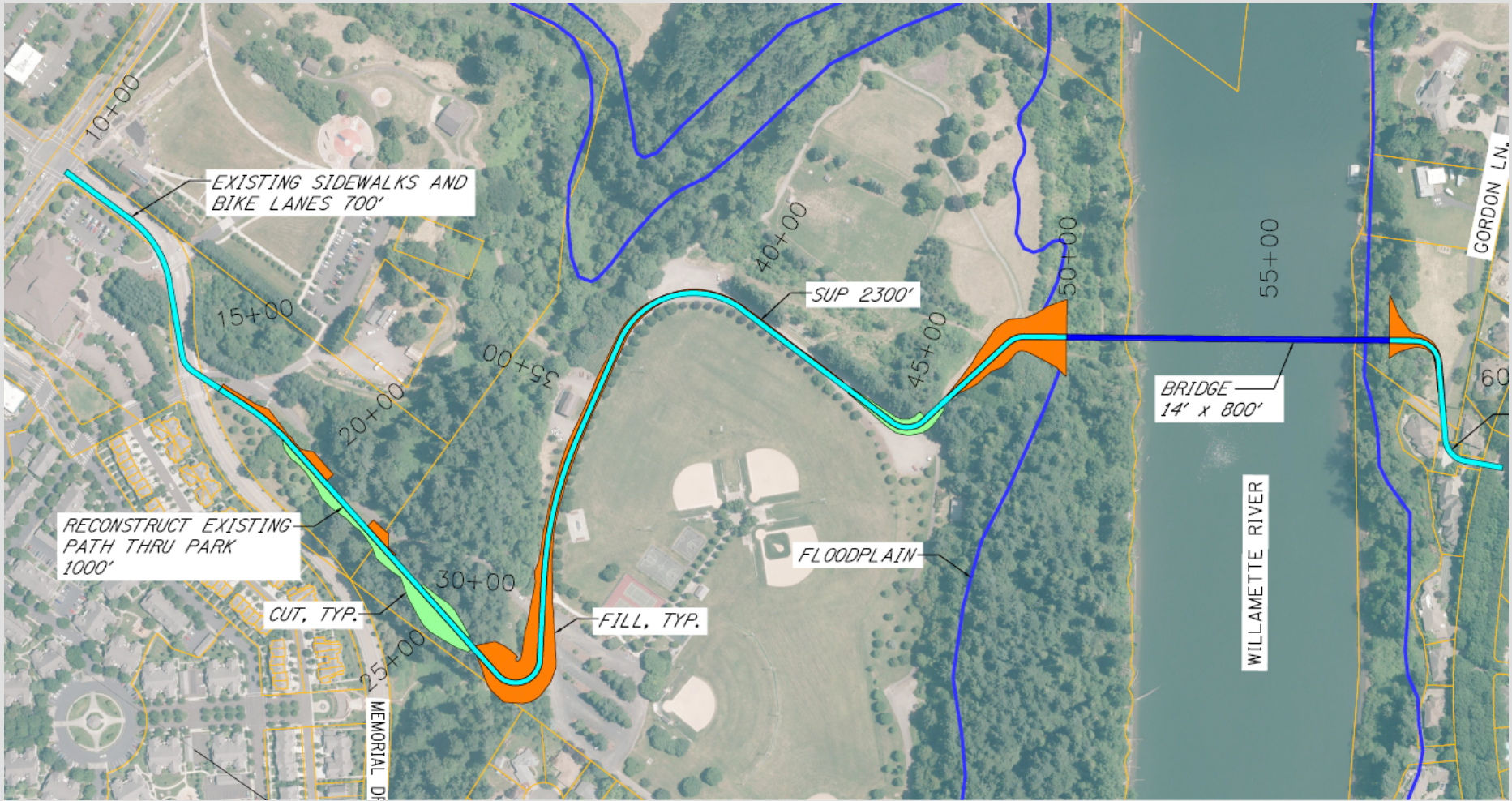
# E3 - East Edge of Memorial Park







# E3 – East Edge of Memorial Park



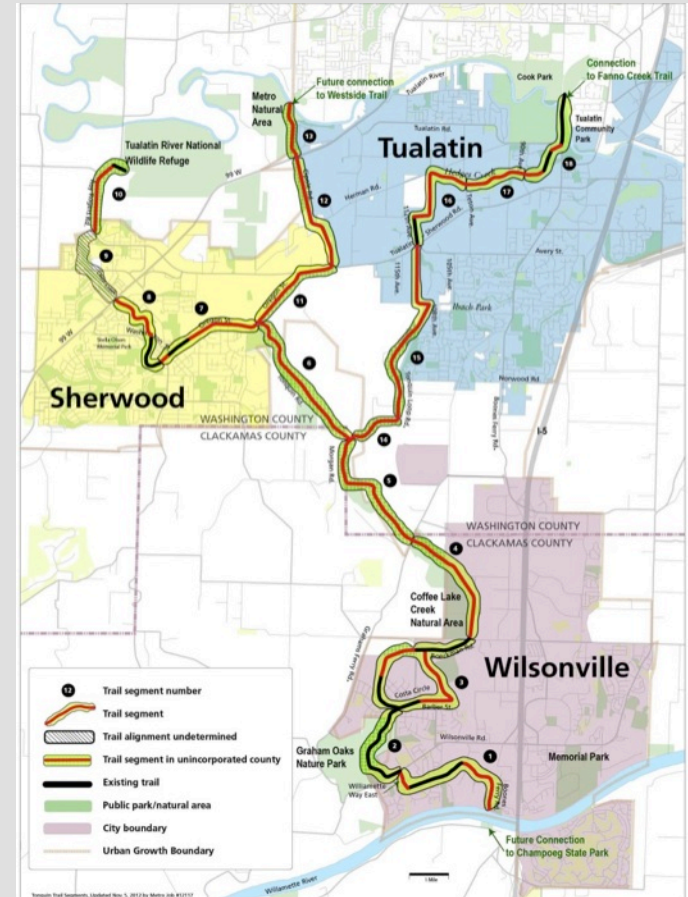




# East Side Bridge Alternative

## Concerns / Challenges

- Difficult to meet all four project objectives
- Provides more local benefits than regional
- More difficult to secure project partners
- Less likely to secure project funding





# Issue Before Council

Should one or more Willamette River bridge alignments east of the Interstate Bridge be added as an alternative to the upcoming French Prairie Bridge feasibility study?

## Options for Consideration

1. Include Boones Ferry Road Study Area only.
2. Add one or more Charbonneau Study Areas and perform alternatives analysis as part of project.









# Alignment Comparison

Concept	Opportunities	Challenges
<p>E1 Alignment <i>Adjacent to I-5</i></p>	<ul style="list-style-type: none"> <li>+ Flattest profile to cross the river</li> <li>+ Connection to Wilsonville Rd is straight forward</li> <li>+ North connection under I-5 is nearby</li> <li>+ Closest to the regional west side trail connection</li> </ul>	<ul style="list-style-type: none"> <li>- Most retaining walls &amp; longest bridge (highest cost)</li> <li>- Being near I-5 and deck below Boones Bridge provides below average user experience</li> <li>- Connection to existing I-5 undercrossing regional trail is not direct with on-street route through neighborhood</li> <li>- Path &amp; walls near a neighborhood &amp; in the I-5 fill slope</li> <li>- No direct Charbonneau connection to Memorial Park, farther from Library, City Hall, Town Center, etc.</li> <li>- Lack of supporting pedestrian and bike facilities on French Prairie Road</li> <li>- Lack of supporting bike facilities on Parkway Avenue</li> <li>- Gaps in pedestrian facilities on Parkway Avenue- Mid-block pedestrian crossing would be required</li> <li>- Portions of the bridge and path are in ODOT ROW</li> <li>- Limited opportunity for adjacent park space or supplemental uses for “place making.” Limited to strictly a bridge use</li> <li>- Connection to French Prairie impacts private parking area</li> <li>- Emergency response routed through Charbonneau</li> </ul>
<p>E2 Alignment <i>West edge of Memorial Park</i></p>	<ul style="list-style-type: none"> <li>+ Direct connection between retail centers</li> <li>+ Short connection to French Prairie Road</li> <li>+ Above average user experience with park connection</li> <li>+ Central Charbonneau connection to Memorial Park, Library, City Hall, Town Center, etc. close by</li> </ul>	<ul style="list-style-type: none"> <li>- Some functional impacts to Memorial Park</li> <li>- Adjacent to and above the Renaissance Boat Club homes, privacy concerns</li> <li>- Steep path up to Wilsonville Road</li> <li>- Significant impact to forested hillside in Memorial Park for ADA path up to Wilsonville Road</li> <li>- Connection to French Prairie Road is near a day care</li> <li>- Lack of supporting pedestrian and bike facilities on French Prairie Drive</li> <li>- Connection to existing I-5 undercrossing regional trail is farther away and is not direct with on-street route through neighborhood</li> <li>- Most acreage of right-of-way to make south connection</li> <li>- Emergency response routed through Charbonneau</li> </ul>





# Alignment Comparison

Concept	Opportunities	Challenges
<p>E3 Alignment <i>East edge of Memorial Park</i></p>	<ul style="list-style-type: none"> <li>+ Shortest bridge (probably least cost)</li> <li>+ Short, flat connection to French Prairie Road</li> <li>+ Above average user experience with park connection</li> <li>+ Avoids direct or adjacent impacts to neighborhoods</li> <li>+ Direct Charbonneau connection to Memorial Park, Library, City Hall, Town Center etc. close by</li> </ul>	<ul style="list-style-type: none"> <li>- Greatest functional impacts to Memorial Park</li> <li>- Possible grade separation bridge in Memorial Park</li> <li>- Steep bridge approach in Memorial Park</li> <li>- Greatest distance from existing I-5 undercrossing regional trail to which connection is not direct through park and with on-street route through neighborhood.</li> <li>- Outside City limits south of the river</li> <li>- Steep path up to Wilsonville Road</li> <li>- Significant impact to forested hillside in Memorial Park for ADA path up to Wilsonville Road</li> <li>- Lack of supporting pedestrian and bike facilities on French Prairie Drive</li> <li>- Likely impacts to property with large homes for south connection</li> <li>- Emergency response routed through Charbonneau</li> </ul>

