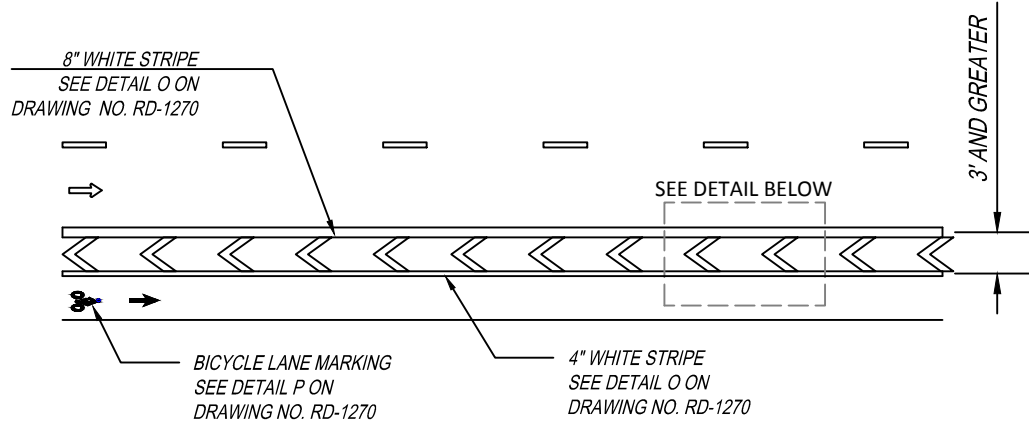
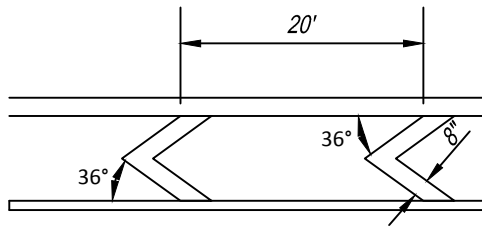


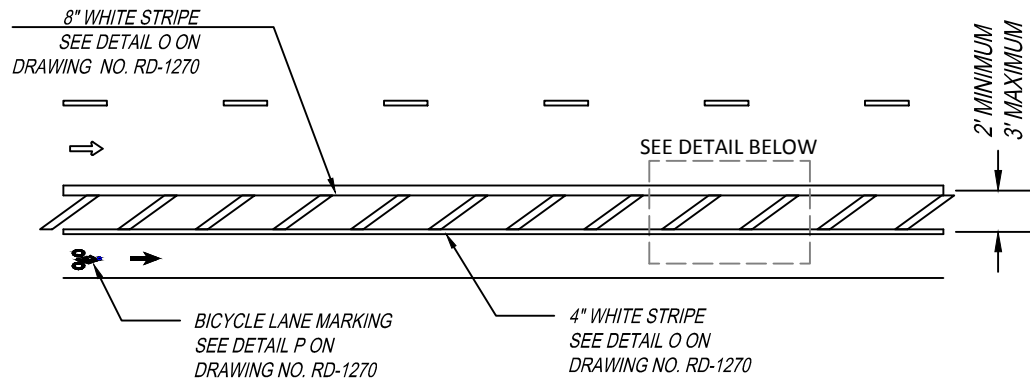
This Detail Drawing may not be altered or changed in any manner except by the City Engineer. It is the responsibility of the user to acquire the most current version.



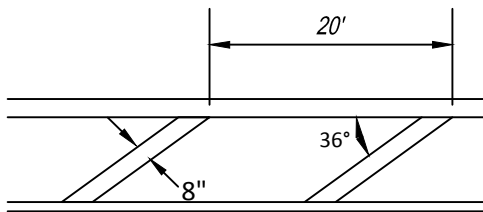
**PAVEMENT MARKING FOR WIDE BUFFERED BIKE LANE**



**DETAIL OF CHEVRON BARS- BUFFER SPACE**



**PAVEMENT MARKING FOR STANDARD BUFFERED BIKE LANE**



**DETAIL OF BARS- BUFFER SPACE**

**LEGEND**  
 DIRECTION OF TRAVEL

**NOTES TO DESIGNER:**

1. THIS DETAIL IS APPLICABLE ONLY WHEN BUFFER AREA IS LOCATED BETWEEN BIKE LANE AND VEHICLE TRAVEL LANE.
2. SPACING OF CHEVRON MARKINGS MAY BE INCREASED FOR HIGHER SPEEDS.
3. DO NOT USE TRANSVERSE BARS IN THE BUFFER AREA.

**Buffer Bike Lane Striping**

DRAWING NUMBER: RD-1290

DRAWN BY: SR

SCALE: N.T.S.

FILE NAME: RD-1290.DWG

APPROVED BY: NK

DATE: 1/20/15

**CITY OF  
WILSONVILLE**



**PUBLIC WORKS STANDARDS**