

Wilsonville Pedestrian Bridge + Plaza

# EAST RAMP + PLAZA DESIGN ALTERNATIVES

# RAMP + PLAZA ESSENTIALS

All east ramp + plaza designs incorporate the following elements:

## PUBLIC INPUT TO DATE

### EAST GATEWAY + PLAZA DESIGN ELEMENTS

- Sustainable Features
- Extensive Tree Canopy
- Social Seating
- Cyclist Amenities
- Shade/Rain Shelter
- Extensive Planting

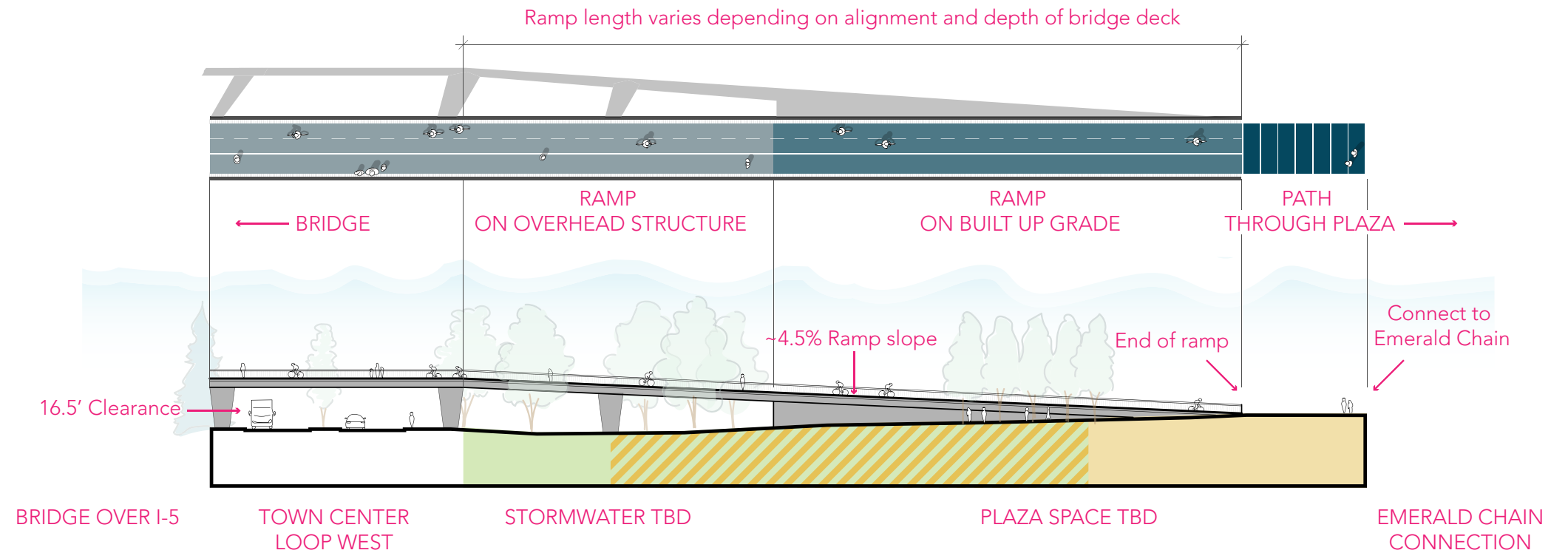
### PRIORITIZING ELEMENTS

1. Bridge and plaza should **integrate nature and sustainable design.**
2. Bridge connections should **support future development.**
3. Plaza should provide **places to stop and rest.**
4. Plaza should **incorporate art.**
5. Bridge as **iconic structure that evokes Wilsonville.**

### THEMES THAT RESONATE

1. Harmony with Nature
2. Family Friendly
3. Willamette River/Boones Ferry
4. Inclusive and Welcoming
5. Active and Mobile

## EAST GATEWAY RAMP + PLAZA BASIC STRUCTURE



# RAMP + PLAZA ESSENTIALS

## SUSTAINABLE FEATURES



## EXTENSIVE TREE CANOPY



## SOCIAL SEATING



## CYCLIST AMENITIES



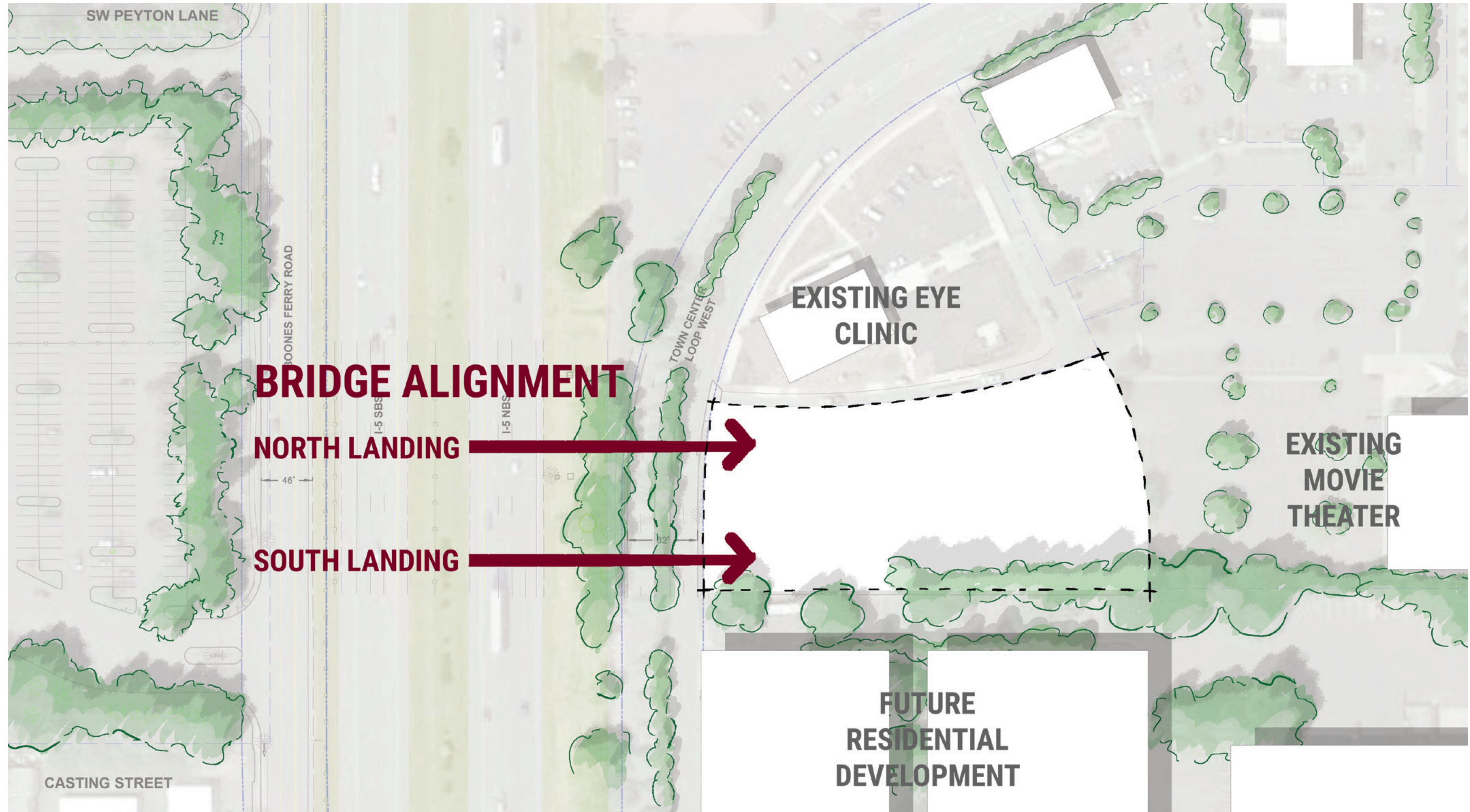
## SHADE/RAIN SHELTER



## EXTENSIVE PLANTING



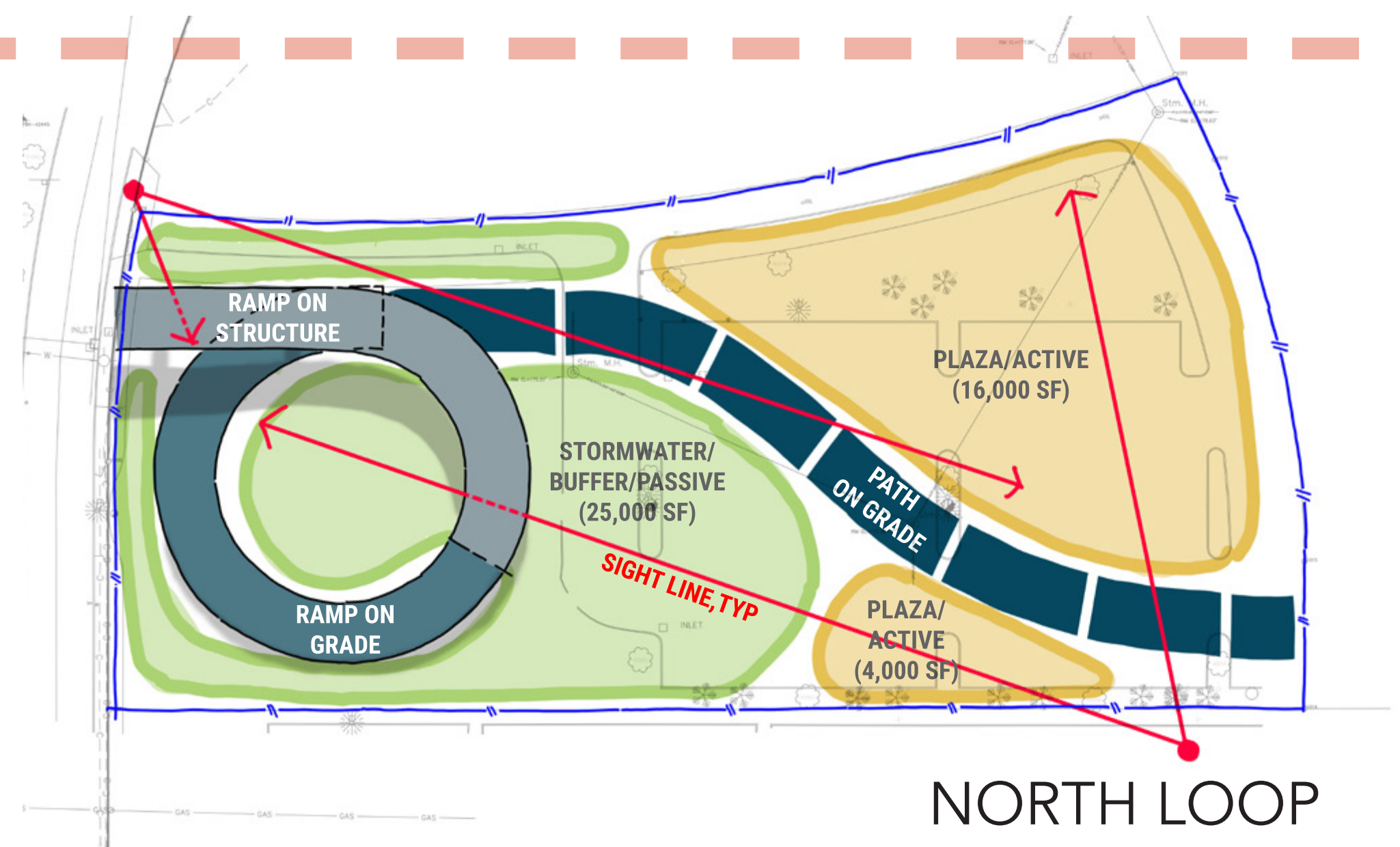
# BRIDGE ALIGNMENTS



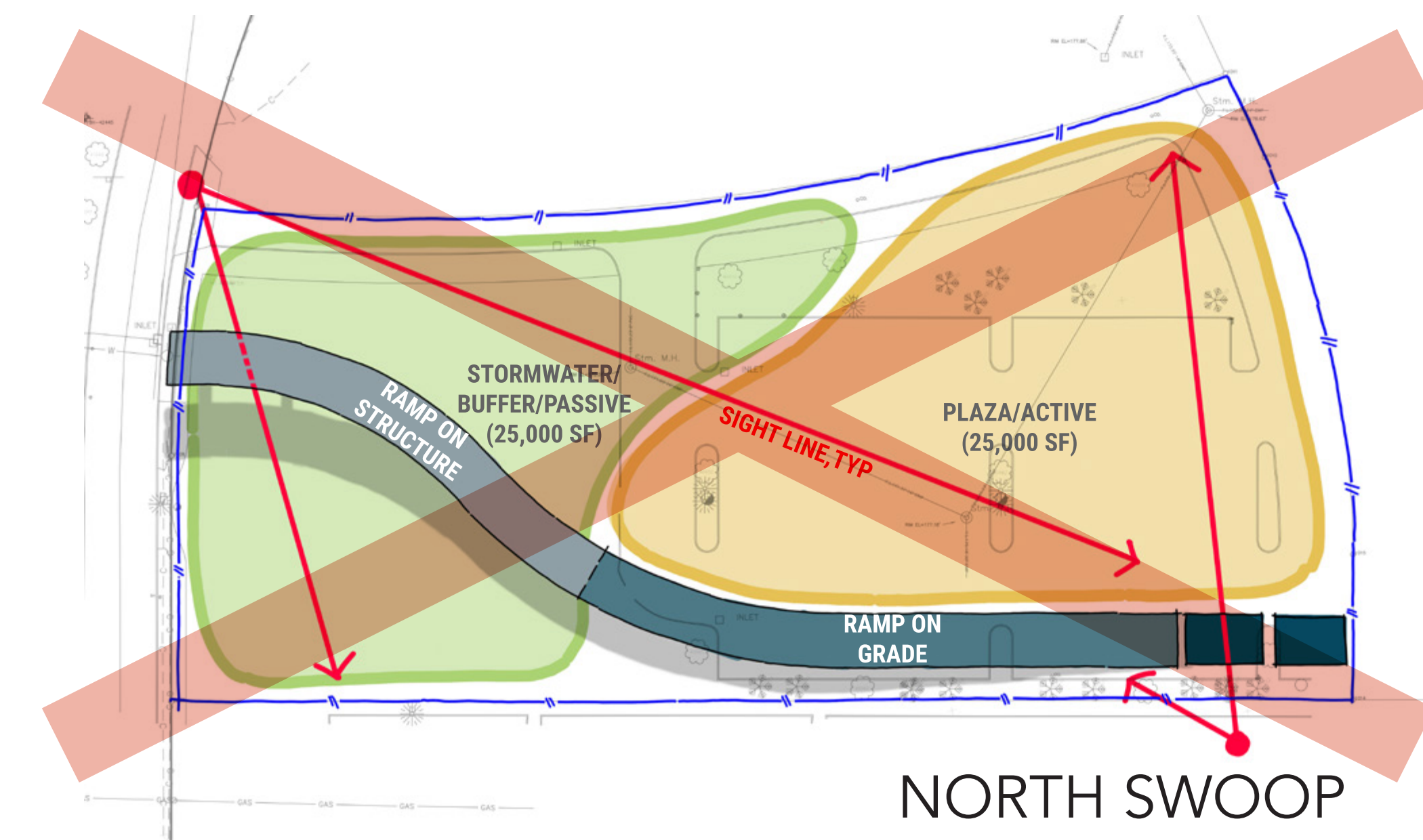
# PLAZA LOCATIONS



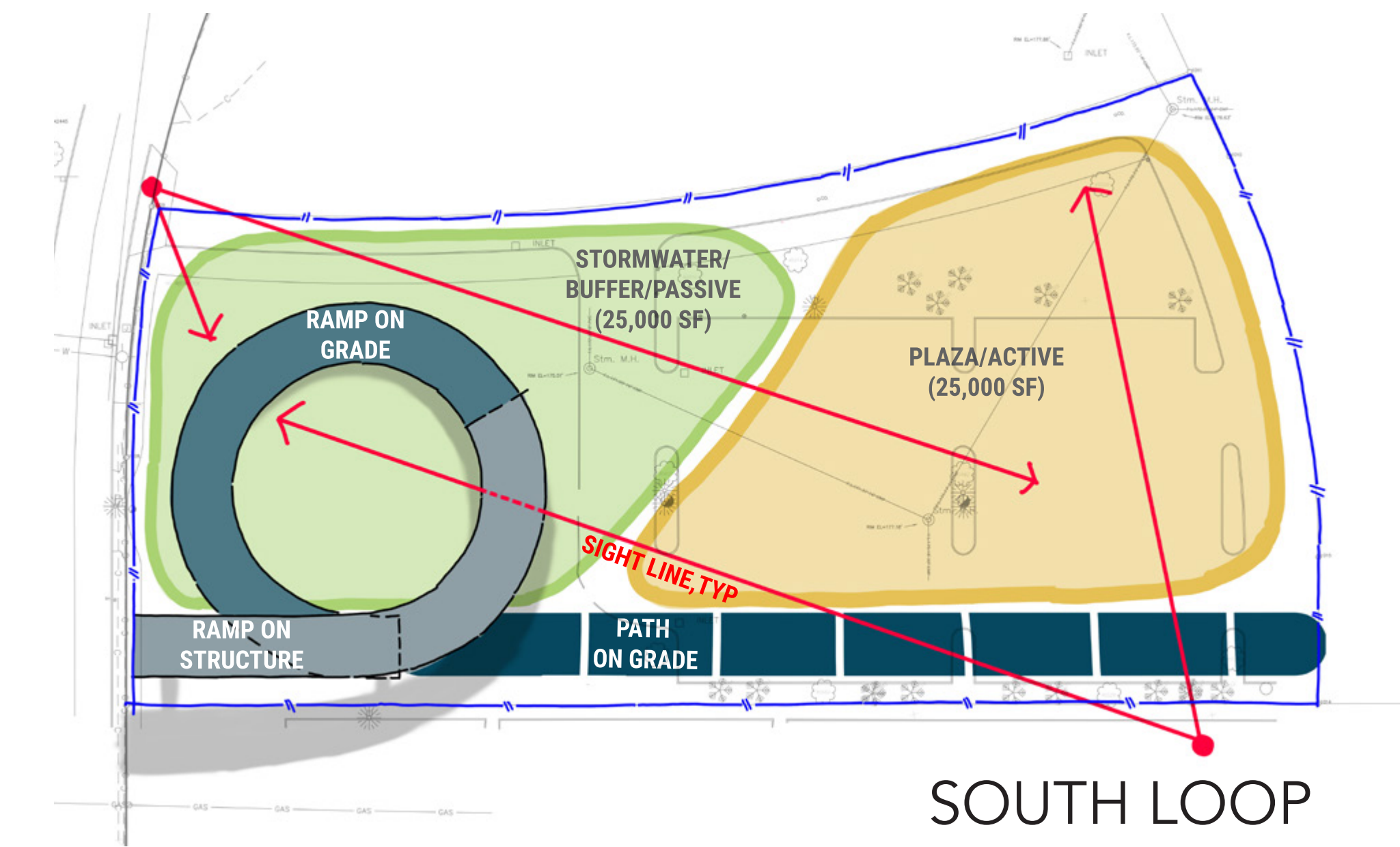
# EAST RAMP / PLAZA CONFIGURATIONS



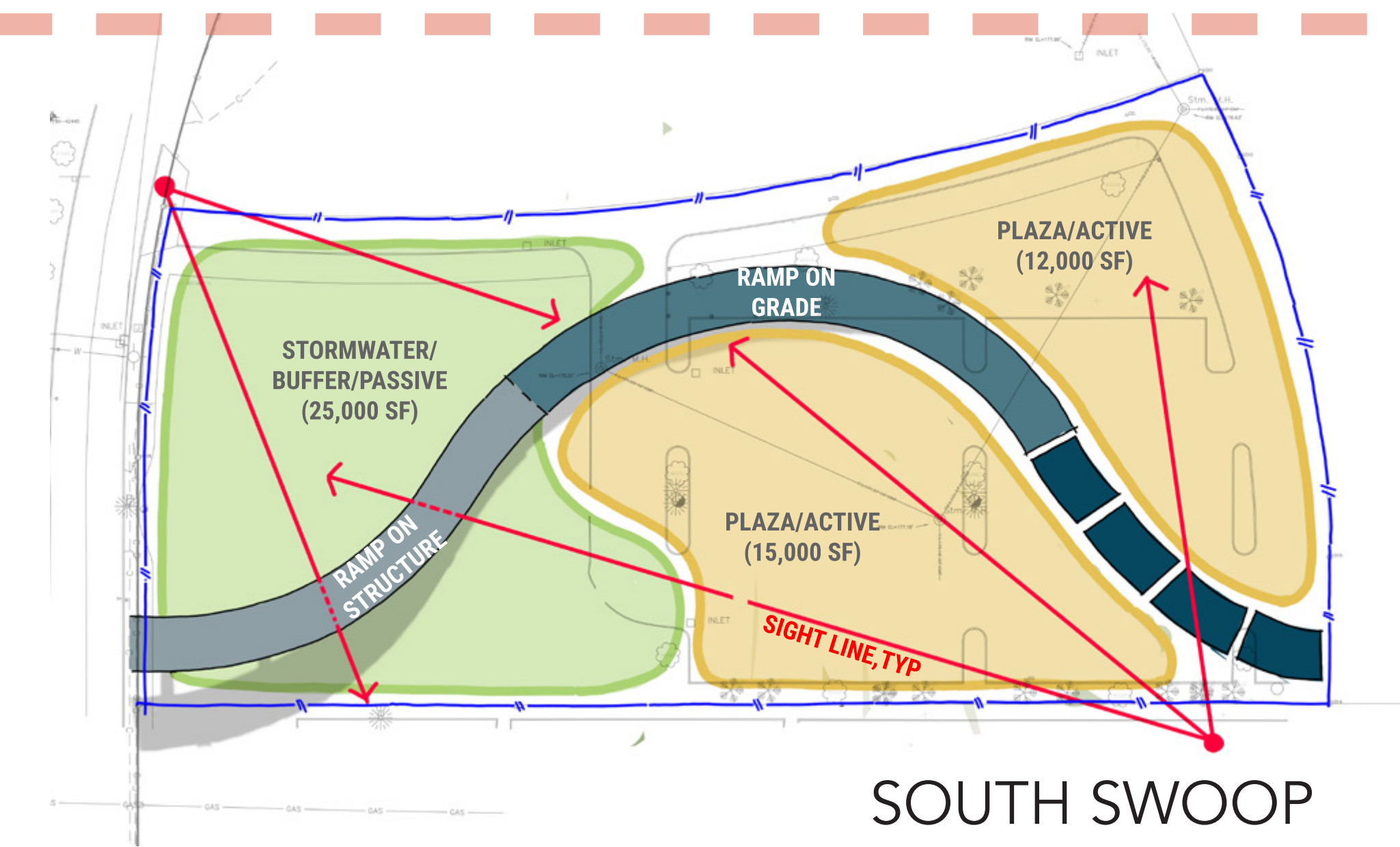
NORTH LOOP



NORTH SWOOP

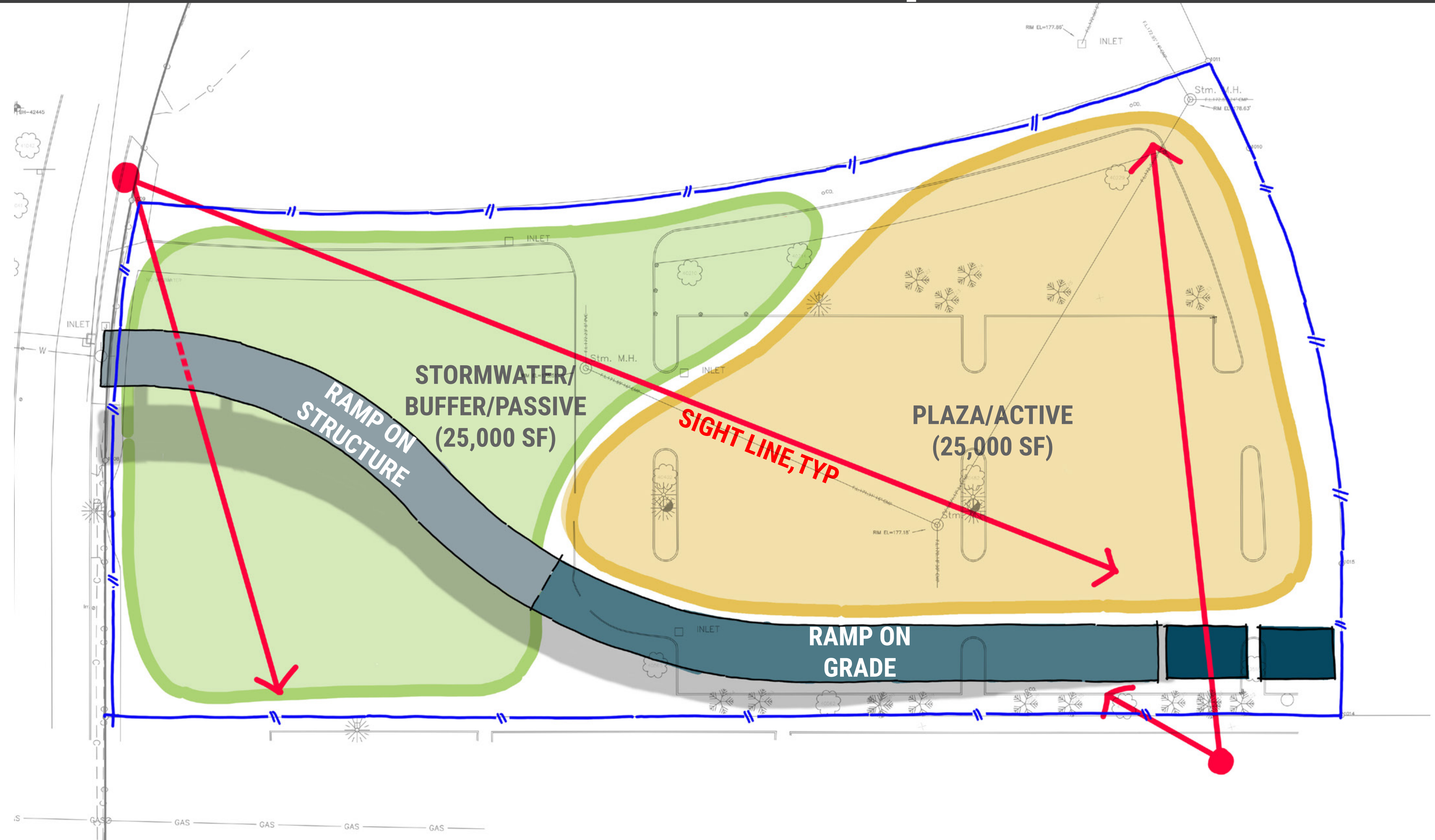


SOUTH LOOP

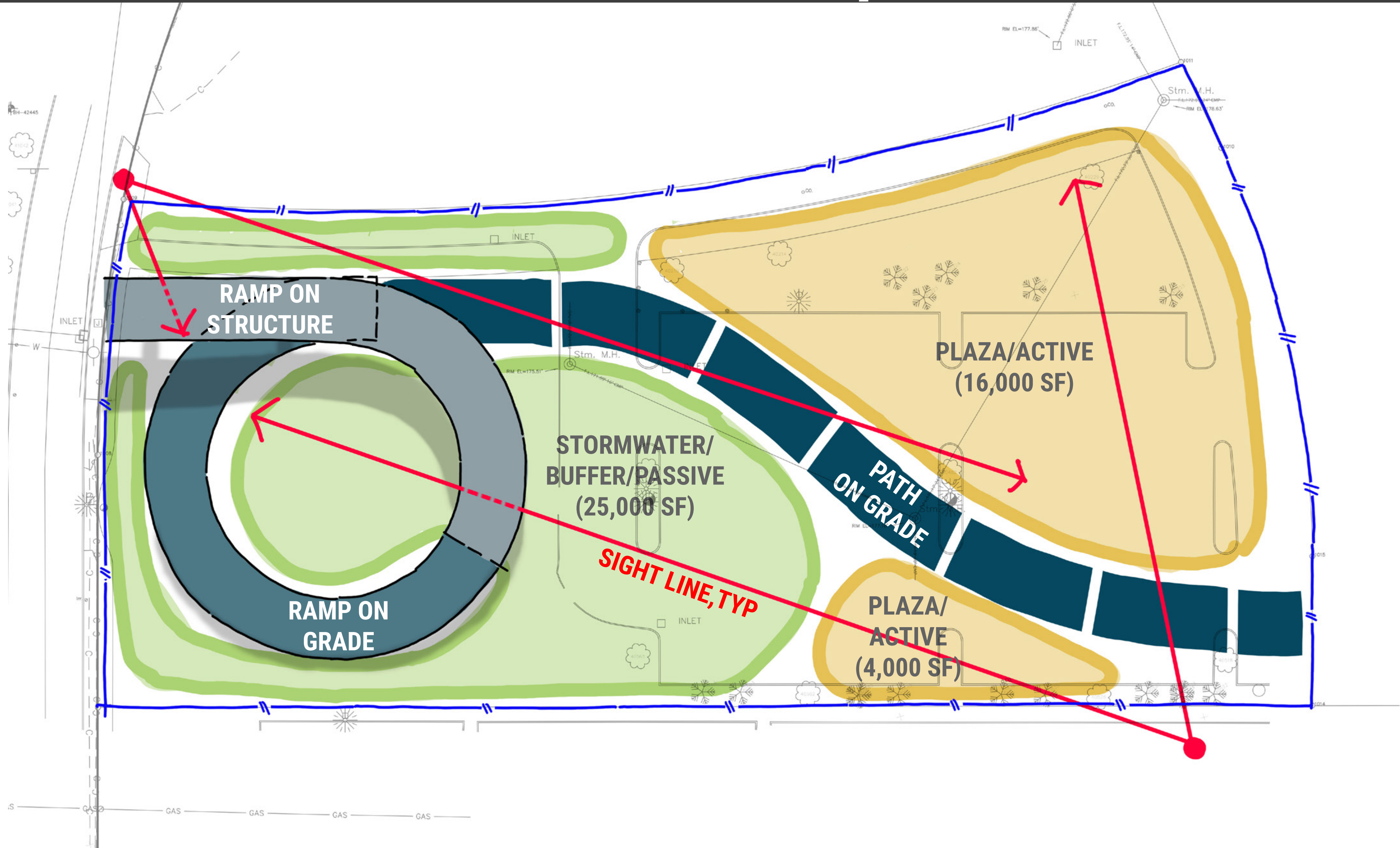


SOUTH SWOOP

# North Swoop

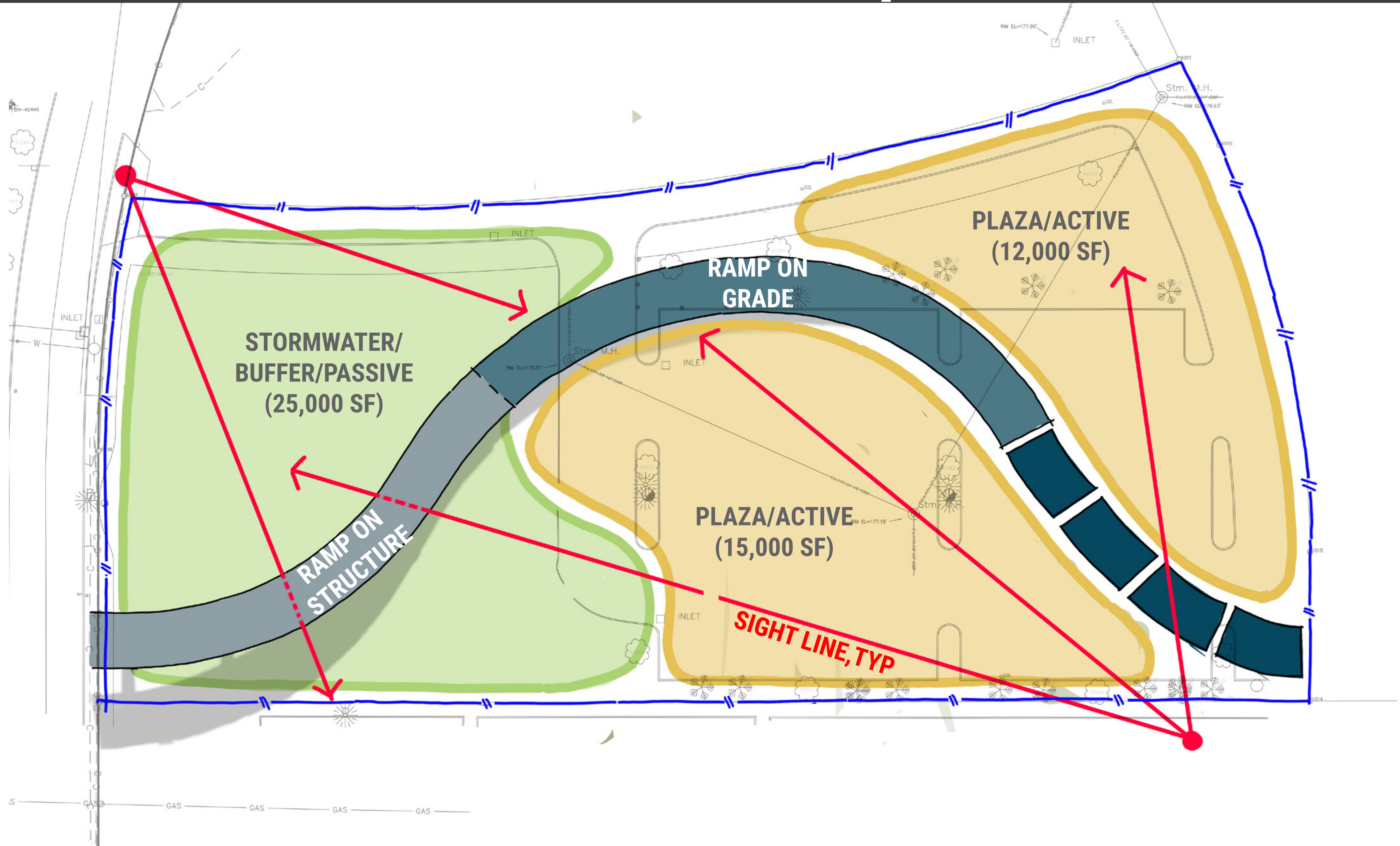


# North Loop

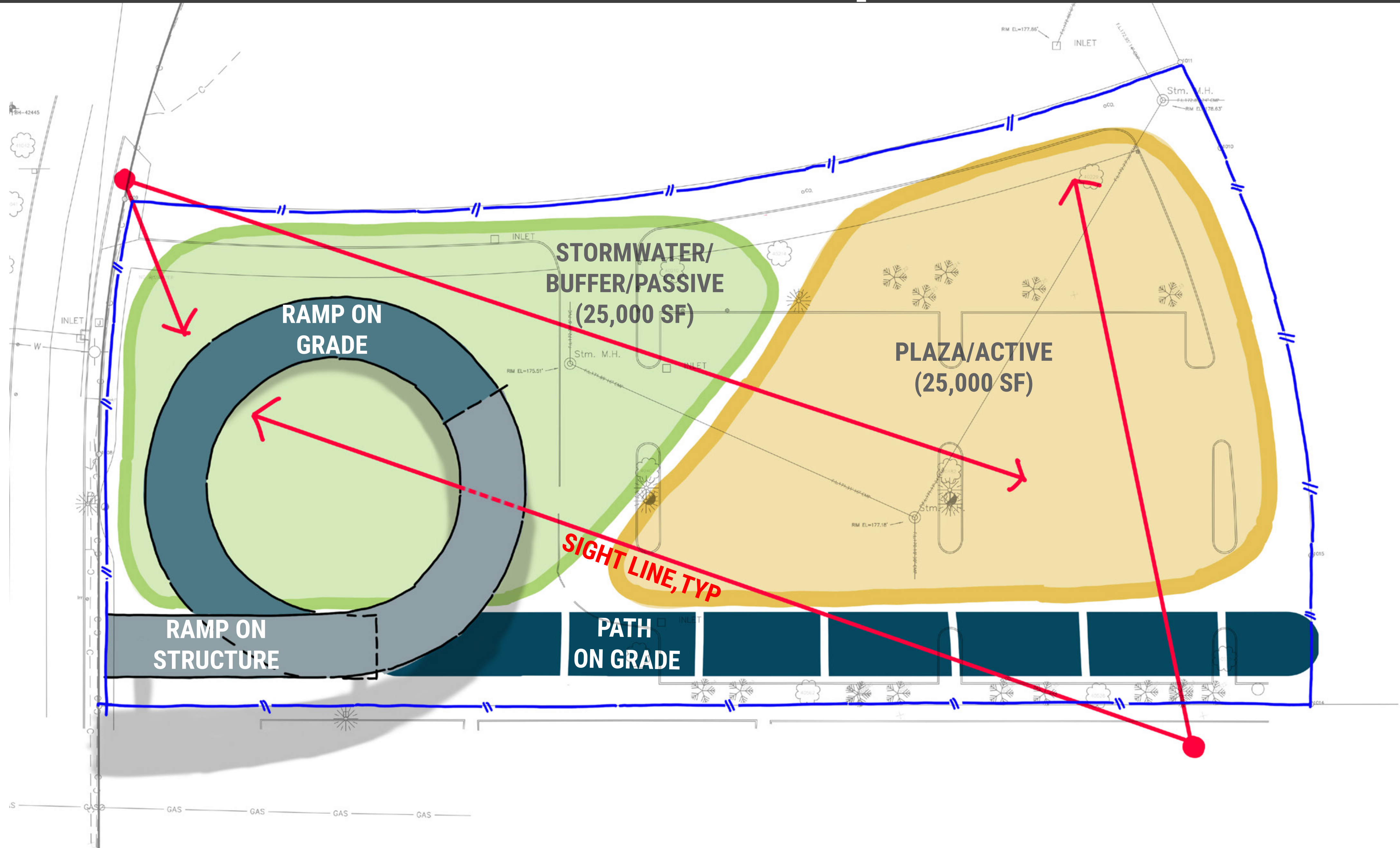




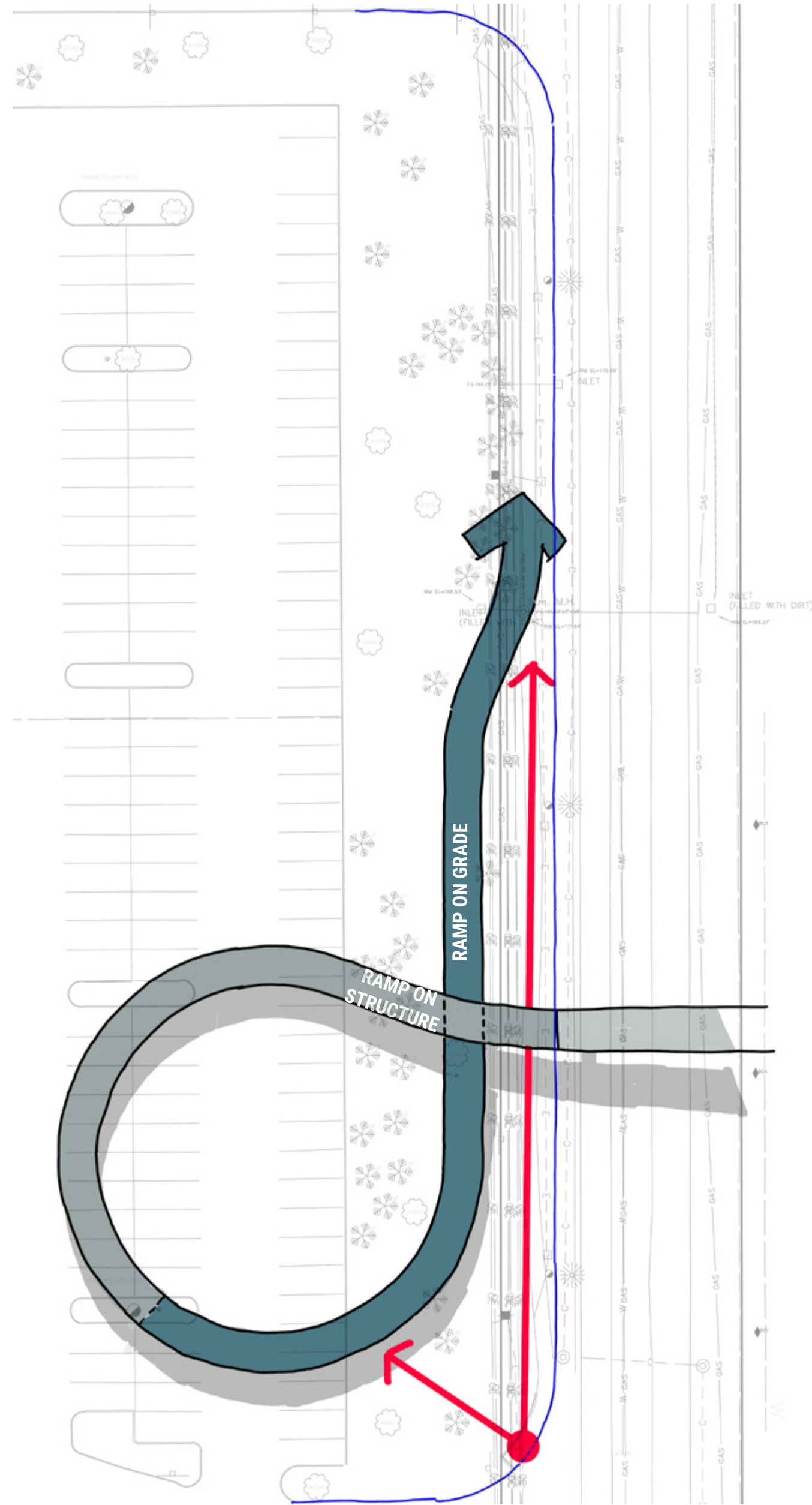
# South Swoop



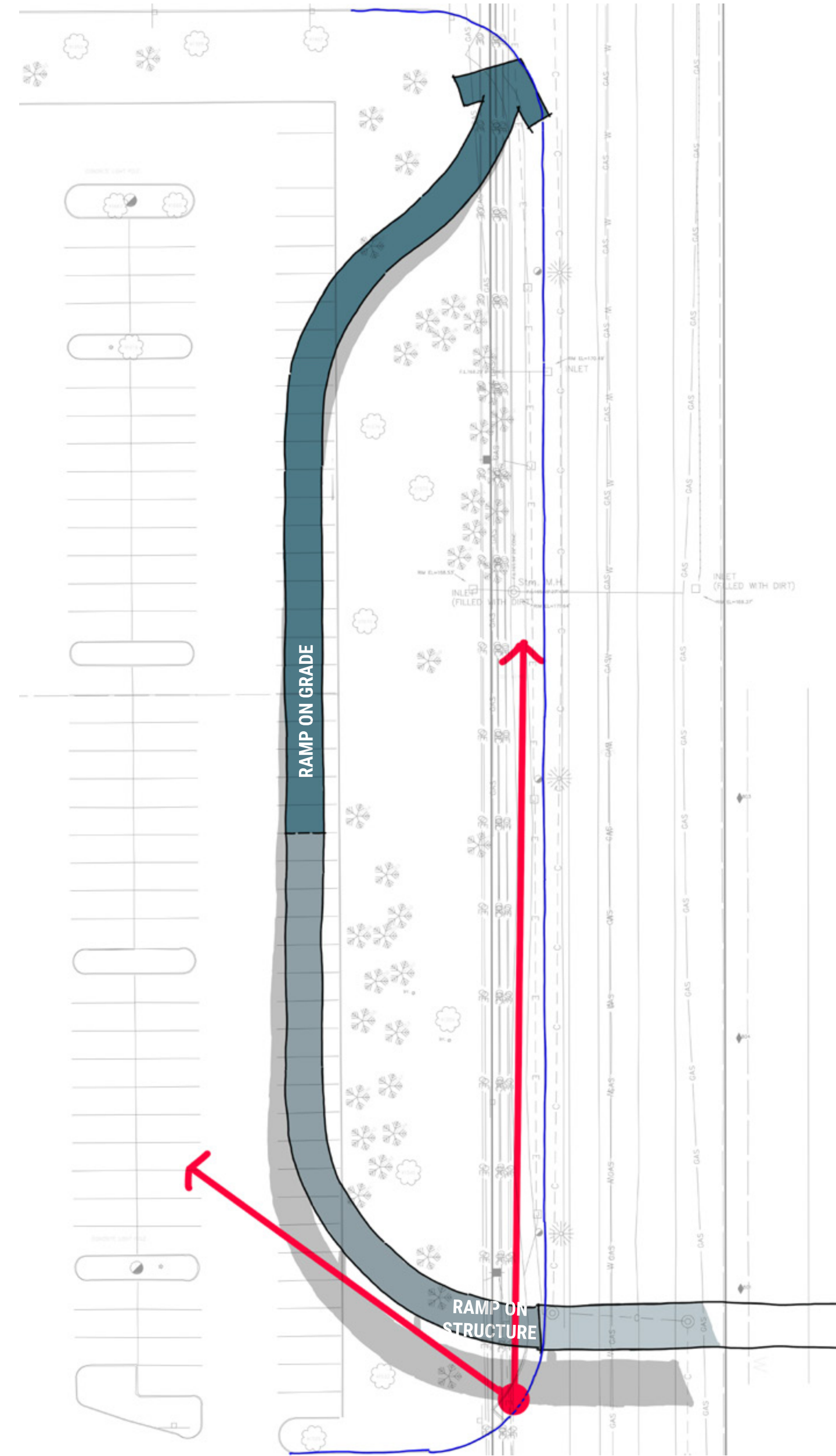
# South Loop



# WEST RAMP CONFIGURATIONS



WEST LOOP

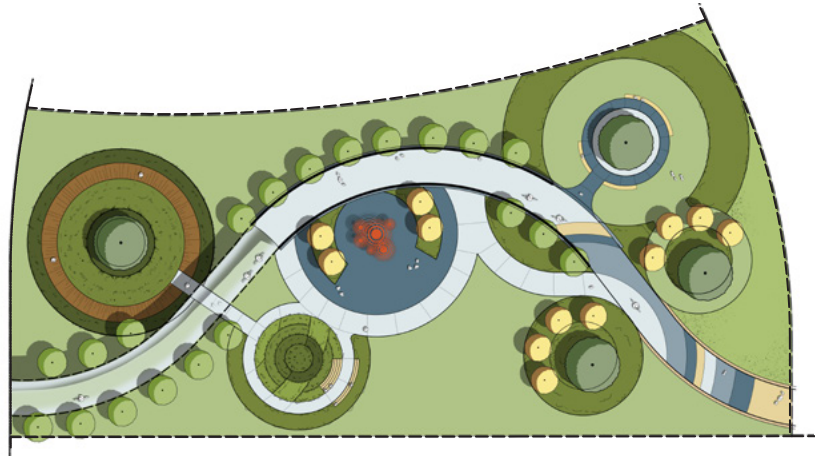


WEST SWOOP

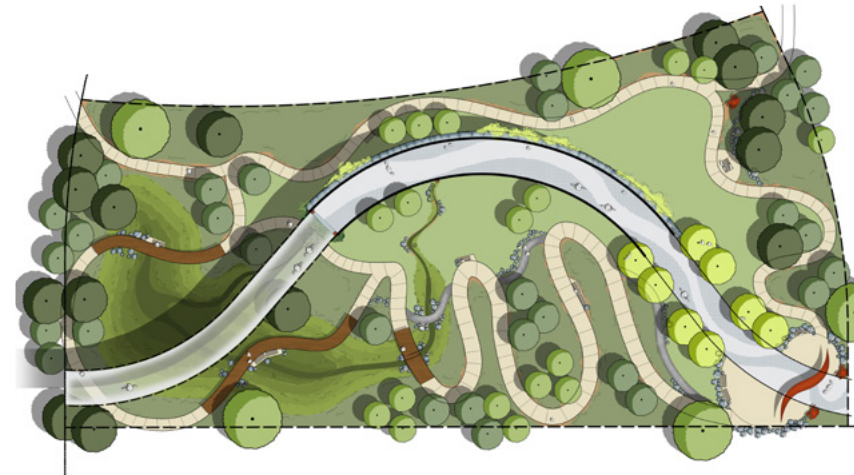
# DESIGN OPTIONS OVERVIEW

## EAST RAMP + GATEWAY PLAZA DESIGN OPTIONS

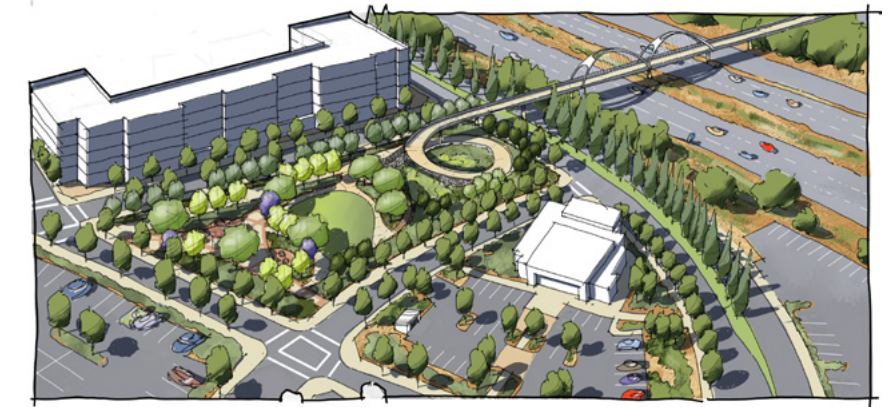
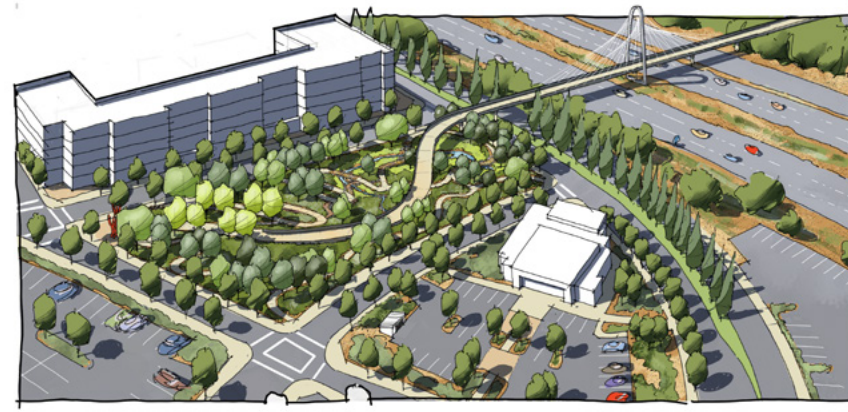
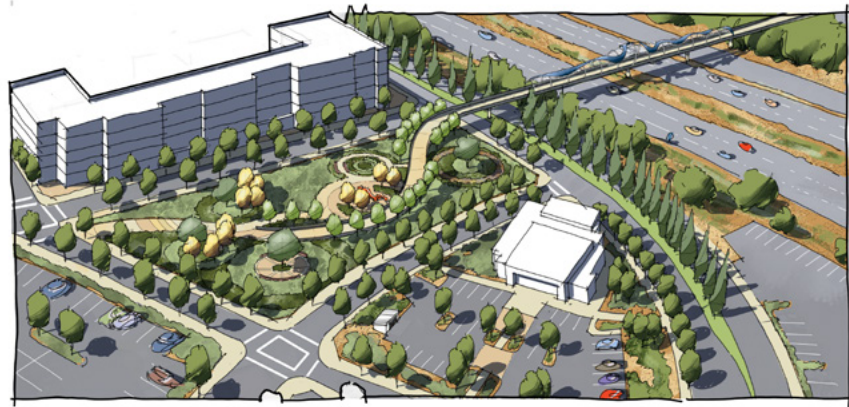
Drops and Ripples



River Oxbow

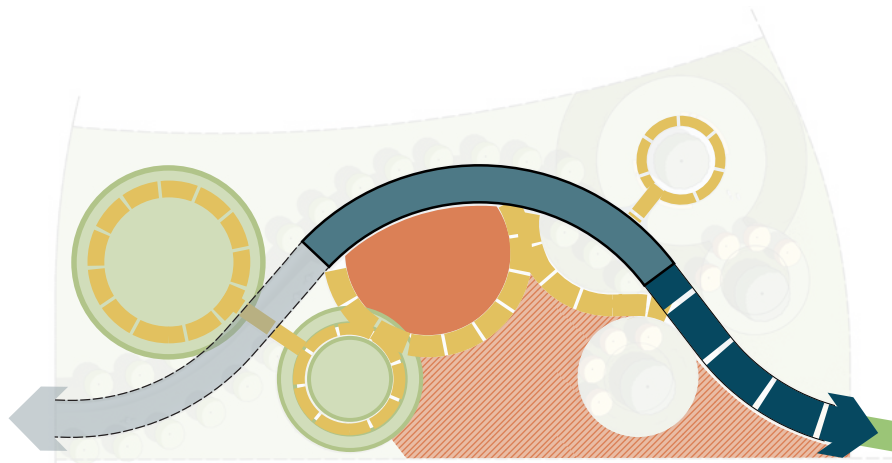


Gateway Loop



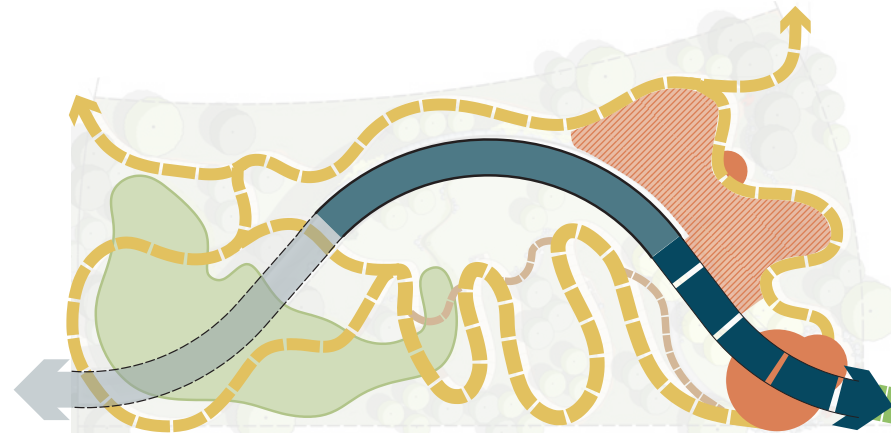
**EAST RAMP + GATEWAY PLAZA DESIGN OPTIONS**

Drops and Ripples



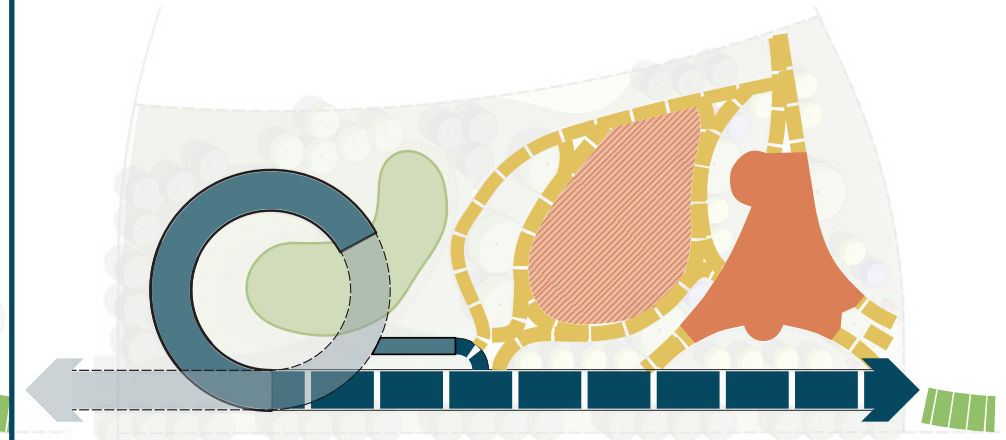
Contemporary and elegant, the Drops and Ripples design concept creates a series of looping pathways and interconnected gathering spaces marked by a rise and fall in topography. Concentric paving patterns, an interactive art plaza, and an open lawn draw visitors in and create opportunities for a range of activities and gatherings.

River Oxbow



Echoing the Willamette River's sinuous course, the River Oxbow design celebrates the movement of water with meandering pathways, winding paving patterns, cascading greenwalls, stormwater channels and pond.

Gateway Loop

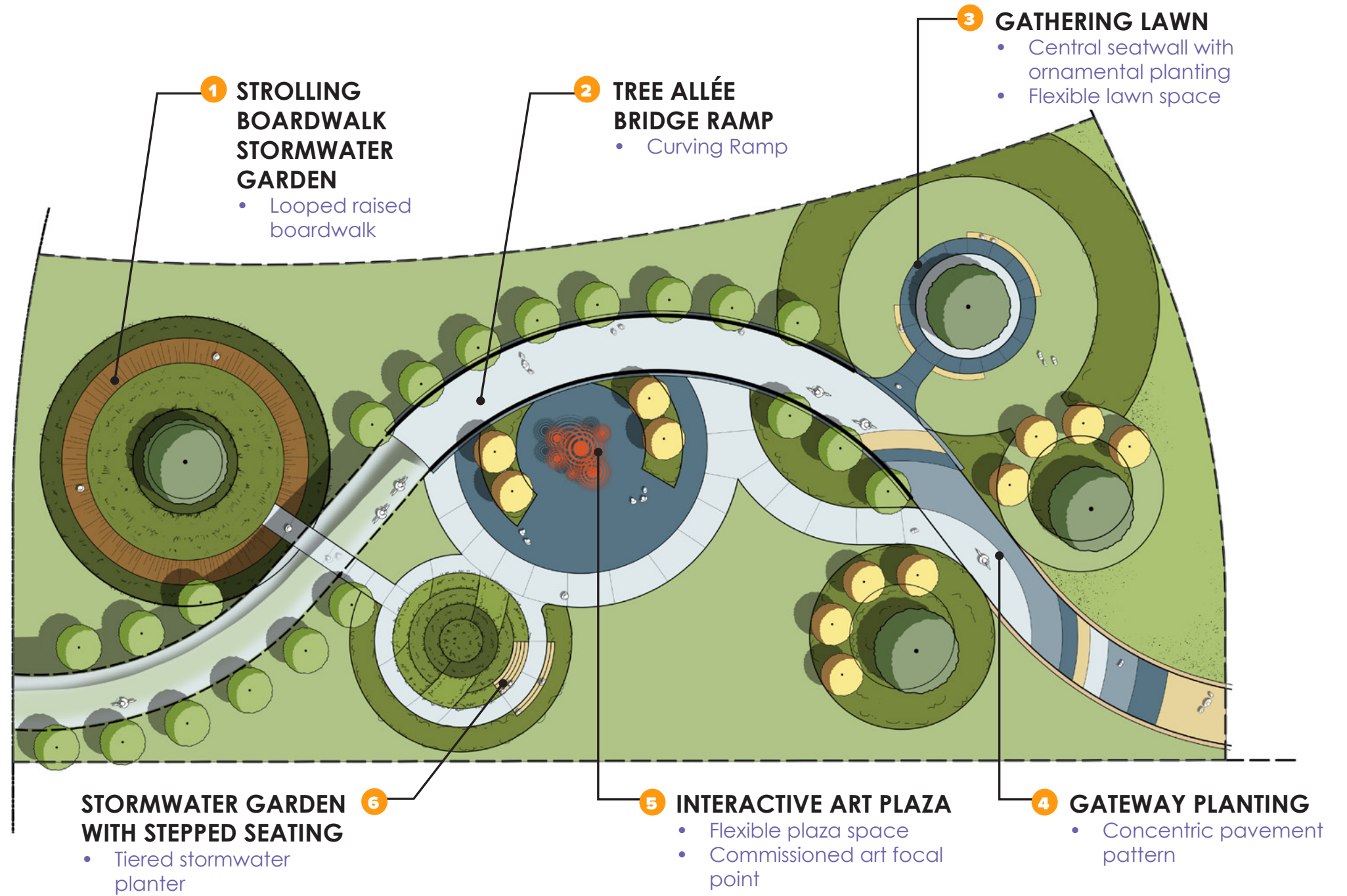


The spiraling ramp of the Gateway Loop concept preserves large open spaces to support recreation for existing and future development. Looping paths, a great lawn, and covered picnic area provide flexible gathering spaces for individuals and groups.

- Elevated Ramp
- Ramp on Solid Structure
- Main Path on Grade
- Emerald Chain
- Plaza/Park Pathway
- Secondary Pathway
- Stormwater Area
- Gathering Space
- Flexible Gathering Space

# CONCEPT PLAN

## #1 DROPS AND RIPPLES



### LEGEND

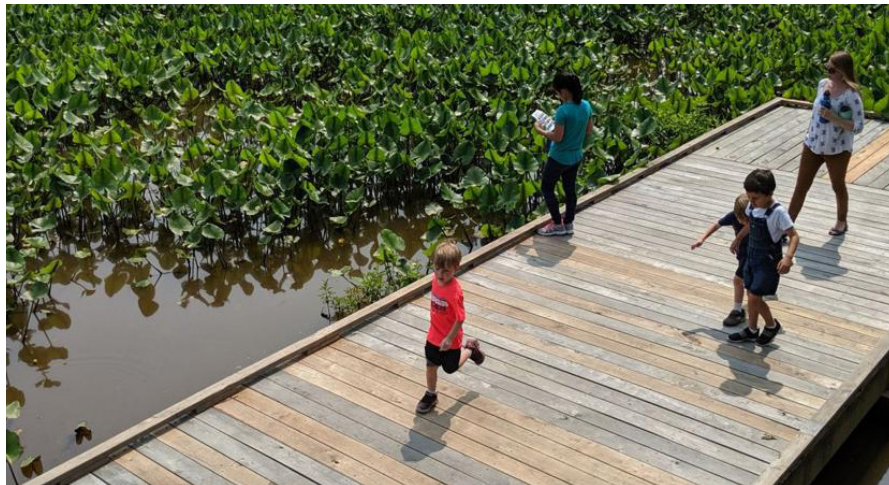
- ◆ Art (commissioned)
- Tree (new)
- Stormwater Planter
- Ornamental Planter
- Open Lawn
- Paved Pathway
- Boardwalk



# INSPIRATION IMAGES

## #1 Drops And Ripples

1 STROLLING BOARDWALK STORMWATER GARDEN



2 TREE ALLÉE BRIDGE RAMP



3 GATHERING LAWN



# INSPIRATION IMAGES

## #1 Drops And Ripples

### 4 GATEWAY PLANTING



### 5 INTERACTIVE ART PLAZA



### 6 STORMWATER GARDEN WITH STEPPED SEATING



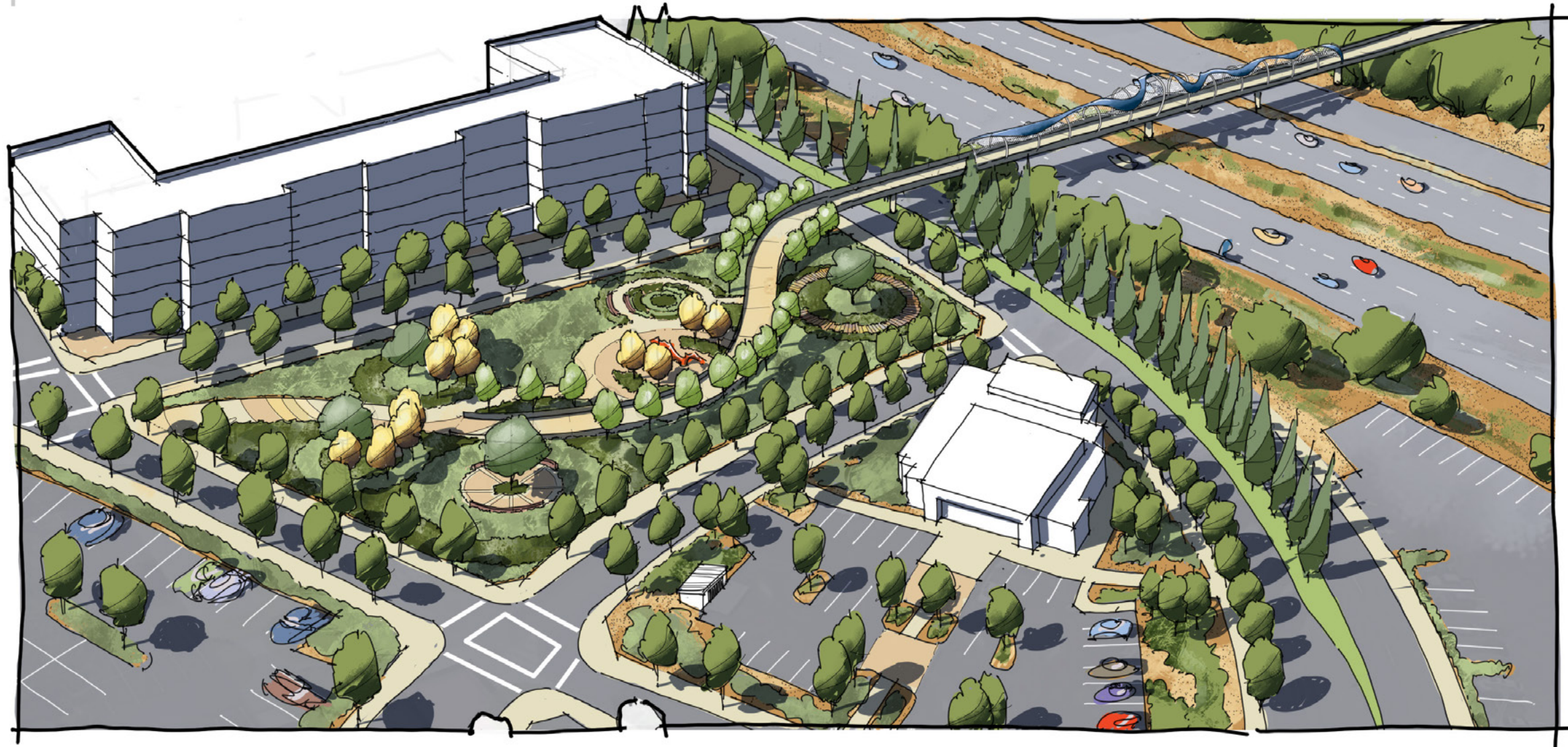


**CONCEPT RENDERING**  
#1 Drops And Ripples

**Drops and Ripples**  
East Ramp + Gateway Plaza

*shown with*

**Modern Artistic**  
Pedestrian Bridge



# CONCEPT PLAN

## #2 RIVER OXBOW

**GREEN WALLS** 1

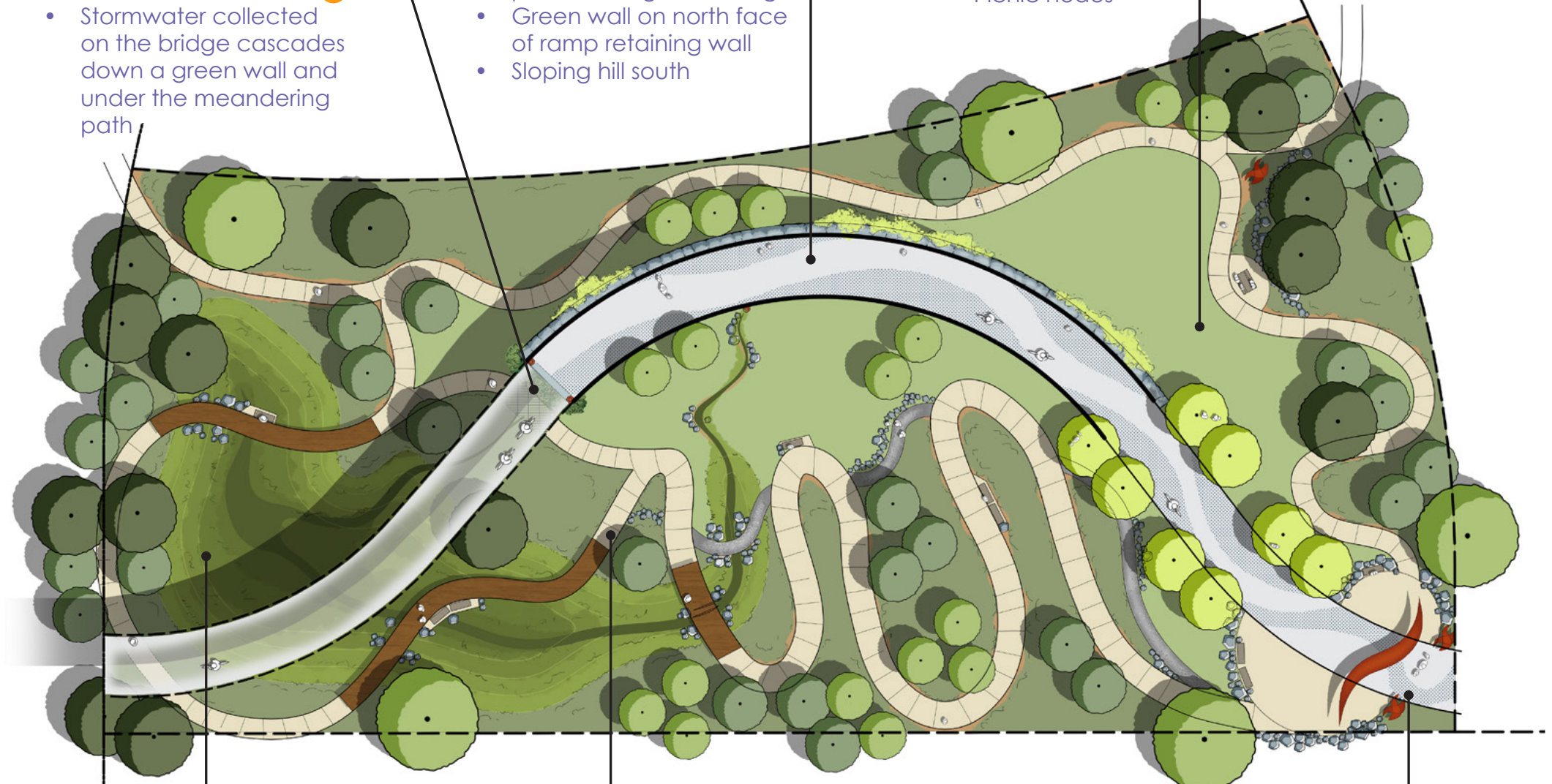
- Stormwater collected on the bridge cascades down a green wall and under the meandering path

**BRIDGE RAMP** 2

- Meandering paving pattern to signal slowing
- Green wall on north face of ramp retaining wall
- Sloping hill south

**OPEN LAWN** 3

- Flexible gathering space
- Picnic nodes



**6 STORMWATER POND**

- Swales slope down from ramp to feed wetland vegetation
- Elevated boardwalks

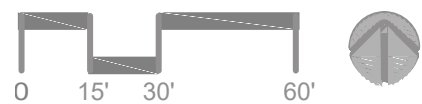
**5 MEANDERING PATHS**

- Accessible looping pathways winding under elevated ramp structure
- Seating and landscape boulders

**4 GATEWAY PLAZA**

- Commissioned art gateway
- Flexible small gathering spaces

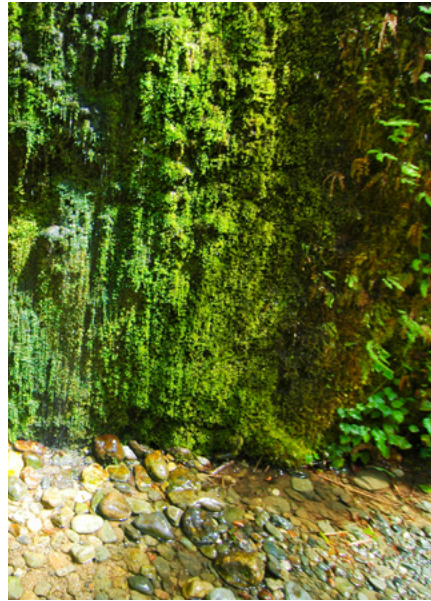
- LEGEND
- Art (commissioned)
  - Tree (new)
  - Stormwater Planter
  - Ornamental Planter
  - Open Lawn
  - Paved Pathway
  - Boardwalk



# INSPIRATION IMAGES

## #2 River Oxbow

### 1 GREEN WALLS



### 2 BRIDGE RAMP



### 3 OPEN LAWN



# INSPIRATION IMAGES

## #2 River Oxbow

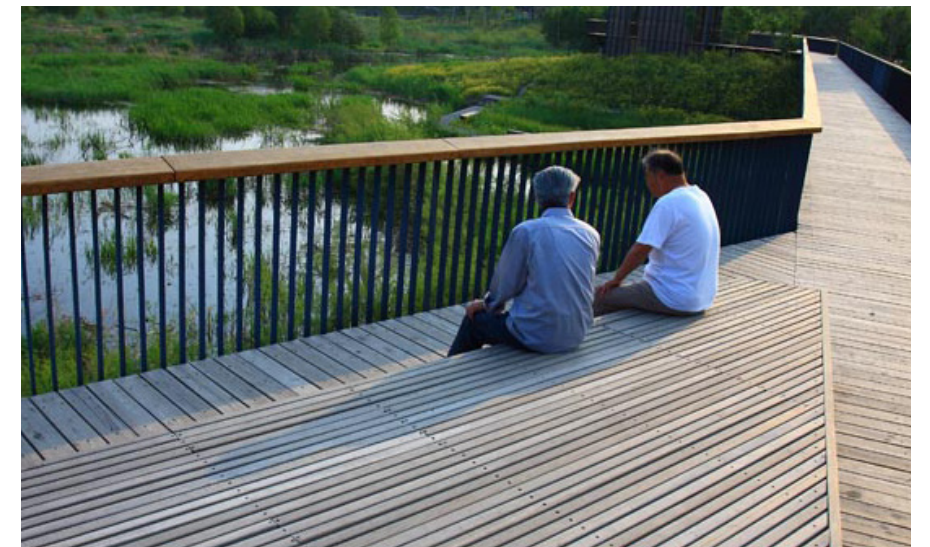
### 4 GATEWAY PLAZA



### 5 MEANDERING PATHS



### 6 STORMWATER POND

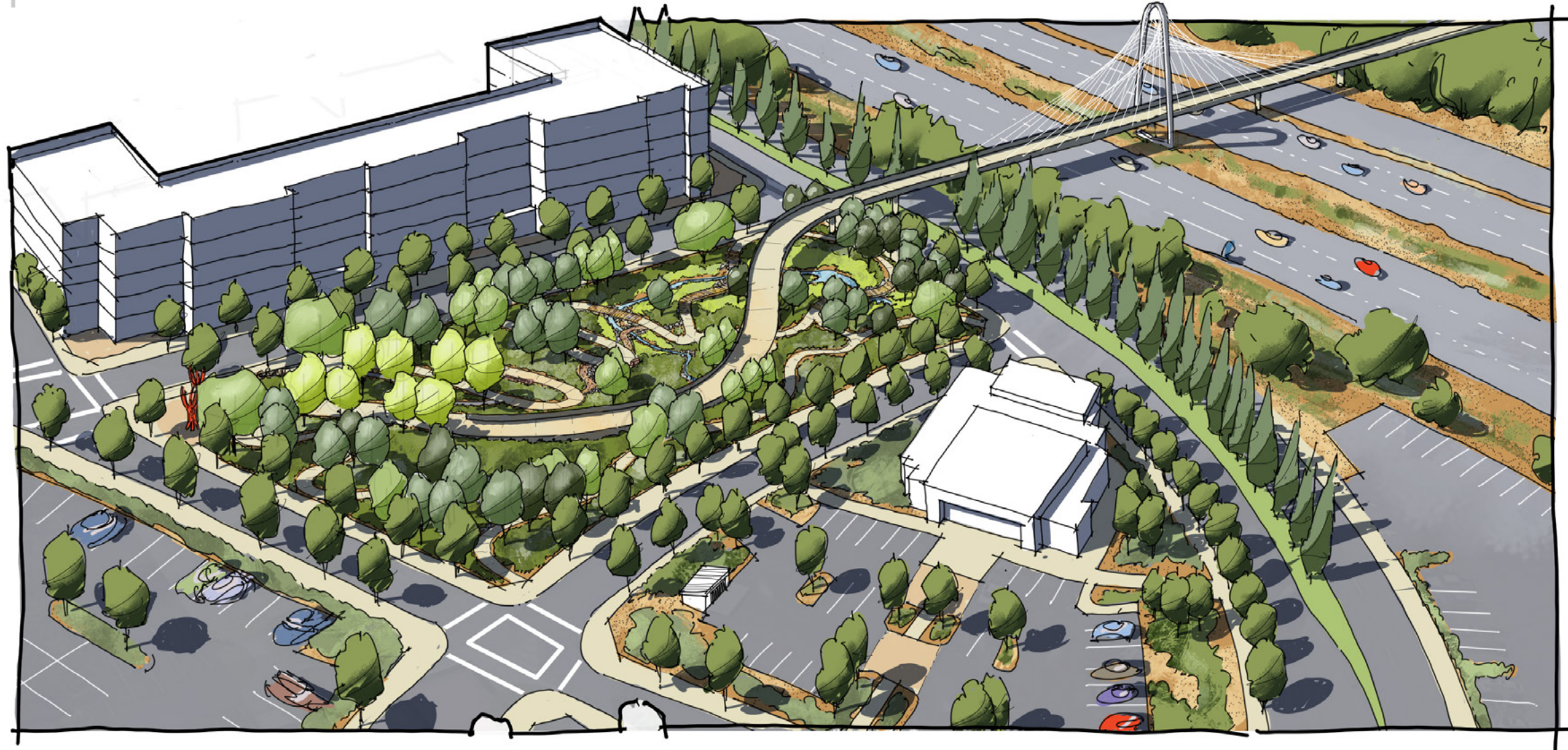


**CONCEPT RENDERING**  
#2 River Oxbow

**River Oxbow**  
East Ramp + Gateway Plaza

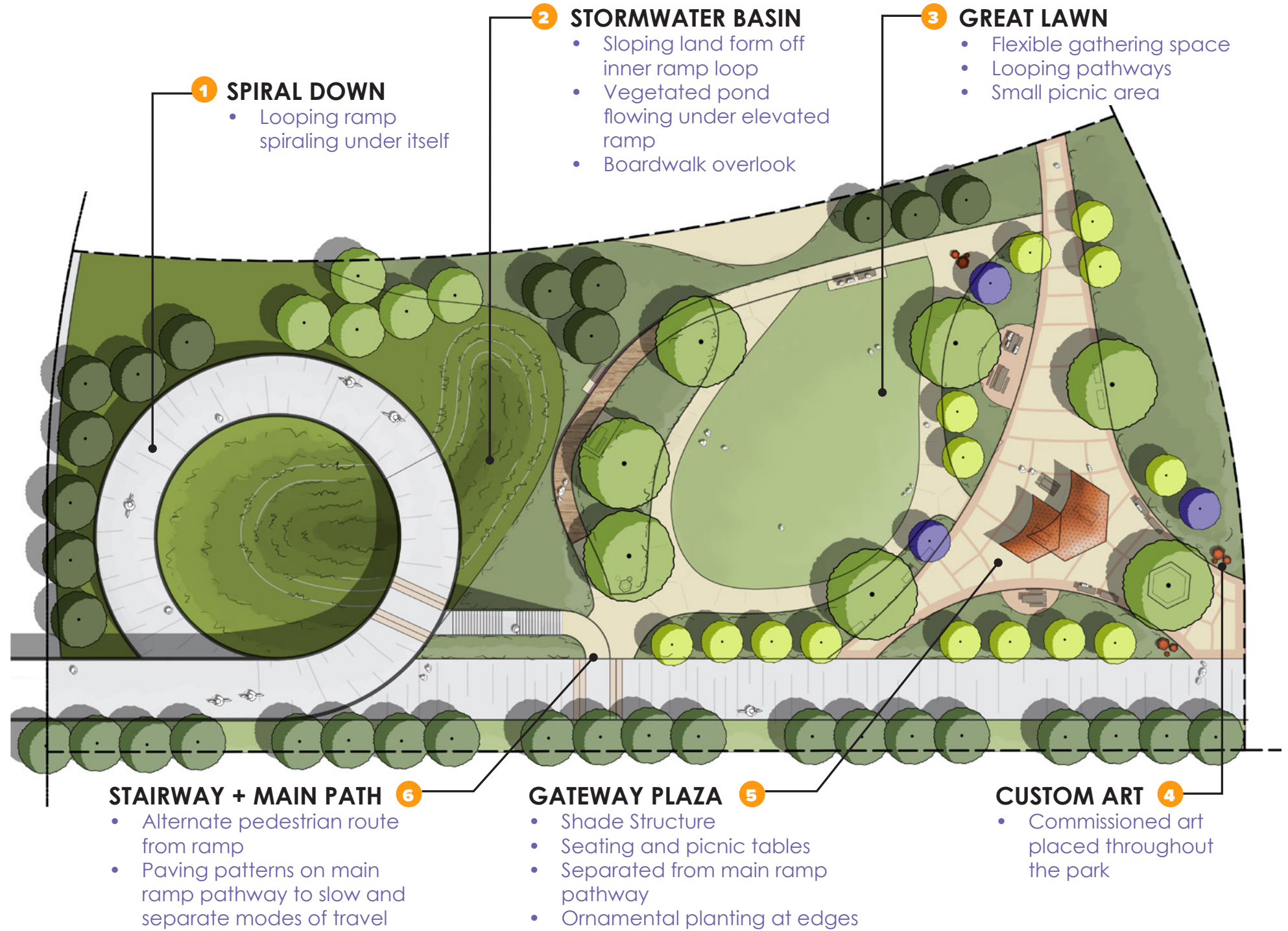
*shown with*

**Cable Stay**  
Pedestrian Bridge



# CONCEPT PLAN

## #3 GATEWAY LOOP



### LEGEND

- Art (commissioned)
- Tree (new)
- Stormwater Planter
- Ornamental Planter
- Open Lawn
- Paved Pathway
- Boardwalk



# INSPIRATION IMAGES

## #3 Gateway Loop

### 1 SPIRAL DOWN



### 2 STORMWATER BASIN



### 3 GREAT LAWN



# INSPIRATION IMAGES

## #3 Gateway Loop

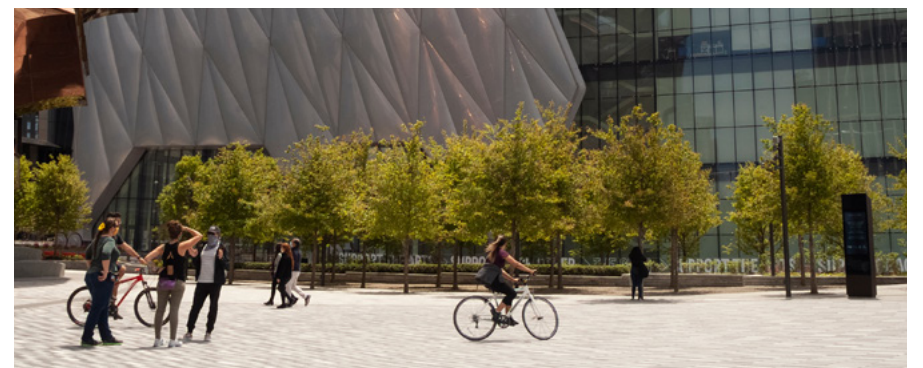
### 4 CUSTOM ART



### 5 GATEWAY PLAZA



### 6 STAIRWAY + MAIN PATH



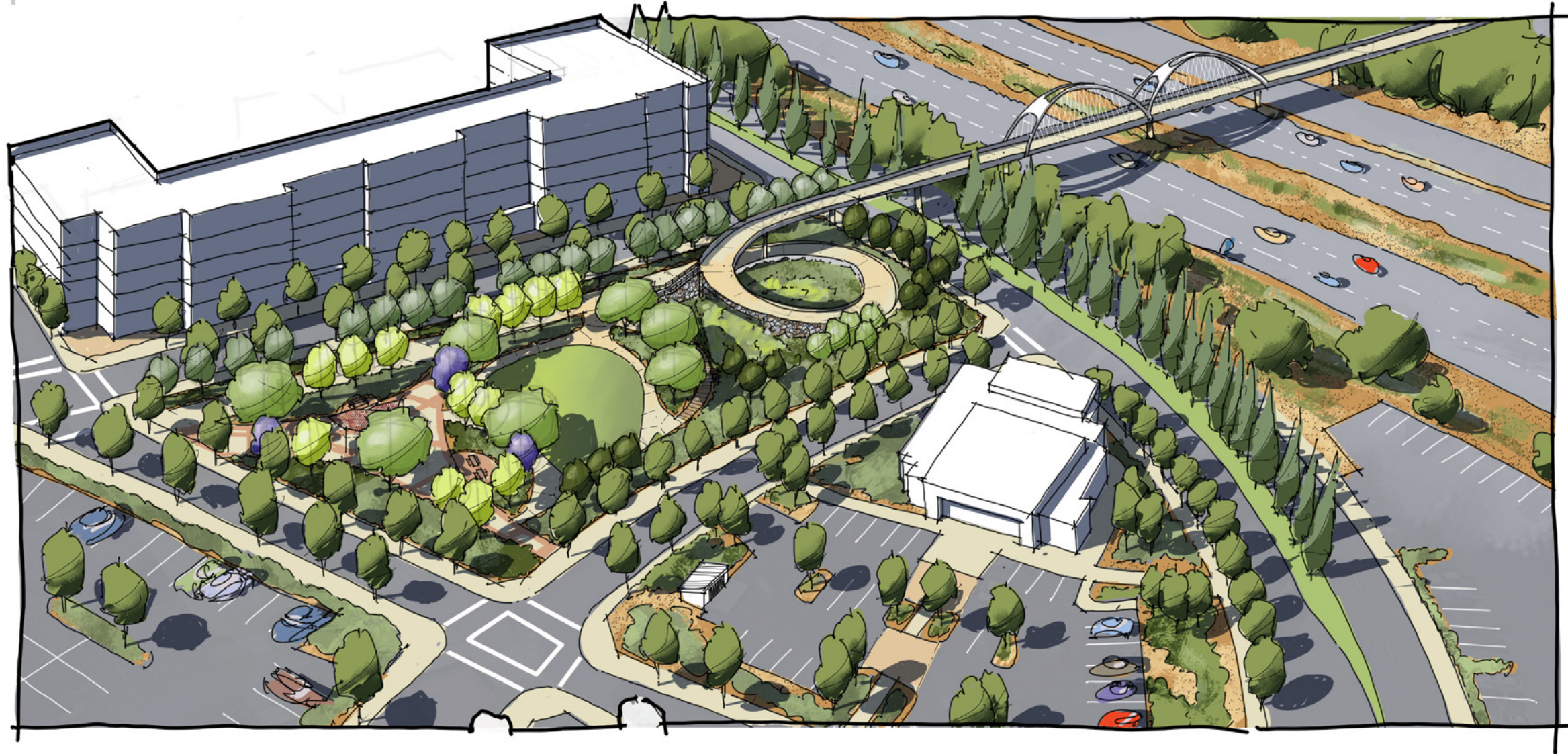


**CONCEPT RENDERING**  
#3 Gateway Loop

**Gateway Loop**  
East Ramp + Gateway Plaza

*shown with*

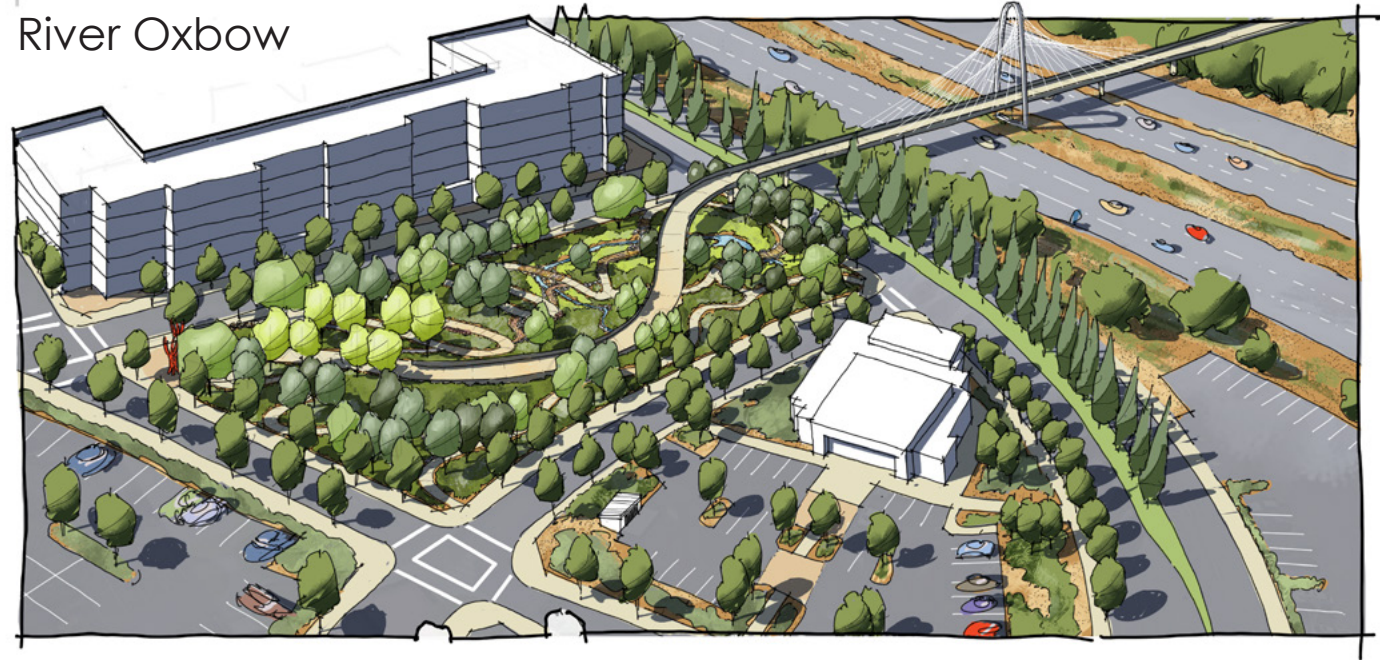
**Tied Arch**  
Pedestrian Bridge



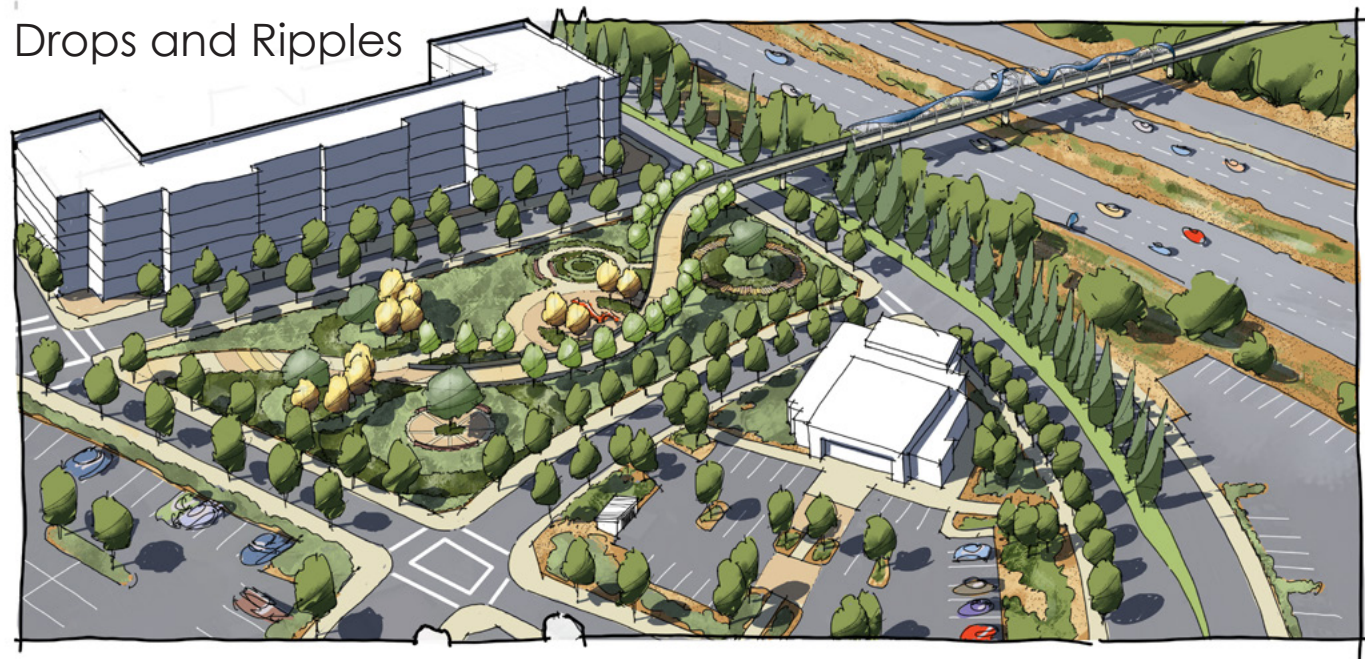
**DESIGN OPTIONS REVIEW**

**EAST RAMP + GATEWAY PLAZA DESIGN OPTIONS**

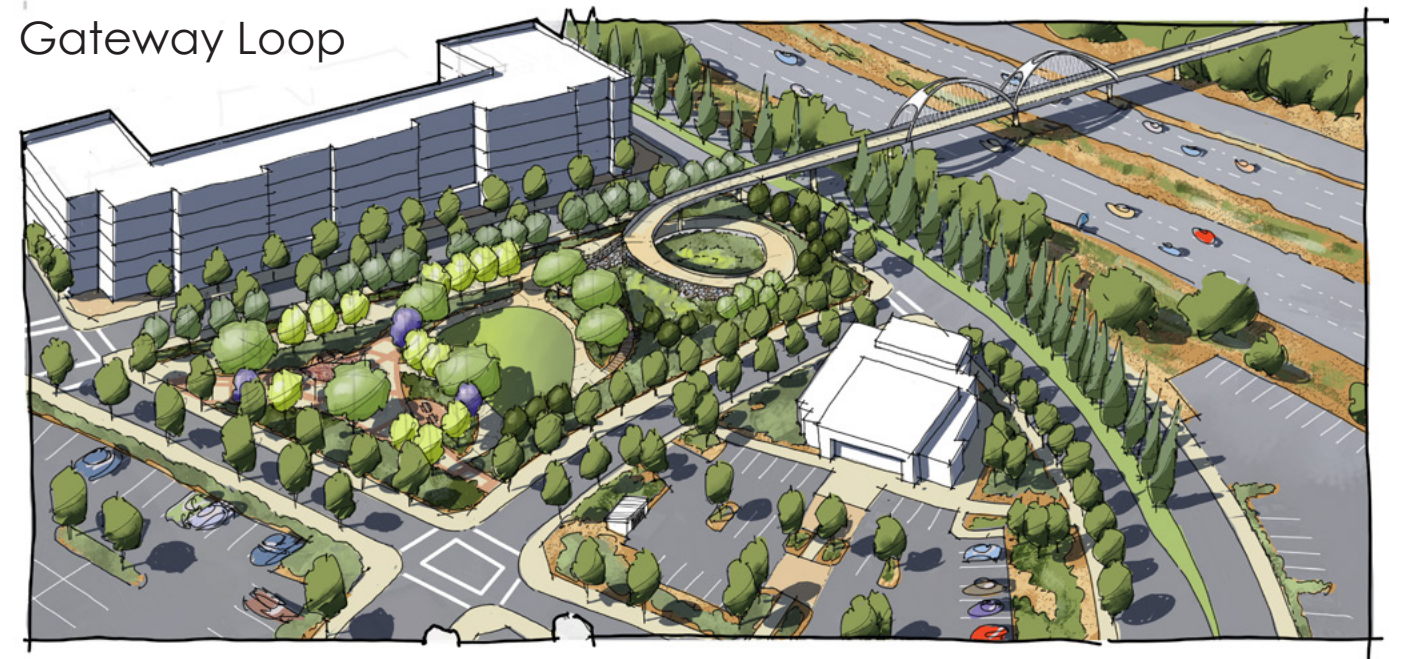
River Oxbow



Drops and Ripples



Gateway Loop



# DESIGN OPTIONS REVIEW

## DROPS AND RIPPLES

### Key Design Features

- Interconnected gathering spaces
- Series of looped pathways
- Interactive art plaza

### Includes:

- Tree allee
- Concentric paving patterns
- Two stormwater gardens
- Boardwalk loop
- Gathering lawn
- Gateway planting



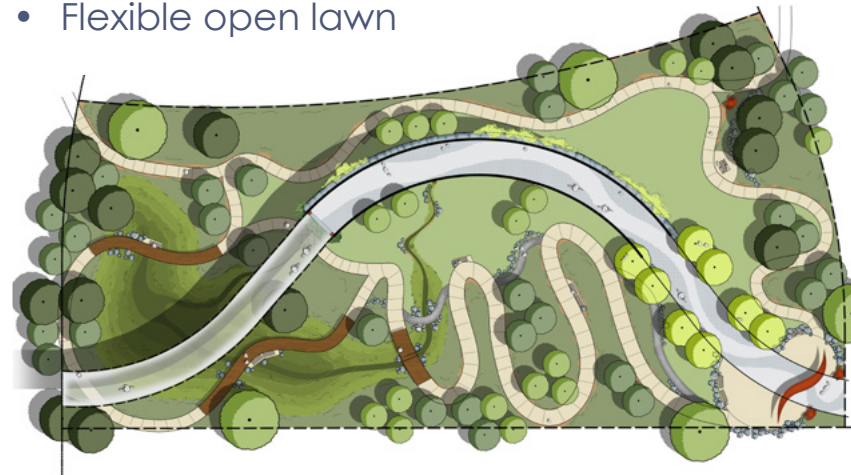
## RIVER OXBOW

### Key Design Features

- Meandering, looped paths
- Greenwall cascading stormwater feature
- Gateway plaza

### Includes:

- Stormwater pond
- Northern greenwall (trellis/climbing)
- Boardwalk segments
- Basalt boulders
- Native planting areas
- Flexible open lawn



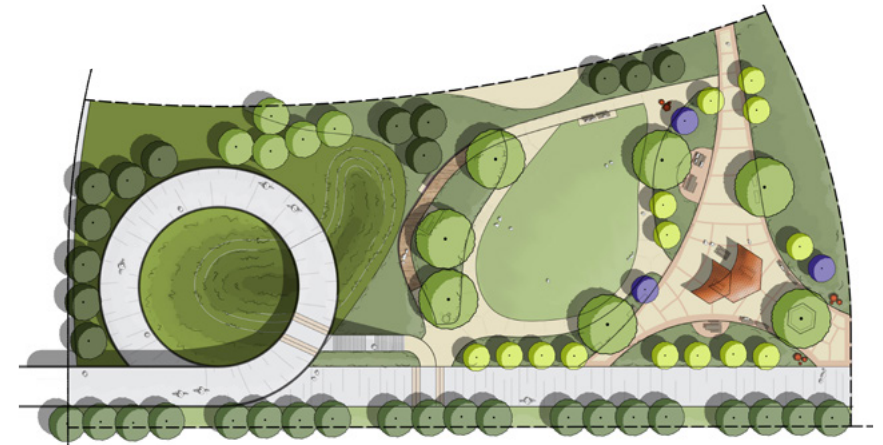
## GATEWAY LOOP

### Key Design Features

- Large gateway plaza with shade structure
- Central open space
- Extensive planting areas

### Includes:

- Spiral ramp
- Great lawn
- Stairway bridge access (secondary route)
- Small integrated art features
- Stormwater basin



<b>BASELINE COST</b>	<b>100%</b>	<b>112%</b>	<b>108%</b>
<b>LOW RANGE</b>	\$1.62M	\$1.84M	\$1.75M
<b>HIGH RANGE</b>	\$3.16M	\$3.73M	\$3.75M
<b>COST PER SF</b>	\$24.27 - 47.27	\$27.59 - 55.84	\$26.26 - 56.14