



JULY 2020

# MONTHLY REPORT

## From The Director's Office

Greetings! The dog days of summer are finally here, which means for Community Development Department staff it is capital construction season. As you make your way around town, you will see construction activity in virtually every quadrant of the community. City staff are working hard to deliver high quality infrastructure projects on time and under budget. The following is a highlight of major project activity:

- The Garden Acres Road urban upgrade project is under construction. The project involves reconstruction of a rural local access road to an urban industrial roadway including the installation of a 66" water transmission pipeline for the Willamette Water Supply Program (WWSP). The extension of utilities and transportation improvements as part of this project are necessary to prepare the Coffee Creek and Basalt Creek Industrial Areas for future industrial development. Completion of this catalytic project is scheduled for early 2021.
- The annual street maintenance project is anticipated to begin in August and will rehabilitate the pavement on Elligsen Road, Day Road, Main Street, Parkway Avenue, and Burns Way. The project will include pedestrian enhancements, traffic signal improvements, and ADA ramp upgrades within the project boundary. The upgrades to Day Road are significant, resulting in improvements to perhaps the roughest road in the city.
- The Willamette Water Supply Program is currently constructing pipeline main (PLM) 1.1, which involves construction of a 66" water transmission pipeline from Arrowhead Creek Lane near the Water Treatment Plant to Wilsonville Road. The program has also mobilized on the Water Treatment Plant park site getting ready for seismic improvements to the bank of the river.
- Regional Parks 7 and 8 (Oulanka and Tivoli Parks) are under construction in Villebois with seating, wetland overlooks, nature play, and picnic areas—including a ½ mile segment of the regional Ice Age Tonquin Trail. Construction activity will continue into 2021.
- In Charbonneau, the French Prairie Road Phase II Utility Repair project is now underway to repair, replace, and rehabilitate the area's storm, sewer, water, and pavement infrastructure. Completion of this project is scheduled for the end of 2020.
- The Memorial Park Pump Station replacement project is underway, replacing and upsizing a sanitary sewer pump station serving the east side of the community. Construction activity will continue into spring 2021.
- The I-5 Undercrossing Trail Phase 2 will begin construction in September. This project extends the I-5 Undercrossing Trail through newly acquired property adjacent to I-5 and into the existing Boones Ferry Park. Construction is scheduled to be complete by the end of the year.

Wilsonville is very fortunate to have such a dedicated, hard working group of professionals thoughtfully advancing the infrastructure plans for this wonderful city.

Respectfully submitted,

Chris Neamtzu, AICP  
Community Development Director

## Building Division

### What-cha Looking At? Energy Conservation

Oregon's Building Codes Division (BCD) develops energy codes and standards for regulating a building's effective use of energy through design and construction. The BCD administers the 2019 Oregon Zero Energy Ready Commercial Code and the 2017 Oregon Residential Specialty Code which cover various requirements for insulation, equipment, windows, lighting, and more for use in new construction. The intent is to provide flexibility to enable the use of innovative approaches and techniques to better achieve an effective use of energy. Wilsonville's Building Division adopts these codes for use in new construction throughout the city.

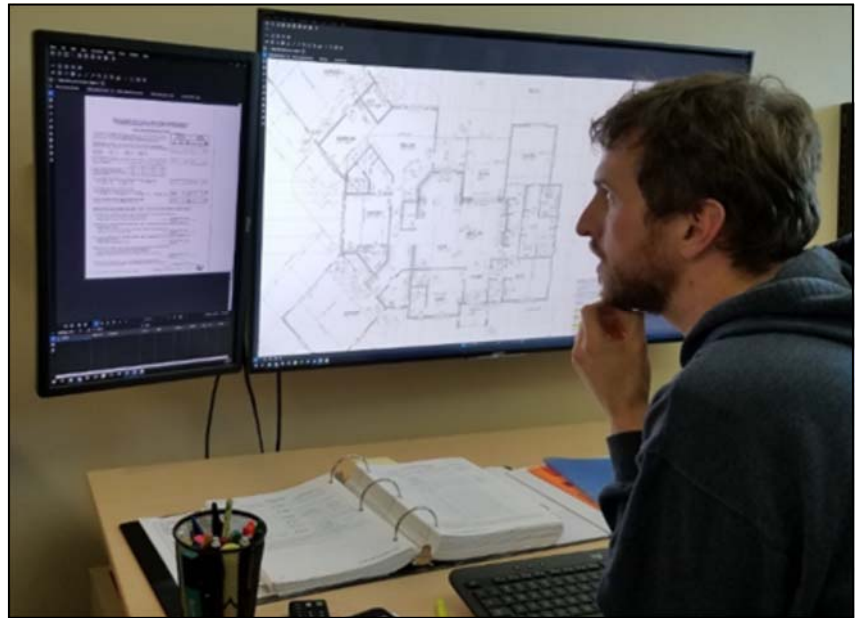
As a plans examiner, my primary role is to review construction plans and energy compliance calculations and compare them to the energy codes. If designs do not comply with the codes, I provide direction and suggestions for improving plans to ensure compliance. At the end of the day, my goal is to approve a project and get it to success quickly and creatively, without compromising the minimum requirements of the code.

BCD's recent report highlights Oregon's position as a national leader in energy efficient building codes. The report concludes with this statement in regard to consistency across the state:

*"Other states may say they have adopted a particular cutting-edge code, but if local jurisdictions never adopt it, state or local inspectors never enforce it, and labor is not trained to it, it is only as good as the paper it's written on. That's not the case in Oregon."*

The cooperative interplay between the state, city municipalities, inspectors, and builders is at the core of our continued success as an expanding, sustainable, and safe community. The fantastic relationship between Wilsonville's Building Division and the public has led to an open dialogue and increased education about the importance of energy conservation codes and standards. Our focus is on two things, serving the customer and ensuring a safe, energy efficient, and accessible built environment for all who work within or call Wilsonville their home.

—Carl Brown, Building Inspector/Plans Examiner



## Economic Development Division

### Urban Renewal

- TIF Zone Program: The Urban Renewal Agency (URA) Task Force convened on July 22 to review new program framework that allows for added flexibility of site location and eligibility criteria, which is ideally adaptable to both recession and growth economies. Key elements of the proposed concept—tentatively called Wilsonville Investment Now (WIN)—include:
  - Eligibility Criteria: The three existing categories of program qualifications (value of new construction, number of new employees, and compensation of new employees) would remain the same under the new program. However, the proposed thresholds have been adjusted to provide greater flexibility in recognition that no development in the past has qualified under the existing thresholds in the program.
  - Tiers of Benefits: The proposal calls for different levels of benefits being offered to businesses that meet different qualifying thresholds.
  - Citywide Eligibility: The new program will not designate specific properties up-front, but allow any qualified development to utilize the program citywide.
  - Tax Rebate: As with the original TIF Zone program, qualified developments would receive a tax rebate if all standards are met, as opposed to a tax abatement. This means participating businesses will pay property tax up front and on time, but receive a partial or full rebate later once they demonstrate that they have met the required thresholds.
  - WIN Area Formation Approach: City Council would adopt the framework and WIN Program up front, but would not adopt individual WIN areas until later, once a developer has submitted a qualifying application for a specific site.

### Wilsonville Childcare Conversation

The City of Wilsonville Economic Development Department participated in a virtual conversation on the childcare landscape in Wilsonville on July 29. Hosted by Clackamas Workforce Partnership, this conversation is intended to be of value to providers, parents, policymakers and business community (workforce, HR professionals) who would like to:

- Learn more about the childcare landscape in the Wilsonville area
- Understand what is currently being done locally and statewide to address issues of concern
- Work with community members to develop local solutions

This severe shortage in available childcare slots, especially infant and toddler care, is putting strain on working families and businesses across our region. COVID-19 has intensified existing issues and brings even more challenges include some of the following: open slots going unfilled; front-line workers not being able to afford childcare; families not knowing how to find open slots for childcare; and maintaining trained childcare staff.

Prior to the COVID-19 Pandemic, Clackamas Workforce Partnership and Child Care Resource & Referral met with Wilsonville Economic Development staff. They committed to address the issue and began outreach with community stakeholders. The next step is bringing together more partners from all over the community—city, county, and state—who are committed to addressing childcare issues. It will take grassroots efforts to make much-needed progress.

## Engineering Division, Capital Projects

### **5th Street/Kinsman Road Extension (1139/2099/4196)**

This project involves the design and construction of the extension of 5th Street and Kinsman Road between Boones Ferry Road and Wilsonville Road, including water, sewer, storm, franchise utility extension, and installation of a portion of the Ice Age Tonquin Trail. Land acquisition is underway. Construction is planned to start in the first quarter of 2021.

### **Boeckman Dip Bridge Project (4212)**

The culvert inspection reports have been received. We are investigating the structural capacity of the largest culvert now to determine how much additional load it can handle. Additionally, we are looking into the feasibility of an embankment option for the roadway.

### **Elligsen Well Upgrade and Maintenance (1128)**

This project involves correcting well casing and water chemistry deficiencies in the existing Elligsen well to maintain it as a backup supply for emergencies. Recommendations for well rehabilitation were received from the City's consultant in mid-July. In August and September 2020, a contractor will be secured through a formal bidding process with rehabilitation operations through winter 2021.

### **French Prairie Road Phase II (2500/4500/7500)**

This project will include paving, storm sewer, and sanitary sewer improvements to French Prairie Road in the Charbonneau development. The contract was awarded to K&E Excavating. Construction has begun and is anticipated to be completed by the end of 2020.

### **Garden Acres Road (4201)**

This project involves the design and construction of Garden Acres Road from a rural local access road to an urban industrial roadway as part of the Coffee Creek Industrial Area plan and includes Willamette Water Supply Program segment PLM\_1.2 of the 66" water transmission pipe. Construction of the WWSP 66" raw water pipeline is underway (pictured right) beginning on Ridder Road and moving north along Garden Acres Road. Ridder Road between Peters Road and Graham's Ferry Road is now closed through August 14 for installation of WWSP pipeline and roadway improvements. Concrete curb installation on Ridder Road is scheduled to begin on August 3. Project completion is anticipated for January 2021.



### **I-5 Pedestrian Bridge (4202)**

This project involves the design and preparation of construction documents for a pedestrian and bicycle bridge over Interstate 5 from Town Center Loop West to Boones Ferry/Barber Street. The design team is currently preparing bridge and plaza design concepts based on results of the public engagement and feedback received from the Planning Commission and City Council. Planning Commission provided staff with comment on conceptual bridge types and plaza elements at their July meeting. The bridge and plaza conceptual designs will be available for public feedback on [Let's Talk, Wilsonville!](#) beginning August 3 and a virtual open house on August 13.

## Engineering Division, Capital Projects

### **Memorial Park Pump Station (2065)**

This project involves replacing and relocating the wastewater pump station in Memorial Park. The contract was awarded to McClure and Sons. Construction began in July with completion in March 2021.

### **Street Maintenance Project (4014/4118)**

Construction began the first week of August with curb ramp replacements on Elligsen Road. Street maintenance work will occur on Day Road, Elligsen Road, Burns Way, Parkway Avenue, and Main Street between August and November.

### **WTP Expansion to 20 MGD (1144)**

This project will expand the Water Treatment Plant (WTP) capacity to 20 MGD and incorporate related WTP capital improvements, including Life Safety Upgrades (1137), Seismic Retrofits (1145), and Repair and Replacement (1146) projects. A CMGC alternative contracting method was approved by City Council. An engineering contract was awarded in July. Completion of the 30% design is anticipated in early 2021, at which time a CMGC solicitation would occur. Final design would be completed in coordination with the CMGC by the end of 2021, followed by construction in 2022-2023.

### **WWSP Coordination (1127)**

Ongoing coordination efforts continue with the Willamette Water Supply Program. Here are the updates on major elements within Wilsonville:

- **PLM 1.1** This is the WWSP 66" raw water pipeline between Arrowhead Creek Lane and Wilsonville Road. Construction of the pipeline is underway. Completion of this segment of pipeline is expected in Fall 2020.
- **PLM 1.2** This is the WWSP 66" raw water pipeline that is included as part of the Garden Acres Road (4201) project. Construction of the WWSP pipeline is underway and will continue through September 2020.
- **PLM 1.3** This is the remainder of the WWSP 66" raw water pipeline through Wilsonville, including Kinsman Road, Boeckman Road, 95th Avenue, and Ridder Road. WWSP is progressing toward 60% design plans. Construction is scheduled to begin in the first quarter of 2021.
- **Raw Water Facility Improvements** This capital improvement project is under the management of the Willamette Water Supply Commission and the Tualatin Valley Water District. Improvements include seismic upgrades to the existing intake facility and river embankment, as well as the installation of a 66" raw water pipe and an 8" domestic City water pipe. The Erosion Control and Public Works Permits have been issued. Construction began in July 2020.



*Raw Water Facility Improvements*

### **WWTP Master Plan (2104)**

This project will evaluate capacity of Wastewater Treatment Plant (WWTP) processes to accommodate projected growth and regulatory changes. A prioritized capital improvement plan and budget will be developed. The engineering contract was awarded in May and the project is anticipated to be completed by fall 2021.

## Engineering Division, Private Development

### DP Nicoli

The City has been working with the contractor and engineer to find a solution to a utility conflict issue between existing and new utilities.

### Dutch Bros Coffee

A new Dutch Bros Coffee Drive-Thru is proposed on the vacant parcel at the southeast corner between Park Place and Town Center Loop West. As a part of the development, a new Rapid Flash Beacon (RFB) crossing will be installed on Town Center Loop West just south of Park Place. In addition to the RFB, a marked crosswalk will also be installed at the intersection on Park Place. The project is currently under review. Grading and Erosion Control Permits have been issued.

### Fir Avenue Commons

Nine of the ten homes in this charming development are under construction on Fir Avenue in historic Old Town. Franchise utilities are being installed and granite curbs are on their way from the east coast. Final street work can begin once curbs are installed and franchise utilities are in place.

### Frog Pond Meadows

74-lot subdivision located north of Stafford Meadows and adjacent to Stafford Road. The contractor (NEI) is completing final items.

### Frog Pond—Morgan Farm Phase 2

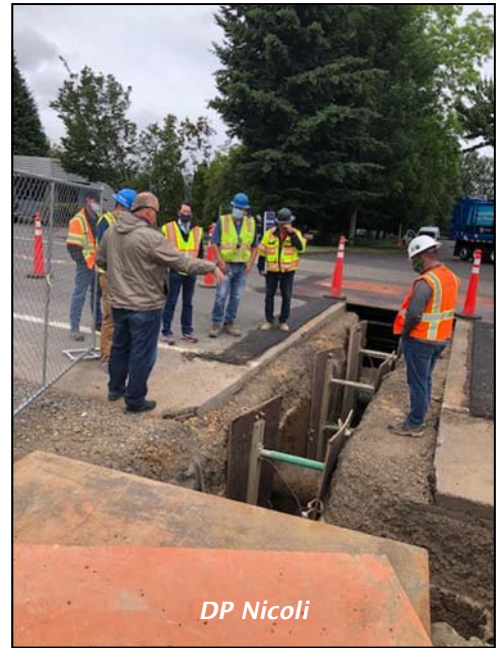
42-lot subdivision located north of Morgan Farm Phase 1. This project is in the final stages. The Engineering Division and the developer are working to address underground water intrusion at one of the stormwater swale facilities, as well as ADA slope requirements. The project is currently in the maintenance phase except for the sidewalks.

### Grace Chapel

This project involves the remodel and expansion of the south building of the former Pioneer Pacific College, along with the rerouting of a major storm drain line. The contractor continues working on site improvements. New driveways and a new sanitary connection are not yet complete.

### Hilton Garden Inn

Construction continues on this four-story hotel at Memorial Drive and Parkway Avenue. Asphalt road repair, grass seeding, and the final punch list remain before this project goes into the maintenance phase.



*DP Nicoli*



*Grace Chapel*



*Hilton Garden Inn*

## Engineering Division, Private Development

### Northstar Contractor Establishment—Clay Street

The Public Works Permit was issued for this half street improvement project (shown right) that will add sidewalks and street side swales on our border with Washington County near Coffee Creek Correctional Facility.

### Shredding Systems

This project involves adding an additional building and expanding the sanitary, water, and storm systems. A sidewalk will also be added on 95th Avenue. The project is currently under plan review.



### Siena at Villebois Fire Reconstruction

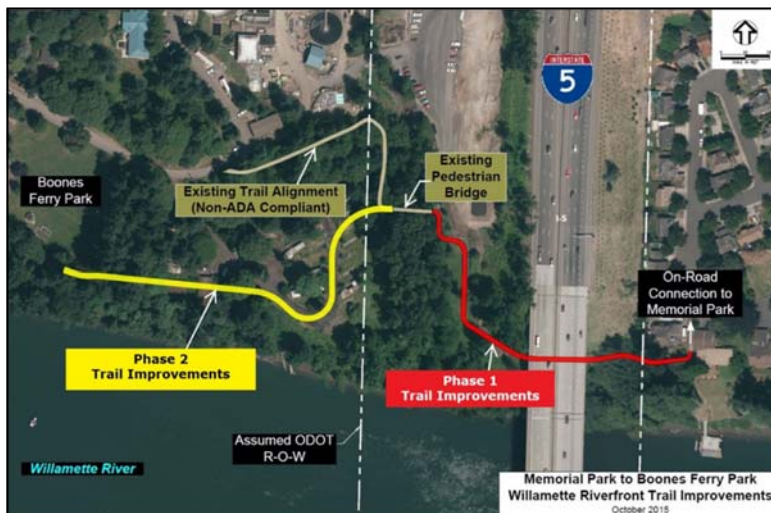
80% of the fire restoration work (shown left) is complete. The LIDA facilities still need to be installed and inspected.

## Engineering Division, Natural Resources

### I-5 Undercrossing Trail—Phase 2

On July 21, bids were opened for Phase 2 of the I-5 Undercrossing Trail. A resolution to award the construction contract is on the agenda for the August 17 City Council meeting. Construction is anticipated to begin in late August/early September.

The shared-use path between Boones Ferry Park and the existing pedestrian bridge trail connection will include construction of grade modifications, a 775-foot-long, 12-foot-wide asphalt paved shared-use path, conduit for future lighting, and optical fiber, signing, and striping. Phase 1 was completed in 2019, and Phase 2 represents the first project to be completed as part of the Boones Ferry Master Plan adopted in 2018.



### Urban Forest Management Plan

The City has kicked off an Urban Forest Management Plan (UFMP) to guide the City’s programs and actions related to the urban forest. The UFMP will provide an integrated approach to preserving, sustaining, and regenerating Wilsonville’s urban forest into the future. While the UFMP will cover the entire City, it will have two focus areas: Charbonneau and Town Center. From July 20–23, the consultant, PlanIT Geo, inventoried trees in these two areas. The consultant is finalizing a community outreach and engagement strategy, which will include the [Let’s Talk, Wilsonville!](#) website, virtual meetings, and community-wide and focus area online surveys.

## Planning Division, Current

### **Administrative Land Use Decisions Issued**

- Parking area improvements for the office building at 9275 SW Peyton Lane (former Hollywood Video/Convergys building)
- Administrative relief (variance) to lot coverage to allow a 300 square foot addition to a home in Daydream Ranch
- Architectural review of new restroom building and shelters at dog run next to community garden in Memorial Park
- Partition to create a parcel for an additional single-family home along Canyon Creek Road South
- Updated sign placement and design for an industrial building at 29121 SW Kinsman Road
- 1 Other Class I Administrative Review
- 13 Type A Tree Permits
- 1 Type B Tree Permits
- Building permits for commercial/industrial renovations
- Single-family house permits

### **Construction Permit Review, Development Inspections, and Project Management**

In July, Planning staff actively worked with developers and contractors to ensure construction of the following projects are consistent with Development Review Board and City Council approvals:

- DP Nicoli Industrial Development on Boberg Road
- Dutch Bros Coffee kiosk in Town Center
- Fir Avenue Commons residential development in Old Town
- Grace Chapel on Parkway Avenue
- Hilton Garden Inn on Parkway Avenue
- I&E Construction headquarters on Parkway Avenue
- Regional Park 7&8 in Villebois
- Residential subdivisions in Frog Pond West
- Willamette Water Supply Project

### **Development Review Board (DRB)**

DRB Panel A did not meet in July. The next scheduled meeting for Panel A is August 10.

During their July 27 meeting, DRB Panel B unanimously approved a 1-year temporary use permit for a modular classroom building at Lowrie Primary School. The next scheduled meeting for Panel B is August 24.



## Planning Division, Current

### DRB Projects Under Review

During July, Planning staff actively worked on the following major projects in preparation for potential public hearings before the Development Review Board:

- 6-unit residential development in Old Town at the north end of Magnolia Avenue
- 69-lot subdivision in Frog Pond proposed by West Hills Development
- Parkway Woods (former Xerox campus) remodel and additional parking
- Industrial Warehouse on Clutter Road in Coffee Creek Industrial Area (shown right)
- Revisions to outdoor storage area for DP Nicoli on Boberg Road
- Architecture and sign changes for I&E Construction on Parkway Avenue
- Modular classroom building at Lowrie Primary School



## Planning Division, Long Range

### Basalt Creek Planning and Grant Application

During July, Planning staff prepared and submitted a grant application for the State's Transportation and Growth Management (TGM) Program to support the council goal of creating a Basalt Creek Master Plan. The master plan will follow up on the 2018 Basalt Creek Master Plan and set a framework for future industrial development in the Basalt Creek Planning Area. The City Council previously identified application of a form-based code to the Basalt Creek Planning Area as a means to make the area development ready. The focus on multimodal connectivity and the public realm inherent in the development of a form-based code makes this project a strong candidate for funding through the TGM program.

### Frog Pond East and South

This master planning area encompasses the area added to the Urban Growth Boundary by Metro in 2018 (see right). The City is required to adopt a master plan and related policies and codes for the area by the end of 2022. In June, Metro awarded a grant to the City in the amount of \$350,000 to support the project. Staff are working with Metro on the grant agreement, with a plan to begin most portions of the project in early 2021.



## Planning Division, Long Range

### House Bill 2001 Implementation (Middle Housing)

This project will build upon and help implement the Equitable Housing Strategic Plan while ensuring the City complies with House Bill 2001 regarding the allowance for middle housing, including duplexes, triplexes, quadplexes, row houses, and cottage cluster housing. In July, staff requested proposals from consultants to support the project. Staff plan on selecting a consultant in August and having them under contract by mid-September. In the meantime, staff are working on the initial code audit and update. Also, during July staff stayed engaged in the ongoing state rulemaking process, listening to meetings and corresponding with other jurisdictions and interested parties. Staff composed a letter to give input to the state rulemaking committees on the latest iteration of the proposed rules as it relates to Wilsonville.



### House Bill 2003 Implementation (Housing Needs Analysis/Housing Production Strategies)

Planning staff continued to coordinate with DLCD staff on the implementation of House Bill 2003 concerning new Housing Needs Analysis (HNA) timelines and the new requirement to produce a periodic Housing Production Strategy. As Housing Production Strategies are a new requirement, to be completed by a City within a year of completing a HNA, a substantial amount of state administrative rulemaking needs to occur to define the requirements. Staff participated in a sixth meeting of the state's Technical Advisory Committee (TAC) for rulemaking on Housing Production Strategies on July 20 and otherwise stayed engaged in the process.

### Planning Commission

On July 8, the Planning Commission heard an update on Transportation System Plan (TSP) Updates related to the Town Center Master Plan as well as the I-5 Pedestrian Bridge/Town Center Gateway Plaza. For the Town Center TSP update, staff and consultants provided an overview of proposed amendments focusing on planned infrastructure investments in Town Center. For the I-5 Pedestrian Bridge and Town Center Gateway Plaza, the project team provided an update on plaza configurations currently under consideration as well as refined bridge alternatives incorporating prior feedback. The Planning Commission's August meeting has been cancelled; the Commission will meet next on September 9.

### Small Wireless Facility (SWF) Technical Assistance

In July, Planning staff solicited requests for proposal for on-call technical services to support the City in review of applications for small wireless facilities (SWFs) and other wireless infrastructure. The City received three proposals and is currently reviewing them. Having this on-call technical review capacity will help the City regulate this emerging wireless technology and related infrastructure in a technically sound way that addresses safety, aesthetic, and wireless service access concerns while meeting federal regulations. Cost of the technical review will be borne by applicants.

## Planning Division, Long Range

### Wilsonville Town Center Plan



#### *I-5 Pedestrian Bridge*

The Town Center project team continued development of bridge and plaza designs for the I-5 Pedestrian Bridge and Town Center Gateway Plaza project, which will provide an important connection between Town Center, the Wilsonville Transit Center, and neighborhoods west of Interstate 5. In July, the project team held work sessions with the Planning Commission and City Council to present bridge and plaza design configurations and gather preliminary feedback on design elements prior to the project's upcoming public outreach activities. The team refined plans for an online survey on [Let's Talk, Wilsonville!](#) that will be open throughout August, along with an online open house planned for August 13 that will present the bridge and plaza concepts and seek further input on the proposed design elements.

General project information is available on the project website: [www.letstalkwilsonville.com/I5-Ped-Bridge](http://www.letstalkwilsonville.com/I5-Ped-Bridge).



#### *Streetscape Plan*

SERA Architects is the consultant for this project. During July, staff worked with SERA Architects to refine the scope of what to include in the project and finalize the related contract. Staff also watched the I-5 Pedestrian Bridge Project closely as the two projects interrelate. Over the next nine months, the consultant team and City staff will seek input on various design elements that will be included in the final plan document. The Town Center Streetscape Plan is one of the implementation items included in the Town Center Plan and seeks to achieve numerous goals of the broader vision for Town Center. The end product will create a well-designed and implementable palette of street furniture, surface materials, lighting fixtures, and landscaping elements that will reflect the community's aesthetic preferences for Town Center. The final document is intended to provide clear guidelines for streetscapes that will be built as part of private development or capital improvement projects, resulting in a cohesive appearance throughout Town Center.



#### *Transportation System Plan*

During July, the Town Center team continued to update the City's Transportation System Plan (TSP) to integrate the recommended transportation-related infrastructure investments from the Town Center Plan. The team held a work session with the Planning Commission to provide an overview of these proposed amendments to the Wilsonville TSP. The City's on-call traffic consultant, DKS Associates, continued its limited additional analysis of Wilsonville Road as requested by Oregon Department of Transportation (ODOT) to determine the extent of any needed updates to the City's Interchange Area Management Plan (IAMP). Upon conclusion of this work, DKS will finalize the draft updates to the TSP, with adoption anticipated later this year.



# JULY MONTHLY REPORT

## From the Director:

Greetings from the Finance Team!

Happy Fiscal Year 2021! With lots of exciting projects and the implementation of the new financial software system, FY20-21 should be one for the record books.

The accounting team is continuing the year-end process for FY20. Journal entries, in accordance with generally accepted accounting principles will be made throughout the month of September. In September, staff will begin the process of creating the Comprehensive Annual Financial Report (CAFR) that must be completed prior to our annual audit.

The Finance Staff has been working diligently with our MUNIS consultants on the first round of acceptance testing. During this process, each module is reviewed in detail with staff recreating day-to-day activities to ensure the set-up is working properly. City Staff training will begin the end of September and go live is scheduled for November 1.

While doing a review of revenues, our Transit Tax clerk, Amanda Bryant, noticed that Rockwell Collins had not paid transit tax since their sale to another entity last year. After several phone calls and letters to their staff, the issue has been corrected and they will be catching up on their past due payments. It is estimated that an additional \$375K in taxes will be coming in the next couple of weeks for FY2019-20 transit taxes.

Hope everyone is having a safe summer!!

*-Cathy Rodocker*

## By the Numbers:

### Finance Statistics for the period of July 1, 2020-July 31, 2020

Please Note: Utility Billing is reported with a one month lag.

<u>Utility Billing:</u>		<u>Accounts Payable:</u>		<u>Municipal Court:</u>	
Total Monthly Bills	6,785	Invoices Processed	7,421	Total Citations Issued	104
New Customers	92	Payments Processed	4,145	Total Suspensions Issued	0
New Service Locations	5			Ticket Revenue	\$256,042

## **FY21 Financial Update:**

Attached please find the financial reports for the month of July 2020. As many of the revenues are received later in the fiscal year, such as property taxes, franchise fees, etc., the revenues are less than one might expect. Many of the funds rely on the fund balance to cover the expenses until the revenue streams begin to come in.

	Budget	Activity	% Used
<b>Fund 110 General Fund:</b>			
Taxes	11,954,800	248,492	2%
Intergovernmental	2,415,495	21,385	1%
Licenses and Permits	182,750	22,265	12%
Charges for Services	672,610	11,630	2%
Fines	320,000	26,048	8%
Investment Revenue	163,900	6,655	4%
Other Revenues	1,180,350	8,213	1%
Transfers	3,429,047	255,271	7%
<b>Total Revenue</b>	<b>20,318,952</b>	<b>599,959</b>	<b>3%</b>
Personal Services	9,334,432	407,444	4%
Materials and Services	10,186,292	605,580	6%
Capital Outlay	20,000	0	-%
Transfers	5,647,535	120,417	2%
<b>Total Expense</b>	<b>25,188,259</b>	<b>1,133,441</b>	<b>4%</b>
<b>Fund 210 Fleet Fund:</b>			
Charges for Services	1,411,703	117,678	8%
Investment Revenue	9,600	0	-%
Other Revenues	18,000	0	-%
<b>Total Revenue</b>	<b>1,439,303</b>	<b>117,678</b>	<b>8%</b>
Personal Services	788,700	29,117	4%
Materials and Services	676,906	23,010	3%
Capital Outlay	65,000	0	-%
Transfers	2,400	200	8%
<b>Total Expense</b>	<b>1,533,006</b>	<b>52,326</b>	<b>3%</b>
<b>Fund 230 Building Fund:</b>			
Licenses and Permits	877,190	51,488	6%
Licenses and Permits-Villebois	73,375	13,073	18%
Charges for Services	9,600	800	8%
Investment Revenue	22,800	11,886	52%
Transfers	40,883	3,407	8%
<b>Total Revenue</b>	<b>1,023,848</b>	<b>80,654</b>	<b>8%</b>
Personal Services	1,081,750	45,048	4%
Materials and Services	165,347	52,067	31%
Transfers	405,321	25,444	6%
<b>Total Expense</b>	<b>1,652,418</b>	<b>122,559</b>	<b>7%</b>
<b>Fund 235 Community Development Fund:</b>			
Intergovernmental	63,000	0	-%
Licenses and Permits	689,983	24,530	4%
Licenses and Permits-Villebois	11,740	4,332	37%
Charges for Services	607,450	40,763	7%
Investment Revenue	12,500	3,920	31%
Other Revenues	250	0	-%
Transfers	2,862,264	151,123	5%
<b>Total Revenue</b>	<b>4,247,187</b>	<b>224,668</b>	<b>5%</b>
Personal Services	3,215,620	132,123	4%
Materials and Services	712,625	15,606	2%
Transfers	584,243	48,687	8%
<b>Total Expense</b>	<b>4,512,488</b>	<b>196,416</b>	<b>4%</b>
<b>Fund 240 Road Operating Fund:</b>			
Intergovernmental	2,382,151	0	-%
Investment Revenue	2,000	0	-%
Other Revenues	2,000	162	8%
<b>Total Revenue</b>	<b>2,386,151</b>	<b>162</b>	<b>0%</b>
Personal Services	382,270	12,455	3%
Materials and Services	514,578	9,149	2%
Debt Service	82,000	0	-%
Transfers	1,525,765	19,025	1%
<b>Total Expense</b>	<b>2,504,613</b>	<b>40,629</b>	<b>2%</b>

	Budget	Activity	% Used
<b>Fund 245 Road Maintenance Fund:</b>			
Charges for Services	2,065,000	172,910	8%
Investment Revenue	3,100	7,840	253%
<b>Total Revenue</b>	<b>2,068,100</b>	<b>180,750</b>	<b>9%</b>
Transfers	3,458,278	0	-%
<b>Total Expense</b>	<b>3,458,278</b>	<b>0</b>	<b>0%</b>
<b>Fund 260 Transit Fund:</b>			
Taxes	5,050,000	564,113	11%
Intergovernmental	5,296,588	32,028	1%
Charges for Services	170,000	0	-%
Investment Revenue	36,100	8,574	24%
Other Revenues	16,000	0	-%
<b>Total Revenue</b>	<b>10,568,688</b>	<b>604,715</b>	<b>6%</b>
Personal Services	4,106,110	157,094	4%
Materials and Services	2,268,268	138,010	6%
Capital Outlay	2,629,941	55,419	2%
Transfers	721,421	49,531	7%
<b>Total Expense</b>	<b>9,725,740</b>	<b>400,054</b>	<b>4%</b>
<b>Fund 310 Water Operating Fund:</b>			
Charges for Services	9,006,000	728,278	8%
Fines	19,000	0	-%
Investment Revenue	195,000	5,780	3%
Other Revenues	195,270	1,000	1%
<b>Total Revenue</b>	<b>9,415,270</b>	<b>735,058</b>	<b>8%</b>
Personal Services	615,190	24,114	4%
Materials and Services	4,405,491	58,583	1%
Capital Outlay	426,000	0	-%
Transfers	3,979,914	58,643	1%
<b>Total Expense</b>	<b>9,426,595</b>	<b>141,340</b>	<b>1%</b>
<b>Fund 320 Sewer Operating Fund:</b>			
Charges for Services	8,147,000	633,090	8%
Investment Revenue	196,200	5,058	3%
Other Revenues	18,000	0	-%
Transfers	600,000	0	-%
<b>Total Revenue</b>	<b>8,961,200</b>	<b>638,148</b>	<b>7%</b>
Personal Services	365,500	15,009	4%
Materials and Services	3,577,813	41,297	1%
Debt Service	2,960,000	0	-%
Transfers	3,863,718	44,485	1%
<b>Total Expense</b>	<b>10,767,031</b>	<b>100,791</b>	<b>1%</b>
<b>Fund 350 Street Lighting Fund:</b>			
Charges for Services	524,150	44,024	8%
Investment Revenue	12,500	0	-%
<b>Total Revenue</b>	<b>536,650</b>	<b>44,024</b>	<b>8%</b>
Materials and Services	381,320	28,154	7%
Transfers	1,088,820	0	-%
<b>Total Expense</b>	<b>1,470,140</b>	<b>28,154</b>	<b>2%</b>
<b>Fund 370 Storm Water Operating Fund:</b>			
Charges for Services	3,370,000	274,443	8%
Investment Revenue	15,300	0	-%
Transfers	2,500,000	0	-%
<b>Total Revenue</b>	<b>5,885,300</b>	<b>274,443</b>	<b>5%</b>
Personal Services	270,080	11,112	4%
Materials and Services	782,453	6,673	1%
Debt Service	679,200	0	-%
Transfers	2,849,969	43,369	2%
<b>Total Expense</b>	<b>4,581,702</b>	<b>61,154</b>	<b>1%</b>



JULY 2020

# MONTHLY REPORT

## From the Director

What a whirlwind July was!

The Summer Reading Program (SRP) continued. Over two hundred library users across all ages registered accounts with Beanstack, the SRP online app, while many participants chose to submit their completed reading and science logs on paper and via email. The response from participants has been positive, with many thanking the library for continuing to hold the SRP, including one consistent comment: "It's a great time to read!"

Our virtual programs continued with their emphasis on "Imagine Your Story," this summer's SRP theme. "Stories & Science" was live on Zoom and Facebook and featured a science demonstration in addition to stories and songs. Weekly Teen virtual events continued with an added "writing prompt" component each week as part of the SRP theme "Imagine Your Story". For adults, monthly programs Article Club, Book Club, and History Pub continued, and a new virtual biography presentation series by popular instructor Dr. Bill Thierfelder started in July, which focused on Vincent Van Gogh and Bayard Rustin.

As we adapted to re-entry and the requirements for it, we found that we were able to provide some additional services while maintaining the health and safety measures set out by the Oregon Health Authority, the Governor's office, and Wilsonville's Emergency Operations Center (EOC). As of July 21, "Book Bundles to Go" became available for patrons to check out. These bundles contain 3-5 books or DVDs on a variety of topics (e.g. "Thrillers," "Fairy Tales for Grown-Ups," and "For the Love of Dogs"), with bundles created specifically for children, teens, and adults.

For citizens who are looking for different topics, we offer a concierge service where library staff will curate and collect items that fit the citizen's request and bring the items for the citizen to check out. These reader's advisory services have proved quite popular, with many citizens complimenting staff on their helpfulness. Additional services will be phased in as soon as we can provide them safely. Curbside hands-free pickup continues on Wednesdays from 11am-1pm.

As an outreach effort and with the support of the Wilsonville Public Library Foundation, the library purchased six Chromebooks for citizens to check out. Three of the Chromebooks will also come with mobile internet hotspots. The Chromebooks are currently being tested and should be available to the public in August.

*-Pat Duke, Library Director*



# JULY 2020 Monthly Report



## From the Director's Desk:

While we all live in a current environment that no one is accustomed to, your Parks and Recreation Team continues to offer as many activities as possible, while following the Governor's rules requiring social distancing, the wearing of masks, etc.

Fortunately, we are able to offer some activities and open spaces to recreate. As they have been during the Covid-19 pandemic, all parks are open to the public. The City's Disc Golf Course, the off-leash Dog Park, Memorial Park Skate Park, Tennis Court and Pickle-ball Courts, Summer Camps and our Administrative Office area are all available and open.

Unfortunately, playgrounds, basketball and volleyball courts, water features and sports fields (for organized practices and games) remain closed.

Recreation Coordinator, Erica Behler continues to offer activities that are always highlighted on the department's website, facebook and Instagram.

Fitness Instructor, Brad Moore has started offering his in person, personal training as well as his popular weight loss support group. The Community Center remains closed to the public, but staff remain busy as ever, cooking and delivering approximately 450 meals per week.

The amazing parks crew is busy putting the finishing touches on the new Dog Park (located in Memorial Park adjacent to the Community Garden). This project has been delayed due to Covid-19 related situations, however it is slated to be open this September. The crew also oversaw the installation of new playground equipment this month, located at the Park at Merryfield. Hopefully youngsters will be able to enjoy this area in the near future during Phase II of the states' reopening.

Your entire Parks and Recreation staff continues to work hard for the community and thoroughly enjoy being a part of this wonderful city.

Be well, and play safe.

- Mike McCarty



### Community Center Updates:

- Prepared for and hosted the Korean War Armistice Day ceremony at Town Center Park
- Continued to let our older adults know we miss them with encouraging artwork near the front door as well as a big “we miss you” on the walkway that connects the Community Center and Creekside Woods
- Began offering a limited number of programs in person including the weight loss support group and individual personal training
- Staff has continued to work with the Korean War Memorial Foundation of Oregon (KWMFO) on implementing an Oregon Korean War Interpretive Center at the Parks and Recreation Admin Building. A donation agreement has been finalized that will help to facilitate the donation of artifacts to the KWMFO, and ultimately the City. Additionally, general concepts for the Interpretive Center have been discussed including an interactive educational component designed to appeal to a younger audience as well as historical information highlighting Oregon Veterans and those in the Korean community.





### Wilsonville Team Colors Contest:

The department hosted a friendly little virtual competition this month called the “Wilsonville Team Colors” contest. Participants were asked to send in a picture the week of July 27 with an image of them or their family, pet, etc.. in their favorite sports team attire. They either used the hashtag #WilsonvilleTeamColors on social media or emailed a picture to the Recreation Coordinator. The competition lasted for one week and winners were chosen at random and announced on Monday, August 3 for their prize of a 32oz. Hydroflask water bottle. Pictured above are the two winners Ericka K. and Naomi N. with their families.

### Upcoming ‘Chalk the Park’ series:

August will see a series of four Chalk the Park events throughout Wilsonville City Parks. They will all take place on Thursday’s from 10 am to noon. The schedule is as follows:

August 6th– Town Center Park

August 13th– Murase Plaza

August 20th– Courtside Park

August 27th– Palermo Park

Messaging to participants has been; “Simply come to the park, grab a pack of chalk and create your masterpiece!

Each family will get their own set of chalk to take home.

Please be sure to wear a mask. Cones will be set up throughout the park to indicate drawing stations. Friendly Parks and Rec staff will be on site to ensure social distancing, play some rockin’ tunes and answer any questions you may have about our parks and programs. While you’re at the event, enter you name and email for a chance to win the coveted parks and rec picnic blanket shown above! Children 12 and under must be accompanied by an adult or older sibling.”



## Parks Maintenance Updates:

- Installed new irrigation on dog park site
- New compost collection area for community garden
- Moved picnic tables to allow for social distancing
- Poured concrete entries and pads at dog park site
- Fixed financing at playgrounds
- Oversaw installation of playground equipment at Park at Merryfield















# What's Open?

Wilsonville parks and trails remain open,  
with some amenities unavailable.

- Administrative Office** ●●●●●●●● **Open**
- Basketball & Volleyball Courts** ●●● **Closed Until Further Notice**
- Community Center** ●●●●●●●● **Building Closed Until Further Notice; Medical Equip. Loan Program Unavailable; Home Delivered Meals and Social Services Are Available.**
- Disc Golf Course** ●●●●●●●●●● **Open**
- Off-Leash Dog Park** ●●●●●●●●●● **Open**
- Park Shelters** ●●●●●●●●●●●● **Drop-In Use Only (50 Max.)**
- Playgrounds** ●●●●●●●●●●●●●● **Closed Until Further Notice**
- Memorial Park Skate Park** ●●●●● **Open**
- Sport Fields** ●●●●●●●●●●●●●●●● **Drop-In Use Only (No Organized Practices/Games)**
- Summer Camps** ●●●●●●●●●●●●●● **Open**
- Tennis & Pickleball Courts** ●●●●● **Open**
- Water Features** ●●●●●●●●●●●●●● **Closed For The Season**

For a full list of City closures and cancellations, please visit [ci.wilsonville.or.us/covid-19](https://ci.wilsonville.or.us/covid-19)

## Check us Out on Social Media!



Wilsonville Parks and Rec.



@wvparcsandrec

# WILSONVILLE MONTHLY ACTIVITY REPORT July 2020



CITY OF WILSONVILLE POLICE DEPARTMENT  
30000 SW Town Center Loop  
Wilsonville, OR 97070

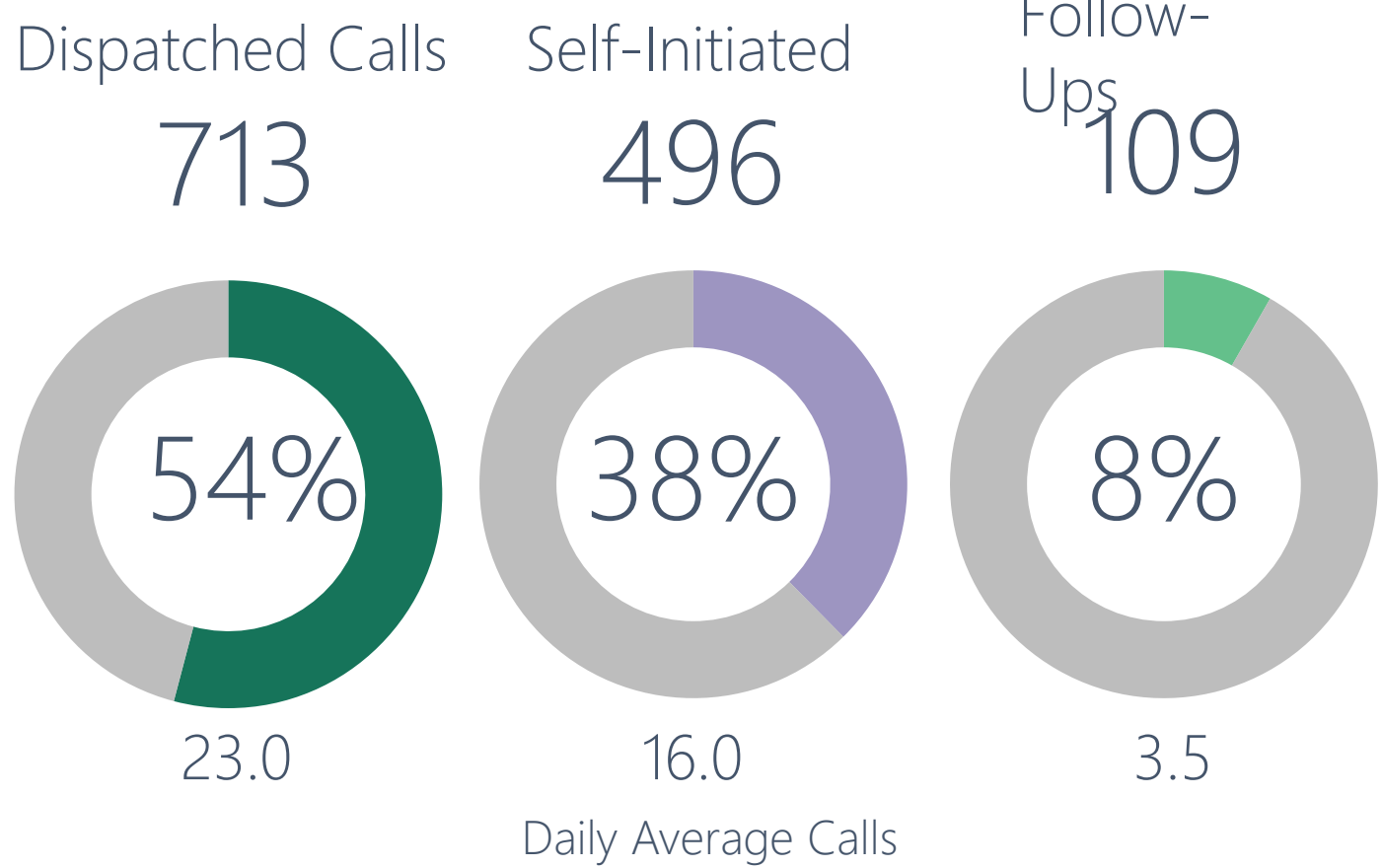


In Partnership with

**Clackamas County  
Sheriff's Office**

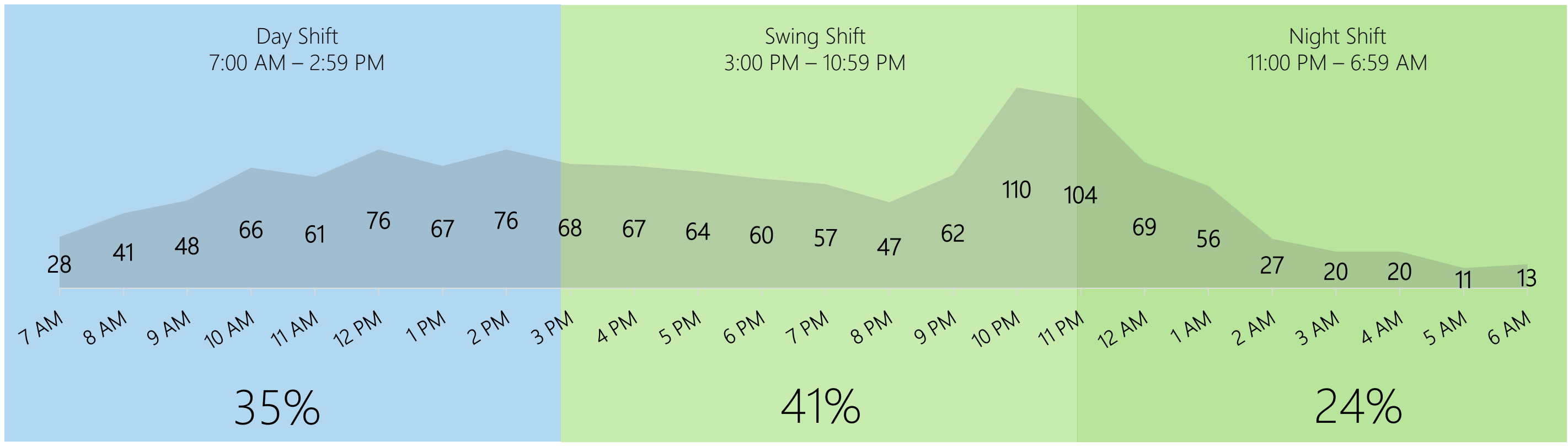
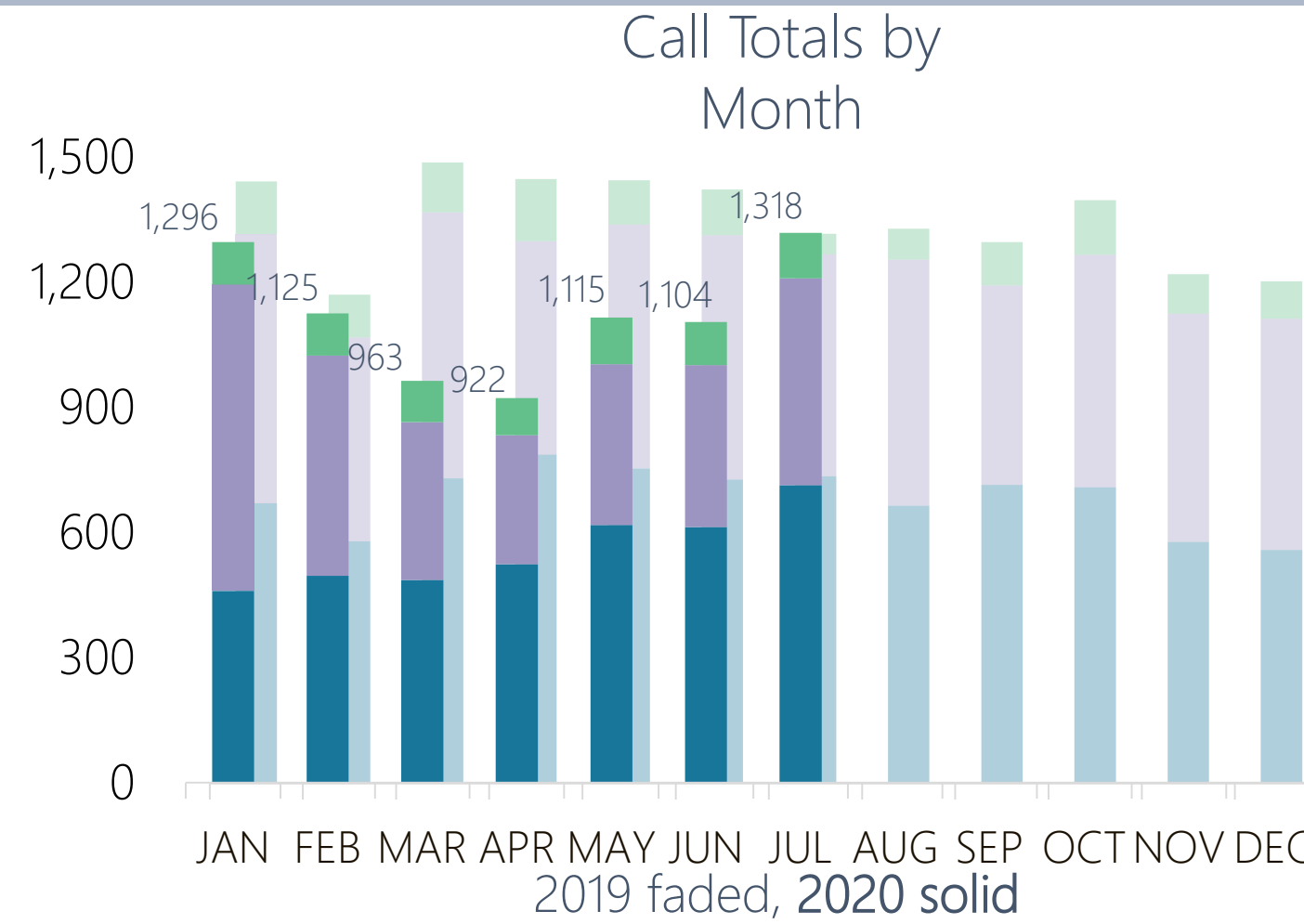
# LE Calls for Service in the City of Wilsonville – Totals & Median Response Times

July 2020

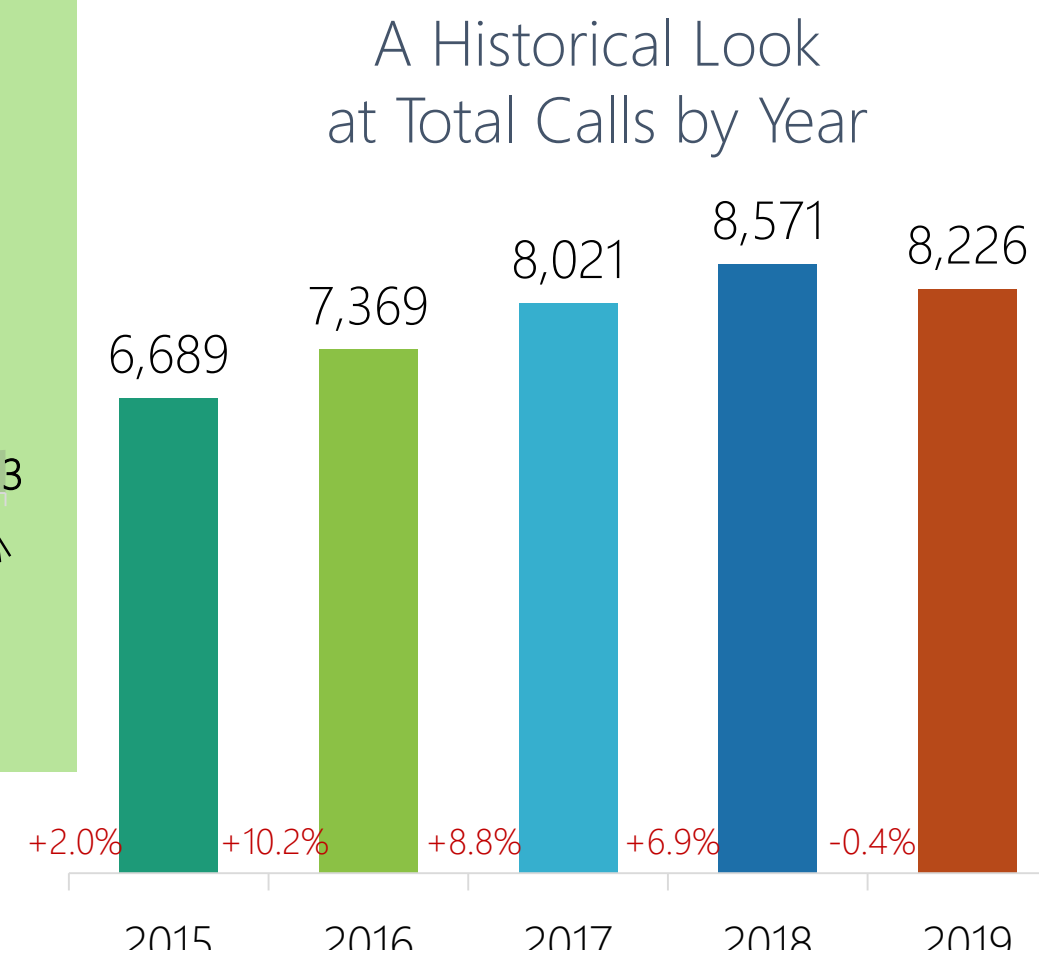


Median Hold & Response Times

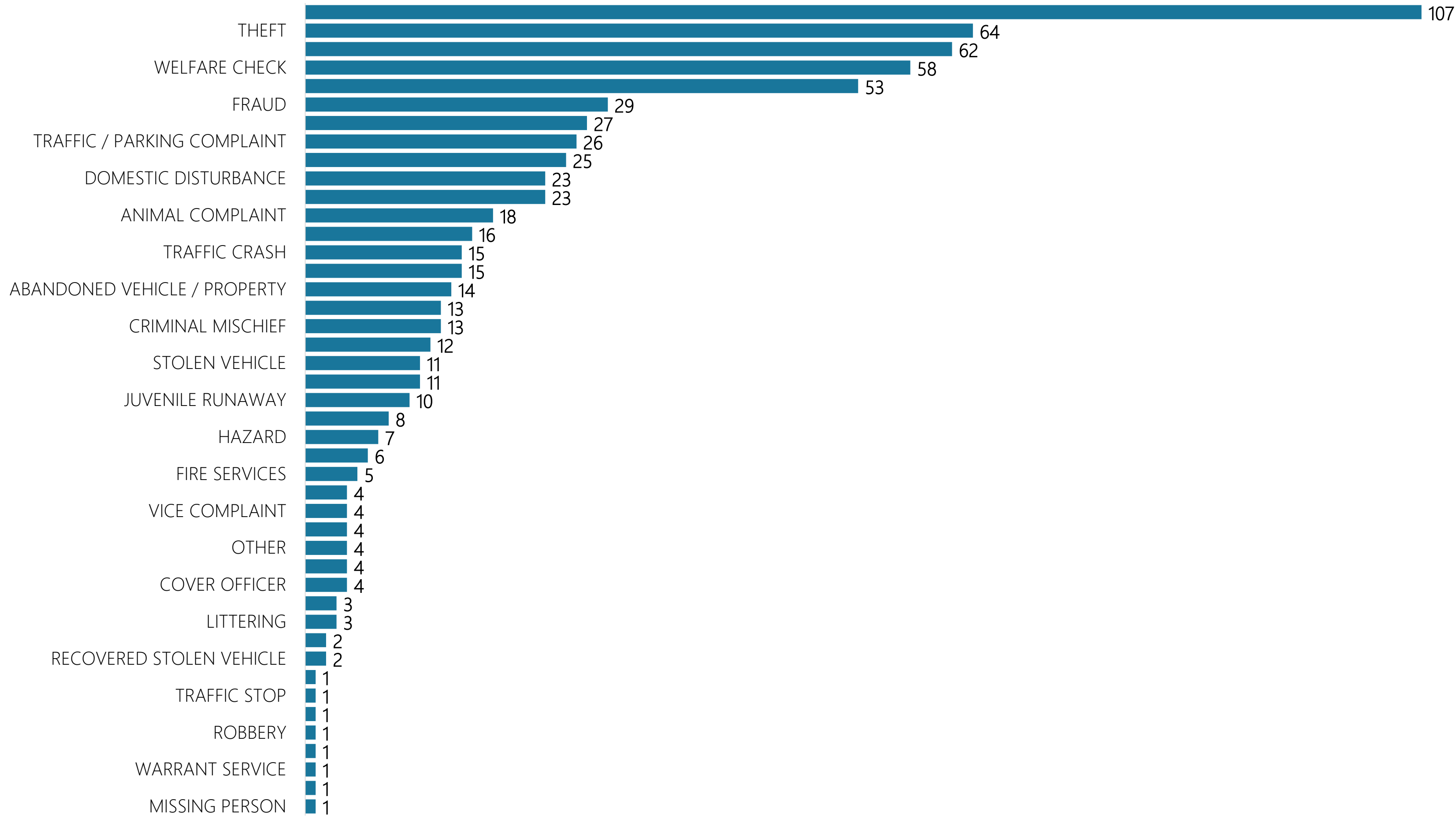
	All Calls	Priority 1 & 2 Calls
Input to Dispatch (Hold Duration)	1:21	:56
Dispatch to Arrival (Response Duration)	3:34	4:10



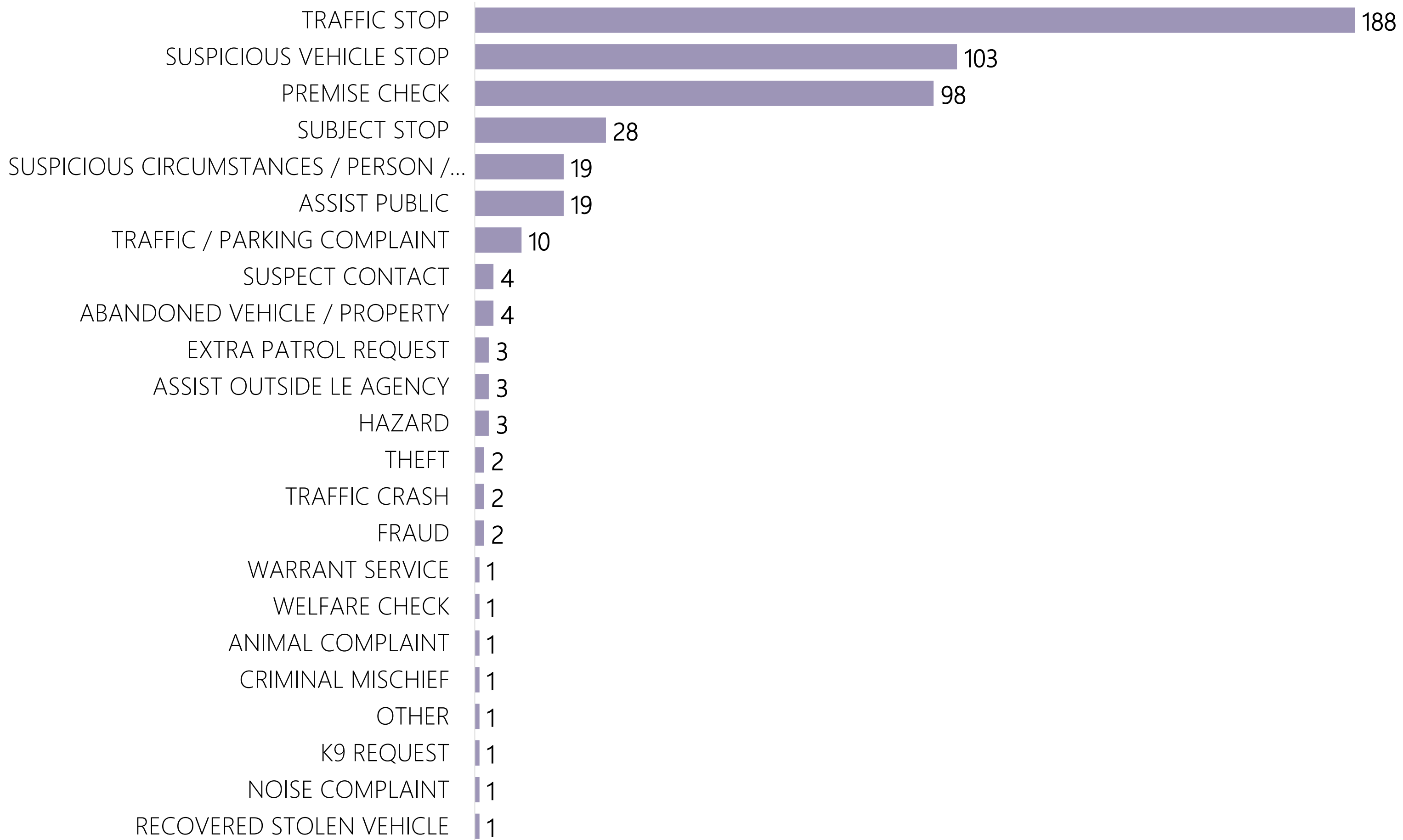
Dispatched Calls for Service Breakdown by Hour of Day & Shift Time Groupings  
(not actual breakdown of Wilsonville PD shift schedules)



Dispatched Call Types



Self-Initiated Call Types



DISPATCHED CALL TYPE	Jan	Feb	Mar	Apr	May	Jun	Jul	Aug	Sep	Oct	Nov	Dec	2020 Monthly Trend Line
ABANDONED VEHICLE / PROPERTY	14	10	11	17	11	18	14						
ALARM	38	48	52	40	0	47	53						
ANIMAL COMPLAINT	3	4	4	3	0	12	18						
ASSAULT	6	5	4	4	0	4	4						
ASSIST OUTSIDE LE AGENCY	8	3	18	3	0	6	8						
ASSIST PUBLIC	24	32	36	28	9	43	62						
BEHAVIORAL HEALTH INCIDENT	7	24	18	8	0	16	25						
BURGLARY	8	7	7	1	0	5	3						
COVER OFFICER	6	1	0	0	1	1	4						
CRIMINAL MISCHIEF	7	7	5	10	16	21	13						
DEATH INVESTIGATION	0	4	1	0	3	4	2						
DUII	6	10	3	3	5	1	4						
EXTRA PATROL REQUEST	2	1	0	1	0	0	0						
FIRE SERVICES	6	7	8	3	0	7	5						
FRAUD	16	19	16	21	19	18	29						
HAZARD	3	7	3	6	4	4	7						
HIT & RUN	8	11	10	13	12	9	15						
JUVENILE RELATED	18	17	15	13	12	16	12						
JUVENILE RUNAWAY	0	0	8	4	3	8	10						
LITTERING	1	3	0	0	1	1	3						
MARINE PATROL	0	1	0	1	0	0	0						
MENACING	1	0	0	1	0	0	0						
MINOR IN POSSESSION	6	2	4	1	1	1	1						
MISSING PERSON	5	5	6	5	5	6	1						
NOISE COMPLAINT	10	9	17	16	20	21	16						
OTHER	0	2	1	5	2	2	4						

(List part 1 of 2)

DISPATCHED CALL TYPE	Jan	Feb	Mar	Apr	May	Jun	Jul	Aug	Sep	Oct	Nov	Dec	2020 Monthly Trend Line
OVERDOSE	1	0	0	0	0	2	1						
PREMISE CHECK	1	1	0	4	1	0	0						
PROMISCUOUS SHOOTING	1	0	2	3	1	0	0						
PROWLER	0	1	2	0	1	1	1						
PURSUIT	0	0	0	1	0	0	0						
RECOVERED STOLEN VEHICLE	1	1	2	2	5	3	2						
SEX CRIMES	4	0	2	3	1	0	4						
STOLEN VEHICLE	1	8	9	9	17	8	11						
SUBJECT STOP	0	0	0	0	1	0	0						
SUICIDE THREAT / ATTEMPT	3	16	8	14	8	10	11						
SUSPECT CONTACT	1	0	0	3	4	3	1						
SUSPICIOUS CIRCUMSTANCES / PERSON / VEHICLE	71	69	55	57	95	87	107						
SUSPICIOUS VEHICLE STOP	2	0	0	0	0	0	0						
THEFT	47	40	36	75	66	51	64						
THREAT/HARASSMENT	15	19	20	29	22	33	23						
TRAFFIC / PARKING COMPLAINT	13	11	9	25	19	18	26						
TRAFFIC CRASH	11	13	11	6	8	13	15						
TRAFFIC STOP	1	0	0	0	0	0	1						
UNWANTED / TRESPASS	19	17	13	20	22	23	27						
VICE COMPLAINT	3	7	4	1	2	7	4						
VIOL. RESTRAINING ORDER	1	1	1	5	6	2	6						
WARRANT SERVICE	2	1	1	0	2	0	1						
WELFARE CHECK	32	26	24	28	40	40	58						
DISTURBANCE	11	7	8	11	7	6	13						
DOMESTIC DISTURBANCE	16	19	32	21	31	36	23						
ROBBERY	0	0	0	0	1	1	1						
<b>Grand Total</b>	<b>460</b>	<b>496</b>	<b>486</b>	<b>524</b>	<b>484</b>	<b>615</b>	<b>713</b>						

(List part 2 of 2)

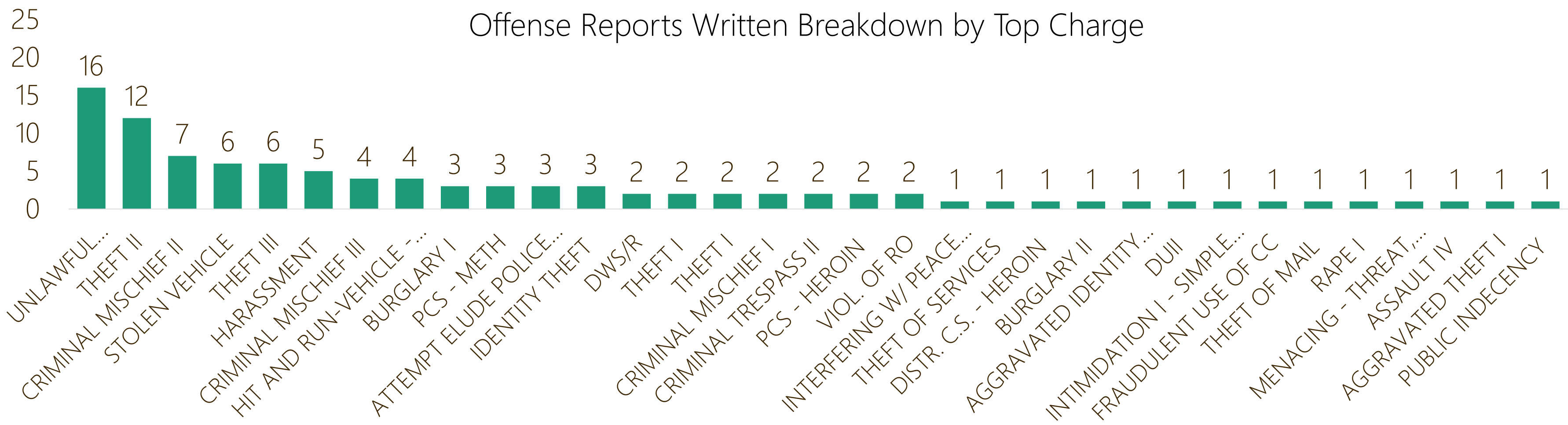
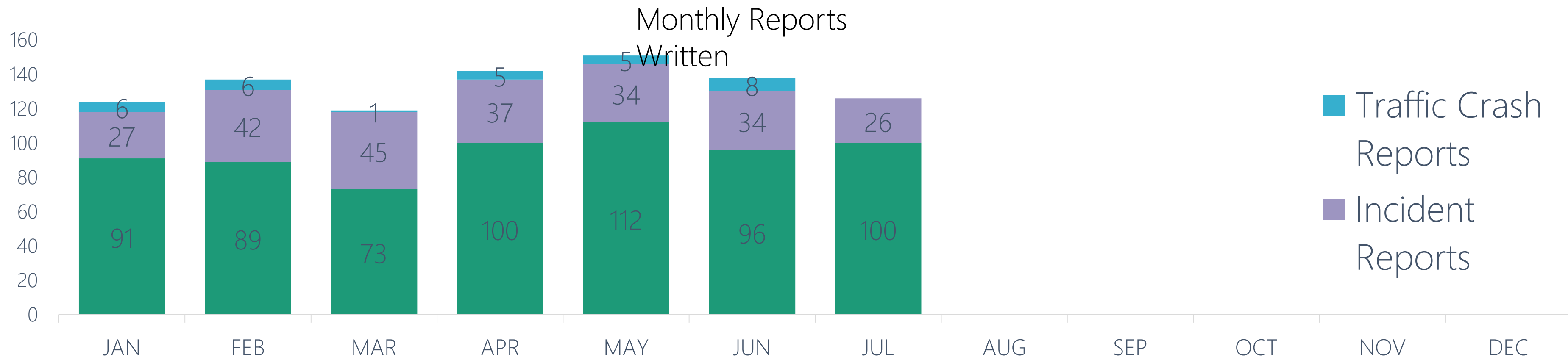
SELF-INITIATED CALL TYPE	Jan	Feb	Mar	Apr	May	Jun	Jul	Aug	Sep	Oct	Nov	Dec	2020 Monthly Trend Line
ABANDONED VEHICLE / PROPERTY	1	8	5	7	1	1	4						
ALARM	1	0	0	0	0	0	0						
ANIMAL COMPLAINT	0	1	0	2	0	0	1						
ASSAULT	1	0	0	0	0	0	0						
ASSIST OUTSIDE LE AGENCY	7	1	2	3	0	4	3						
ASSIST PUBLIC	22	17	16	22	8	26	19						
CRIMINAL MISCHIEF	6	2	0	0	1	0	1						
DUII	0	0	1	0	0	0	0						
EXTRA PATROL REQUEST	15	9	0	3	4	2	3						
FIRE SERVICES	1	0	0	1	0	0	0						
FRAUD	2	2	1	0	0	2	2						
HAZARD	2	0	3	1	0	1	3						
HIT & RUN	0	1	2	1	0	0	0						
JUVENILE RELATED	1	1	2	0	0	0	0						
MINOR IN POSSESSION	3	2	0	0	0	0	0						
NOISE COMPLAINT	0	0	0	0	0	0	1						
OTHER	1	0	4	5	2	5	1						
PREMISE CHECK	99	57	83	88	55	99	98						
PURSUIT	1	1	0	1	0	0	0						

(List part 1 of 2)



SELF-INITIATED CALL TYPE	Jan	Feb	Mar	Apr	May	Jun	Jul	Aug	Sep	Oct	Nov	Dec	2020 Monthly Trend Line
RECOVERED STOLEN VEHICLE	1	1	1	4	2	0	1						
SEX CRIMES	0	0	3	0	0	1	0						
STOLEN VEHICLE	0	0	0	0	1	1	0						
SUBJECT STOP	30	19	12	19	22	34	28						
SUICIDE THREAT / ATTEMPT	0	0	0	0	1	0	0						
SUSPECT CONTACT	3	4	5	5	1	3	4						
SUSPICIOUS CIRCUMSTANCES / PERSON / VEHICLE	8	4	5	18	21	10	19						
SUSPICIOUS VEHICLE STOP	84	62	52	60	51	58	103						
THEFT	5	2	1	2	2	3	2						
THREAT/HARASSMENT	1	0	2	1	0	0	0						
TRAFFIC / PARKING COMPLAINT	24	17	10	8	11	9	10						
TRAFFIC CRASH	4	3	1	1	1	1	2						
TRAFFIC STOP	402	308	161	53	183	122	188						
UNWANTED / TRESPASS	0	1	0	2	1	1	0						
VICE COMPLAINT	0	0	0	1	0	0	0						
WARRANT SERVICE	9	2	3	1	0	3	1						
WELFARE CHECK	1	2	2	0	1	3	1						
K9 REQUEST	0	0	1	0	1	0	1						
DISTURBANCE	0	1	0	0	0	0	0						
<b>Grand Total</b>	<b>735</b>	<b>528</b>	<b>378</b>	<b>309</b>	<b>370</b>	<b>389</b>	<b>496</b>						

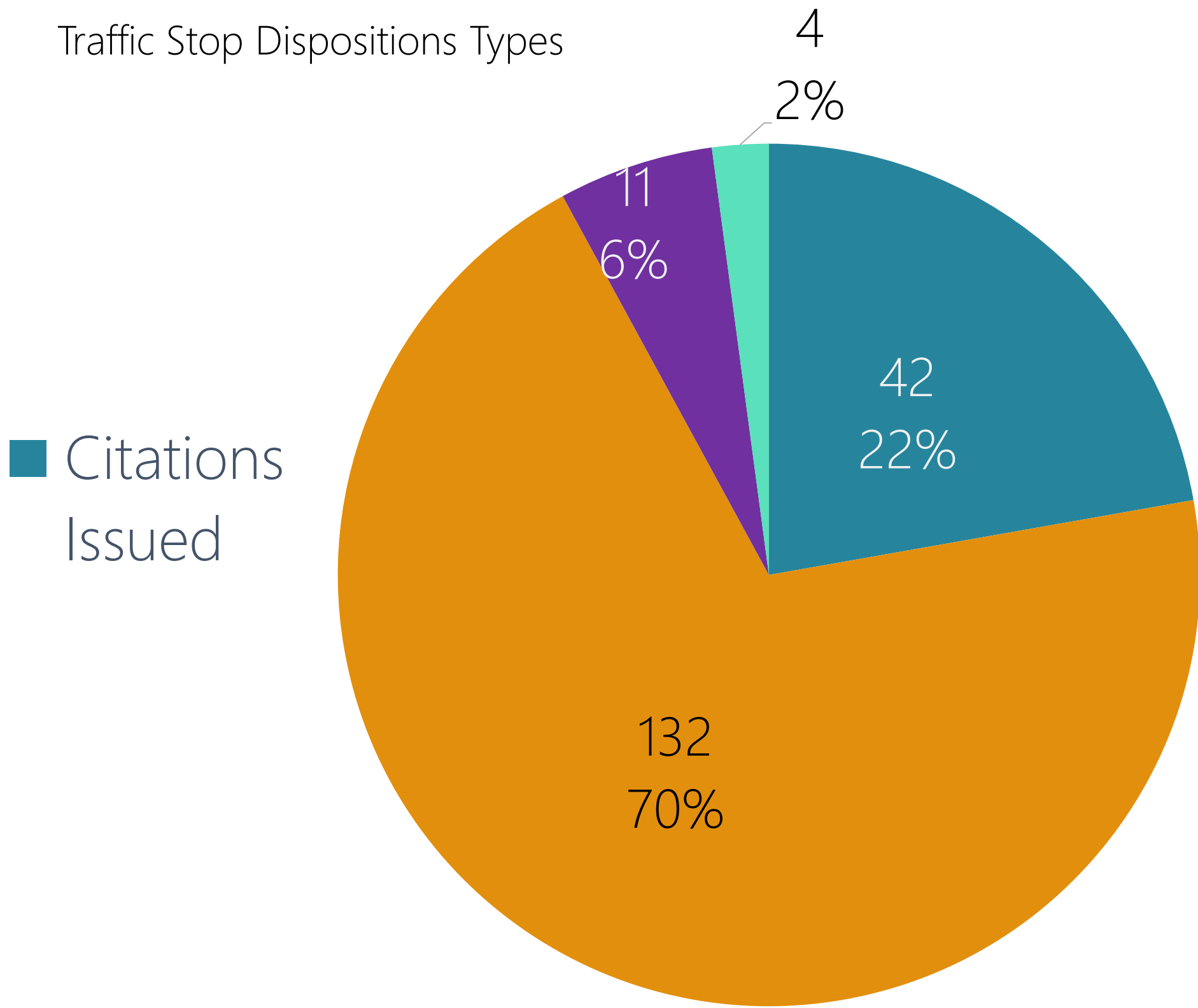
(List part 2 of 2)



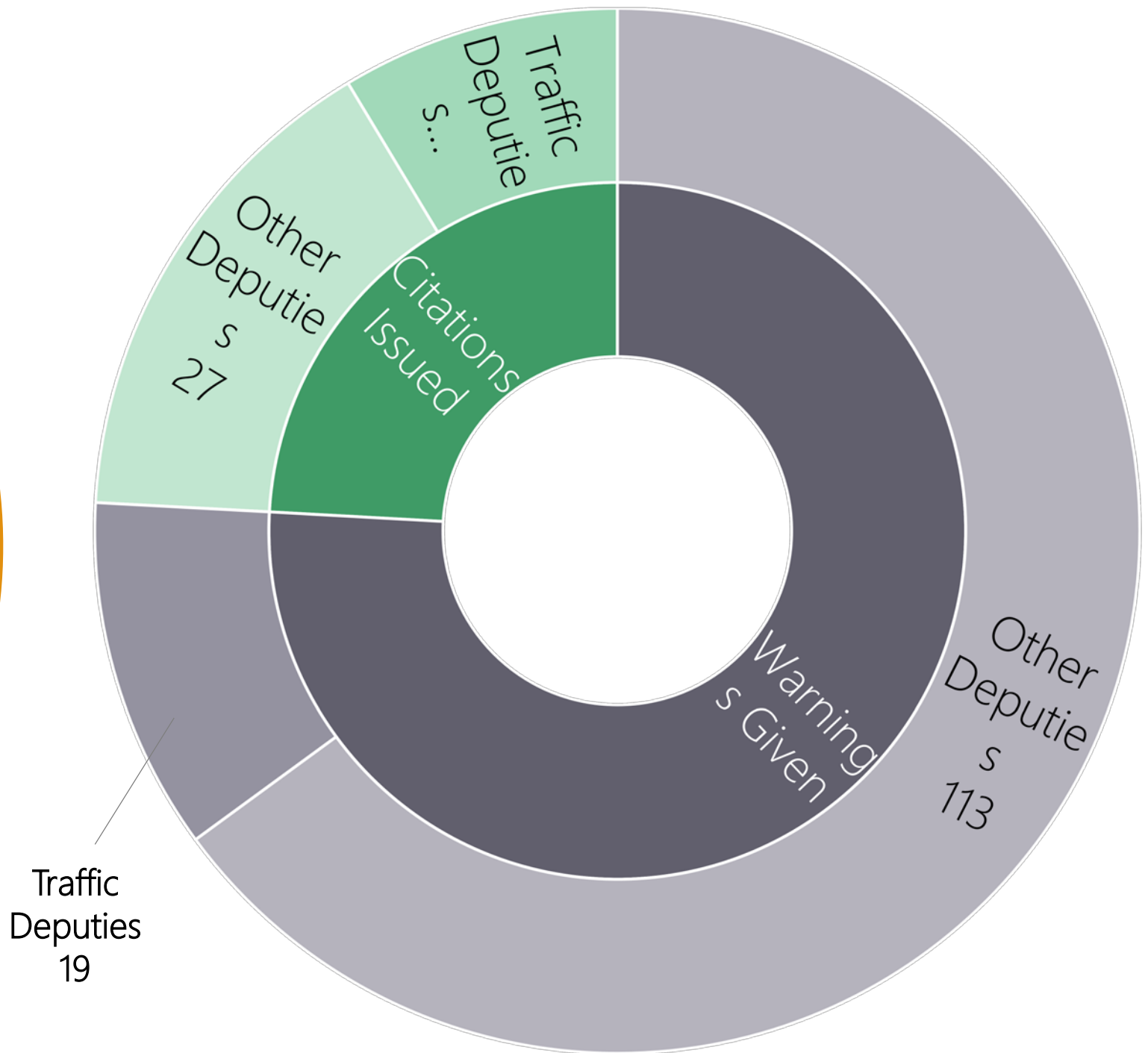
Traffic Stop Dispositions

In July 2020, **189** traffic stops were made within the city limits, resulting in **42** citations issued, **132** warnings given, and **11** offense/incident reports created. Of the **42** citations issued, **78** charges were included (see next slide).

Traffic Stop Dispositions Types

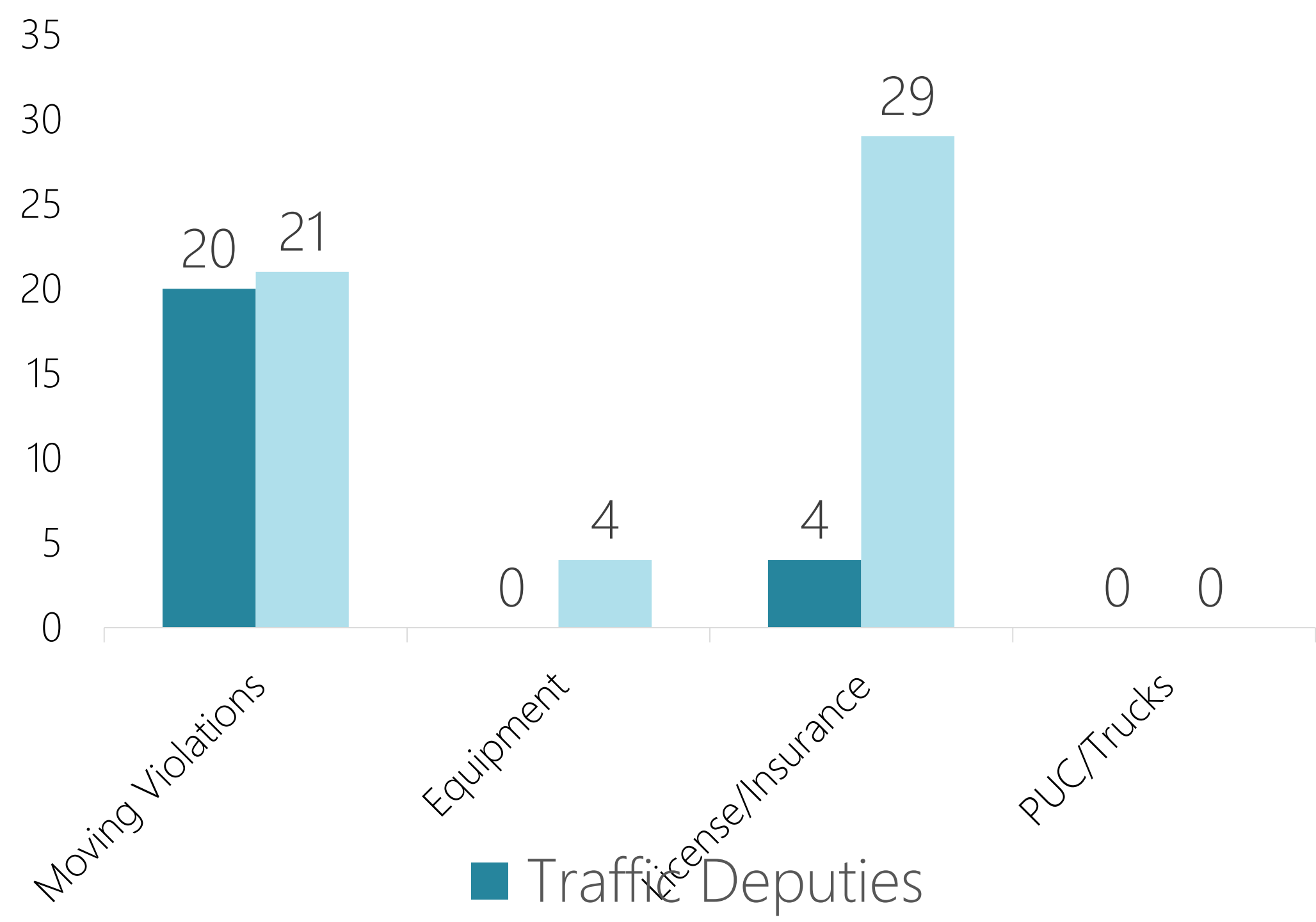


Warnings & Citations Issued Broken Down by Deputy Type

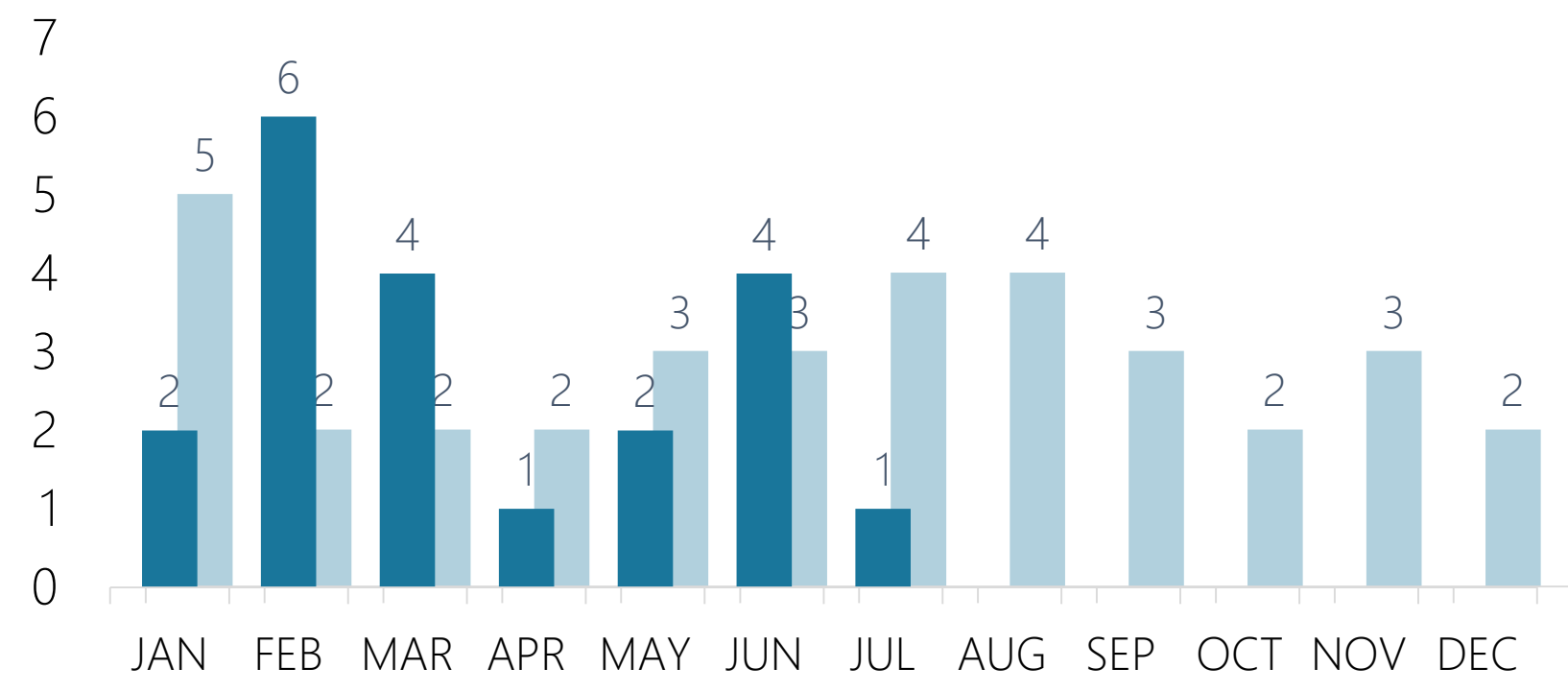


Citation Types Issued:

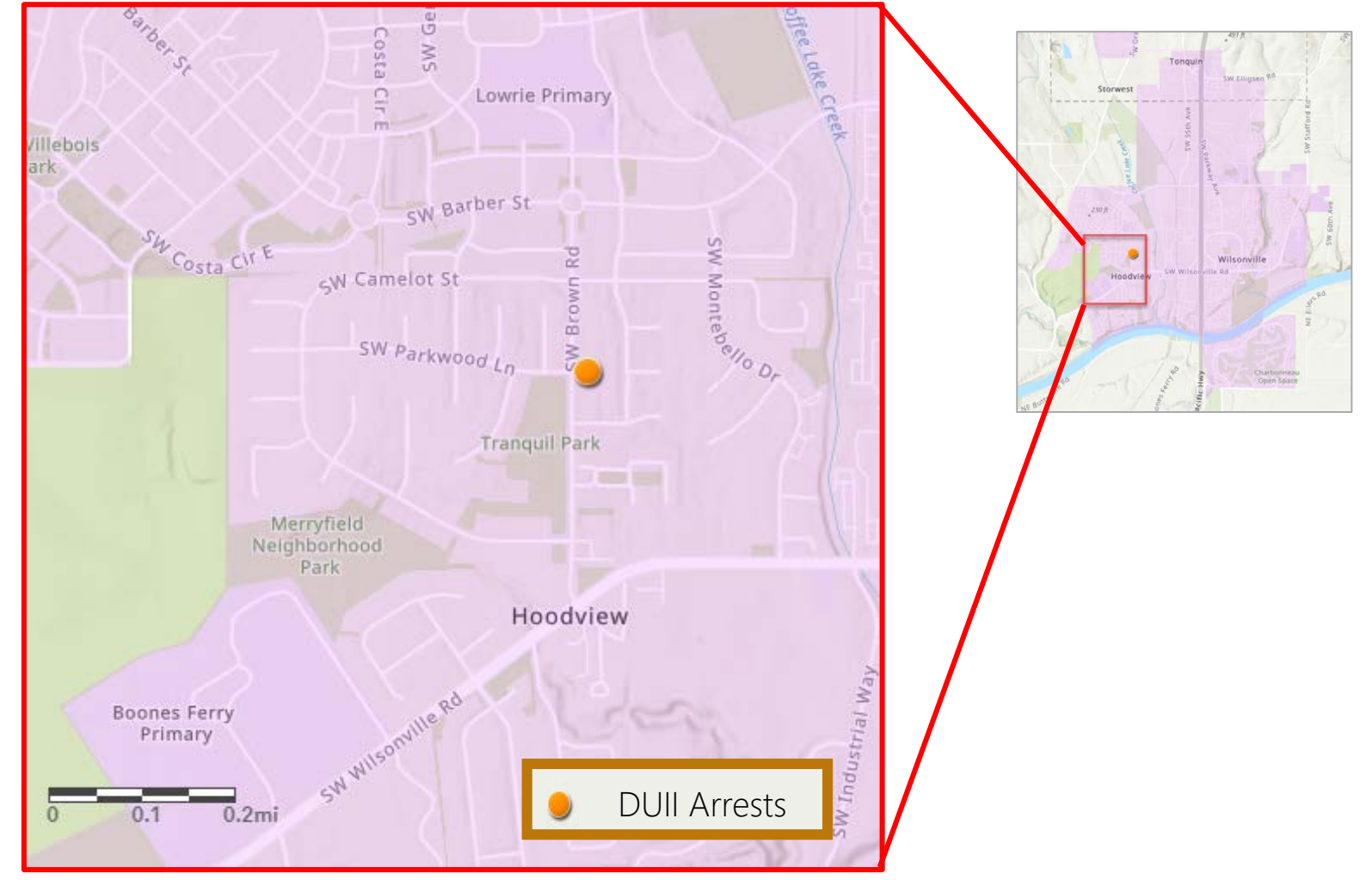
Of the **42** citations issued, **78** charges were included in the following types:



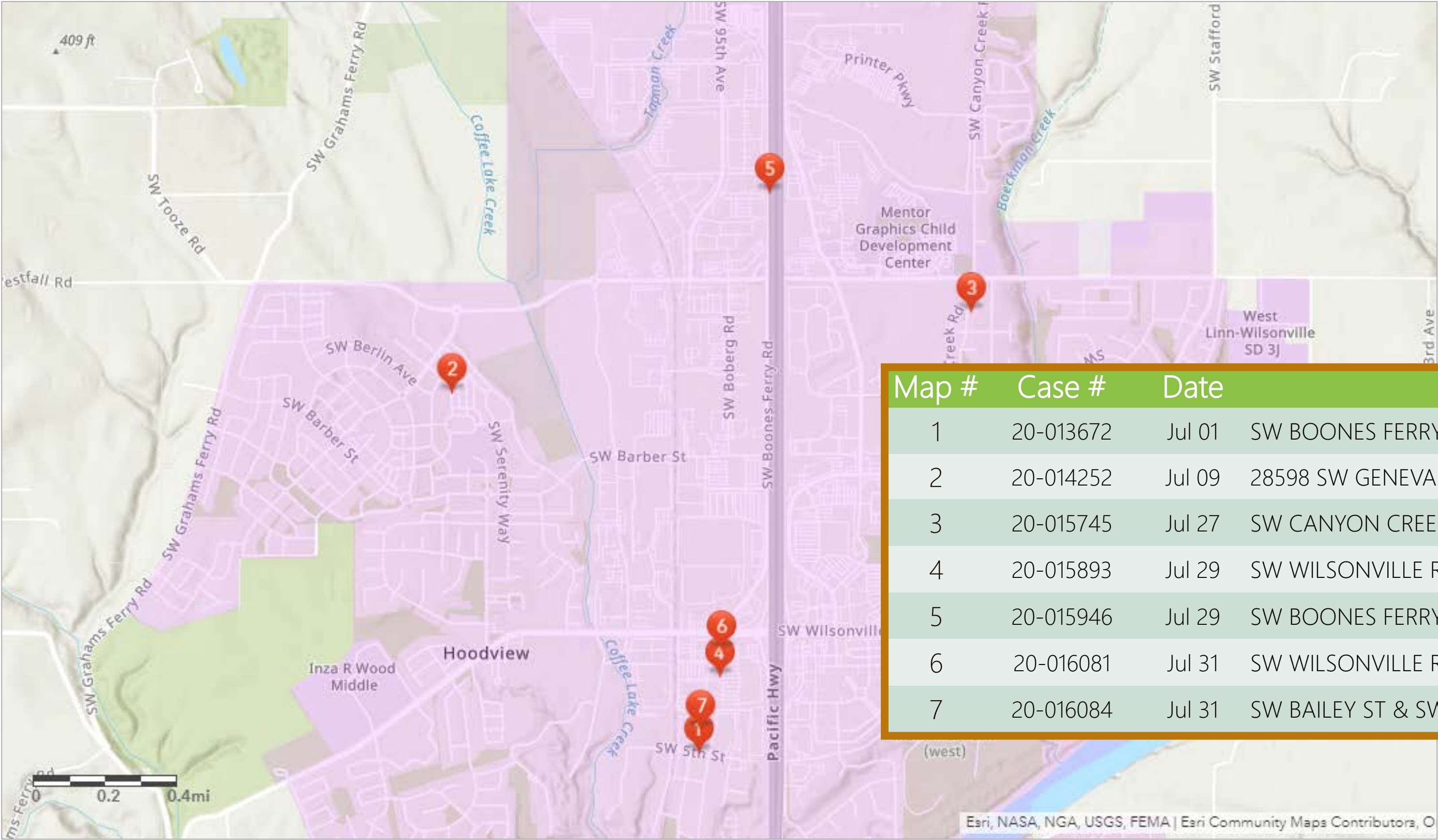
DUII Arrests:



2019 faded, 2020 solid



Map of Traffic Crash Reports



**From The Director's Office:**

Construction of the Raw Water Facility project (RWF\_1.0) at the Willamette Water Treatment Plant is underway. The safety of workers and the public is a high priority for the project team. Thus the first order of business was the installation of construction fencing around the work site and installation of construction signage.

Safety actions for the RWF\_1.0 project includes reviewing and implementing the Top 5 Life Changing Categories. If these categories are not followed it could detrimentally change a person's life. All workers and site visitors are required to: Know the Categories. Know the Safeguards

**RAW WATER FACILITIES**

**Top 5 Life Changing Categories**

- ◆ Human-Equipment Interface—Upper Site and Access Road Haul Off
- ◆ Human-Equipment Interface—Affecting Public/Exposing Publics to Hazards
- ◆ Working at Heights— Fall Protection Needs Proper Planning
- ◆ Confined Spaces
- ◆ Excavation— Working around open holes

Additional safety measures include controlling vehicle entry into the site via construction staff (flagger) stationed at the intersection of Industrial Way and Arrowhead Creek Lane to ensure there is minimal conflict between vehicles and construction equipment.

To ensure pedestrian safety, construction staff is present when work occurs near pedestrian paths from the Morey's Landing neighborhood, on the Jobsey Lane trail, or within the Arrowhead Creek Park.

The Safety Culture for the project is reiterated at each morning tail gate meeting and at every coordination meeting to reinforce the importance of having a safe work site.

**Best Regards,**  
**Delora Kerber, PE**  
**Public Works Director**



Construction fencing around the work area

# Raw Water Facility Project



Signage along park pedestrian path



Signage at the intersection of Jobsey Lane trail



Signage at the entrance to the park from Morey's Landing



Controlling pedestrian traffic during construction

## Storm Water

### Let It Flow!

The water runoff from roads that enter our stormwater collections system carries a large amount of debris and pollutants. Stormwater catch basins require regular maintenance or cleanouts due to the amount of debris that can build up in the basin. Each basin has a sump that is a designed volume of space to hold the debris and still allow the stormwater water component to discharge downstream. Once that sump volume is consumed the debris can obstruct the discharge pipe and cause road flooding or even residential flooding issues. The images below depict the typical stormwater catch basin clean-out process.



*Before—no pipe in sight*



*During—can start to see pipe*



*Cleaning catch basin*



## Storm Water and Roads

### Don't Leave It to Beaver!

Last year the Department installed a flood control and habitat device referred to as the “Beaver Deceiver”. Its intent is to allow for habitat creation for beavers while minimizing the risk for road or residential flooding associated with beaver dams. The Beaver Deceiver does require routine maintenance to strike the careful balance between habitat and flood control. The images below depict staff clearing the bypass pipe required to allow the device to properly function.



*BEFORE— built up debris pile*



*AFTER—water flowing again*

### Mowing the Bowl

Rough mowing is performed in the Boones Ferry-Boeckman Bowl (inside of the ramp from Boones Ferry Rd. to Boeckman Rd.) to mow the tall grass. Cutting the lawn assures proper sight distance for vehicles when pulling onto Boeckman or Boones Ferry Road. It is also needed in order to reduce the fire hazard, minimize rodent and weed infestations.



*BEFORE—tall grass*



*AFTER—trimmed lawn*

## Roads

### Fill a pothole here and a pothole there

Pothole repair on Day Road are an ongoing issue due to the high daily truck traffic. The repair helps ensure a safe and smooth driving surface and minimize the risk of accidents and damage to vehicles. Minor potholes can simply be filled with either cold or hot asphalt. This isn't ideal but is typically done when a larger road treatment is planned in the future. Larger potholes require a patch which is a larger cut out with defined edges to prevent the pothole from spreading further.



*Patched*



*Newly filled pothole*

### Can See the Crosswalk More Clearly Now

The typical crosswalk markers seen within the City are composed of a material referred to as thermoplastic. Thermoplastic provides for better surface traction, longer life span and increased visibility over the traditional paint alternative. Recently several sections of “thermo” crosswalks were replaced along Boones Bend Road in Charbonneau. The process is fairly simple for a trained road specialist with the right equipment.



*Crosswalk—Before*



*Crosswalk—After*

## Facilities

### Summer Fun at the T House

As time allowed, the Facilities team continued whittling away at the Tauchman House deck repairs. Crews worked to reestablish the railing system and stair cases as they prepare the entire deck for a fresh coat of paint.



*Facility Maintenance Specialist Robert Todd, loads the lumber for the deck railings on the trailer for transport*



*Facilities Supervisor Matt Baker and Technician Javid Yamin, put the final rail pickets in place*

### Seek and Find Assets

Summer time is here and the dry weather provides the opportune time to implement the Facility department's annual storm asset maintenance program. Earlier in the year, Facilities Maintenance Specialist Robert Todd, used a combination of as-built drawings and good old-fashioned brush beating to locate and enter all of the Facility storm assets into Cartegraph. In the end, there was found to be 108 storm assets that were split into a rotating biennial maintenance schedule leaving crews with slightly more than 50 storm assets to clean each year.



*Stormwater Facility at Charbonneau Well Site Before & After*

# Facilities

## A Sign of the Times

Facility Maintenance Specialist Daniel Morena and Technician Ivan Crumrine, Installed a new Frank Lockyear interruptive sign at the Library outdoor sitting area. The crews poured a new footing and anchor bolts before assembling and installing the sign. Additionally, staff modified the sign by placing a plexi-glass cover over the sign for added protection from vandals.



*Old Lockyear sign damaged by vandals*



*New Lockyear sign with plexi-glass cover*



*New sign sits upon a the new footing*

## Utilities

### Wheel of Valves

The water crew has been hard at work replacing old blow off valves that are at the end of their life span. The valves that are being targeted are a “wheel valve” style, which over time corrode and become prone to failure when they are operated. The valves are being replaced with a standard gate valve, which is a far more robust style of valve. In addition to replacing blow off valves, the crew has been performing some full fire hydrant replacements. The crew is targeting the old Dresser brand fire hydrants in the system, which no longer have readily available repair parts.



*Using the vacuum truck to excavate trench*



*Installation of blow off valve*

## Utilities

### Can you dig it?

This month the wastewater crew has used the information gathered from the video inspections of the public sewer mains to identify several sections of underground pipe that are in need of repair.

The first repair the crew tackled was a 12 foot deep section of pipe that was nearly half blocked with concrete. The concrete had settled and become attached to the inside of the sewer main. If left unchecked this obstruction could possibly collect debris until the pipe was completely blocked, causing a sewer overflow at the nearest upstream manhole.

In order to prevent this from occurring, the wastewater crew excavated a trench 3 feet wide by 9 feet long and 12 feet deep. The trench was shored with hydraulic rams, allowing a crew member to safely enter the excavation. The section of concrete pipe that contained the blockage was removed and replaced with 4 feet of new PVC pipe. Once repaired, the trench was back filled, compacted and the asphalt was patched.

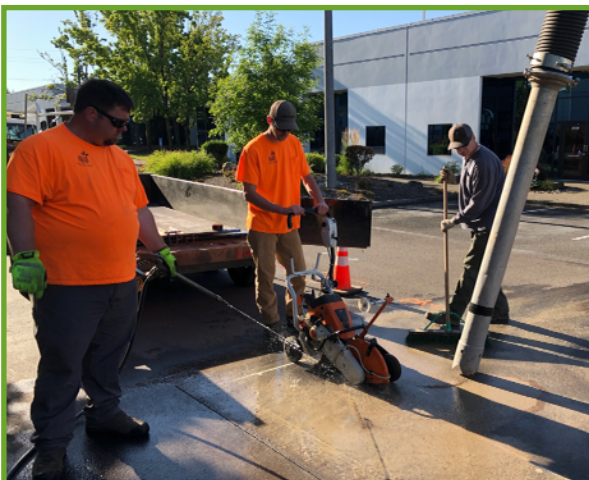
This is the first time a sewer main repair has been executed completely in house without contracting out any work. The crew was able to finish the entire repair in a single day with very minimal impact to the surrounding businesses.



*Removing Asphalt*



*Loading up*



*Cutting Concrete*



*Working in the trench*

# SMART

SOUTH METRO AREA REGIONAL TRANSIT

## July 2020 Report

Like some, I have come to many luculent conclusions in life based on my own personal experiences, which I would suggest is the preferred method for arriving at most conclusions. For example, I have concluded that most people, not all, most of the time, but not always, will do the right thing if given the opportunity. I have further concluded that a mob will tend to be a bit naughtier than an individual, which appears to be supported by historical events, as well as by my own unscientific research.

Throughout history, there have been individuals that have stood up to the mob. The mob is not always an unruly group of people. The government, an unjust law or social norms can often be representative of the mob. I would argue that there are times when it becomes necessary to break or defy a law.

The practice of nonviolent civil disobedience is an effective tool available to those in their struggle for freedom and human dignity. A few of the notables that helped to usher nonviolent civil disobedience into our collective consciousness include, Harriet Tubman who built an underground railroad to lead slaves to freedom. Rosa Parks refusing to give up her seat on a city bus. The courageous men and women that sat in at lunch counters all over the South, and Dr. King and his followers marching through Birmingham, Alabama without the approval of Eugene "Bull" Connor.

In my humble opinion, these American heroes all had two salient things in common. First, they were all unaware that their actions would reverberate across this nation and throughout the hallowed halls of history. The second and most important commonality is that they all practiced civil disobedience with grace. They understood that violence begets violence, and that any violent action on their part would burden future generations with untold misery. In short, and in the words of Arthur Ashe, these special individuals knew that "true heroism is remarkably sober, very undramatic. It is not the urge to surpass all others at whatever cost, but the urge to serve others at whatever cost."

Dwight Brashear  
Transit Director



## Transportation Options - Michelle Marston Program Coordinator

Walk at Lunch returns! Thankfully, Walk at Lunch was not forgotten in our hiatus. We resumed our weekly Walk at Lunch program on July 8, with a wonderful walk through the newly renovated garden area of Murase Park. SMART staff greeted 6 walkers back with our business partner of Safe & Hound. Walks continued through the month of July, with Edge Family Fitness, BenchMark Physical Therapy and Nichols Family Agency-Allstate as our business partners.



SMART conducted an ECO-Employee Commute Options survey for Vision Plastics (VP), one of the few businesses operating at full capacity, with alternate work shifts. VP is a full service manufacturer of precision plastic products and value-added services for the Healthcare, Information Technology, Industrial, and Consumer markets.





**Fleet Services - Scott Simonton****Fleet Services Manager**

As an added safety measure, we are installing Plexiglas driver shields in our buses. This has been a bit of a challenge, as we need to be mindful of the balance between safety and driver comfort. Additionally, installations must meet United States Department of Transportation/ Federal Motor Vehicle Safety Standards DOT/FMVSS for both anti-glare and shatter resistance. OEM (original equipment manufactured) supplied kits are beginning to come to market, as shown in the accompanying photos.



## Grants and Programs - Elli Work

### Grants and Programs Manager

Comedian George Burns said, “Too bad that all the people who know how to run the country are busy driving taxicabs and cutting hair.” We know we can add grocery store workers, bus drivers, and medical personnel to that list! These trying times really show us just what our day-to-day needs are and the extraordinary people who can help provide them. It also makes clear what is necessary to sustain our cities, big and small:

#### ***public transportation.***

While ridership has declined, the service remains critical for those who need it to acquire food, get to work, and obtain medical care.

Kelley Blue Book recently reported that the average price of a new vehicle is \$38,530. Given that, consider that the current unemployment rate is 11%. Now, add to this an economic forecast that might as well come from a Ouija Board. The very

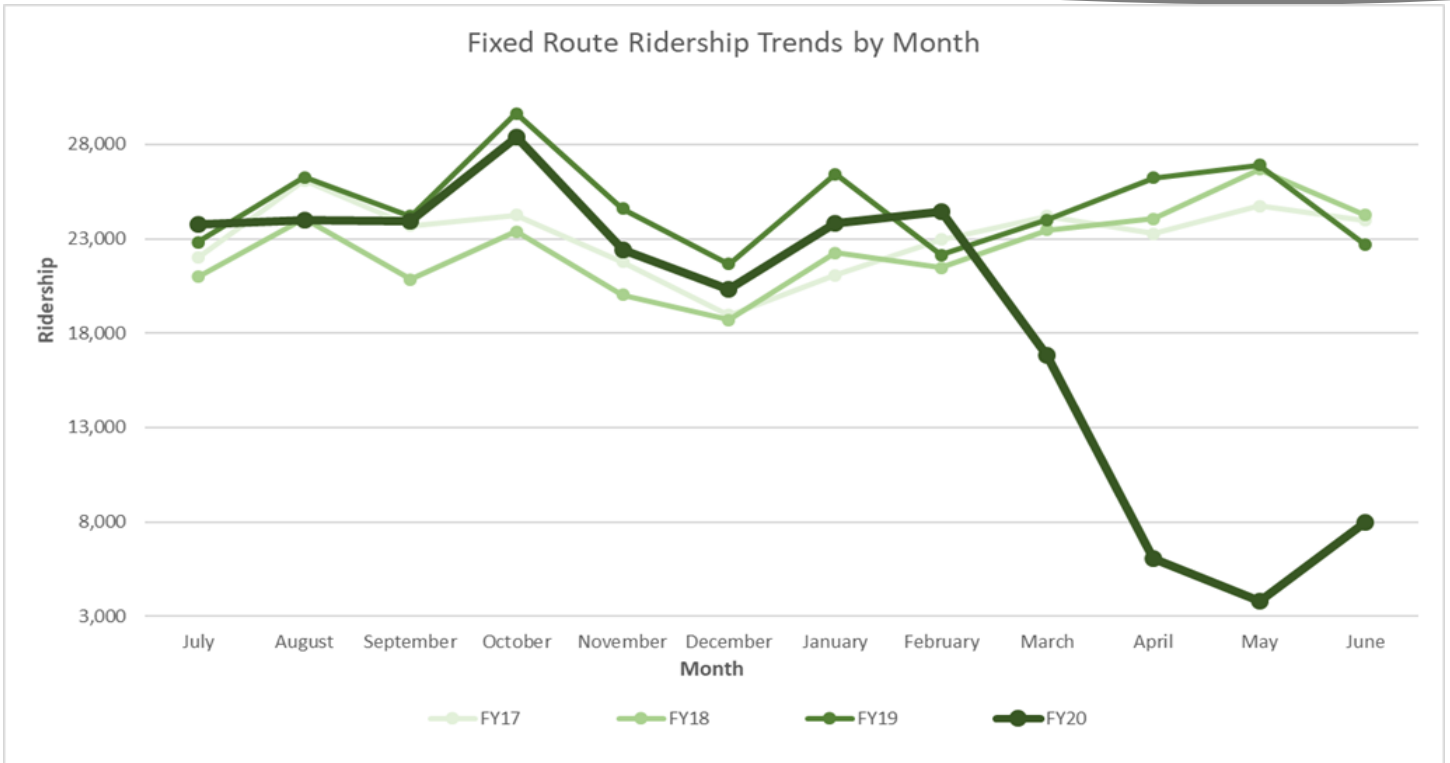
people we need – to save and sustain us -- are often the ones who cannot afford a car and rely heavily on public transportation.

Mr. Burns knew who the most important people were around the middle of the 20<sup>th</sup> Century. Now we do too.



Say goodnight  
Gracie.

**Operations - Eric Loomis Operations Manager**



In June 2020, SMART operated near pre-COVID-19 service levels. Ridership is slowly increasing. June Fixed route ridership doubled from the previous month (May 2020). However when compared to June 2019, June 2020 ridership was down by 65 percent. Demand responsive ridership in June 2020 increased by 36 percent relative to ridership in May 2020. June 2020 demand response ridership is only approximately 30 percent of June 2019.

