

From The Director's Office:

Unique construction techniques are being used in the building of the Public Work Complex. In the bottom right area of the aerial photo below is the foundation of the administration building. The tilt-up wall panel sections for administration building are being constructed on site on top of the foundation slab. A "bond break" material is spread over the concrete slab and then the wall sections are formed with plywood around the edges and blocking out the areas that will become either doors, windows or other wall penetrations. Reinforcement bars are placed in the wall cavity and concrete is poured to fill the form. The face of the wall is finished to a smooth texture and then another layer of "bond break" is spread and second set of wall panel sections are formed and poured. This process is repeated until all the wall sections are created. Once the wall panels concrete is cured then the sections will be pulled up and hoisted by a crane to be set into place around the perimeter of the administration building.



Best Regards,

Delora Kerber, Public Works Director

Utilities—Water

Tapping a Water Main in Charbonneau

The Utilities crew performed a water main tap to install a new service line for a residence in Charbonneau. When the service line was originally installed, it was configured as a single line coming across the road and then splitting to service two homes. When the main shutoff valve to the meter or 'curb stop' failed, the only option was to upgrade to the current construction standards and create a separate service line.



The water main was located on the opposite side of the street from the home, so a trench across the roadway was required. Staff excavated down to the main line and cleared the soil around the section to be 'tapped'. Staff drilled a hole into the water main using special equipment to install a corp stop valve and a new service line. Once the line was connected; the trench was backfilled and compacted in preparation for paving.



Utilities—Water cont.

Routine Hydrant Inspections

The crew wrapped up another round of hydrant inspections. Hydrant inspections ensure that each hydrant operates smoothly and drains properly when shut off. Hydrants are looked over from top to bottom, lubricated and rebuilt if needed. Staff make sure they are visible and they are easily accessible.

Large Meter Testing

Oregon Meter Repair was brought in to test and calibrate a portion of the large meters in the City. Meters that are three inches and larger are tested to verify accuracy. These meters are located at the larger commercial properties, industrial facilities and schools.

The process for testing a meter consists of using a calibrated bench tested meter that the contractor provides. The calibrated meter is connected to the meter being tested. Water is run through both meters and compared for accuracy. If necessary the contractor performs any repairs or adjustments to the meter while on site. If the meter is not repairable it is scheduled to be replaced.



Accessing a commercial meter



Attaching to the calibrated meter

Utilities—Wastewater

Routine Cleaning and Video Inspections

The crew continues to perform cleaning and closed-circuit television (CCTV) work in Charbonneau. This month the crew encountered a few spots which required additional root cutting within the main sewer line and CCTV work was done after cleaning to ensure the roots had been removed.

Nozzle Demonstration

Wastewater and Stormwater staff attended a vendor demonstration of different nozzle options that can be utilized on the combination cleaning truck for cleaning stormwater and sewer lines. The demo was informative and allowed the operators to visually see the spray pattern of each nozzle through a transparent tube. The tube was equipped with a flow meter and pressure gauge allowing them to see how much water would be used with the various nozzles.



Stormwater

Sinkhole on St. Helens Drive

A citizen reported a sinkhole on St. Helens Drive. Further investigation confirmed the presence of a cavity in the asphalt in the cul-de-sac. Utilities staff responded to provide locate services and assistance with operation of the vacuum truck to remove soil to determine if a water or sewer service line was involved. The cause of the hole appears to be as a result of a failed stormwater manhole. The crew temporarily sealed the leak from the manhole and ensured the street is safe for pedestrians and vehicle traffic. Repairs are scheduled to be completed the first week of February.



Manhole Raise in Charbonneau

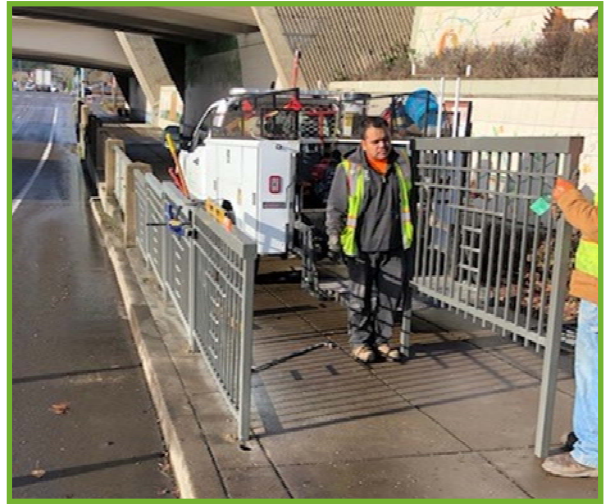
During routine cleaning of city inlets in Charbonneau, our crew discovered a sunken manhole that had been buried for a significant amount of time. Staff dug out the manhole, added a ring to lift the lid to the new height, and filled the soil back in.



Roads

Installing Railing at Beauty and the Bridge

A recent traffic collision damaged the custom railing at the I-5 underpass. The panels are traffic collision rated to protect pedestrians while also providing a decorative flair. These panels are special order so our Roads team order more than was need for this repair to have them on hand for a quicker replace should the need arise.



Saying “Until Next Time” to Winter Holiday Cheer

Roads staff completed the last few tasks to pack away the holiday decorations. The ornaments, ribbon and lights were taken down from the Leyland Cypress on Wilsonville Road at Boones Ferry Road using a 35 foot electric lift. Staff must gear up and tie in to complete this work—requiring special training and being comfortable working at approximately 30 feet over the ground.

