

From The Director's Office:

Transformation of the Public Work Complex site over the past 12 months.



Best Regards,

Delora Kerber, Public Works Director

Facilities—cont.

Unsung Workers

While many people are asleep or preparing for work, the Janitorial crew is busy getting our buildings cleaned and ready for business. This is a job that goes widely unnoticed. Nick and Taylor have been doing a great job keeping up with the tasks while their team is short staffed on crew members.

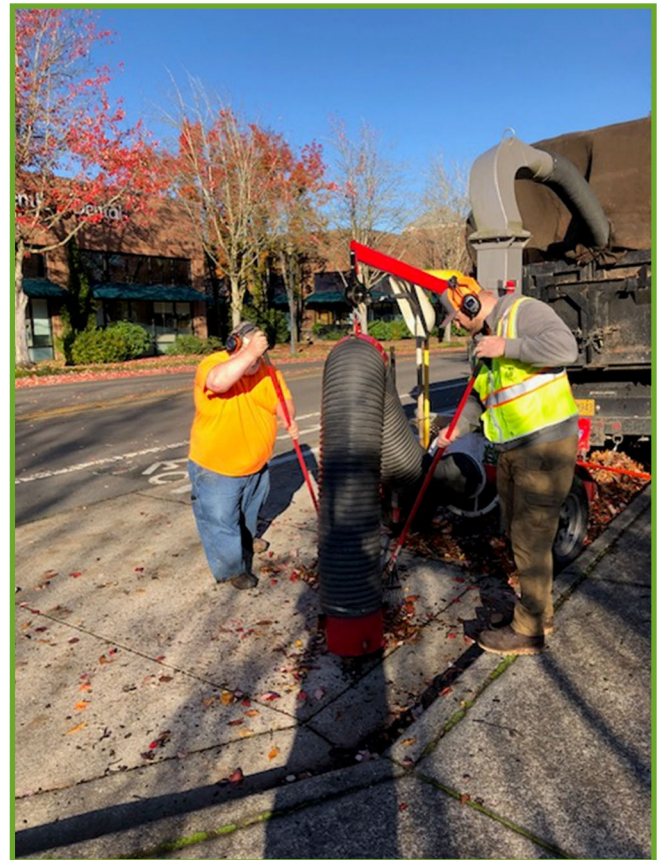


Something else that often goes unnoticed until it becomes a problem is moss. Here James is scraping moss off of curbs at Public Works.

Facilities

Turning Over a New (and Old) Leaves

It is that time of year again when the annual leaf drop starts to happen. It has been a team effort this year getting everyone involved with helping getting out Facilities sites cleaned up. Here is Trevor, Robert, Konnen, and Luke getting the area around the Library cleaned up using the leaf box and leaf vacuum.



Facilities—cont.

Decking the Overhang at City Hall

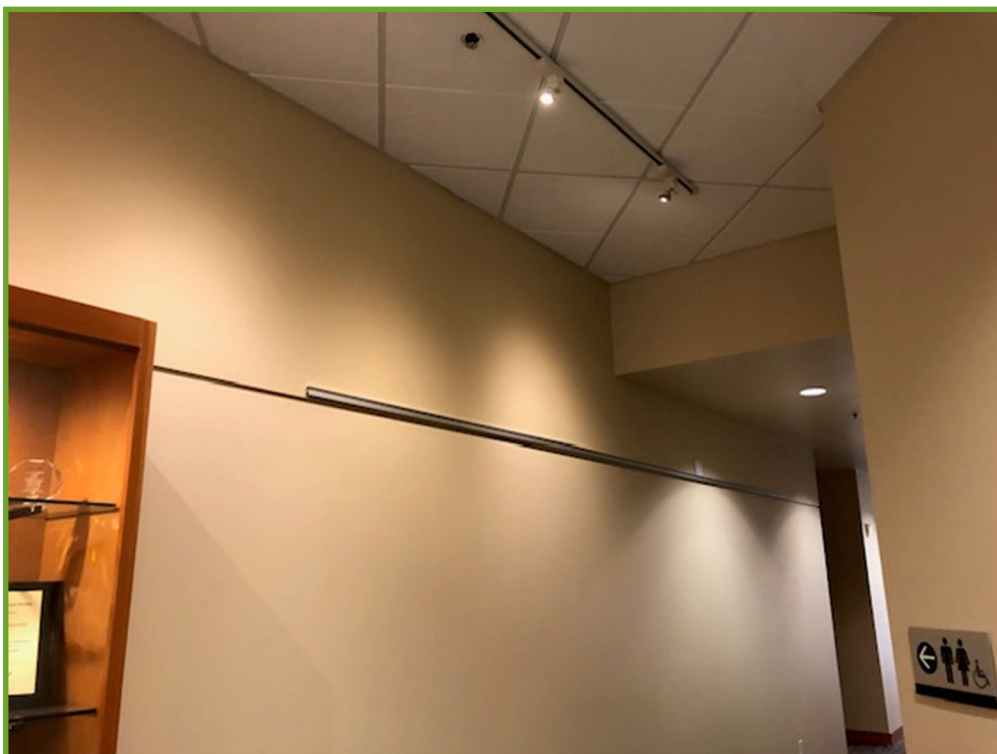
The Facilities team was able to use the bucket truck to install holiday decorations at City Hall. It was team effort assembling the trees and organizing the decoration to be placed on the awnings over the doors.



Facilities—cont.

A Place to Hang Out

Facilities Maintenance Technicians, Trevor and Konnen, installing a new track and cable system for the Art, Culture and Heritage program at City Hall. This system allows the program to utilize more wall space and provides flexibility on which type of hanging system to use.



Roads

Learning and Refreshing

The Roads Department started out the month of November with a series of in-house staff trainings.

In preparation for snow and ice removal, staff learned how to install chains on City vehicles and the proper operation of the snow plow.



Roads—cont.

Learning and Refreshing

Staff participated in training related to the operation of the bucket truck which is used for work above a safe height for ladders. Such as for the install of decorations or banners, tree trimming, etc.



Clip, Clip Here and a Clip, Clip There

Staff has been trimming the City's right of way landscape areas, particularly the roses as well as trees to improve the sight line for drivers to see street signs.



Roads—cont.

Pothole Be Gone

To ensure potholes were sealed before the winter rain, Roads staff performed asphalt patching and paving around town. First the area is cleaned out. Next asphalt is placed in the hole and then it is compacted with a plate compactor.



Roads—cont.

Don't Forget to Wash Behind Your Signs

The Roads Team continued their sign washing program. This is a task that is performed in the winter months to keep our signs in compliance with Federal Manual on Uniform Traffic Control Devices (MUTCD) retro reflectivity standards. Additionally, this provides an opportunity to repair signs as needed.



Roads—cont.

Decorating Along the Roadways

Roads crew finished out the month of November by installing holiday décor along Wilsonville Road.



Stormwater

Lots and Lots of Leaves

The rain and cold weather has arrived, and with it a very concentrated leaf drop and potential for flooded storm drains. Our stormwater team has been working hard at keeping all the drains and inlets clean and free of blockages.



To encourage our community members to properly dispose of their leaves, we held the annual leaf drop day on November 18. The event was a success. We collected over ten yards of debris and met many lovely Willsonville citizens during the event.



Stormwater—cont.

Stop, Go Back, No Thru Traffic

Our Stormwater team assisted with our paving and holiday light projects along with a full road closure that was required due to a truck striking the overhead grounding diffuser under the main power transmission lines on Canyon Creek Rd.



Utilities— Water

Vacuum, Identify and Repeat

(aka meter replacements)

The water crew has been working on replacing 20+ year old water meters in the Courtside Neighborhood. Prior to replacing the meters the crew preps the meter boxes with a hydro excavation trailer in order to conduct an efficient replacement with minimal disruption to the customer's water service. The crew took this an opportunity to collect data about service line material types on both the public side and private side of the meter. The crew used the hydro excavation trailer to expose the public/private service line in the meter box. The data was then recorded in the asset management system "Cartegraph", along with photos of the service lines with labels that depict the private and public side of the meter. Collecting this data will help with the compilation of the service line inventory which is a requirement of the EPA's revised Lead and Copper Rule.



Utilities— Water cont.

Let it Flow

The accuracy of the “turnout” meters was verified this month. A “turnout” in the water system is where the system transitions from the large transmission main coming from the treatment plant into the distribution piping through a pressure reducing valve. There are four turnouts in the system each of which have a flowmeter. Every year a contractor comes out to verify the accuracy of the flow meters at the turnouts as well as the meter that is used for billing the City of Sherwood. The contractor uses an ultrasonic flowmeter that can be clamped onto the pipe. The ultrasonic flow meter measures the flow by transmitting and receiving a burst of ultrasound between two transducers and measuring the transit time. The readings of the ultrasonic meter are then compared to the turnout meter readings.



Utilities— Water cont.

Exercising Valves: Open 1,2,3 and then Close 1,2,3

In addition to work orders, meter replacements, locates, and escorting contractors, the water crew conducted some valve exercising on 95th Avenue in preparation of a shutdown that will be occurring in December. The purpose of the shutdown is for the relocation of a 12" water main that is in conflict with Willamette Water Supply Raw Water Pipe Project. The valves in this area are very deep so in order access the valves the crew had to use an extremely long valve wrench to get the job done.



Utilities— Wastewater

Exposing Hidden Assets

The sewer crew has been cleaning sewer and conducting CCTV inspections in the vicinity of Willamette Way East. In addition to cleaning and inspecting the crew has been assisting with utility locates, and uncovering manholes that have been buried over time in preparation to raise the lids to grade.

