



MARCH 2021 MONTHLY REPORT

From The Director's Office:

Federal Emergency Management Agency (FEMA) has a Public Assistance (PA) Program which provides supplemental grants to state, tribal, territorial, and local governments, to help communities quickly respond to and recover from major disasters or emergencies. FEMA also encourages protection of these damaged facilities from future events by providing assistance for hazard mitigation measures during the recovery process.

Anticipating there might be financial support for the February severe weather event, staff diligently tracked expenditures associated with our response and recovery efforts. Employees used the Work Order module of our asset management software to collect staff hours—regular and overtime, usage hours of associated equipment and costs of contractor work.

In late February, the City provided our preliminary estimates to Clackamas County as our Initial Damage Assessment (IDA). The County combined our expenses with other county agencies to determine if disaster expenditures within the county met their PA financial threshold of \$1.5 million for a FEMA declaration. The State threshold is \$6.5 million. As of early March, the damage estimate for jurisdictions in Clackamas County was just over \$14 million which is well above the required minimum.

The next step in the program was for the City to meet with representatives from FEMA Region 10 and Oregon Emergency Management Department to update, review and verify the submitted cost information to establish firm numbers for our Preliminary Damage Assessment (PDA) to qualify for a disaster declaration request. Since the IDA submittal, the City collected additional data for the costs associated with volunteer hours, debris disposal, repair of the pavement and curbs at the debris drop-off site, replacement of lost traffic cones and restoration of damaged street trees which we added to our PDA. We submitted documentation for expenses totaling \$713,562. FEMA will review the submittals and determine what expenses are eligible for reimbursement as we move through the process.

Stay Tuned.



Best Regards,

Delora Kerber, Public Works Director

Utilities—Water

Out with the Old, In with the New

Water meters give less accurate readings over time due to wear and deterioration of internal components. Studies conducted in the water industry recommend that residential meters be replaced every 15 to 20 years. In preparation for annual water replacements, the crew makes a pass through a given neighborhood with a hydro excavation trailer and cleans out all meter boxes. Then they come back through the area to replace the meters and if necessary, the meter boxes. In addition to replacing residential meters, the crew took advantage of Spring Break and school being closed to replaced a 3" water meter at Boeckman Creek Primary School, which was originally installed in 1989.



Chad assists Sam in the vault



Sam performs a meter replacement

The Water crew also performed a round of inspections of all of the utility vaults containing large water meters. The vaults are first pumped down to remove water that has infiltrated through the lid. They are then inspected to evaluate the structure and function of the vault. If any repairs are necessary, they are recorded with a future work order in our asset management software.



Chad cleaning vault

Utilities—Water Cont.

Whoops, there goes the Fire Hydrant

Much of the work that the Water division has to perform is reactive, whether it be responding to customer concerns or repairing a leak. This month the crew dropped everything to replace a fire hydrant located in a loading dock area off of 95th that had been knocked down by a semi-truck and trailer.



Broken hydrant



Installing a new hydrant

The fire hydrants in Wilsonville are 'dry barrel' fire hydrants. This type of hydrant has a valve that is located underground, which prevents freezing in cold temperatures and water loss when hit by a vehicle. By design, the top of the hydrant breaks off - no dramatic geyser of water shooting up in the air. Often, a hit hydrant can be easily repaired but in this case it required a full replacement. With the combination cleaning truck, the Water crew efficiently excavated the old hydrant and installed a replacement.

Utilities—Wastewater

Visiting the Hot Spots

The Wastewater division continues to perform routine cleaning of the collections system. The crew is currently working their way through Charbonneau. Each month, staff revisit a few locations that are designated as “hot spots” which require more frequent cleaning or flushing in order to keep everything flowing correctly.



Flushing the sewer line

Welcome Randy!



Randy Burnham

The Utilities division is happy to welcome Randy Burnham to the team! Randy has worked for the City since 2019 as a member of the Stormwater Division. He is currently taking online classes at Clackamas Community College to pursue a degree in Water and Environmental Technology. When a position opened up in the Utilities Division, Randy transferred into the role to perform work that is more in line with the topics that he is studying in school.

Randy’s primary duty with the Utilities Division will be operation and maintenance of the sewer collections system but he will also receive some cross training from the Water crew to round out his skills working with underground utilities.

Facilities

It was Rigged

This month, the Facility crew fell back from emergency response mode and focused on the City facility grounds clean up after the February ice storm. Several mature trees near the Public Works & Police building suffered severe damage, the worst requiring removal with the help of a contracted trees service and a large crane.



Contractors set the rigging

Tree service crewmembers climbed the trees to set the rigging, climbed back down, and cut the trunk as the crane lifted the section of tree. The crane placed it on the pavement where the Facilities staff relocated it to a safe distance using a small excavator. Staff used chainsaws and a wood chipper to process the trunk and limbs, making room for the next section. In total three large maple trees were removed.

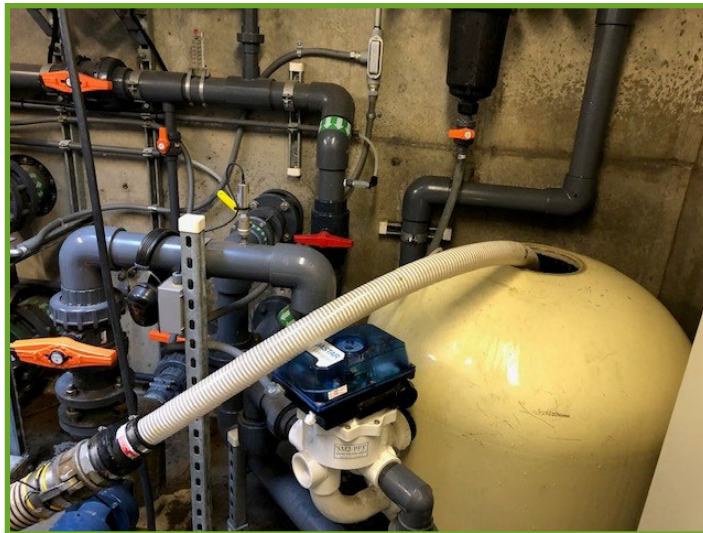


Crane removing trunk

Facilities—Cont.

Suiting Up and Heading Down

Facilities and Parks Maintenance crews performed maintenance on the water features since the systems have been sitting idle for over a year and a half. Crews found the jet pump at the Town Center Water feature in need of replacement as well as the need to replace the filter sand in all three of the sand filters. Once crews managed to get the system fired up and moving water, an extensive cleaning of the skimmer baskets and surge tanks was necessary.



Replacing the filter media

The surge tanks are located underground and maintenance is considered ‘confined space entry’, requiring a unique safety protocol. Staff must set up cones and barricades, and use a davit arm with a rescue winch to tie in the crewmember. Gas monitoring and forced fresh air are used when accessing the surge tank.



Preparation and entering an underground confined space

Roads

All is Clear on Jobsey Lane

After the Roads crew completed clean up and removal of hazardous tree limbs on the roadways, the Parks department needed assistance with clearing more trees. Jobsey Lane, the trail connecting Arrowhead Creek Park and Brown Road, had several downed trees and a significant amount of large debris blocking the trail. The Roads and Stormwater crew worked alongside Parks staff using several pieces of heavy equipment, to clear the trail.



Trees down on trail



All clear—access restored!

Citizens can now safely access the park from the neighborhoods on Brown Road and resume their favorite outdoor activities.

Stormwater

Checking It Out—Streetlights

After the severe winter weather in February, inspecting the condition of the City’s streetlights was a top priority for March. Stormwater staff conducted a city-wide inspection of all streetlights. Problem streetlights are most readily identified in dark conditions, requiring a very early start to the workday around 3AM. All the city-maintained streets were driven and any streetlights requiring repair were recorded, from complete pole replacement to just swapping out a bulb. A total of 73 streetlights were reported to PGE for service and repairs.



Damaged light pole

Colored ribbons, seen in the pictures below, indicate what kind of repair needs to happen—pink means that the light is out and green means that it flickers or stays on during the day. PGE uses these when they perform repairs, which typically take place in the evening after normal business hours.



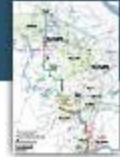
Pink means “out”



Green means “day burner”

PROJECT UPDATE

[CLICK HERE FOR FULL MAP](#)



Willamette Water Supply

Our Reliable Water Future

Raw Water Facilities (RWF)

March 22, 2021

Dear Neighbor,

We're making steady progress building the [Willamette Water Supply Program Raw Water Facilities](#) project. Please take a moment to read this month's construction update below.

Please forward this email to your friends and neighbors. It is easy to [sign-up or update your preferences](#) or [unsubscribe from this list](#) at any time.



Heads Up! Construction Activities

Thank you for your patience with our team's construction nearby.

The Raw Water Facilities (RWF) Team is working hard to complete the project safely and on time. The seismic riverbank earthwork portion of the project – to prevent the water treatment plant from being damaged in an earthquake – is highly specialized underground work. At times, the construction team runs into soil conditions requiring extra effort and time. Please be aware we are providing the best available construction schedule information that we have in our monthly updates. We will let you know as soon as possible when the schedule changes.

Willamette Water Supply—Raw Water Facility

To keep the public safe, bicyclists and pedestrians are prohibited from entering the construction sites.

UPPER SITE

The RWF team anticipates the **Arrowhead Creek trenchless crossing** activities through fall 2021. Work includes building and excavating the launch and receiving shafts through spring 2021 and the trenchless pipeline crossing beginning mid-April through mid-June. This work requires large cranes, excavation equipment and increased truck traffic.

Installation of new water and sewer utilities in Arrowhead Creek Lane and connections of these new lines to the existing utilities in Brockway Drive will begin March 17 and continue through early summer. The utilities will serve the new electrical building. This work may require intermittent bike path closures to keep the public safe. This work will be noisy.

The **installation of a large underground vault**, in the NW corner of the upper site to hold a large meter and valves, is anticipated to begin at end of March and will be complete in spring 2021. This work requires excavation equipment and increased truck traffic. This is a concrete vault that will require carpenters to build form work. Hammering and lumber sawing noises should be expected.

LOWER SITE

The **seismic riverbank reinforcement earthwork** will increase and continue through mid-summer. Noise and large truck traffic through the park may increase through completion. The deep soil mixing component of the project is complete; removing the deep soil mixing drill rigs will be noisy and will increase activity at the site. The removal of this equipment will be complete this summer.

New 66" diameter water pipeline installation through the park is anticipated to begin this spring and will continue through spring 2022. As planned and approved (by the City of Wilsonville), the **FULL PARK CLOSURE** is anticipated to begin as early as June 1 through fall 2021 to facilitate water pipeline installation and to keep the public safe. The Brockway Drive and Ice Age Trail access into the park will be closed with fencing and signage during this closure. All access paths into the park will be closed during this full park closure.

We will post signs and mail information to nearby neighbors in advance of this full park closure.

Willamette Water Supply—Raw Water Facility

Steve is our onsite inspector who is monitoring noise and vibration levels and addressing noise and vibration concerns. You can reach Steve at 239-292-4748 (cell) or steve.clapper@twwd.org.



Learn More About the Raw Water Facilities Project

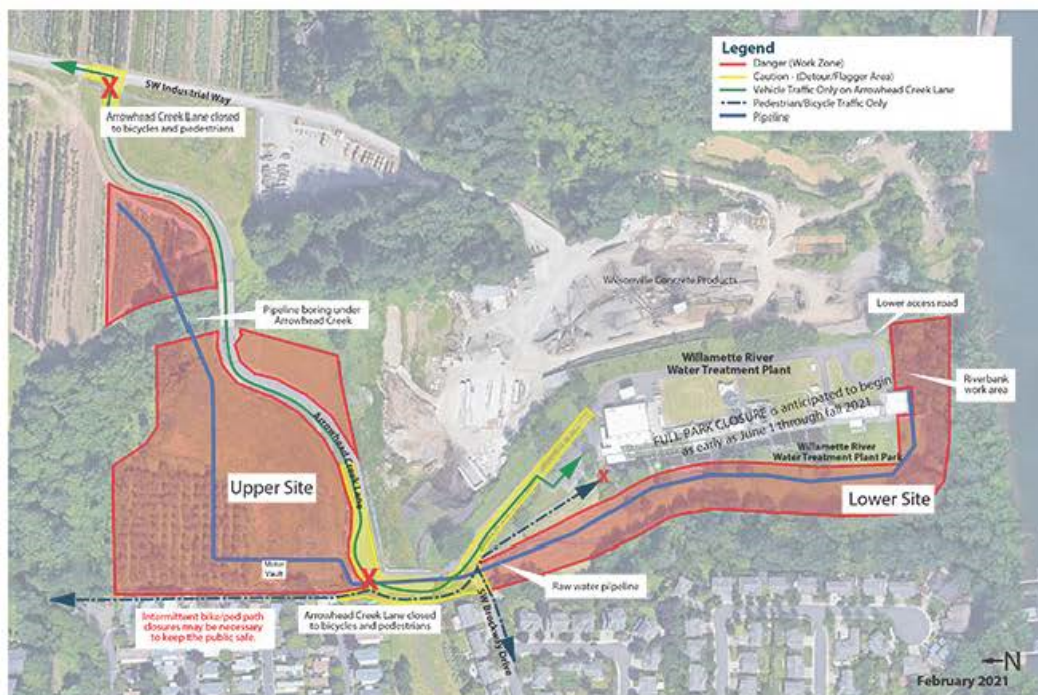
Project Overview

In coordination with the [City of Wilsonville](#), the Willamette Water Supply Program team is building improvements in and around the Willamette River Water Treatment Plant in Wilsonville. Construction is underway and expected to take four years. Improvements include:

- an improved pump station
- a seismically reinforced Willamette Riverbank
- increased water intake capacity
- a new electrical building
- a new raw water pipeline
- park restoration after construction

Willamette Water Supply
Our Reliable Water

Raw Water Facilities



Willamette Water Supply—Raw Water Facility

Project Schedule

- **Phase 1 Construction Projected Completion:** February 2022
- **Seismic Ground Improvements:** July 2020-June 2021
- **FULL PARK CLOSURE** is anticipated to begin as early as June 1 through fall 2021
- **Landscape Restoration Complete:** January 2022
- **Phase 2 Construction Projected Start:** Spring 2022

Do you have questions? Please contact:

Marlys Mock

Communications Supervisor

marlys@tvwd.org | 503-941-4563

[Learn More About the Raw Water Facilities Project](#)

[Learn More About the Willamette Water Supply Program](#)