

From The Director's Office:

Construction Begins on the Electric Avenue Charging Station

The City of Wilsonville continues to innovate and progress towards a more sustainable community. In addition to the Smart Cities Pilot Project which was highlighted in Public Works September's Monthly Report, the City has a cooperative agreement with Portland General Electric (PGE) to construct one of six Electric Avenue Charging Stations within the Portland metro area.



Example of a Charging Station

This project is being implemented in anticipation of the significant increase in the use of electric vehicles over the next five years and is being constructed on the northeast corner of the Library property near the intersection of Wilsonville Road and Memorial Drive.

The charging stations will consist of both Level 2 and DC Fast Charging equipment. Level 2 Charging Stations are more commonly known and can provide an electric vehicle an additional 21 mile range with a 60-minute charge. The larger and more powerful DC Fast Charging Stations are able to supply an electric vehicle with an additional 75 mile range with a 30-minute charge time.



Looking east towards Memorial Drive



Looking west towards the Library

Construction of this project is well underway and it is anticipated it will be completed by the end of 2019.

Best regards,
Delora Kerber, PE
PW Director

Facilities Division

A Helping Hand

The Wilsonville Public Library will soon be getting a new digital reader board. In order to support the functions of the reader board, the Facilities crew agreed to prepare the site and install the needed infrastructure. To start, crews took measurements and completed the site layout. Next, a 30" deep and 50' long trench was excavated down the embankment to the Library foundation wall. Once the electrical inspection of the ditch was completed, Crews installed three 1" conduits and core-drilled them through the foundation wall and into the Library crawl space. Lastly, pull-strings were installed into the conduits in order to allow for the wire conductors to be pulled through the conduit at a later date and the trench was back filled and compacted.



Facilities Technician Javid Yamin and Maintenance Specialist Daniel Morena, ponder over the best plan of attack for the excavation of the trench.

Daniel Morena crests the top of the steep embankment with the trenching equipment.



Facilities Division

Taking a Bath

Oily Water Separators (OWS) are an industry accepted Best Management Practice (BMP) for separating oily residues from stormwater flows. Facility Maintenance Specialist Robert Todd captured these great before and after photos of the while servicing the OWS at the WES bus turn around. While Robert was supervising the contractor cleaning the separator, he noticed chunks of grout in the bottom of the vault prompting him to create a repair task for the near future.



Before cleaning



After cleaning

Preparing for the Rain

Facility crews spent a good part of October preparing for the upcoming rains. Facility Technicians Ivan Crumrine and Javid Yamin have continued with the roof and gutter cleaning while Facility Maintenance Specialist, Robert Todd and Daniel Morena began prepping the facility grounds in anticipation for the heavy Fall rains. Daniel and seasonal maintenance worker Mike Pierce, have been cleaning out bio-swales and addressing some of the early leaf drop as Robert Todd focused on armoring several outfalls by placing large angular rock at the pipe spill ways.



Roads & Storm Water Division

Holiday Decoration Preparation

The Roads Division is already starting to think about holiday decorations as it takes many hours to prepare and install all the lights, wreaths, and structures. Each year the first thing that happens is the fir tree at the intersection of Boones Ferry Road and Wilsonville Road is trimmed by Ralph Thorp, Certified Arborist who over many years has shaped this tree into what it is today. It is amazing how many compliments are received each year for the decoration of this tree which seems to be a highlight of the holiday season for Wilsonville residents.



Starting at the top



Half way done



Trimmed and ready to decorate

Montebello Outfall Repair

Through the annual storm water outfall inspection program the Stormwater crew discovered a structure needing major repair. The ground underneath the concrete structure settled leaving as much as six feet of vertical space and unsupported concrete. This large gap is concerning due to the potential for collapse. If this structure were to fail, it could cause significant flooding. Working with Metro for access to the site, the PWD staff were able to pour a flowable concrete material to backfill the large void area. It required about 40 cubic yards of material which is equivalent to five concrete truckloads of material.

Thanks to the hard work of the Stormwater crew, this outfall will be stable for many years to come.



Utilities Division

Water Distribution Cla-Val

GC Systems was in town this month to rebuild a handful of Cla-Val automatic control valves in the distribution system. An automatic control valve is a sophisticated valve that can automatically open or close based on a set pressure differential between the upstream and downstream sides of the valve. These valves help us control the flow of water throughout the city and help assure appropriate pressures in areas to fight fires and assure pressure. Every year a select number of Cla-Val's in the system are rebuilt to ensure they are operating properly.



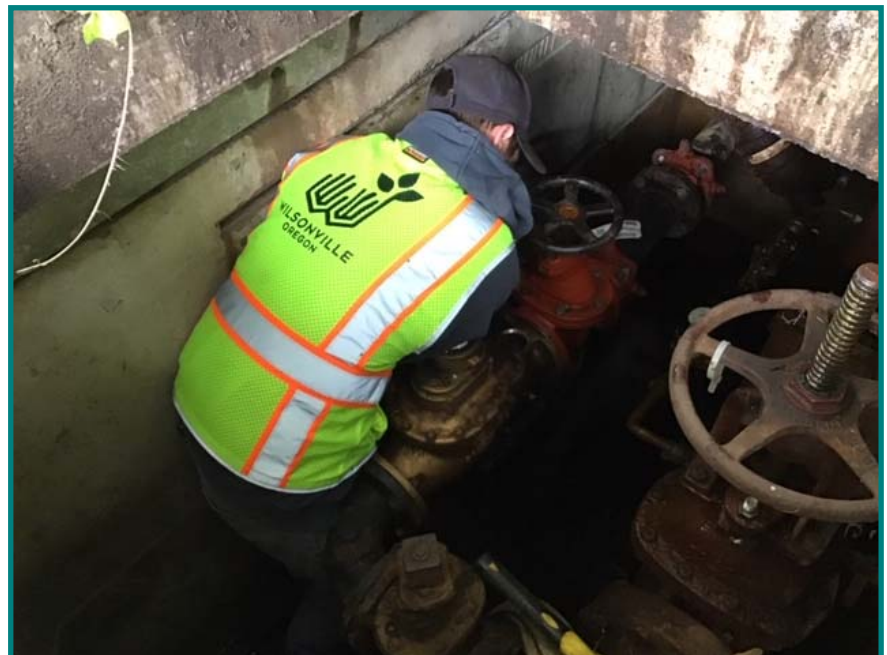
Contractors rebuilding one of the water system cla-va valves

Water Meter Calibration

This month the water crew worked with Oregon Meter Repair LLC to test meters in the system that are three inches or larger. This service ensures meters are accurately recording water consumption. In order to perform this work a bench tested meter is connected to the meter being tested and then water is passed through both meters. The readings of the meters are then compared. Depending on the results of the test, the meter may need to be repaired or fully replaced. The water crew ended up replacing a three inch meter at a commercial property after finding it was not recording usage accurately.



Steve Gering and Jerry Anderson, Water Technicians flowing water through a meter for testing.



Sam Kinnaman, Water Technician adjusting a me-

Utilities Division

Utility Maintenance Technician—Sewer

The remaining vacancy for the sewer crew has been filled with a new Utility Maintenance Technician. The Utilities Division is happy to welcome Kyle Bean to the team. Kyle brings to the City a strong background in collections system operation, maintenance and repair. Kyle's primary duty will be helping lead the sanitary sewer program. This will involve coordinating sewer cleaning in conjunction with the contracted CCTV inspection program, operating the combination cleaning truck to clean sanitary sewer lines and manholes as well as make repairs to collections system structures.



Kyle Bean, Utility Maintenance Technician