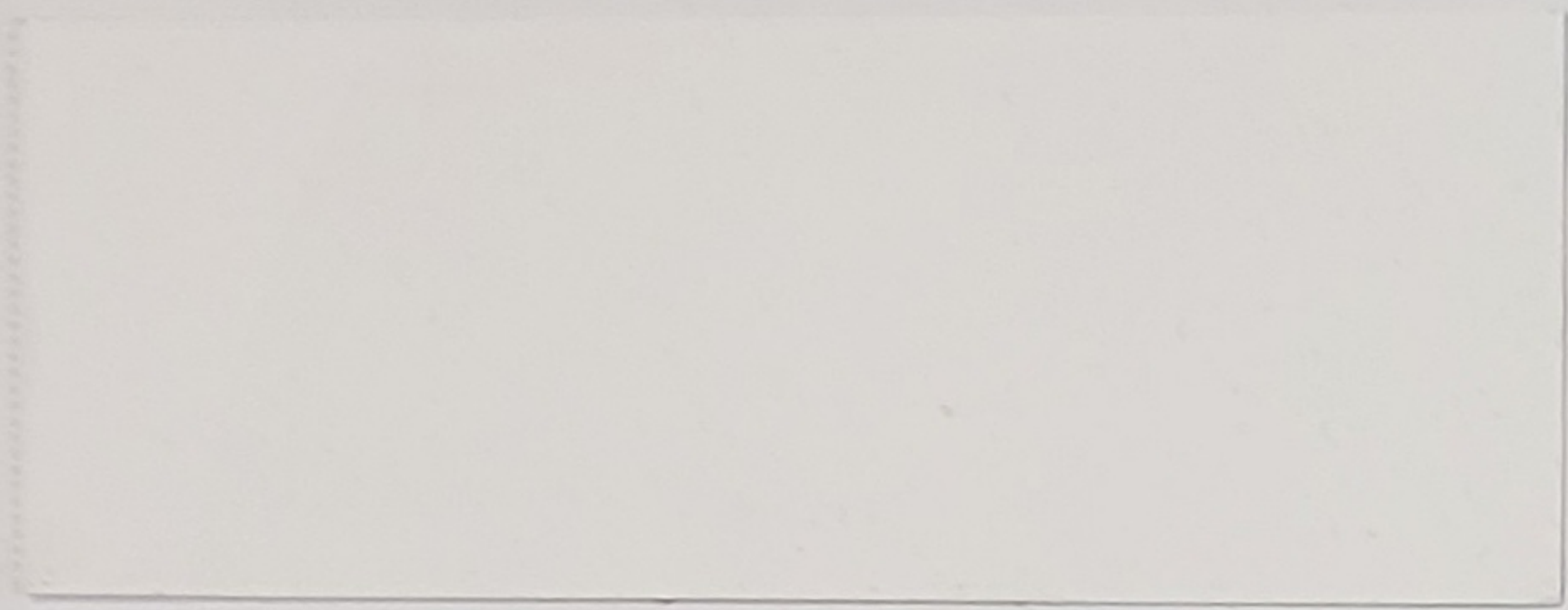
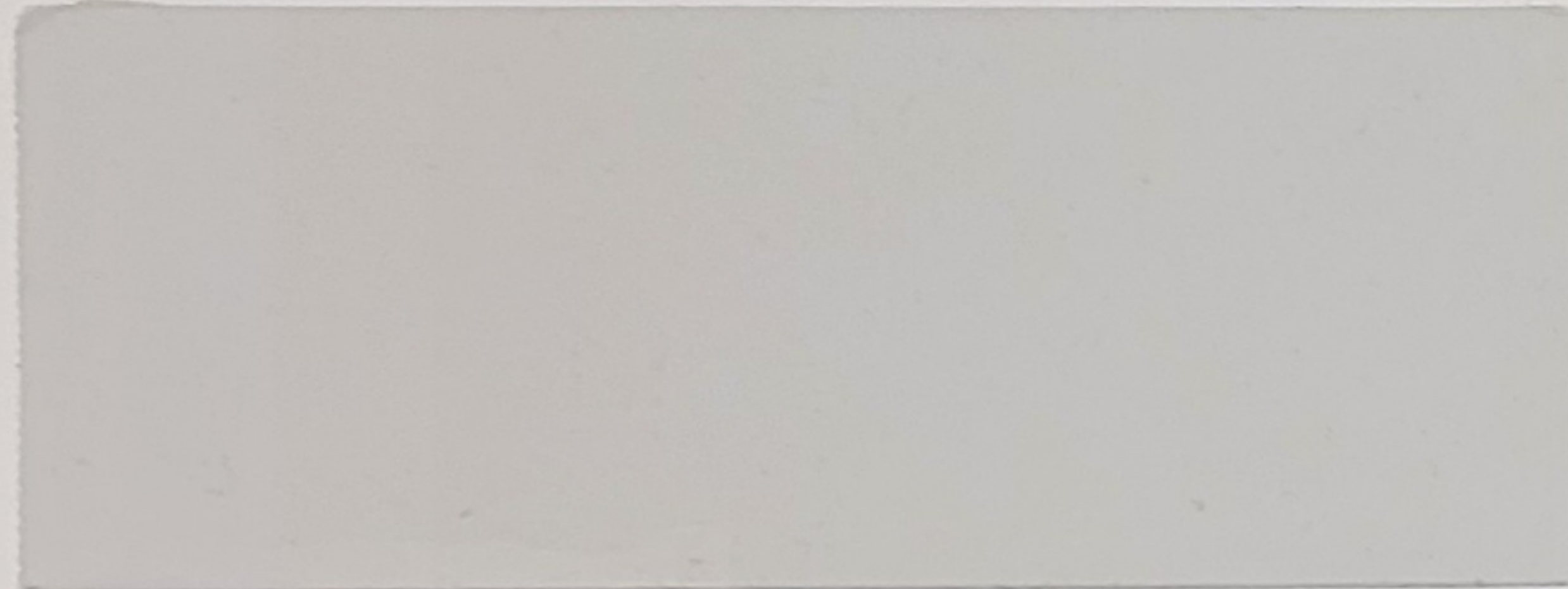


SKB PARKWORKS SPEC BUILDING | DB22-0009

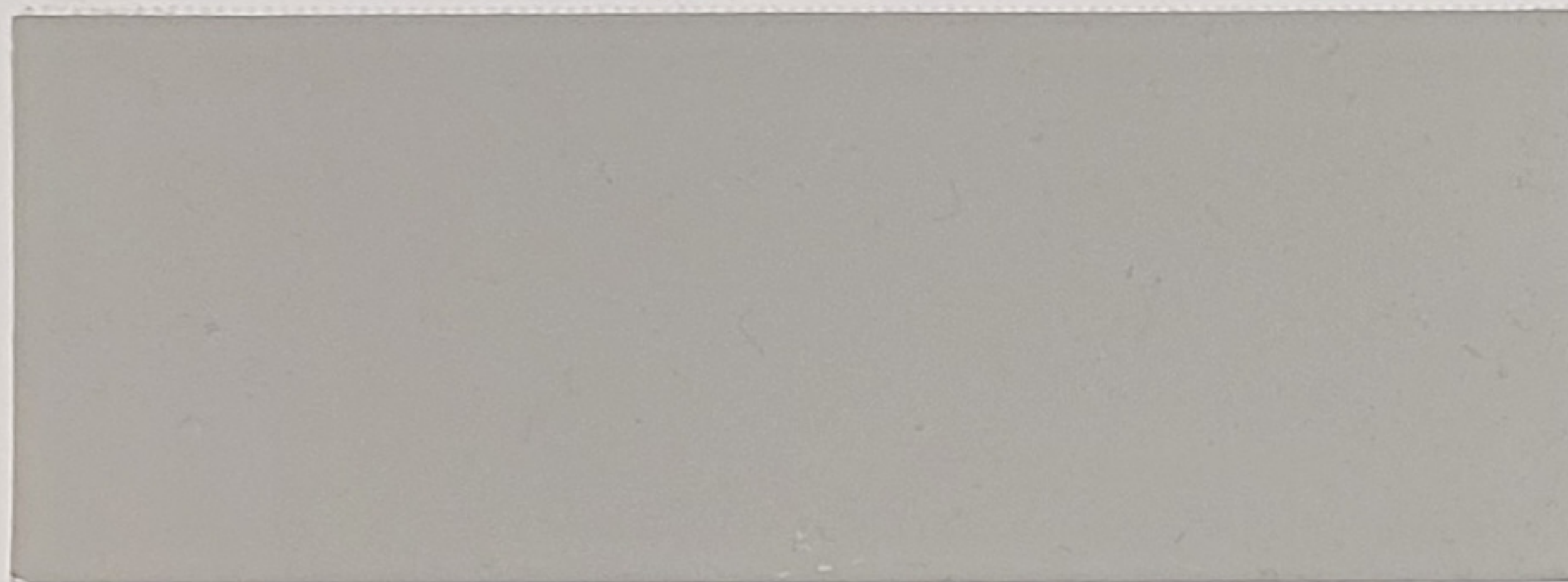
Material Board



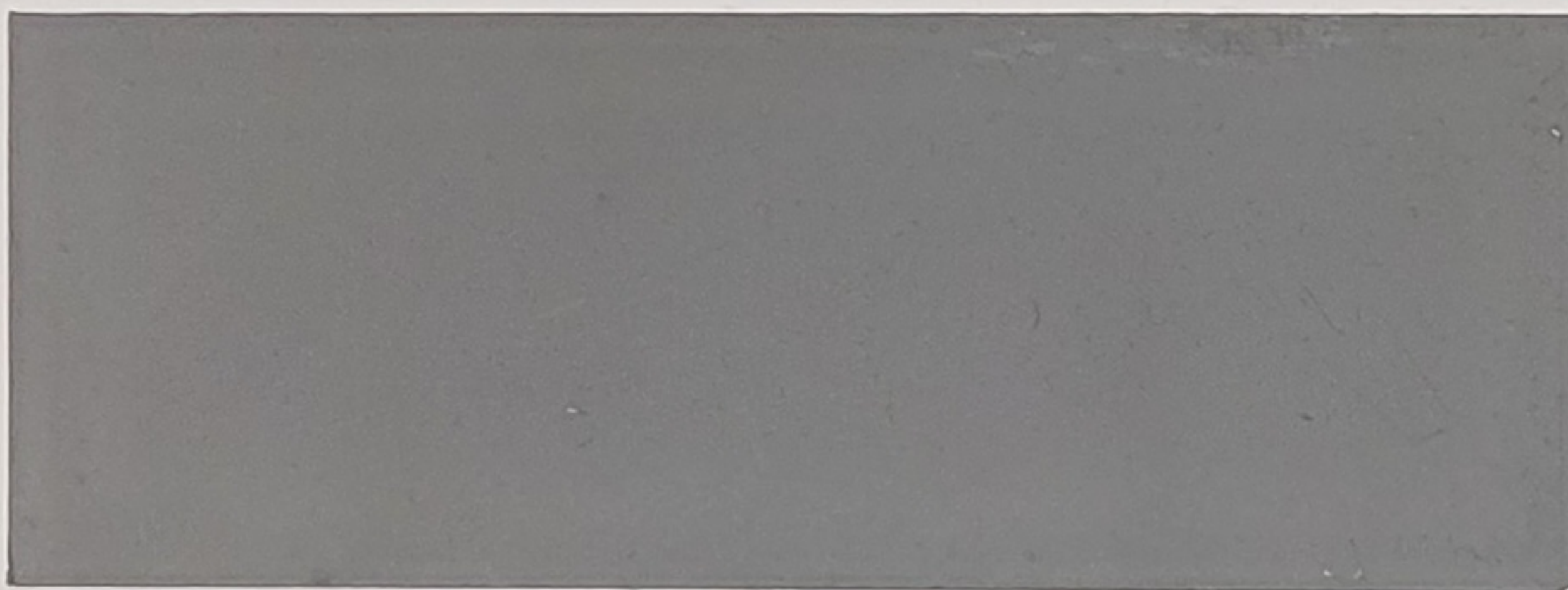
PT-1 | Elastomeric Paint #1 | Miller | Casper White, E0157



PT-2 | Elastomeric Paint #2 | Miller | Sterling Coin, E0159



PT-3 | Elastomeric Paint #3 | Miller | Stonewall, E0160



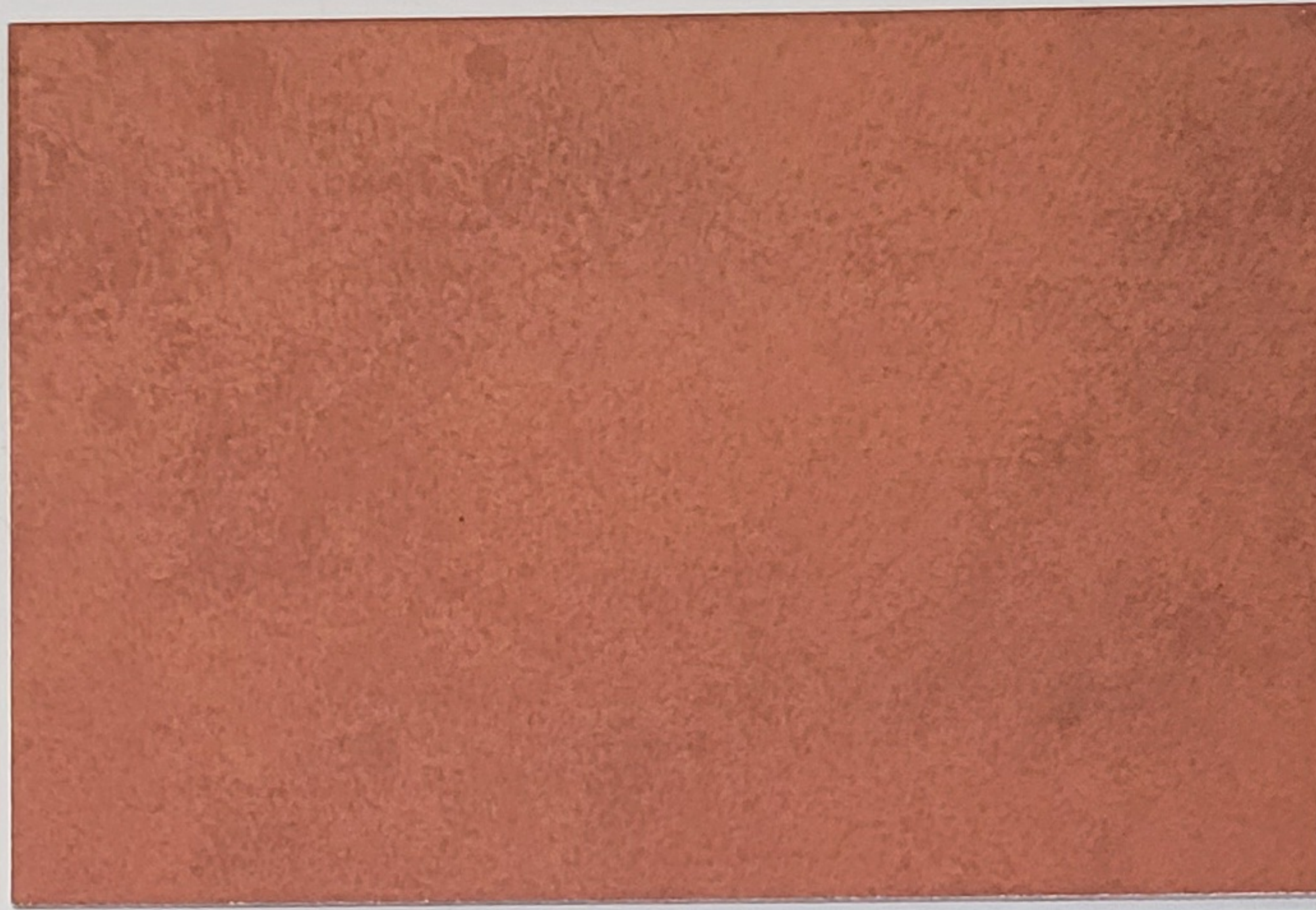
PT-4 | Elastomeric Paint #4 | Miller | Iron House, E0161



PT-5 | Elastomeric Paint #5 | Miller | Tahitian, E0162



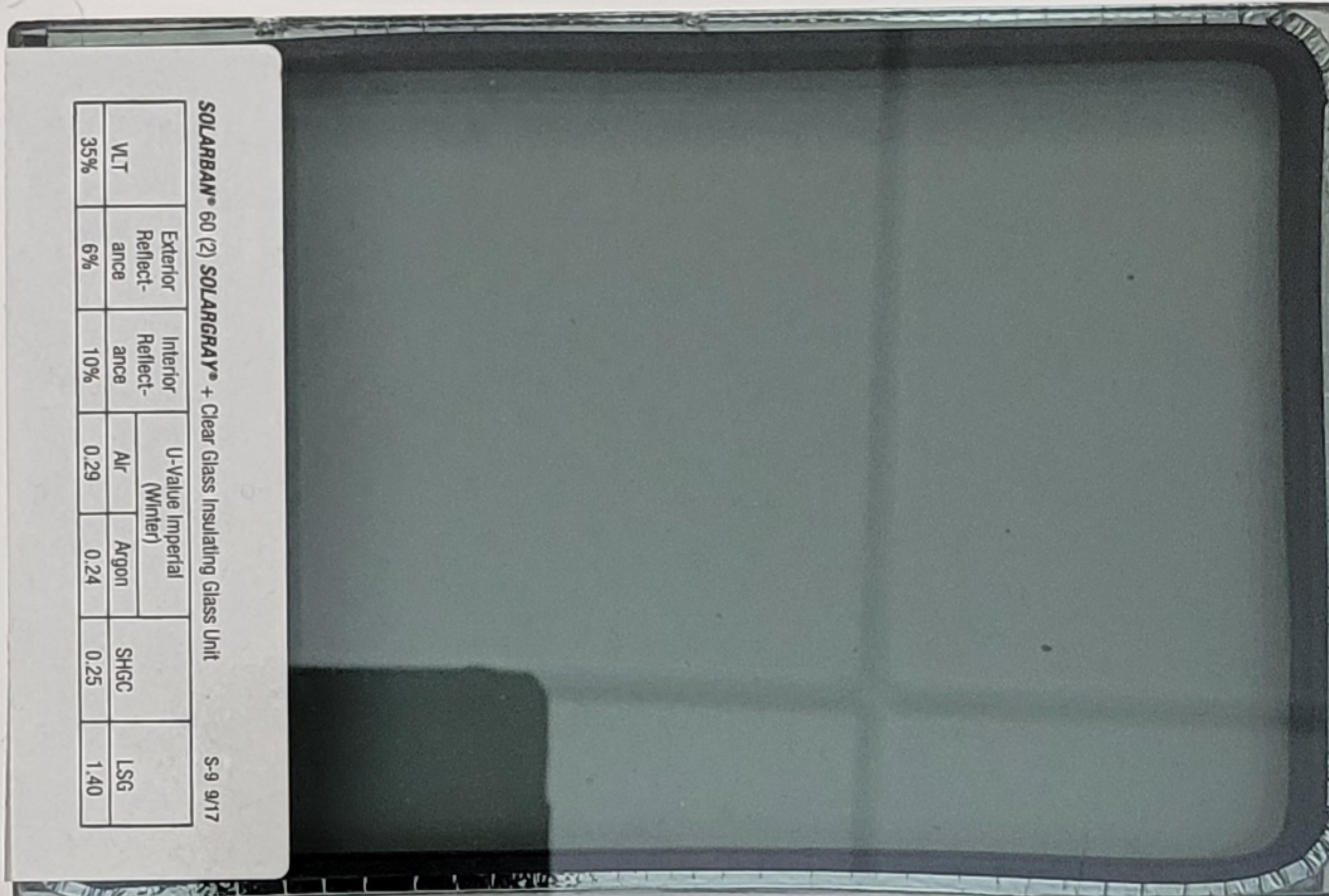
PT-6 | Elastomeric Paint #6 | Miller | Black Finish, E0164



MP-1 | Metal Panel | Rust-Look Finish



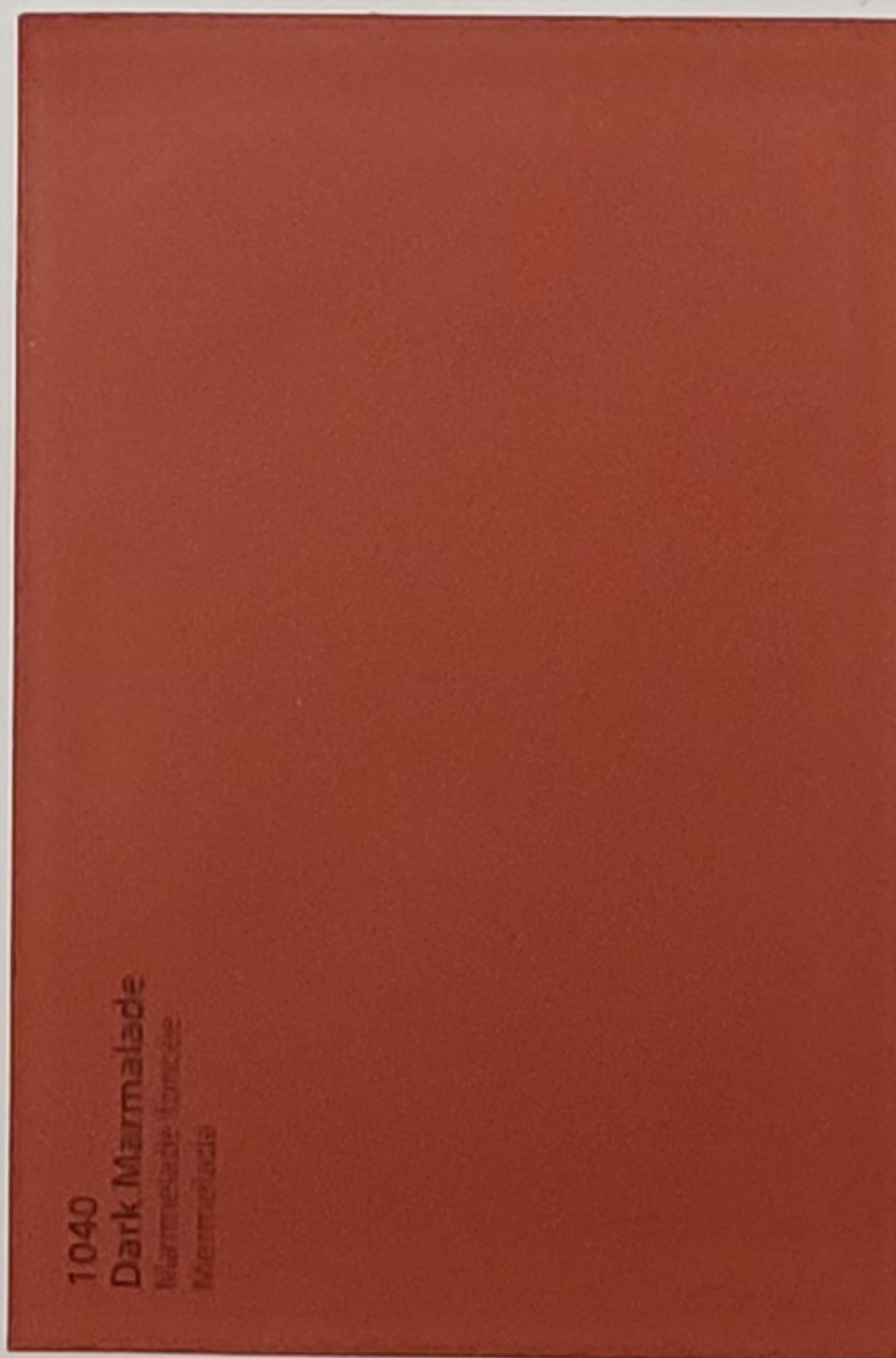
WD-1 | Western Red Cedar | 6" T&G



GL-1 | Storefront Glazing | Vitro | Solarban 60 (2) Solargray



AL-1 | Storefront | Dark Bronze



PT-7 | Elastomeric Paint #7 | Miller | Dark Marmalade, 1040



FL-1 | Metal Flashing / Coping | Dark Bronze