



**COMPOSITE WOOD SIDING - Accents at recesses**

PRODUCT: RESYSTA  
COLOR: DARK SIAM, 2-COAT FINISH  
SIZE: DARK SIAM, 2-COAT FINISH  
DETAILS: VERTICAL ORIENTATION, ALIGNED HORIZONTAL JOINTS AT EACH FLOOR



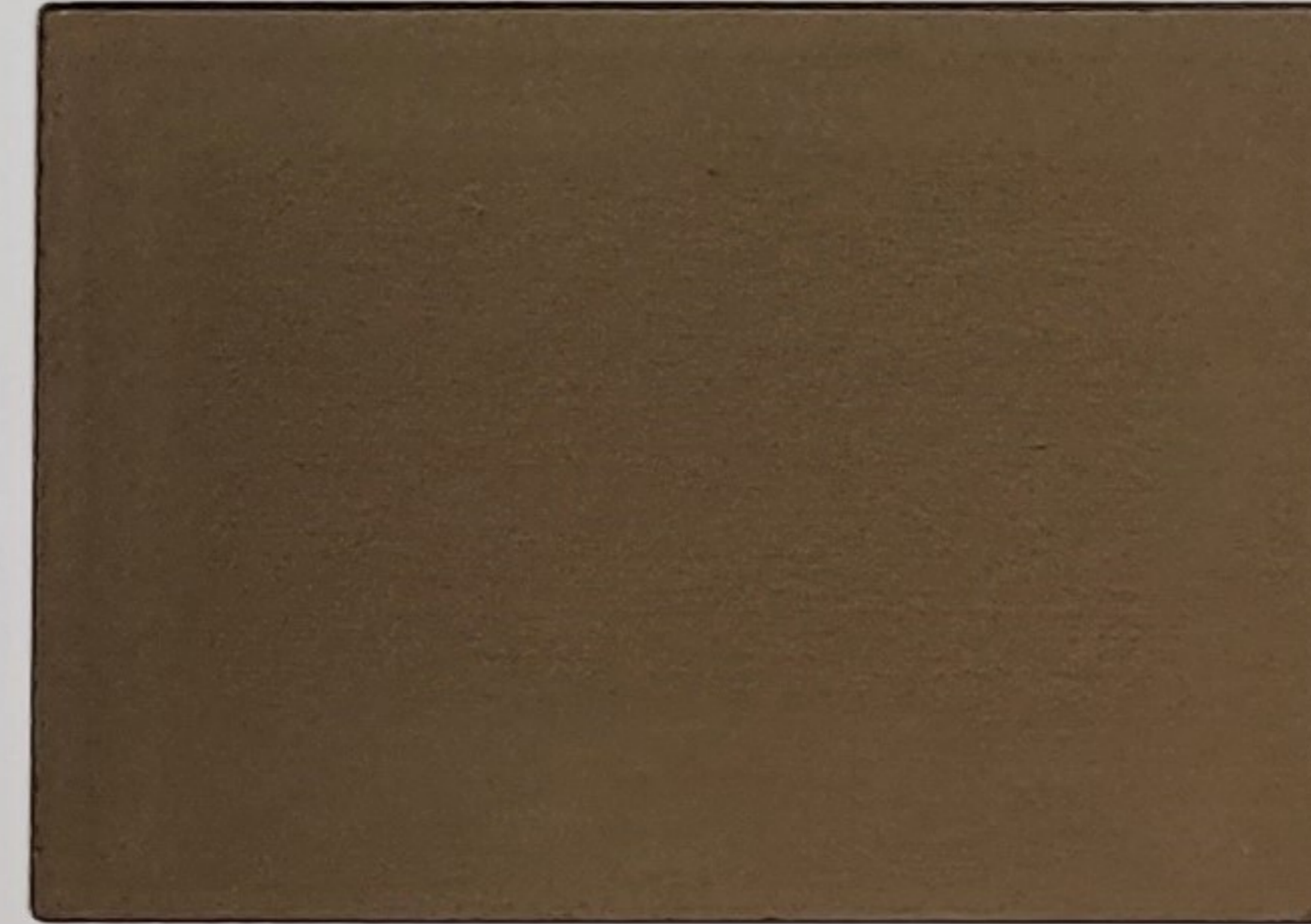
**FIBER CEMENT PANEL FCP 1 - Primary Upper Facade**

PRODUCT: HARDIE PANEL, SMOOTH FINISH  
COLOR: SHERWIN WILLIAM 'GRIZZLE GRAY', OR SIMILAR  
SIZE: 48" X 120", CUT TO SIZE PER ELEVATIONS  
DETAILS: FIELD PAINTED AND CAULKED, SEALED TO SHEET METAL FLASHING



**LINEAR BRICK VENEER**

PRODUCT: ARRISCRAFT 'ARCHITECTURAL LINEAR'  
COLOR: CHARCOAL  
SIZE: 2.25" x 3.75" x 8" - 32"  
DETAILS: RANDOM SIZES AND BOND, TOOLED BED JOINTS



**FIBER CEMENT PANEL FCP 1A - Accents at Window**

PRODUCT: HARDIE PANEL, SMOOTH FINISH  
COLOR: SHERWIN WILLIAM 'PROTEGE BRONZE', OR SIMILAR  
SIZE: 48" X 120", CUT TO SIZE PER ELEVATIONS  
DETAILS: FIELD PAINTED AND CAULKED, SEALED TO SHEET METAL FLASHING



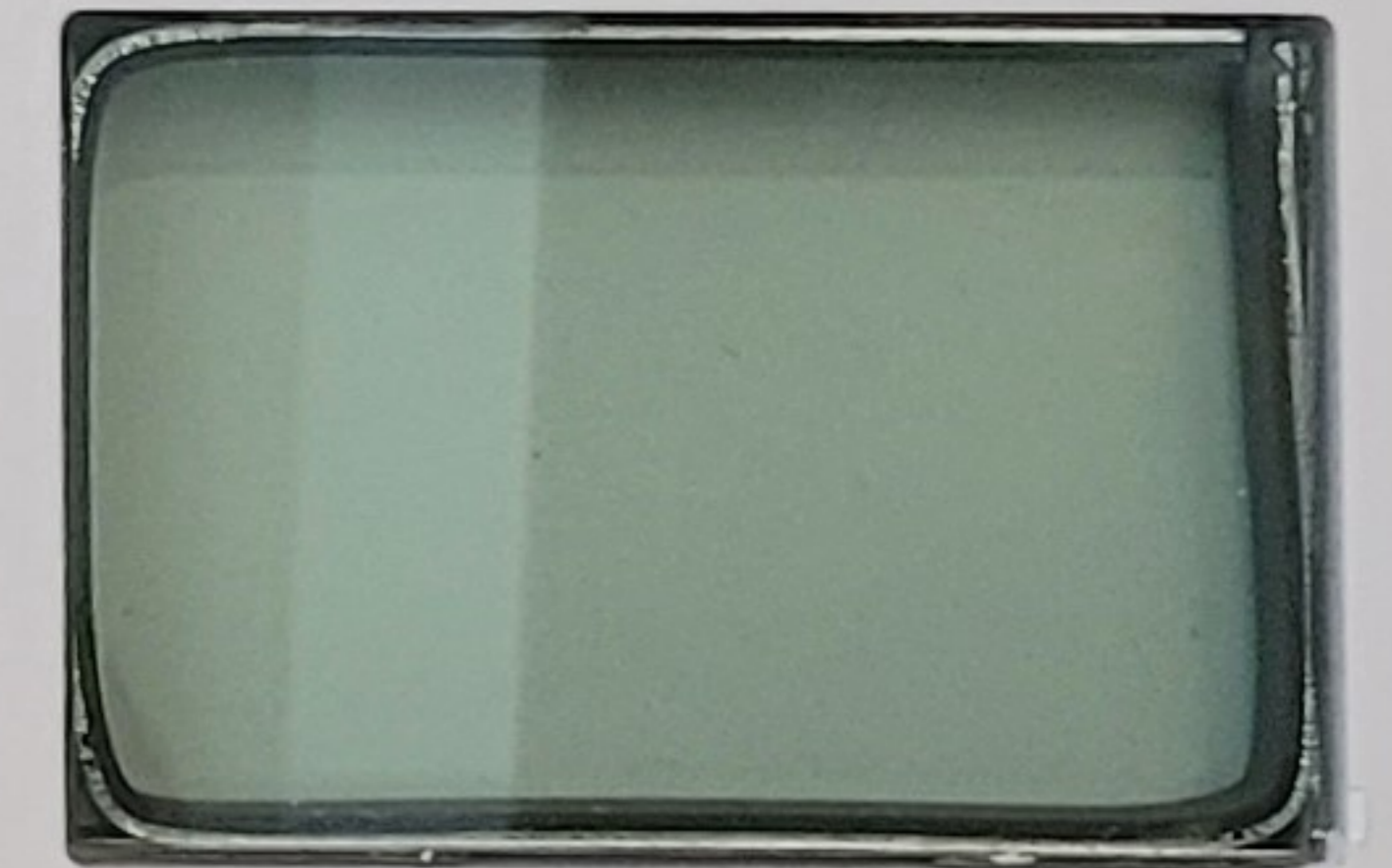
**VINYL WINDOWS**

PRODUCT: COMMERCIAL-GRADE VPI 'ENDURANCE' FIXED, CASEMENT & PATIO DOORS  
COLOR: WHITE INTERIOR BODY, FACTORY BLACK FOIL EXTERIOR FINISH



**FIBER CEMENT PANEL FCP 2 - Above & Below Windows**

PRODUCT: HARDIE PANEL, SMOOTH FINISH  
COLOR: SHERWIN WILLIAM 'TRICORN BLACK', OR SIMILAR  
SIZE: 48" X 120", CUT TO SIZE PER ELEVATIONS  
DETAILS: FIELD PAINTED AND CAULKED, SEALED TO SHEET METAL FLASHING



**EXTERIOR GLASS - At Storefront, Vinyl Windows & Doors**

PRODUCT: LOW-E COATED, PPG 'SOLARBAN 60', OR SIMILAR  
COLOR: CLEAR



**BLACK METAL - Sheet Metal flashings, Storefront, Canopies, Guardrails**

PRODUCT: FACTORY PAINTED STEEL & ALUMINUM  
COLOR: MANUFACTURER STANDARD BLACK, TO MATCH VINYL WINDOWS

**Architectural Linear Series Brick**  
Charcoal



**Arriscraft**

Building Stone · Brick · Limestone

[www.arriscraft.com](http://www.arriscraft.com) | 800.265.8123

