

Lawn Sign Definition

A temporary freestanding sign commonly made of corrugated plastic, greyboard, or similar type of material, constructed and maintained to prevent being moved or heavily damaged by typical exposure to natural elements.



Disclosures:

Reference to sign content in this brochure is solely for the convenience of the reader based on common requests and signs commonly seen erected and does not represent preference or support for any sign content.

The information in this brochure is for convenience and reference only. An attempt has been made to make the information presented as accurate as possible. However, this document is not a legal document, all enforcement and other City actions will be based on the adopted City Code.

To view a complete copy of the Wilsonville Sign Code and a large map indicating where signs are allowed, visit the City web site at:
<http://www.ci.wilsonville.or.us/Index.aspx?page=111>

A Guide to Lawn Signs in the City of Wilsonville

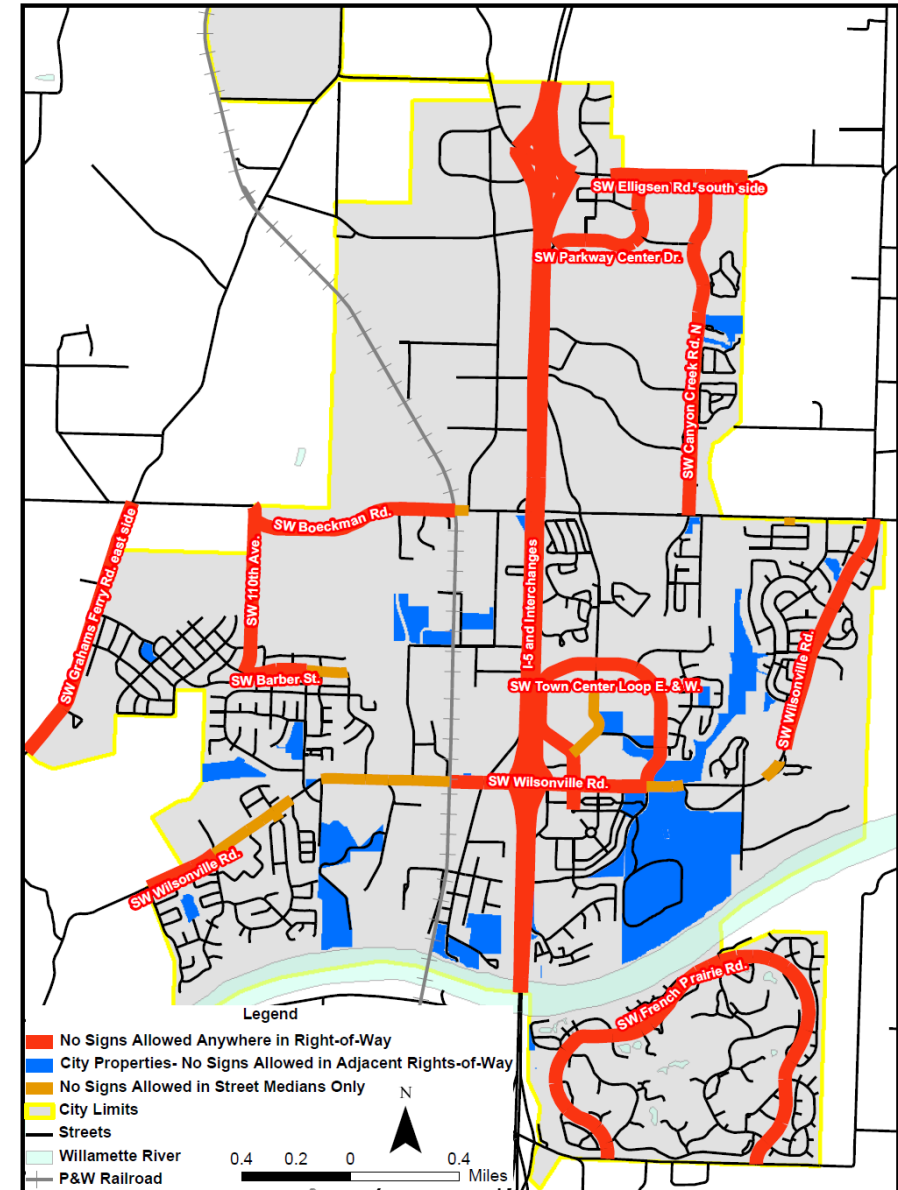


City of Wilsonville
 29799 SW Town Center Loop East
 Wilsonville, Oregon 97070

Planning Division
 (503) 682-4960

Where Signs Can Be Placed in the Public Right-of-Way

Temporary lawn sign may be placed in the public right-of-way, except sections indicated as not allowed on this map, subject to location, timing, quantity and other restriction stated in Wilsonville's Sign Regulations, including Section 4.156.10.



Created by D. Pauly, Wilsonville Planning Division. Last Updated June 2010.

The information on this map is for convenience and reference only. An attempt has been made to make the information presented as accurate as possible. However, this document is not a legal document, all enforcement and other City actions will be based on the current adopted City Code.

To view this map in a larger size, visit the City web site at: <http://www.ci.wilsonville.or.us/Index.aspx?page=111>, scroll down to "Excerpted sections from the Development Code."

Rules for Permit Exempt Lawn Signs in the City of Wilsonville

Including but not limited to Signs for Campaigns, Yard Sales and Similar Events, Retail Sales and Specials, Real Estate for Sale and Community Events



General Lawn Sign Rules

- ◆ **Maximum Size:** 6 square foot per sign face, typically 2 feet by 3 feet
- ◆ **Number of Sign Faces:** Signs limited to 1-2 faces
- ◆ **Lighting/Illumination/Movement:** Signs cannot be intentionally illuminated or display movement (including balloons)
- ◆ **Sign Support/Attachment:** Signs must be freestanding (cannot be attached to buildings, light posts, traffic signs, fences, etc.)
- ◆ **Other:** Signs cannot obscure sight lines of the motoring public, obscure traffic or other government signs, or create a nuisance to the use or occupancy of any property.

Notes:

- * A-board type signs can be considered lawn signs as long as they are placed off sidewalks or other paved surfaces.
- * The information in this brochure refers to the rules for a specific type of sign structure, lawn signs (including a-board or sandwich board signs), commonly used for the types of speech indicated. If you plan on using another type of sign structure please consult the sign related sections of Wilsonville's Development Code or contact Wilsonville's Planning Division at 503-682-4960 or planning@ci.wilsonville.or.us to inquire about what other rules may apply.

	Lawn Sign Rules on Private Property	Lawn Sign Rules in the Public Right-of-Way
Maximum Number of Signs:	No more than 3 temporary signs of any kind can be on a property at any given time.	A single person is allowed a maximum of 3 lawn signs in the right-of-way.
Maximum Height:	6 feet	30 inches
Spacing:	No spacing required between signs on private property	Signs must be placed 10 feet from any other temporary sign, and 50 feet from a sign placed by the same person. Signs must be placed within 40 feet of an intersection.
Length (and time) of Display:	Lawn signs associated with a temporary event can be posted a maximum of 60 days before an event (election, yard sale, listing of a property, etc.), and must be removed at the completion of the event. Lawn signs not associated with a temporary event can be posted for one period of up to 60 days in a calendar year.	6 a.m. Friday to 8 p.m. Sunday 9 a.m. to 4 p.m. Tuesday No event related restrictions
Property Owner's Permission:	As a matter of law and common courtesy, permission must be obtained prior to placing signs on private property other than your own. In the case of a complaint City staff may ask to see written permission.	
Placement Locations:		<u>Lawn signs are prohibited at all times in the sections of the right-of-way shown in red in the map in this brochure.</u> Signs may be placed in any other section of right-of-way in the City as long as they are not placed on street surfaces, sidewalks, paths, median strips, or bicycle ways.
Enforcement:		City crews regularly remove signs not meeting these rules from the right-of-way. Signs, unless made of poster board or similar light inexpensive material, are kept for at least 10 days. If they are not claimed within 10 days, they are considered abandoned and will be disposed of. The City will make a reasonable attempt to contact sign owners of the removal as soon as possible. However, the City has no responsibility to contact the sign owner if the owner's name, address, and telephone number are not clearly indicated on the sign.

